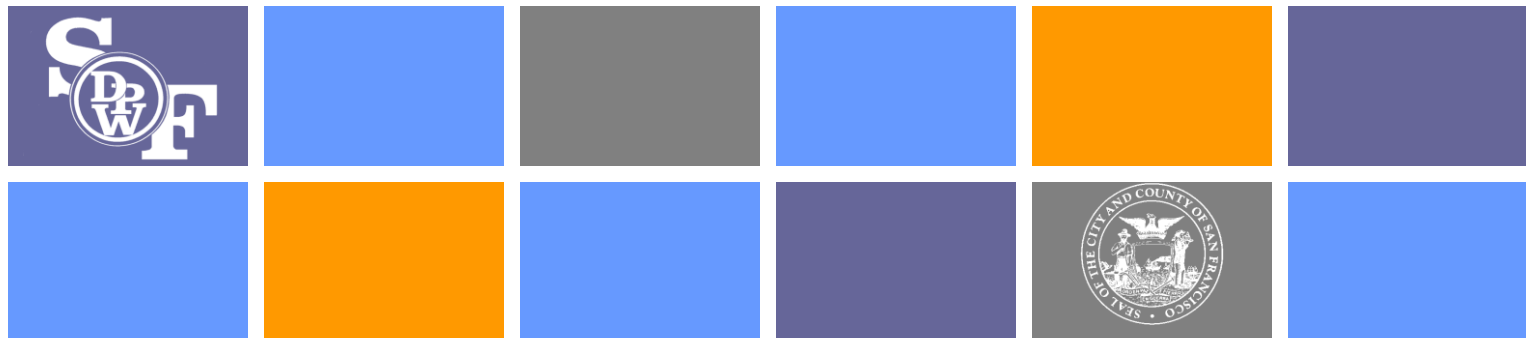


City and County of San Francisco Department of Public Works

Street Tree Maintenance Transfer

Aligning City Assets with City Resources

June 2011



DPW as stewards of the Urban Forest

- Under Article 16 of the PWC, DPW has jurisdiction over all trees in the public right-of-way, and is charged with managing the urban forest to realize the benefit of trees for San Franciscans. DPW believes a healthy urban forest enhances our quality of life, and reduces water, air and noise pollution.
- Our management includes planning, planting, maintenance, and removal of trees in the public right-of-way. We care for public street trees and enforce the code for privately maintained trees.
- Because of funding cuts, DPW is not able to care for all of the trees which are currently our responsibility. We believe transfer of maintenance responsibility to property owners, while not ideal, is necessary to meet our responsibilities under the Urban Forestry Ordinance.

State of the Urban Forest

- San Francisco has approximately 100,000 street trees planted in sidewalks or medians.

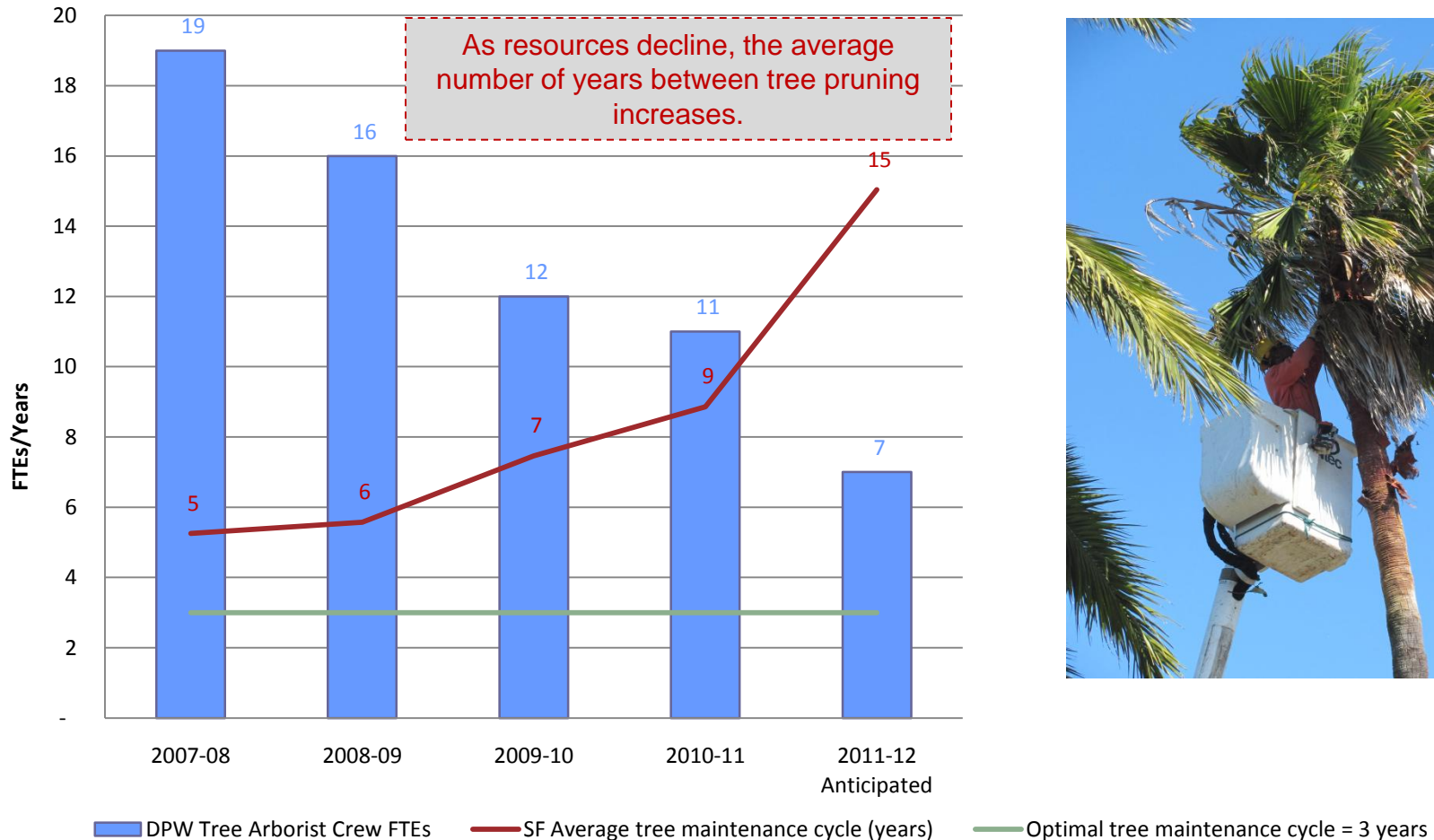
	Before Transfer	Trees Transferred	After Transfer
Privately Maintained Street Trees	65,000	+23,700	88,700
DPW Maintained Street Trees	27,800	-23,700	4,100
DPW Maintained Median Trees	7,500	0	7,500
Total	100,300	0	100,300

State of the Urban Forest

- Trees should be pruned every 3 to 5 years.
- With current resources DPW prunes trees every 10 to 12 years.
- DPW's resources for tree maintenance continue to decline.
- Lack of maintenance causes trees to threaten safety or property, including sidewalk damage.



DPW Resources for Tree Care



Purpose of Tree Maintenance Transfer

Align DPW's assets with available resources

Allocate responsibility more equitably to property owners

Provide caretakers for trees

Protect public safety

SF Urban Forestry Ordinance

SF Public Works Code Sections 800 through 814

SEC. 805. - RESPONSIBILITY FOR MAINTENANCE OF STREET TREES (excerpts):

(a) It shall be the duty of owners of lots or portions of lots immediately abutting on, fronting on or adjacent to any street tree to maintain such street tree. This duty shall include both routine and major maintenance of the street tree.

(b) The Department may...determine to undertake the regular routine and/or major maintenance of certain street trees or corridors of street trees to promote consistency in the maintenance of trees or in the public interest.

(e) The Director may...determine to relinquish tree maintenance responsibilities for certain trees or corridors of trees...Prior to relinquishing maintenance responsibilities, the Department shall perform all necessary major tree maintenance. As of the date designated by the Director, all tree maintenance and tree-related maintenance shall be the responsibility of the abutting property owner.

Tree Maintenance Transfer Plan

Relinquish 23,700 healthy, recently pruned or established trees to fronting property owners, over a seven-year period

3,400 trees are ready to relinquish in the first part of FY11-12

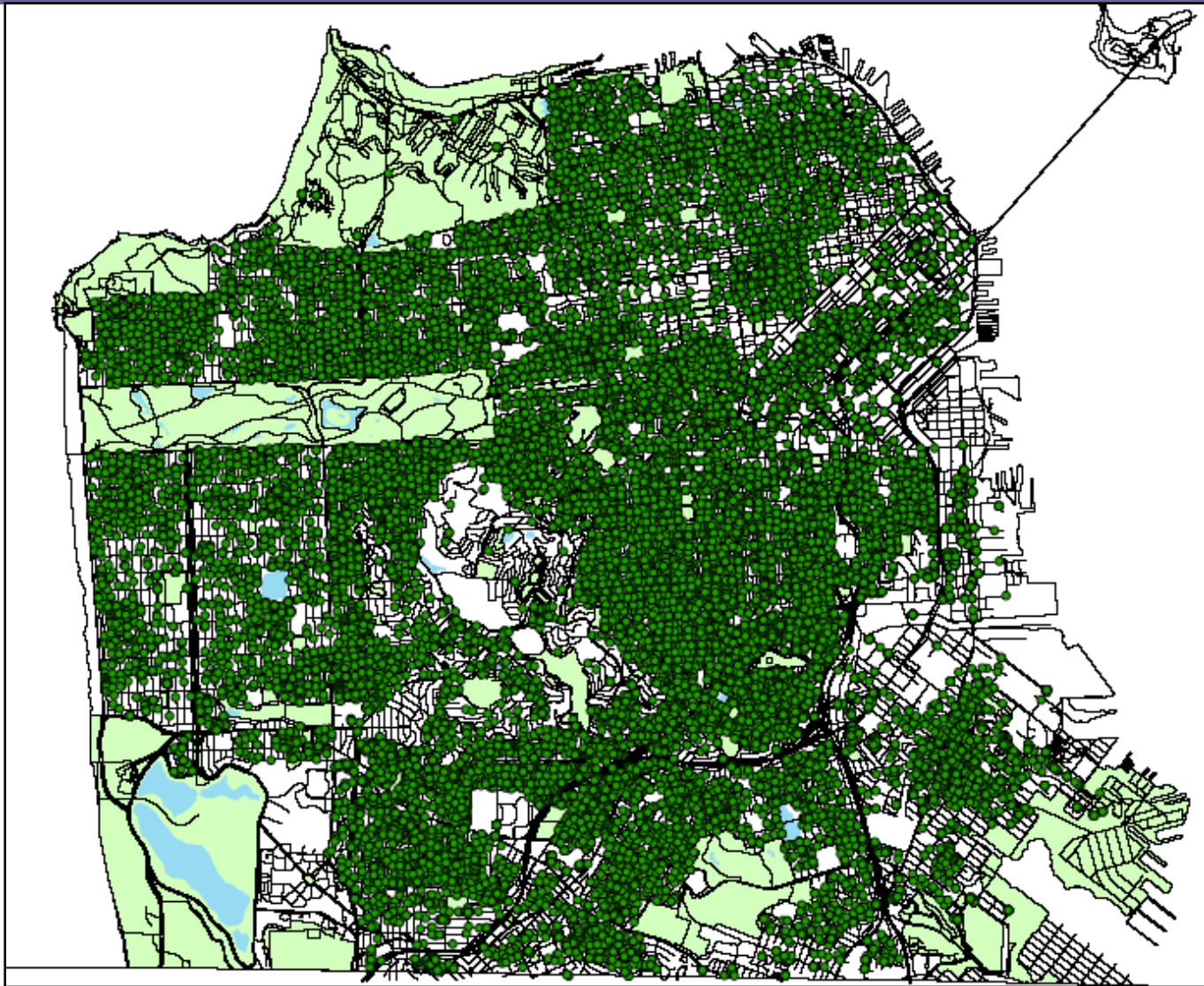
3,000 trees/year can be made ready for relinquishment with necessary maintenance

Tree Maintenance Transfer Schedule

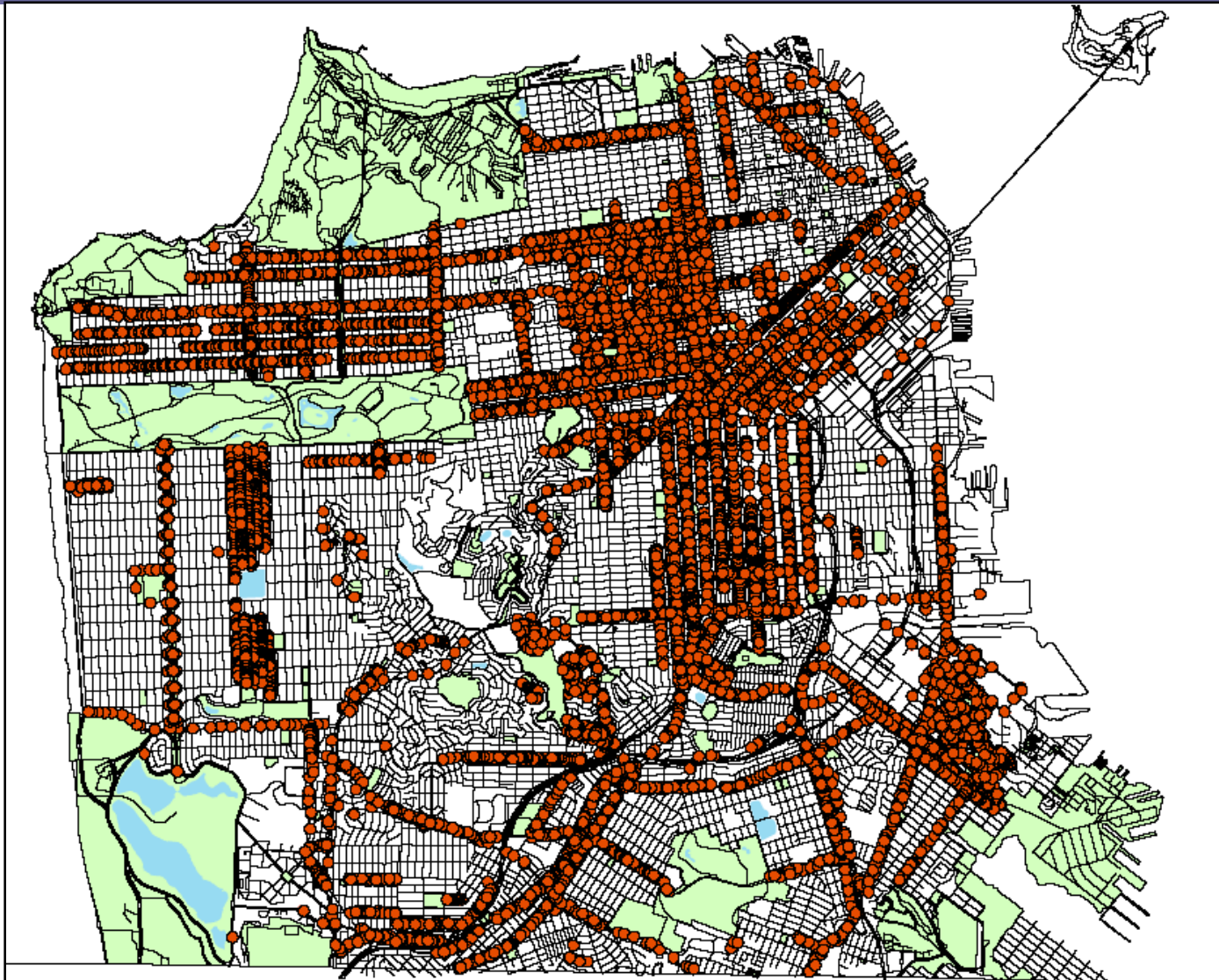
Fiscal Year	Number of Trees
FY11-12: 12/31/11	3,400
FY11-12: 6/30/12	3,000
FY12-13	3,000
FY13-14	3,000
FY14-15	3,000
FY15-16	3,000
FY16-17	3,000
<u>FY17-18</u>	<u>2,300</u>
Total	23,700



Privately Maintained Trees



DPW Maintained Trees



Transfer Process

Inspect trees to ensure health and recent pruning

Post notices on trees and notify property owners by mail

Provide information packets on tree care

Address questions and concerns by phone and web

Inform owners on how to request a hearing

Questions?

More information can be found at www.sfdpw.org