

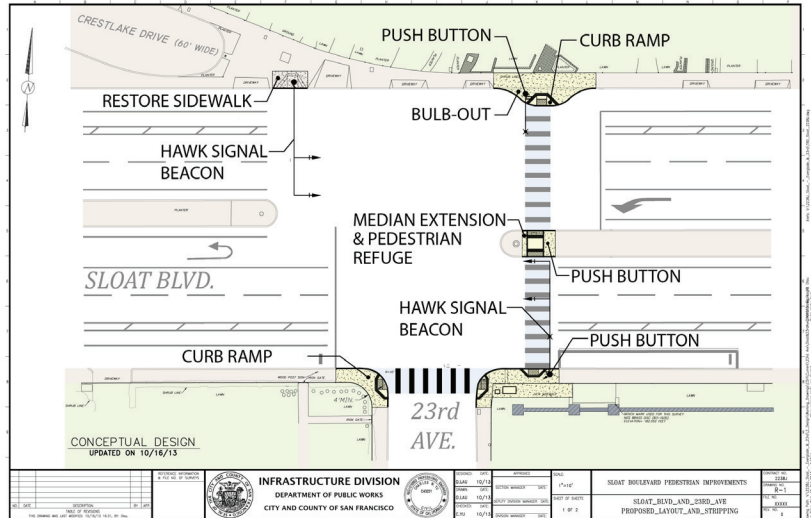
# San Francisco Public Works

## Sloat Boulevard Pedestrian Safety Improvements - Phase 2

What's happening: The future pedestrian safety improvements for Sloat Boulevard at 23rd Avenue will provide a safer environment for pedestrians, motorists, cyclists and transit riders with the installation of special traffic calming features such as bulb-outs, curb ramps, crosswalks, extended medians and a new pedestrian activated crossing beacon.

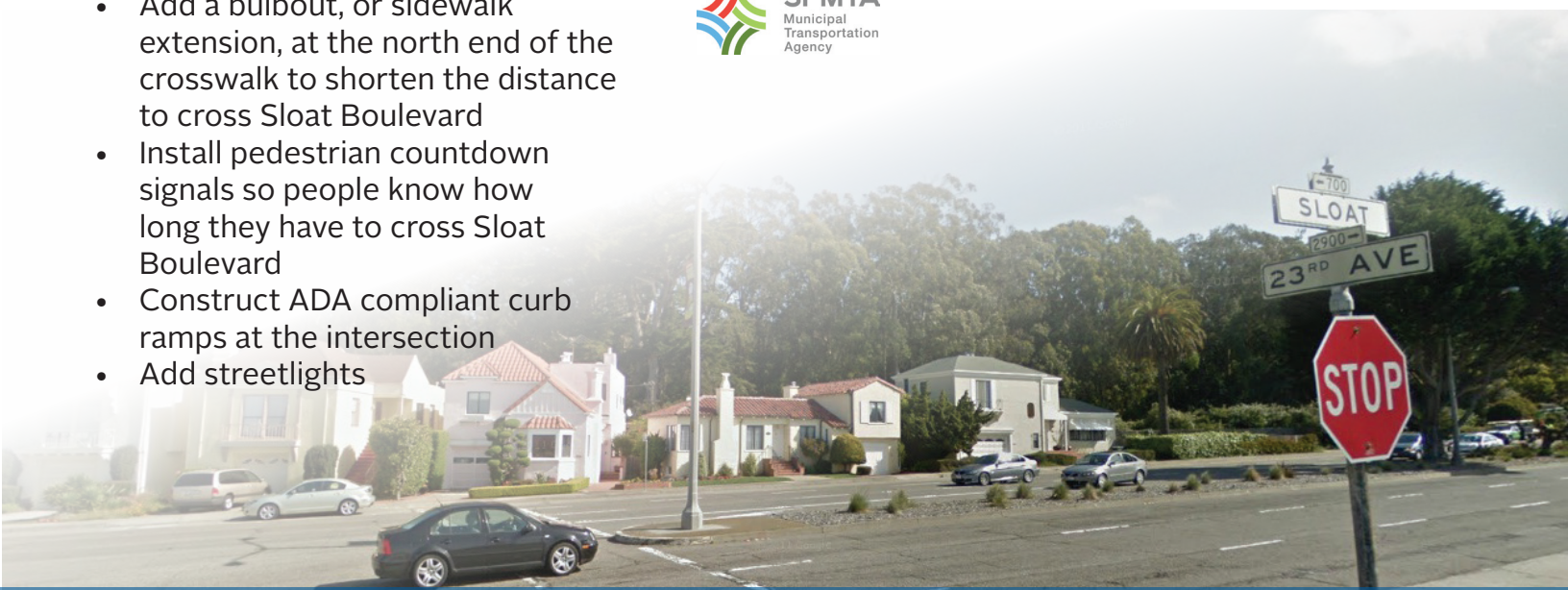
### Improvements:

- Install a new mast-arm traffic beacon that will overhang Sloat Blvd. and be activated by pedestrians with the push of a button when they're ready to cross the street
- Extend the eastern median island in the middle of Sloat Blvd. to provide an improved pedestrian refuge area
- Add a bulbout, or sidewalk extension, at the north end of the crosswalk to shorten the distance to cross Sloat Boulevard
- Install pedestrian countdown signals so people know how long they have to cross Sloat Boulevard
- Construct ADA compliant curb ramps at the intersection
- Add streetlights



**When:** Construction planned to begin Summer 2015

**Where:** Sloat Boulevard at 23rd Avenue



For more info please visit [sfpublishworks.org/sloat](http://sfpublishworks.org/sloat) or call Mindy Linetzky at 415-554-4829