



LAUREL VILLAGE

CALIFORNIA STREET | STREETSCAPE PROJECT



Questionnaire #2 Results

Total Responses Received: **122 (10/08/15 - 10/29/15)**

1. **Zip Code:**
 - 94118 (108) – 89%
 - Other (14) – 11%
2. **Project Relationship:**
 - **88% Live** on or near the project
 - **15% Work** at or near the project site
 - **23% Commute** on the 1, 1AX, or 1BX-California
3. **Transportation:**
 - **48%** of respondents **Drive** to Laurel Village
 - **88%** of respondents **Walk** to Laurel Village
 - **15%** of respondents take **Transit** to Laurel Village
 - **11%** of respondents **Bike** to Laurel Village
4. The streetscape design concept receiving the highest voter rank was the **Contemporary Formal** option (see opposite side) with nearly **60%** of respondents ranking it as their top choice versus 31% for the European Bistro and 12% for the Modern Contemporary concepts.
5. The most desired **project elements** by rank were:
 1. New Sidewalks
 2. Street Trees
 3. Pedestrian Lighting
 4. Seating/Furnishings
 5. Parking Meter Consolidation
6. When respondents were asked if adding a **right-turn pocket to northbound Spruce Street at California Street** would be acceptable given the trade-off of removing two general metered parking spaces and one passenger loading zone, **52% were in favor of the proposal**. This proposal is still being evaluated for inclusion in the project.
7. When respondents were asked if adding new street trees within existing parking spaces would be acceptable given the trade-off of each new tree removing one parking space for a total of four parking spaces removed, **60% were in favor of the proposal**. Currently, the design keeps the trees within the existing sidewalk alignment.

Project Schedule

Public Outreach / Planning
Design
Contract Bid & Award
Construction

March 2015 - April 2016
May - October 2016
Fall 2016 - Winter 2017
Spring - Fall 2017

For more information, visit <http://www.sfpublicworks.org> and find this project under the 'Projects' tab

Frequently Asked Questions (FAQ)

Q. How will this project be funded?

A. The Laurel Village Streetscape Improvement project was selected as part of the 2011 Road Repaving & Street Safety Bond to include improvements to the stretch of California Street fronting the Laurel Village Shopping Center. The project budget was set at \$1.25 million with the goal of improving safety and providing a more attractive pedestrian environment. After the planning and design fees, the project has approximately \$800,000 budget for construction. San Francisco Public Works has partnered with the San Francisco Municipal Transportation Agency to include Muni Forward transit improvements and signal upgrades, which helps to minimize future disruptions after construction, and helps offset some of the project costs, resulting in a more robust streetscape design. Since the last public meeting in October 2015, the project scope has increased to include repaving the roadway on California Street from Laurel to Cherry streets, as well as sewer upgrades along the same stretch.

Q. How will traffic be impacted?

A. The new transit bulbs and streetscape proposals do not reduce traffic lanes. While implementation is still under review, the transit bulbs would make Muni more reliable by reducing the need to pull in and out of bus zones. They would also allow for smoother, safer, and quicker passenger loading. Moving the bus stop allows Muni to travel through intersections without stopping at red lights which will decrease transit travel time. To help alleviate existing traffic conditions at the northbound intersection of Spruce and California, the project team proposed a right-turn pocket, which is still being evaluated. If installed, it will allow north-bound and left-turning vehicles to pass right-turning traffic after exiting the Laurel Village parking lot.

Q. How are safety concerns addressed by this project?

- The steep cross-slope in front of the Cal-Mart will be leveled.
- All non-compliant curb ramps will be upgraded.
- The transit bulbs will extend the sidewalk to increase the visibility of pedestrians and shorten crossing distances.
- Planted thumbnail medians will be used as a traffic calming measure along California Street at the Locust Street intersection.
- The bulbout at Locust Street will be widened to include the two pedestrian crossings on both sides, the extension will shorten the crossing distance across California Street.
- New pedestrian light fixtures will be placed along the south side of California Street from Spruce to Laurel streets.
- Any proposed benches will have intermediate armrests to deter people from sleeping on them.

Q. Will landscaping improvements occur on both sides of the street?

A. In addition to the planted thumbnail medians, Public Works will be adding 5-10 smaller olive trees on the north side of California Street between Spruce and Laurel streets.

Q. How does the City of San Francisco plan to maintain the landscaping?

A. The construction contract will include a two-year plant establishment period. After, the maintenance of trees will fall to the fronting property owners. The City will work with merchants to develop a plan for day-to-day maintenance of the non-tree landscaping.

Q. Will anything be done to the rear parking lot of Laurel Village?

A: No, the parking lot located in the rear of the Laurel Village shopping center is private property. Any improvements to the parking lot and passageway at Locust Street must be done by the property owners. However, the sidewalks at the driveway entry/exit on both Laurel and Spruce streets will receive upgraded curb ramps.



1 Dr. Carlton B. Goodlett Place, City Hall, Room 348
San Francisco, Ca 94102



Ancient Olive Trees are proposed to be planted along the south side of California Street. Standard olive trees will be planted on the north side.



Topiary Hedges will be provided at the Locust street plaza to add greening and provide a buffer to California street traffic.



Storefront planters are designed to improve the consistency and visual aesthetics of the shopping center.



New pedestrian lighting will help the visibility of businesses along the street and provide a safer environment for pedestrians at night.



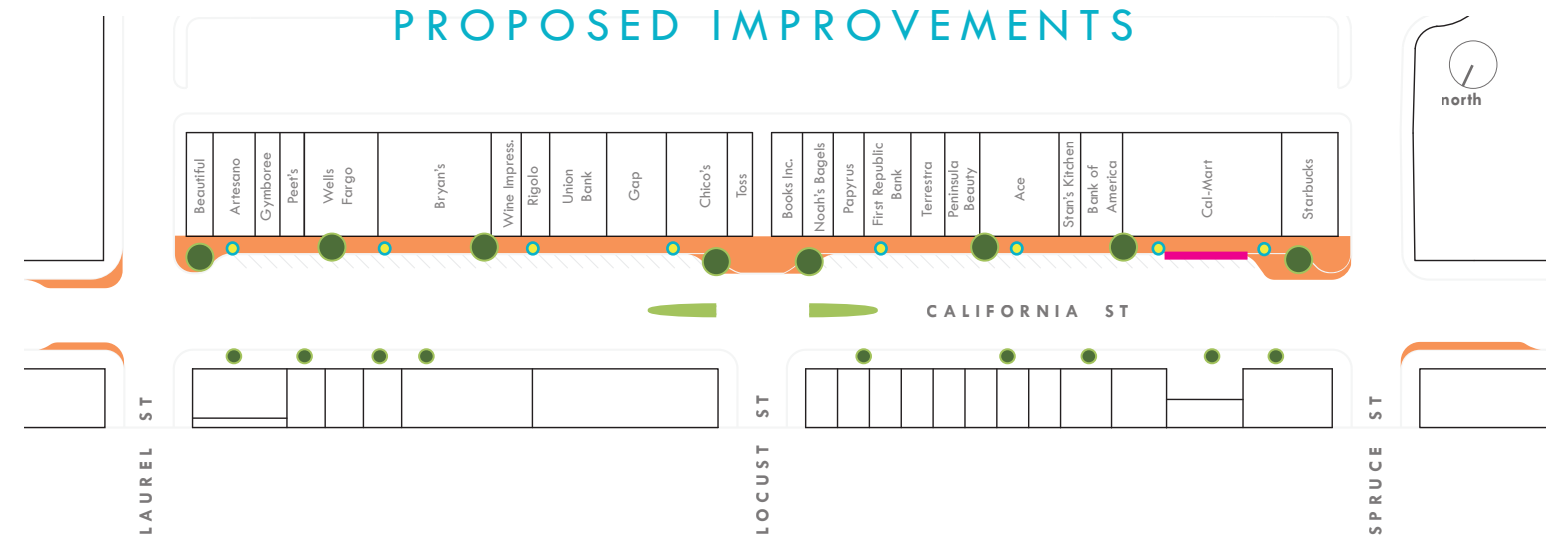
New sidewalks will provide a safe and comfortable shopping experience for pedestrians, and will remedy the steep cross-slope near Cal-Mart and Starbucks.



Proposed bus stop bulbout in front of Starbucks would make Muni more reliable by reducing the need to pull in and out of bus zones. It would also allow for additional pedestrian space and a more robust 'gateway' to Laurel Village.



CALIFORNIA LAUREL VILLAGE STREETScape PROPOSED IMPROVEMENTS



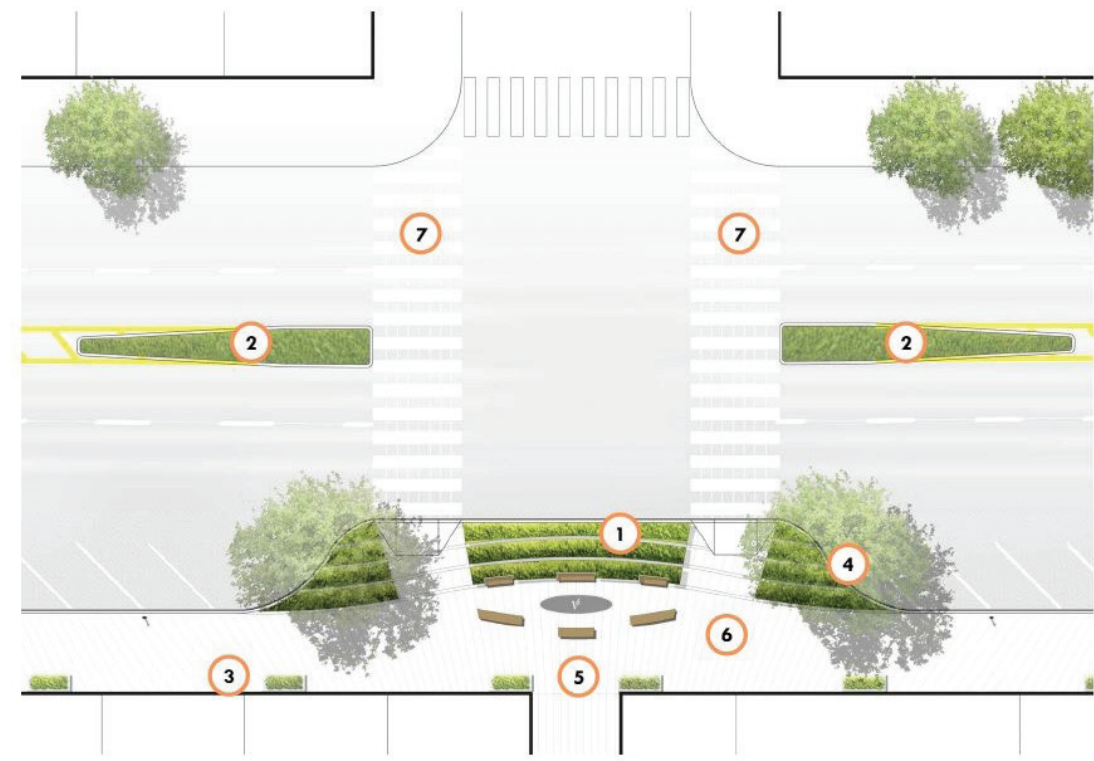
LEGEND

- 'Heritage' Olive Trees (locations are approximate)
- Standard Olive Trees (locations are approximate)
- Pedestrian Lighting (locations are approximate)
- ▬ Median Planting at Crosswalk
- ▬ New Sidewalks/Bulbouts
- ▬ Raised Curbs

Laurel Village Pedestrian Improvements
Project Update | May 2016

Project Background: The California Laurel Village Streetscape project is 1 of 24 streetscape projects from the voter-approved 2011 Road Repaving & Street Safety Bond. This proposal has been developed with input from residents, property owners, and merchants at two community meetings, held in March and October 2015, as well as stakeholder outreach in early 2016.

CONTEMPORARY FORMAL



CENTRAL PLAZA : PLAN VIEW

LEGEND

- 1 Green Plaza Buffer
- 2 Expanded Median
- 3 Storefront Planters
- 4 Specimen Ancient Olive Tree
- 5 Plaza Logo + Benches
- 6 Iconic Paving
- 7 New Continental Crosswalks

