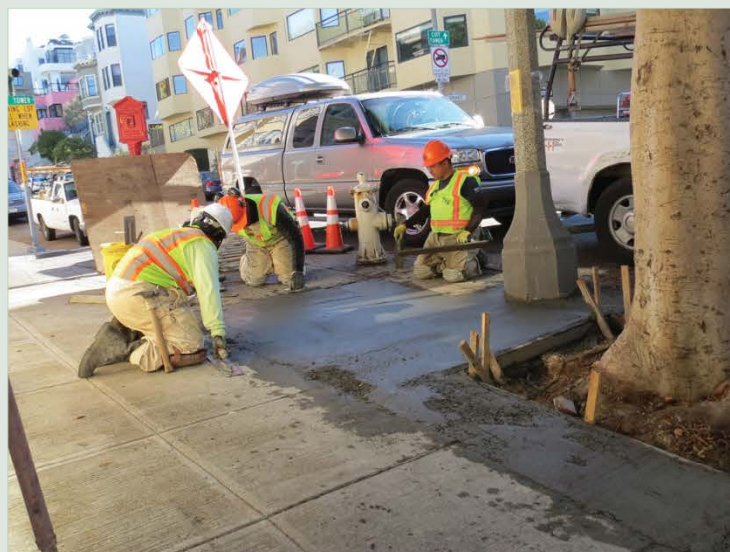




PROPOSITION E: STREET TREE AND SIDEWALK MAINTENANCE



WHAT IS PROPOSITION E?

Nov. 8, 2016 ballot measure:

“Shall the City amend the Charter to transfer responsibility from property owners to the City for maintaining trees on sidewalks around their property as well as sidewalks damaged by the trees?”

Funded by the City's
General Fund

\$19 million
per year
guarantee

No new taxes

Proposition E. does not fund planting or tree establishment.

WHAT IS PROPOSITION E?

79%

Voter approval



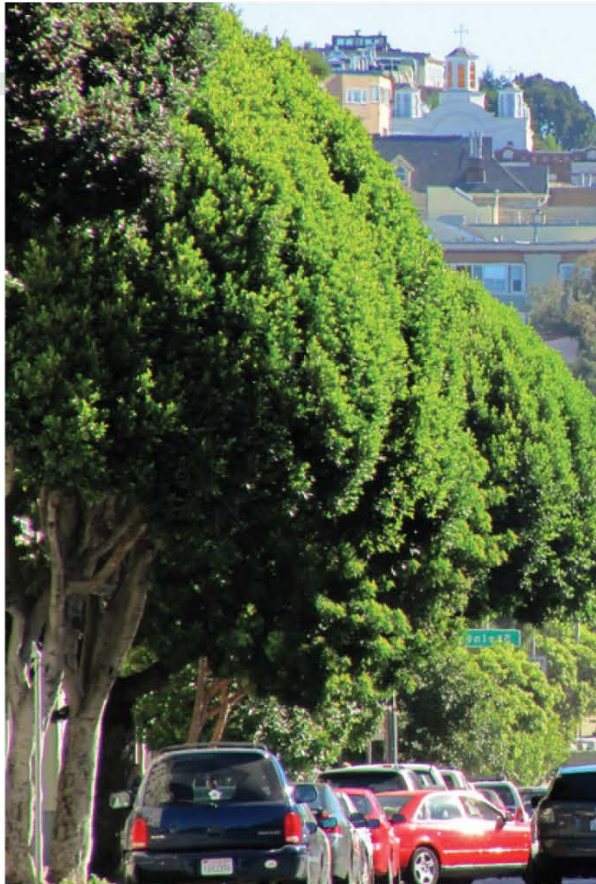
WHAT YOU NEED TO KNOW



Urban Forest Plan

“Trees in San Francisco face a number of challenges. Historically underfunded and inadequately maintained, the City’s tree canopy is one of the smallest of any large U.S. city.”

WHAT YOU NEED TO KNOW



Urban Forest Plan

- Maximize the benefits of street trees
- Establish and fund a citywide street maintenance program
- Manage street trees throughout their entire life-cycle

WHAT YOU NEED TO KNOW

Trees: Starting with the worst first

- Correct structural flaws
- Gain necessary clearances

Routine tree pruning starting
2020

Proposition E will take effect on
July 1, 2017

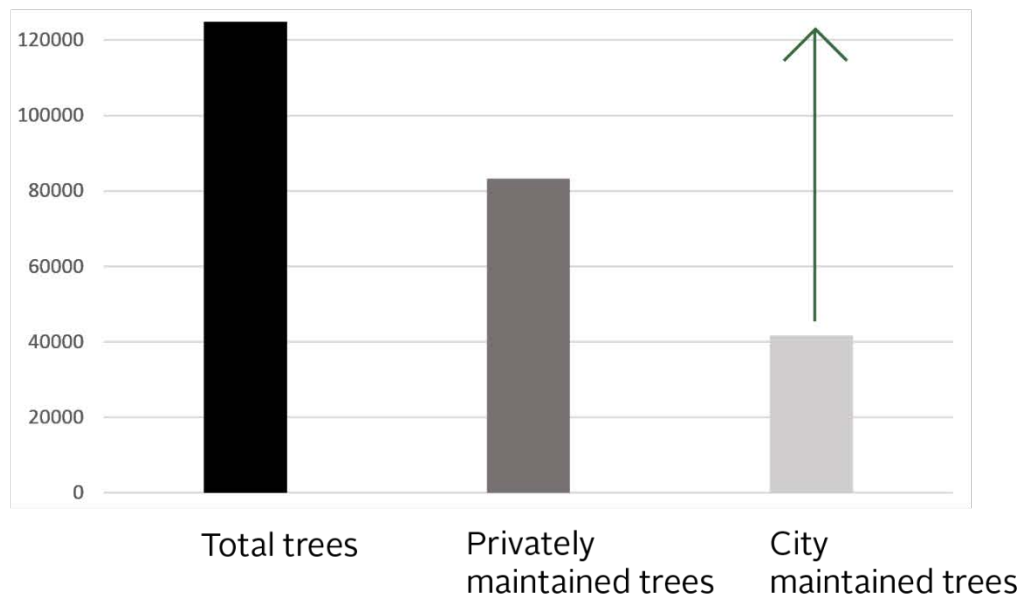
Sidewalk maintenance

- Damage in primary path of travel
- Commercial corridors

WHAT YOU NEED TO KNOW

124,847

San Francisco Street Trees



WHAT YOU NEED TO KNOW

Street Tree Census

Starting with the worst first

Priority 1



Priority 2



Priority 3



WHAT YOU NEED TO KNOW

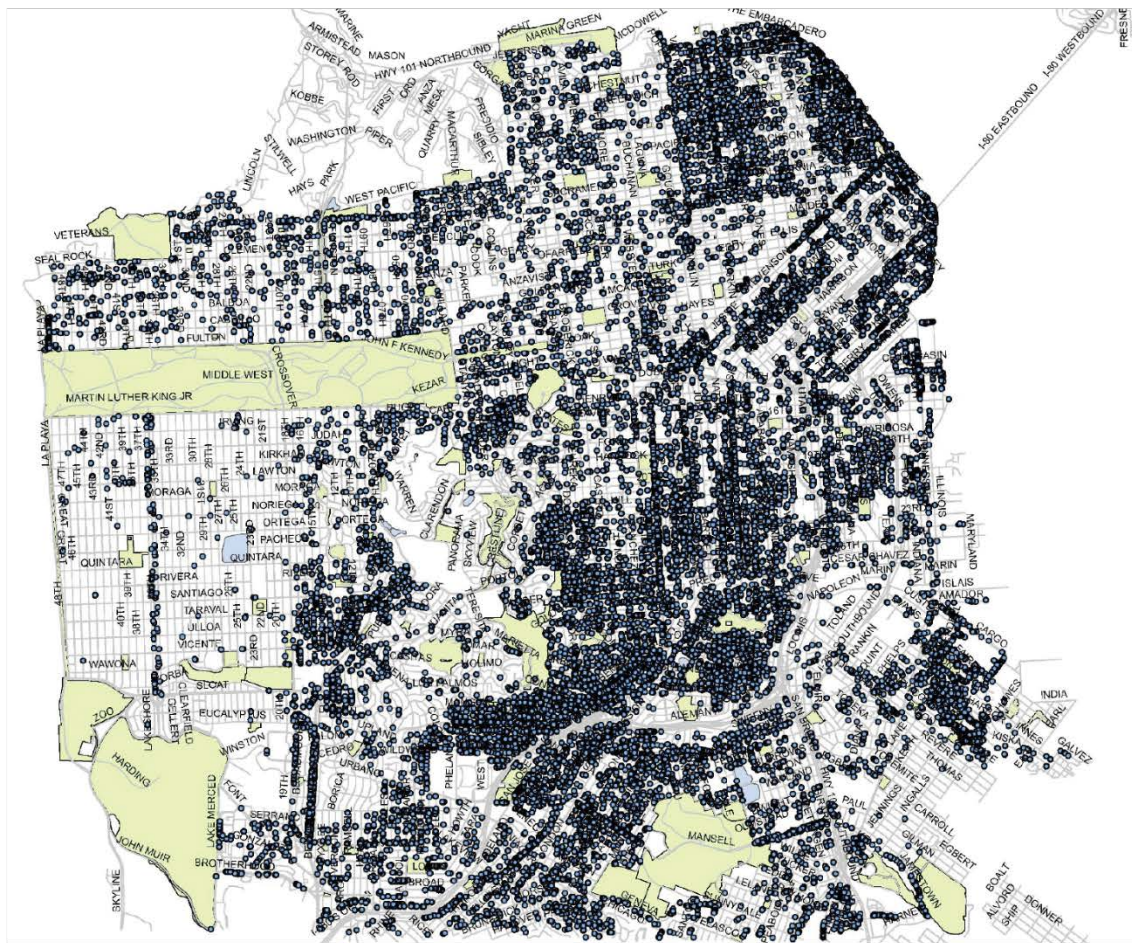


Street Tree Census

Maintenance Priority 1

- 3,621 removals
- 1,720 prunes

WHAT YOU NEED TO KNOW

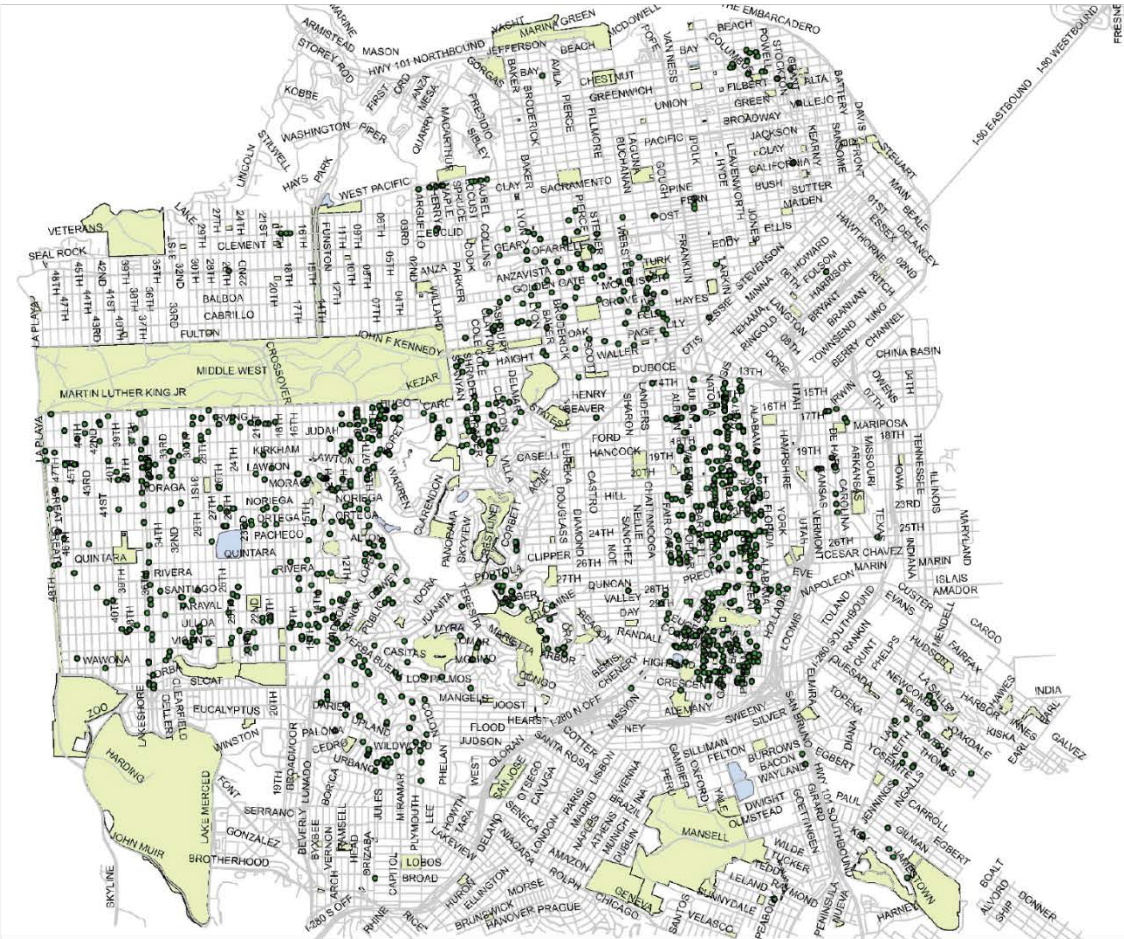


Street Tree Census

Maintenance Priority 2

- 6,982 removals
- 13,842 prunes

WHAT YOU NEED TO KNOW



Street Tree Census

Maintenance Priority 3

- 1,189 removals

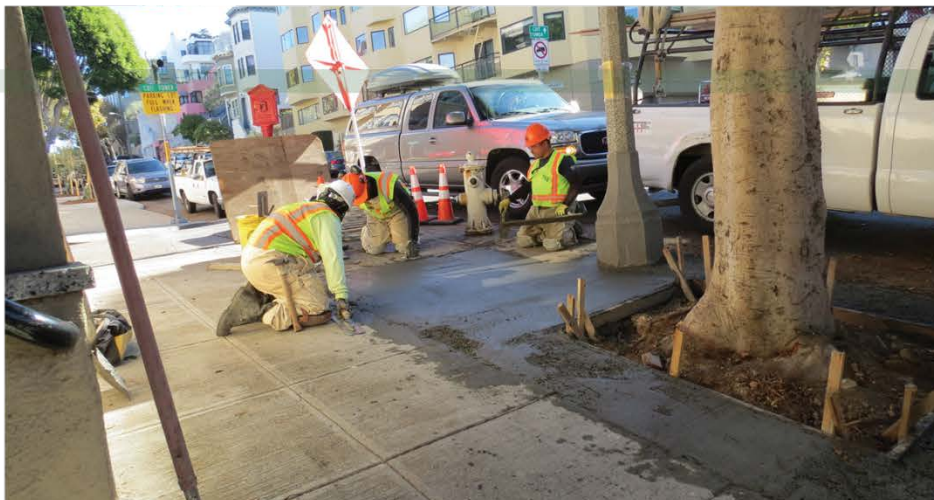
TAKING CARE OF BUSINESS



What will the City do?

- Start with the worst first
- Prune trees on a 3- to 5-year cycle
- Remove unhealthy & unsound trees
- Report on funding & track completed work
- Treat tree-related sidewalk damage

TAKING CARE OF BUSINESS



Sidewalk Maintenance

Fix damage in primary path of travel

- 31,000 sidewalk sites in need of repair
- Priority 1: bus stops, schools, senior centers, health centers in the pedestrian throughway zones
- Priority 2: all other pedestrian zones

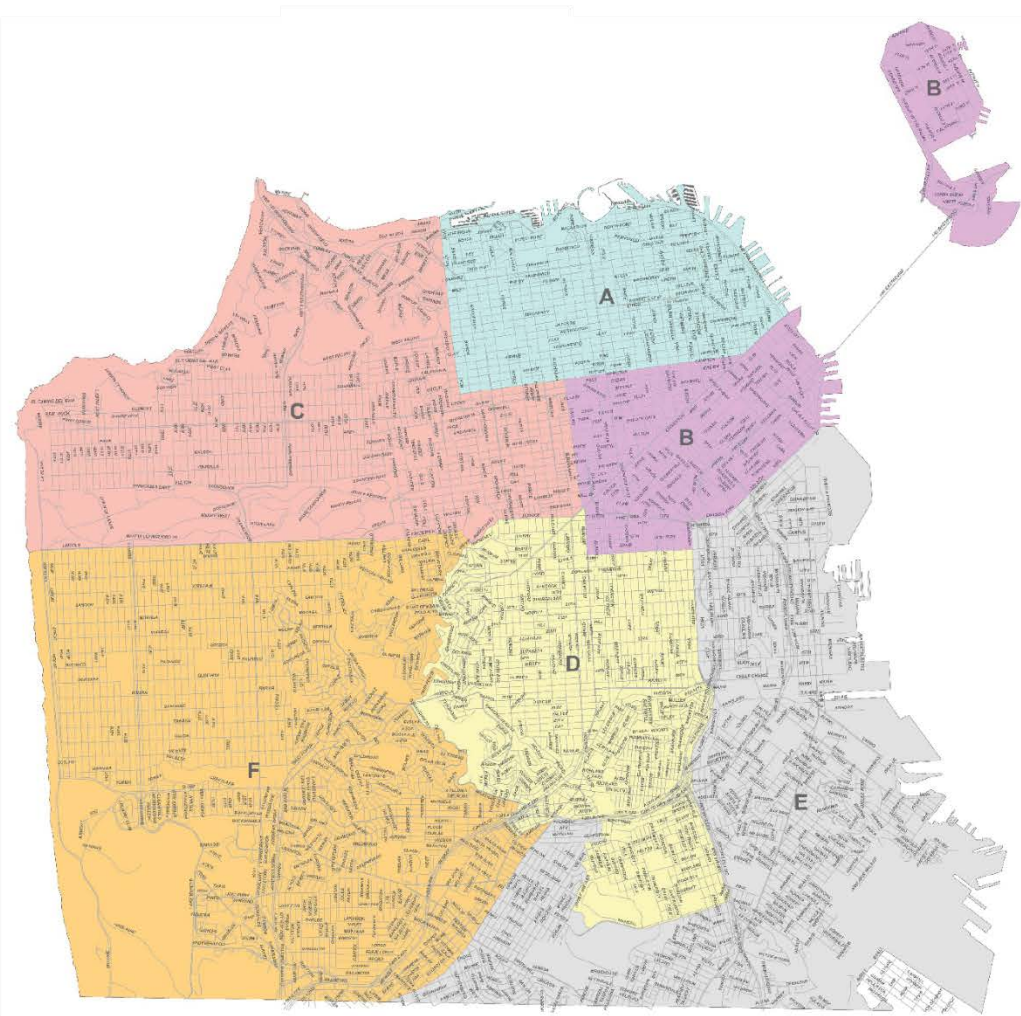
TAKING CARE OF BUSINESS



What will property owners do?

- Repair non tree-related sidewalk damage
- Obtain tree planting permits
- **Maintain street trees prior to July 1, 2017**
- You can opt out

TAKING CARE OF BUSINESS



6 Bureau of Urban Forestry Zones

- 1 tree crew per zone
- 1 urban forestry inspector per zone
- 52 new city arborist and support positions will be phased in
- Contracting out 50% of the work

WHAT YOU CAN DO

Call 311 to report
damaged trees



Learn about your
local trees



Inquire for more
information

- sfpublicworks.org/trees
- (415) 554-6700

