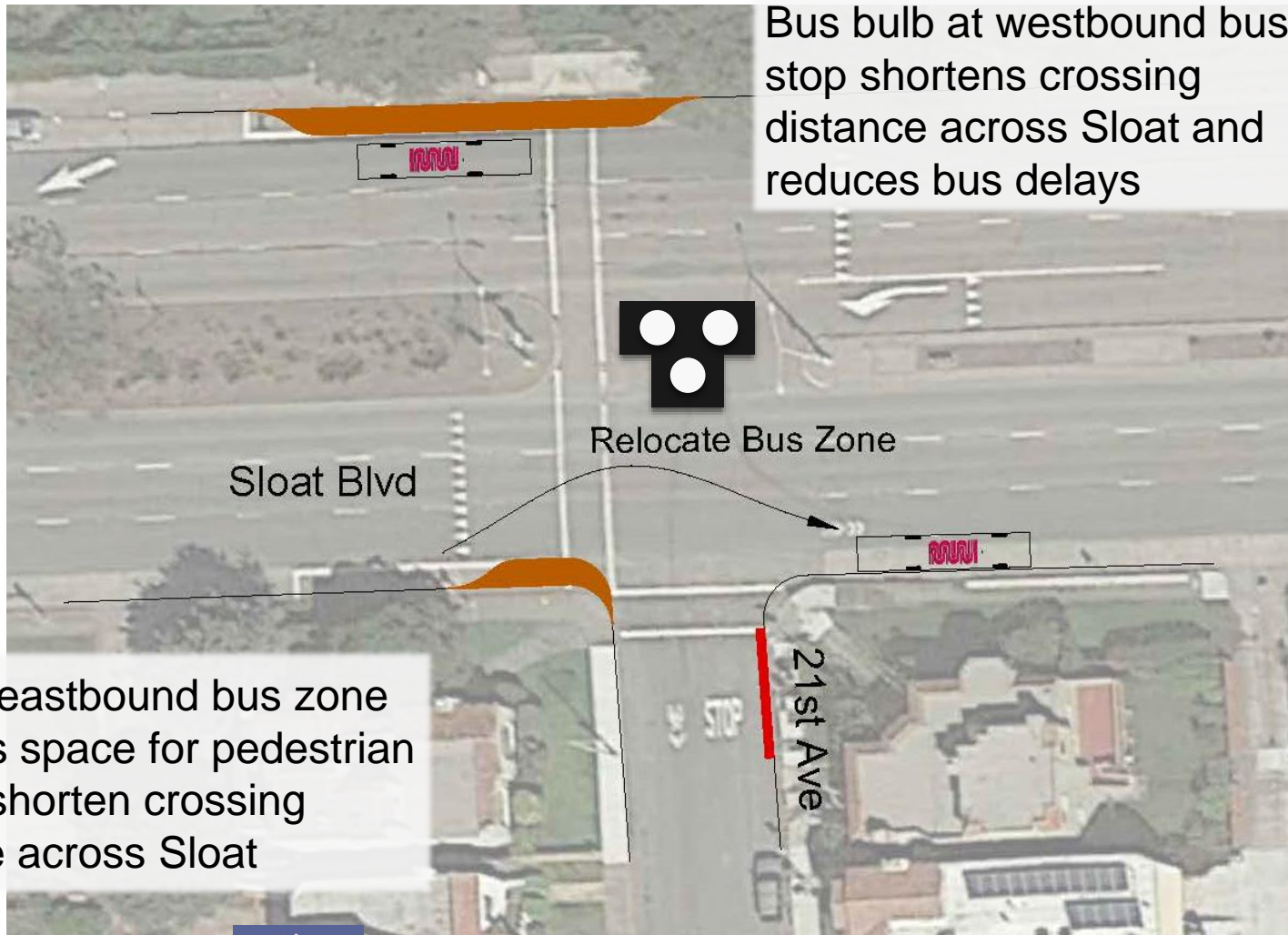


# Sloat Blvd and 21<sup>st</sup> Ave

## Revised Project Graphics



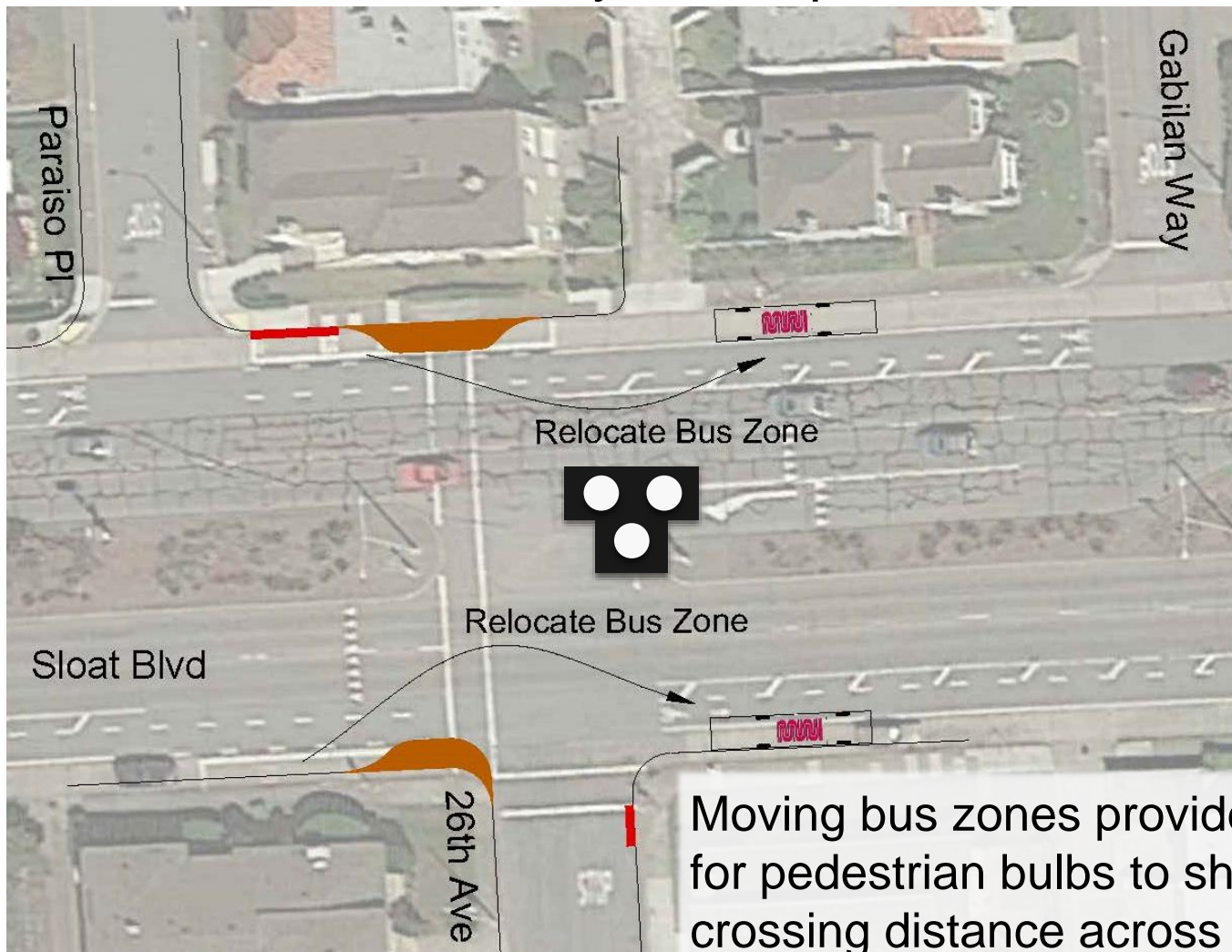
Bus bulb at westbound bus stop shortens crossing distance across Sloat and reduces bus delays

Moving eastbound bus zone provides space for pedestrian bulb to shorten crossing distance across Sloat



# Sloat Blvd and 26<sup>th</sup> Ave

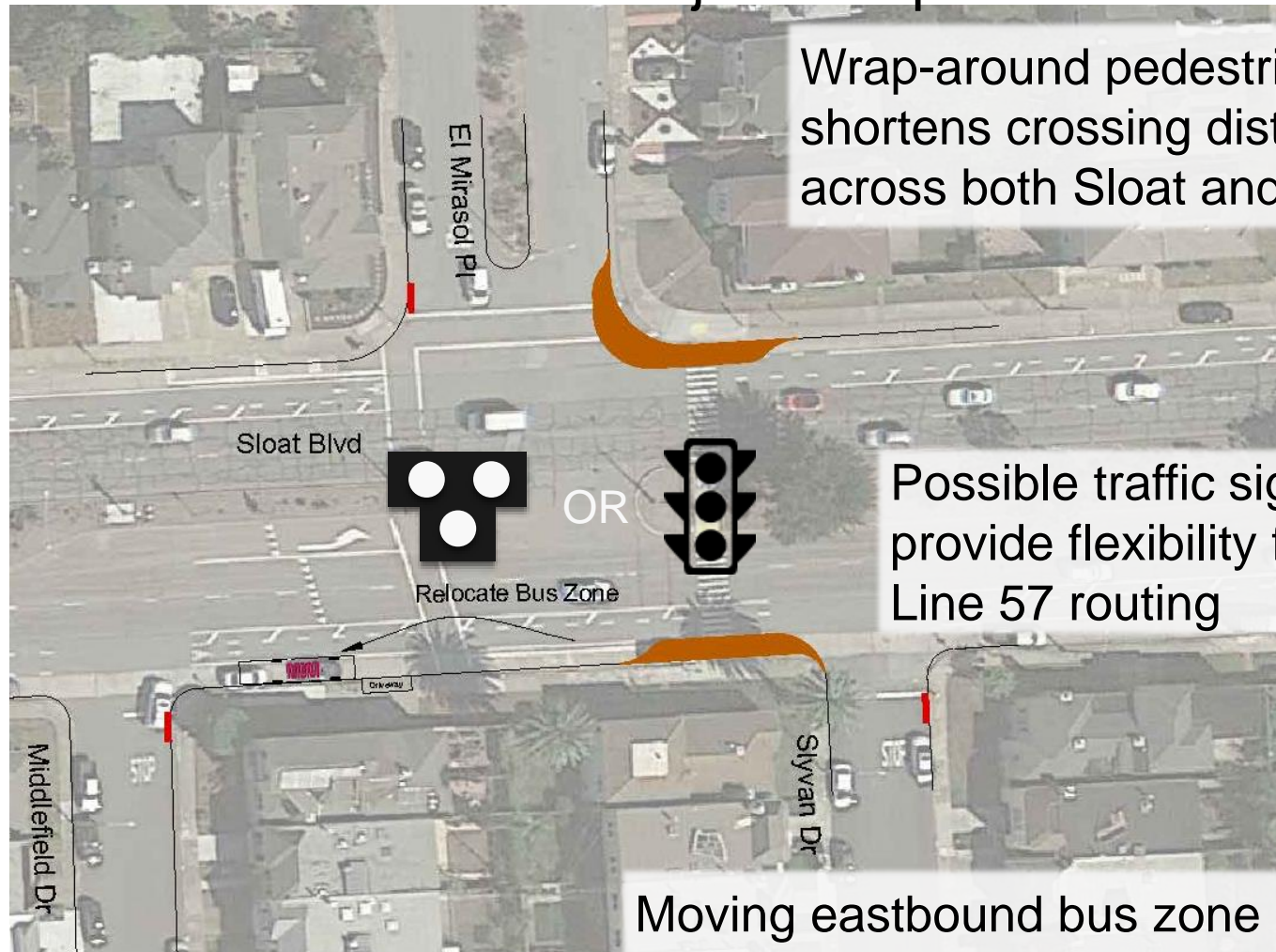
## Revised Project Graphics





# Sloat Blvd and El Mirasol Pl

## Revised Project Graphics



Wrap-around pedestrian bulb shortens crossing distance across both Sloat and El Mirasol

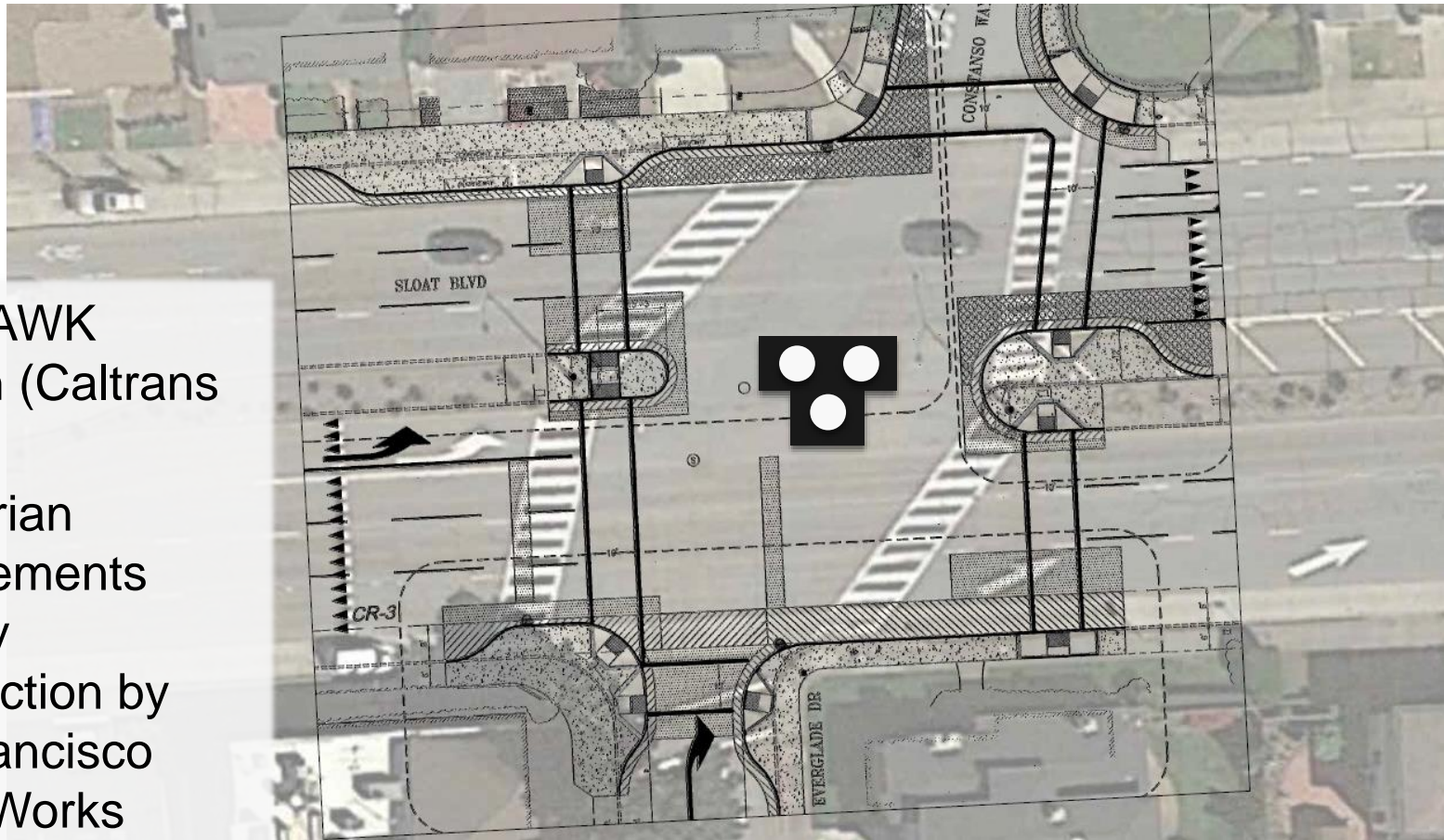
Possible traffic signal would provide flexibility for Muni Line 57 routing

Moving eastbound bus zone provides space for pedestrian bulb to shorten crossing distance across Sloat



# Sloat Blvd and Everglade Dr

## Revised Project Graphics



New HAWK  
Beacon (Caltrans  
project)  
Pedestrian  
improvements  
recently  
construction by  
San Francisco  
Public Works



**SFMTA**  
Municipal Transportation Agency





# Sloat Blvd and 36<sup>th</sup> Ave

## Revised Project Graphics

Bulbs on Sloat infeasible due to utility conflicts. Pedestrian bulb shortens crossing distance of 36<sup>th</sup> Avenue.

