

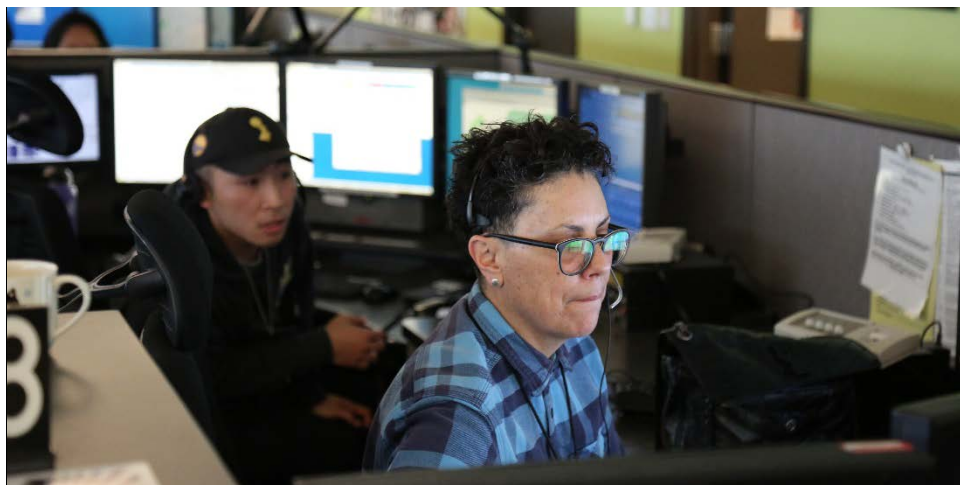
ESER 2020

Earthquake Safety and Emergency Response Bond



ONESF
Building Our Future

#safeguardingSF



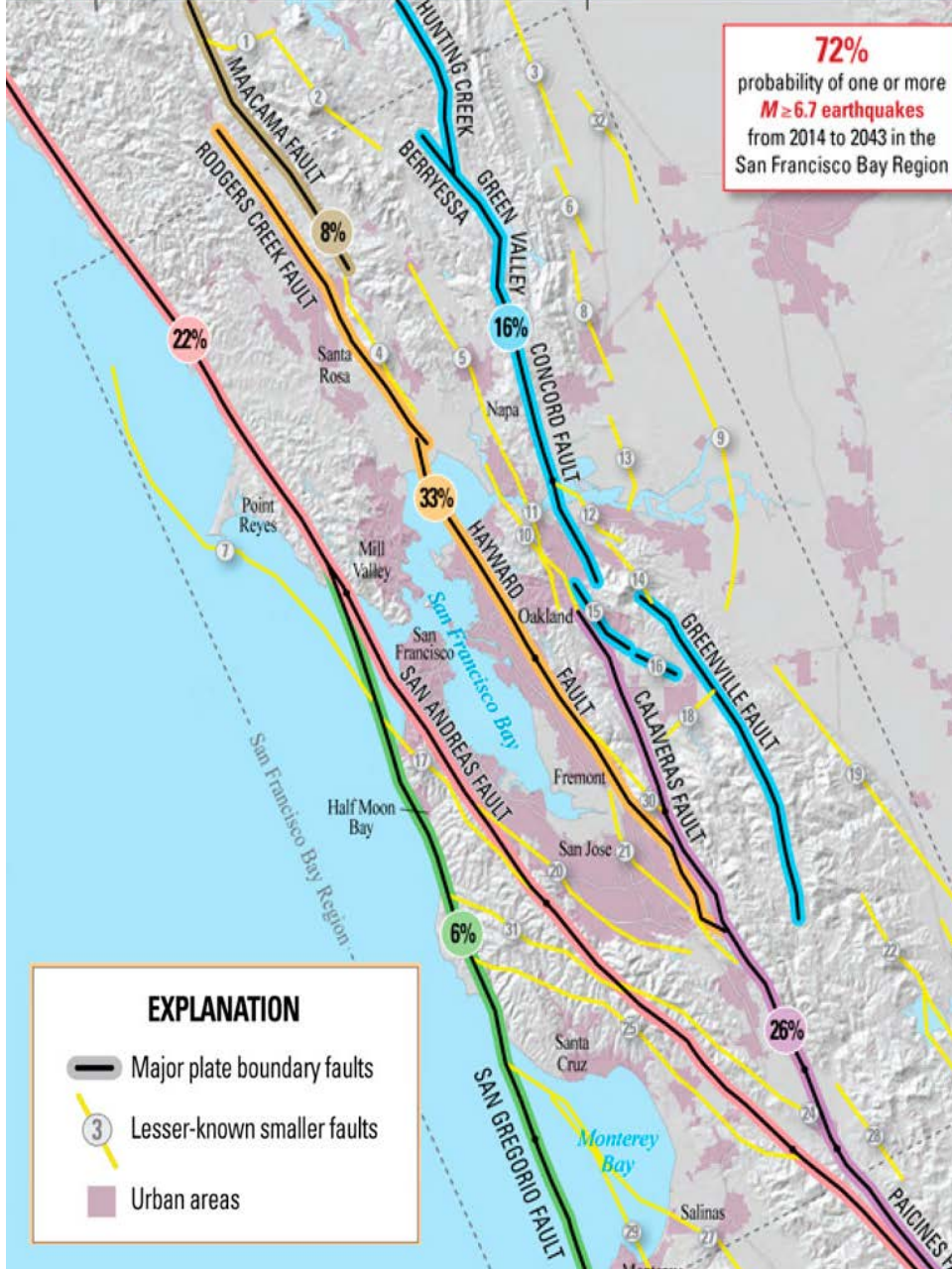
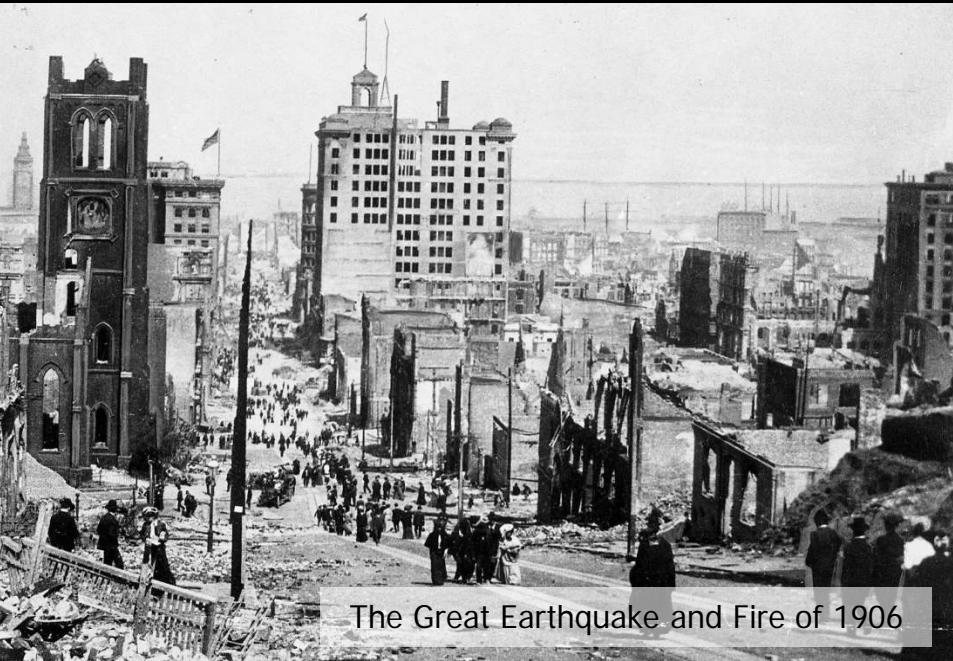
ESER 2020 Bond Components

Program	Budget
Emergency Firefighting Water System	\$153.5 million
Neighborhood Fire Stations and Support Facilities	\$275 million
Police District Stations and Support Facilities	\$120.8 million
Disaster Response Facilities	\$70 million
9-1-1 Call Center	\$9.2 million
Total	\$628.5 million



San Francisco

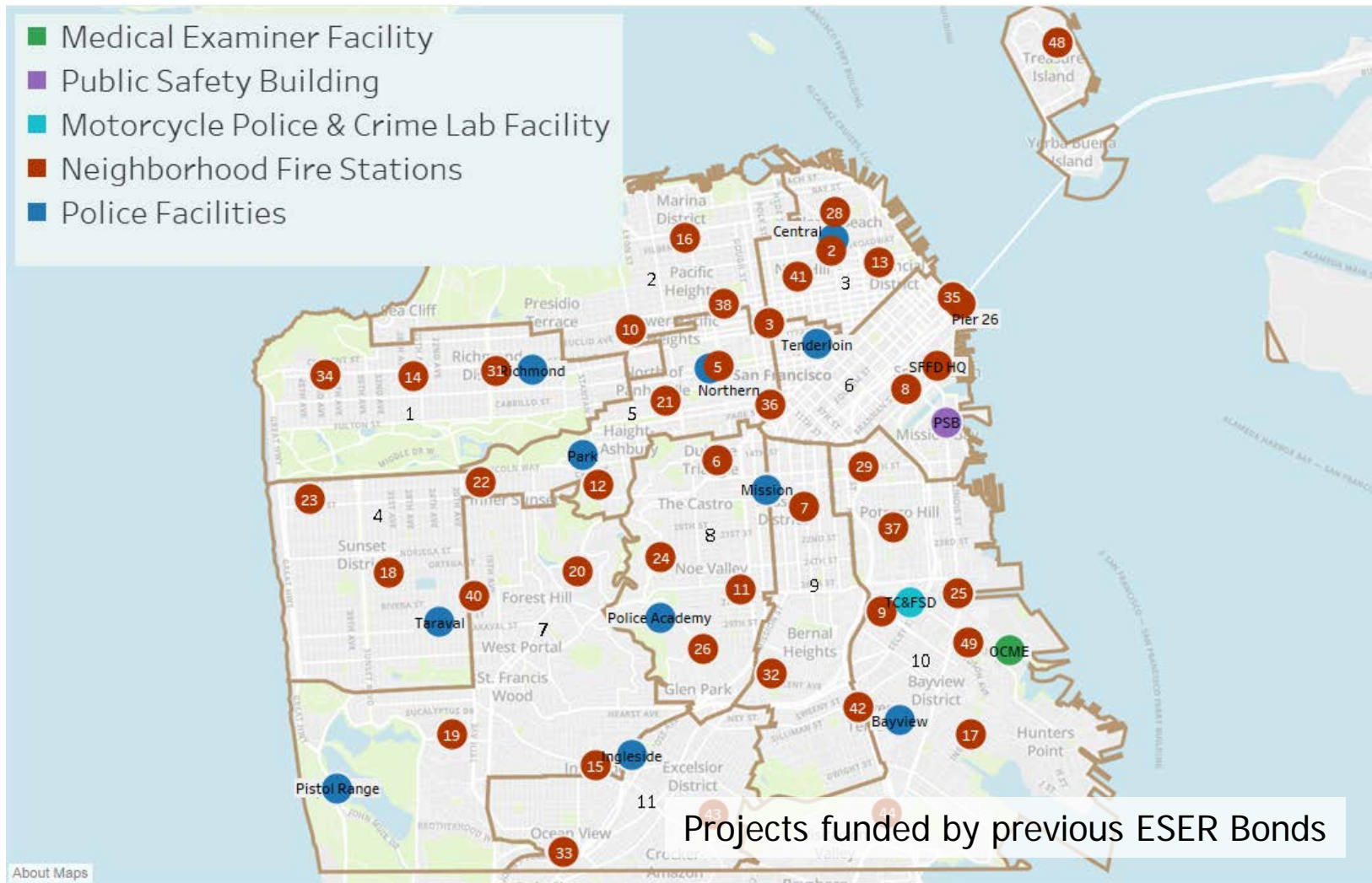
A City Built on Fault Lines



ESER Accomplishments



Previous ESER Bonds Project Locations (Facilities)



ESER Work Underway

- **Motorcycle Police and Crime Lab:** construction scheduled to begin this summer



- **Fireboat Station at Pier 22 1/2:** construction scheduled to run through the end of 2020



ESER 2020 Scope of Work

- **Emergency Firefighting Water System:** focusing on the City's western neighborhoods
- **Neighborhood Fire Stations & Support Facilities:** seismic upgrades and comprehensive renovations; roof and window replacements; new back-up emergency generators and apparatus bay doors; heating, ventilation and air conditioning improvements; replacing the training facility at a site to be determined
- **District Police Stations and Support Facilities:** comprehensive renovations; facility expansions; accessibility, mechanical, electrical, plumbing and exterior envelope improvements
- **Disaster Response Facilities:** retrofitting and renovating facilities and infrastructure for disaster response purposes such as shelter and mass aid
- **9-1-1 Call Center:** increasing the number of dispatch stations and the amount of training space



ESER 2020 Prioritization: Facilities

Criteria spelled out in the bond report:

Fire and Police Stations

Similar to ESER 2010 and 2014, facilities projects at public safety stations will be selected based on the relative seismic risk, renewal need, and operational and tactical importance of the facilities to ensure effective deployment of first responders in the event of a major earthquake or disaster.

Disaster Response Facilities

City-owned buildings with sufficient capacity to serve multiple disaster response functions that pose serious risk of casualties and/or significant financial impact will be prioritized.

ESER 2020 Prioritization: EFWS

West Side

Phase 1 funded through combination of ESER 2020 and SFPUC revenue bonds.

Phase 2 to be constructed in the next ESER bond.

Manifold Projects

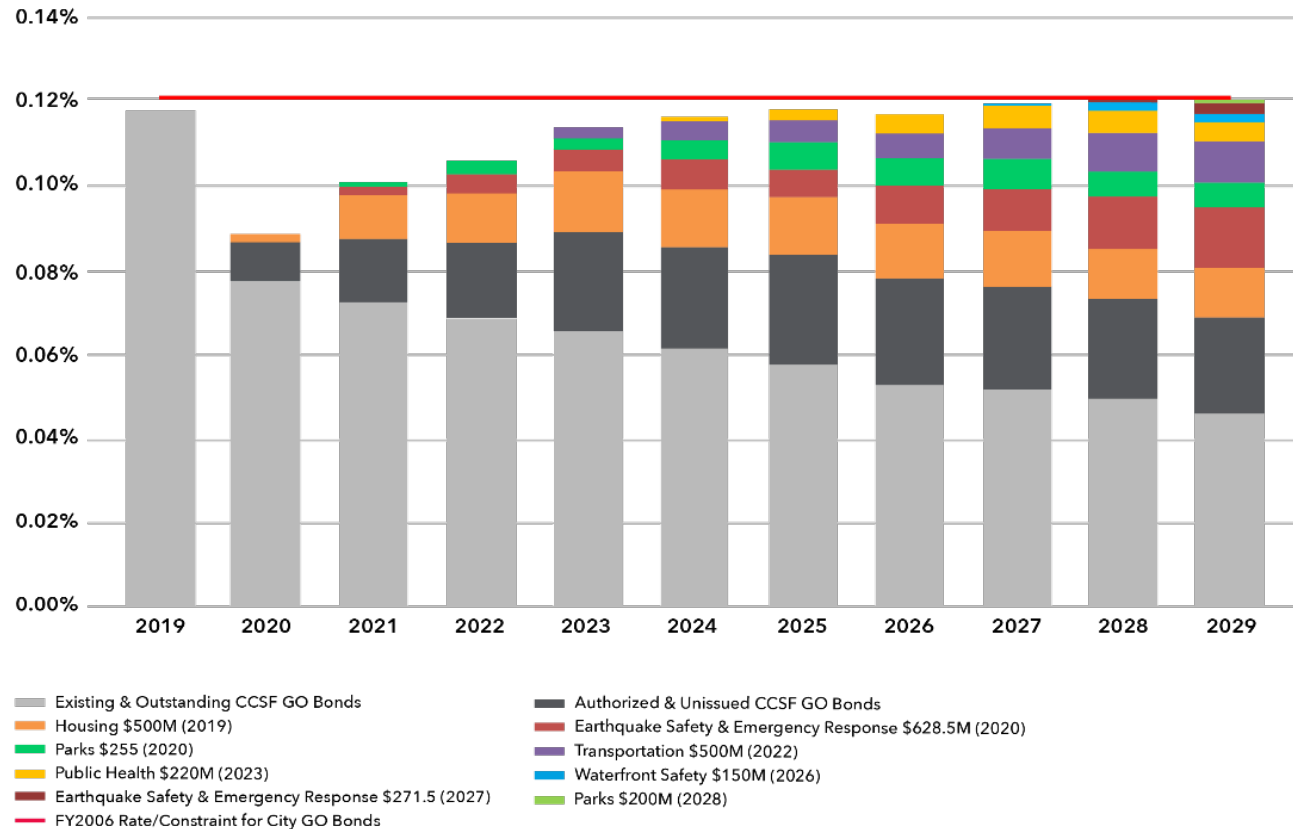


The City's Ten-Year Capital Plan

- The City's commitment to strategic, long-term planning to address infrastructure needs
- Prioritizes seismic and life safety projects
- City-programmed bonds do not raise property tax rate
- Strong accountability and oversight measures

• www.onesanfrancisco.org

Proposed FY 2020-2029 Capital Plan General Obligation (G.O.) Bond Program



Keeping Up with a Growing City

- ESER 2020 will allow us to act now for a safer tomorrow
- With a growing population comes an increase in calls for emergency response
- Responding quickly in an emergency reduces the number of injuries, deaths and damage done to people and property



ESER: Safeguarding San Francisco

This bond is vital to ensure our public safety systems are ready for the next major earthquake, fire or other disaster and to build a resilient San Francisco.

sfearthquakesafety.org

ESER Accomplishments

