



Earthquake Safety and Emergency Response Bond Program 2010 & 2014

Quarterly Status Report December 2016

Edwin M. Lee
Mayor

Mohammed Nuru
Director

Edgar Lopez
Deputy Director
and City Architect

Building Design & Construction
30 Van Ness Ave., 4th floor
San Francisco, CA 94102
tel 415-557-4700

sfpublicworks.org
[facebook.com/sfpublicworks](https://www.facebook.com/sfpublicworks)
twitter.com/sfpublicworks



Laguna Honda Hospital Cistern



Public Safety Building, Station 4



Station 40, Roof Replacement



Office of the Chief Medical Examiner

Prepared for the:

- Citizens' General Obligation Bond Oversight Committee
- Office of the Chief Medical Examiner
- San Francisco Fire Department
- San Francisco Police Department
- Public Utilities Commission

Submitted by
Charles Higuera
Program Manager

Earthquake Safety and Emergency Response Bond Program (ESER 2010 & 2014)

Table of Contents

Table of Contents.....	1
Executive Summary	1
Program Summary and Status	6
Public Safety Building	6
Neighborhood Fire Stations (ESER 2010)	8
Neighborhood Fire Stations (ESER 2014)	13
Emergency Firefighting Water System	23
Office of the Chief Medical Examiner (OCME) (ESER 2014)	27
Traffic Company & Forensic Services Division (ESER 2014)	30
Police Facilities	33
Budget, Funding and Expenditures.....	38
ESER 2010	
ESER 2014	
Attachments	

Executive Summary

ESER 2010

The Earthquake Safety and Emergency Response (ESER 2010) Bond Program consists of three components: the **Public Safety Building (PSB)**, the **Neighborhood Fire Stations & Support Facilities (NFS)**, and the **Emergency Firefighting Water System (EFWS)**. These components' particular projects are proceeding apace, hewing to stipulated schedules and budgets. Some projects confront unanticipated schedule impacts such as delayed DBI permitting and Civic Design Review approval. The impacts are managed to avoid as much as possible, the undue consequences to client department(s)' expressed needs and expectations. To date, there have been no upsets that would seriously compromise client department's expectations for the successful delivery of any project.

The following is a brief summary of each component's status.

Public Safety Building

Public Works construction management staff continues to assist client users building engineers to operate and start of maintenance of building systems, and establish protocol for addressing warranty items. Punchlist work at building interior and sitework is expected to continue through Final Completion in May2016.

The street will be open to public pending completion of sidewalk and other sitework by Mission Bay Development Group.

Project Cost, inclusive of all construction change orders to-date, is tracking within the total project budget of \$243M.

Neighborhood Fire Stations & Support Facilities

Seismic Projects: Station 16 and Station 5

Station 16: Construction bids were received on June 29, 2016. Award is in progress to Roebuck Construction.

Station 5: CM/GC pre-construction services with Thompson Builders has concluded. Procurement phase for trade bid packages begins in July. DBI approval of site permit and review of addendum is pending.

Earthquake Safety and Emergency Response Bond Program

(ESER 2010 & 2014)

Comprehensive Projects: Station 36

Station 36: Project was successfully completed and SFFD reoccupied the station on November 19, 2014. The Fire Department requested two elements of work apart from the basic scope of FS36 – new apparatus bay doors and rebuild the driveway/apron. The new apparatus bay doors are installed. The driveway-sidewalk repair must be undertaken to avoid the damaging of the underside of fire apparatus. As a result, an impact to ADA standards for accessibility emerged that must be addressed to ensure proper path of travel. Construction work begins in July 2016.

Focused Scope Projects

Focused Scope portfolio is organized into six packages. All ESER 2010 Focused Scope work (roofing, exterior envelope, generator, shower, mechanical, and window) has been complete. Refer to the Neighborhood Fire Stations full report for further detail.

Emergency Firefighting Water System (aka Auxiliary Water Supply System - AWSS)

Construction was completed for the Ashbury Heights Tank, Jones Street Tank, and Twin Peaks Reservoir contract (WD-2685). Construction continued for the Pumping Station 1 contract (WD-2686). Permitting activities continued for Pumping Station 2.

Construction continued for Cisterns D (WD-2745) and Cisterns E (WD-2746) contracts. Cisterns F (WD-2747) notice-to-proceed was issued.

Planning and design work continued for pipeline, tunnel, and Flexible Water Supply System projects.

Budget

To date, the ESER 2010 has received the proceeds of six bond sales totaling \$412,300,000. The expenditures through December 2016 are \$338,509,463 of which \$231,809,069 is for the Public Safety Building; \$32,499,355 is for the Neighborhood Fire Stations; \$70,981,787 is for the Auxiliary Water Supply System; and \$3,219,252 is for Bond Cost of Issuance, Bond oversight and accountability expenses. The expenditures are consistent with our spend-down forecast and are within budget. The breakdown of the proceeds received to-date is discussed in the [Budget, Funding and Expenditures](#) section of this report.

Executive Summary

ESER 2014

In June 2014, 79% of the voters approved Proposition A - Earthquake Safety and Emergency Response Bond 2014 (ESER 2014) for \$400M. ESER 2014 will pay for repairs that will allow San Francisco to quickly respond to a major earthquake or disaster.

The ESER 2014 is comprised of five components: **Office of the Chief Medical Examiner (OCME)**; **Traffic Control & Forensic Services Division (FSD)**; **Neighborhood Fire Stations (NFS)**; **Emergency Firefighting Water System (SFPUC)**; and **Police Facilities (PF)**. SFPUC will manage the Emergency Firefighting Water System component and Public Works will manage the remaining components.

OCME Facility

Clark Construction is providing CM/GC services for the OCME project. Construction started on November 17, 2015. Final completion is scheduled in August 2017.

KMD Architects are providing A/E services.

Vanir/Saylor, a Joint Venture Partnership, is providing supporting management services, mainly in the review of cost estimates, construction schedule, and other project related activities.

The project is anticipated to achieve LEED Gold certification.

SFPD TC & FSD

Following user meetings on 6/22-23, HOK delivered 25% SD on 6/29/16 providing two options for the program addition of the Body Worn Camera (BWC) Unit. Option 1 was tasked to remain budget neutral describing necessary programmatic concessions to remain below the \$95M budget. Option 2, a planning and costing exercise, adds the BWC but allows the building to increase in size/cost without the programmatic concessions necessary in option 1 to remain budget neutral. Both will be presented to SFPD on 7/12/16 to learn if SFPD intends to seek additional project funding outside of the Bond source to fund the addition of the BWC Unit.

Neighborhood Fire Stations

The ESER 2014 NFS program is comprised of three sub-components: Focused Scope, Comprehensive, and Seismic projects. Fire Chief Joanne Hayes-White approved the portfolio of projects in April 2016.

Earthquake Safety and Emergency Response Bond Program

(ESER 2010 & 2014)

Stations for each sub-component of work (Focused Scope, Comprehensive, and Seismic) have been identified. The early Focused Scope projects are organized into nine (9) packages: Apparatus Bay Doors, Roofing, Showers, Windows, Exterior Envelopes, Mechanical, Emergency Generators, Sidewalks, and Security Access. Refer to the Neighborhood Fire Stations full report for further detail.

Station 35 – Delivery method has been identified as Design-Build and approved by Fire Administration. RFQ is currently under development. Port Commission briefing is scheduled for July 2016. Design of ancillary project for additional berthing at Pier 26 bid in June 26 and award is in progress to Vortex Marine Construction.

Police Facilities

ADA Package 1: Mission, Bayview, Central, and Tenderloin Police Station are substantially completed, Northern Police Station is 90% complete as of 12/30/2016.

ADA Package 2: Project is awarded to Roebuck Construction as they are the lowest bidder, NTP was issued in September 26, 2016. Construction will begin January 2017.

Northern Station Comprehensive Upgrade: 100% bid documents were completed in October 2016, project was advertised in November 2016, and bids are due in January 2017.

MEP Package 1: 100% bid documents were completed in November 2016, project was advertised in December 2016, and bids are due in January 2017.

Ingleside Station Renovation: 90% design documents were completed in December 2016, and project was submitted to DBI for permit application in the same month.

Park Police Station Renovation: 90% design documents were completed in December 2016, and project was submitted to DBI for permit application in the same month.

New Firearms Simulator Training Facility: Project was submitted to Planning Department in October 2016, the Planning Department is currently conducting an archaeology study of the site. The San Francisco Arts Commission approved an exemption for Civic Design Review for the project in November 2016. 90% design documents were completed in November 2016 and final design documents are anticipated in early January 2017.

Budget

The ESER 2014 budget is \$400,000,000 with an authorized appropriation \$210,200,403. The expenditures through December 2016 are \$76,807,384 of which \$36,359,170 is for the Office of the Chief Medical Examiner; \$22,073,747 is for the Traffic Company & Forensic

Earthquake Safety and Emergency Response Bond Program

(ESER 2010 & 2014)

Services Division; \$4,351,700 is for the Police Facilities; \$8,546,766 is for the Neighborhood Fire Stations; \$3,699,759 is for Emergency Firefighting Water System (EFWS); and \$1,776,242 is for Oversight, Accountability & Cost of Issuance.

The breakdown of the proceeds received is discussed in the [Budget, Funding and Expenditures](#) section of this report.

Other Information

For more information, visit the ESER web site at www.sfearthquakesafety.org.

Program Summary and Status

Public Safety Building

Substantial Completion – April 28, 2015



Photo © Tim Griffith, 2015

Location: Block 8 in the Mission Bay South Redevelopment Area. The block is bounded by Mission Rock, Third, and China Basin Streets.

Project Description: The Public Safety Building (PSB) is meant to provide a new venue for the SFPD Headquarters – effectively the command and control administration of the City’s police department-including the relocation of Southern District Station and a new Mission Bay Fire Station. Included in the project is the reuse of Fire Station #30, which will serve as a multi-purpose facility for the Fire Department and the community. Historic resource consultants have determined that the existing fire station is eligible for the National Register of Historic Places. Consistent with the Mission Bay SEIR Addendum No. 7, Mitigation Measures, Item D.02, this facility will be retained and reused in a manner that preserves its

Earthquake Safety and Emergency Response Bond Program

(ESER 2010 & 2014)

historic integrity. The other components of the project will be designed to be respectful of the historic integrity of the existing fire station.

Both the Police Headquarters and the Southern District Police station are located at 850 Bryant also known as the Hall of Justice. This facility is over 50 years old and does not meet current seismic codes and requirements. In the event of a major earthquake, this building is not expected to be operational. The PSB will provide a new venue for these two police elements that are a part of a larger strategy to replace the Hall of Justice, established in the City's Capital Plan as the *Justice Facilities Improvement Program* (JFIP) Police Investigations and associated property and evidence storage will remain at the Hall.

Project Background: The functionality of the entire police department in the event of a major catastrophe relies on the ability of the police leadership within police command center headquarters to promptly and properly coordinate public safety services in the city. The district station plays an equally critical role in providing responsive public safety to residents of San Francisco in a timely manner. This station includes those working the front line that are the first to arrive at a crime scene, maintain the peace during difficult situations, assist in the investigation of criminal activity; provide support to other first responders including the Fire Department and emergency medical services.

Project Status:

Construction Activities:

- Completed

Project Schedule:

SUBSTANTIAL COMPLETION: April 28, 2015

FINAL COMPLETION: October/ November 2015

FIRST DAY OF BUSINESS of POLICE/ FIRE STATIONS: March 30, 2015

FIRST DAY OF BUSINESS of POLICE HQ: April 13, 2015

BUILDING INAUGURATION: April 16, 2015

Project Budget: Project Cost, inclusive of all change orders to date, is tracking within the Total Project Budget of \$243M. Refer to the [Attachment 1 – Program Budget Report](#) for further detail.

Neighborhood Fire Stations (ESER 2010)



Project Description: The ESER bond will renovate or replace selected fire stations to provide improved safety and a healthy work environment for the firefighters. The selected stations are determined according to their importance for achieving the most effective delivery of fire suppression and emergency medical services possible.

Project Background: All of the 42 San Francisco Fire Stations have as a result of minimal deferred maintenance over decades, yielded building conditions that potentially compromise the safety and health of firefighters. Many stations have structural/seismic, and other deficiencies that could inhibit their continuous functionality. Some may not be operational after a large earthquake or other disasters, hindering the ability of the firefighters to respond to calls for service.

Prior to approval of the bond program, the majority of the City's fire stations and support facilities were generally assessed for their respective condition and to identify vulnerabilities or deficiencies that could compromise their essential role as deployment venues for first responders.

For budget planning purposes, the assessment reports were reviewed by cost estimators who prepared estimates of the cost of correcting the conditions noted in the assessments. The cost estimates indicate only the overall "order of magnitude" of the various facility deficiencies and relative proportions of various types of work.

Preliminary assessment of the neighborhood fire stations indicate that the sum of all existing deficiencies would require a budget exceeding \$350M to correct, significantly more funds than

Earthquake Safety and Emergency Response Bond Program

(ESER 2010 & 2014)

are available in this bond for such purposes. Therefore, additional detailed planning is required to focus the expenditures of this bond towards the most beneficial and cost effective immediate rehabilitation and/or improvement projects.

A list of projects to be completed by the ESER 2010 bond was identified by Public Works and the Fire Administration, and accepted by the Fire Commission at their meeting of September 23, 2010.

The ESER 2010 bond program is anticipated to complete improvements to 16 of the 42 neighborhood fire stations. The approved slate of projects was presented to the SF Fire Commission on April 26, 2012.

Project Status:

SFFD evaluated project scope and program budget options prepared by Public Works and approved on February 29, 2012 a final slate of Groups I, II and III projects to be completed as part of ESER 2010. The approved slate of projects was presented to, and accepted by, the SF Fire Commission on April 26, 2012.

Seismic Projects: Stations 16 and 5

Station 16:

Design services are being provided by Public Works BDC/IDC.

The Design team incorporated SFFD-directed changes, and submitted the building permit addendum on December 8, 2015.

As a result of the significant redesign of the interior layout, as directed by the Fire Department, the scheduled start of construction was delayed. Request for Proposals were reissued to prequalified general contractors with bids due in June 2016. The forecast cost at completion reflects an increase in construction and design costs of 22%. A budget revision to increase the budget is in progress. Refer to Appendix 2 – Time and Schedule.

Station 5:

Design services are being provided by Public Works BDC/IDC.

The kick-off meeting with the selected CM/GC Thompson Builders was held on December 16, 2015. Pre-construction services concluded in June 2016. Procurement phase begins in July 2016 with issuance of RFQ's to potential respondents of the trade bid packages.

A budget revision increase to reflect the delay in project construction start is in progress. Refer to Appendix 2 – Time and Schedule.

Fire Boat Station 35: (See ESER 2014 this report)

Earthquake Safety and Emergency Response Bond Program

(ESER 2010 & 2014)

Fire Boat Station 35 will occur within ESER 2014 Program, however, the pre-design and CEQA and environmental review costs of \$687,125 will reside under ESER 2010. The budget that was identified for Station 35 was funded by ESER 2010 and the Fire Facilities Bonds funds totaling \$17.M. The ESER 2010 funding will be used to offset Station 5 and 16. The Fire Facilities Bond funds will continue to supplement Station 35 under ESER 2014.

Equipment Logistics Center (ELC):

The ELC project was identified after the passage of the bond – it was suggested as a project combining the Bureau of Equipment (BOE) and Emergency Medical Services (EMS). In this configuration, the sum total of functional program area makes it infeasible to occur at the current EMS venue at 1415 Evans; more significantly, the budget for such a project is not available within the ESER 2010 NFS funding.

SFFD requested Public Works to prepare a program analysis and cost estimate for the EMS for consideration in proposed the 2016 SFDPH bond. The analysis and prospective project at the location of FS9 was completed during this reporting period – see ESER 2014 for description of work in this regard.

Comprehensive Project: Station 36

Design services are being provided by Paulett Taggart Architects through Public Works-BDC's as-needed consultant contracting program.

The design and construction are proceeding on track to meet LEED Gold for Commercial Interiors standards as approved by the Green Building Coordinator, San Francisco Department of the Environment. Commissioning consultant Enovity, contracted through PUC, is reviewing all installation, testing, and start up activities to confirm requirements are met. SFFD reoccupied the station on November 19, 2014.

SFFD directed the team to add new Apparatus Bay doors to the project funded by savings on Focused Scope projects. This is a long lead item; delivery and installation proceeded in October 2015. The apron and sidewalk design in front of the station was determined to require modification to accommodate both accessibility requirements and SFFD equipment clearances needed. The resulting work in the sidewalk and street will require multiple additional approvals and permits. Start of work to install apparatus bay doors and modification of sidewalk and street apron are pursuant to approval by SFMTA and Planning. Design work has been rendered, and Public Works BSM issued the permit on November 17, 2015. SFMTA and Planning Department approval was granted to allow permit issuance. Construction by Public Works did not proceed as scheduled in January 2016. The project Contractor is currently pricing this scope with bids scheduled to be received in April 2016. The contractor's price was accepted, and this work will proceed in July 2016.

The forecast cost at completion reflects an increase in construction and design costs of 18%. A budget revision to increase the budget is in progress. Refer to Appendix 2 – Time and Schedule.

Earthquake Safety and Emergency Response Bond Program

(ESER 2010 & 2014)

Focused Scope Projects

Design services are being provided by Public Works BDC/IDC. Four (4) of the five (5) emergency generators are designed by GHD (an as-needed electrical engineering consultant.)

The cost at completion reflects a savings of 13% which is being used to offset the costs for Station 36 and it supplements the Program-wide reserve by 81%. A budget revision to reflect these changes is in progress.

Roofs – 15 Stations

Summary: The scope consists of installing new roofing systems and upgrading exhaust fans on fifteen (15) stations. 2011 Package (Stations 6, 38, 41 and 42), Package 1 (Station 28); Package 2 (Station 2); Package 3 (Stations 18, 40 and 31), Package 4 (Stations 15, 17, 26, and 32), and Package 5 (Stations 10 and 13) roofs. Per SFFD direction, the 2011 package and Package 2 were completed by JOC contractors, and the balance of the projects were bid out to C39 roofing contractors.

Detail: All work is complete.

Exterior Envelope (BBR) – 16 Stations

Summary: The scope consists of paint and ancillary work to prevent water intrusion at sixteen (16) stations. Per SFFD direction, BBR executed the paint work at six (6) Stations, 6, 28, 38, 41, 42, and 49 while the remaining work, Package 4 (Stations 15, 32 and 40), Package 5 (Stations 10, 13, 17 & 26), and Package 6 (stations 2, 18 & 31) were bid out through Public Works public bidding process to B or C33 license contractors due to the complexity of scope at these stations.

Detail: All work is complete.

Emergency Generator Replacement – 5 Stations

Summary: The scope consists of installing new Emergency Generators and related ancillary scopes of work at five (5) Stations 6, 12, 15, 17, and 21. Per SFFD direction, BBR executed the work at Station 15; a JOC contractor executed the work at Station 17; and Stations 6, 12 and 21 were bid through the Public Works public bidding process to C10 license contractors.

Detail: Stations 6, 12, 15 and 21 were completed in 2014. Station 17 work was completed on December 11, 2015 and close-out reached in September 2016.

Detail: All work is complete.

Shower Reconstruction – 9 Stations

Summary: The scope of work consists of installing new shower stalls including shower pans, shower heads, divider walls, glass doors, floor drains, p-traps, access panels, and ancillary scopes of works at nine (9) Stations, 6, 13, 15, 17, 18, 26, 38, 40 & 41. Station 6 was completed by BBR in July 2013. Station 15 was completed by JOC Contractor, Rodan Builder, in September 2013.

Earthquake Safety and Emergency Response Bond Program

(ESER 2010 & 2014)

Stations 13, 18, 26, 38, 40 & 41 were bid through the Public Works public bidding process to B license contractors. Stations 17 and 18 were put on hold by SFFD due to scope complexity.

Detail: All work is complete.

Mechanical Scope (JOC) – 15 Stations

Summary: The scope is structured into two phases: Phase 1 – Investigation and Scope Validation, and Phase 2 – Execution of Work. The stations were divided into two groups, Group 1 – four (4) stations and Group 2 – eleven (11) stations. Group 1 (Stations 6, 17, 38 and 42) had an NTP issued on May 24, 2013. The stations were substantially completed in August 2013, and final completed by Azul (JOC Contractor) in November 2013. Group 2 (Stations 2, 10, 13, 15, 18, 26, 28, 31, 32, 40, 41) were awarded to Rodan (JOC Contractor). NTP was issued on December 16, 2013. Work started on January 2, 2014, and reached final completion in November 2014.

Detail: All work is complete.

Window Repair (BBR) - 12 stations

Summary: The scope consists of installing new latch, handle, weep holes, sealant and weather-strip to existing windows, replacing broken panes of glasses, and adjusting alignment and resealing the perimeter of the frame to water tight at twelve (12) Stations, 2, 6, 17, 25, 26, 28, 31, 32, 38, 40, 41 and 42. BBR was selected to perform the work per SFFD direction. The first Package including Stations 28, 38, 41 and 42 started in April 2012 and completed in June 2012; the second package including Stations 6, 17, 32 and 40 began in April 2013 and finished in June 2013; and the third package including Stations 2, 25, 26 and 31 started construction in November 2013, and completed in January 2014.

Detail: All work is complete.

Historic Evaluation and Environmental Review

Summary: CEQA reviews and approvals proceed apace coordinated with the overall design and construction schedule.

Detail: Historic evaluation site visits were completed at 21 stations (14 Focused Scope / Alternate stations; 6 Seismic / Comprehensive stations; and the Fire Boat station.)

Project Budget:

Refer to the [Attachment 1 – Program Budget Report](#).

Earthquake Safety and Emergency Response Bond Program

(ESER 2010 & 2014)

Neighborhood Fire Stations (ESER 2014)

FS 3 Roof, HVAC and Generator Replacement – under construction



FS 26 Slab and Driveway Improvement



During Construction



Improvement Complete

Shower Renovation Package 1 – FS 13, 20, 22 & 34



FS 20 Complete



FS 34 Complete

Earthquake Safety and Emergency Response Bond Program

(ESER 2010 & 2014)

Projects' Description:

The ESER 2014 bond program is anticipated to continue the work of ESER 2010 bond, categorizing projects according to the three categories of Focused Scope, Comprehensive, and Seismic. The ESER 2014 bond program will continue to address identified and prioritized needs at Fire Stations that were previously not addressed under the 2010 program. Significant construction projects will have been completed at all SFFD Fire Stations at the conclusion of the 2010 and 2014 bond programs.

Project Status:

20 stations were assessed in first quarter 2015 to confirm scope needs per station. Cost estimation has been provided by consultant Saylor and Associates in second quarter 2015. SFFD endorsement of the ESER 2014 NFS program, i.e., scopes of work approved at each station is anticipated in the first quarter 2016. The preliminary recommended portfolio of project for ESER 2014 NFS was presented to the SFFD on September 30, 2015. SFFD asked that the proposed project be presented within the context of the entire scope of work anticipated for all facilities. It was suggested to revise the format presented for the ESER 2010 bond portfolio for consistency.

As-needed consultant Page and Turnbull, the expert Historic resource architect, performed historic evaluation assessments in April and compiled a historic evaluation draft report to Public Works for review and comment in September. Page and Turnbull has incorporated the city comments and forwarded the revised report to DBI Planning in October for an initial review and approval. DBI returned with comments and required the submittal of an environmental application (EEA) for the projects before the report can be reviewed. The application will be submitted to DBI in the first quarter of 2016.

After receipt of bond funding in October 2014, the NFS team moved forward with planning of initial (i.e. prior to the identification of the entire portfolio) Focused Scope projects: first apparatus bay doors, roof replacements, shower renovation, exterior envelope, windows, sidewalk, emergency generator, and mechanical projects. Design began in January 2015 as scheduled. In the second quarter, the first array of projects were advertised or assigned to PUBLIC WORKS Bureau of Building Repair to provide pricing for review prior to commencement of work *Immediate Focused Scope Projects*

Design services are being provided by Public Works BDC (architecture) /IDC (engineering). As-needed engineering consultant GHD is working on the generator projects as well as on the Station 3 mechanical and emergency generator.

- Apparatus Bay Doors
 - Package 1 (FS 15):
The scope is to install new apparatus bay doors at Fire Station 15. This is a pilot project with performance level drawings and specifications. The contract was awarded to Byron Epp Inc., on 6/9/16. City issued NTP on

Earthquake Safety and Emergency Response Bond Program

(ESER 2010 & 2014)

7/19/16 and pre-construction meeting held on 7/21/16. Door installation occurred 10/17/16 to 10/26/16. Substantial completion issued on 10/26/16 and final completion issued on 11/7/16. Project is in close-out.

- Package 2 (Fire Stations 6, 9, 10, 11, 17 & 38):
The scope is to relocate or modify the existing ancillary works in conflict with the new app bay door installation at various stations. The ancillary items are categorized as shown below.
 - Nederman Exhaust System – Relocation
 - Plumbing Utility Line – Relocation
 - Electrical conduit – Relocation
 - Fuel Pump Station/Island – Partial removal/trimming
 - Fuel Pump Hose Reel – Relocation
 - Locker – Relocation
 - Emergency Shut Off Valve – Relocation
 - Bollard – Partial removal/trimming

Public Works is still determining what app bay door replacement locations require ancillary work and the bid method to be utilized.

For FS 15, BBR performed the ancillary work which included fuel pump reel relocation, locker removal, bollard removal and electrical conduit rerouting. Construction started on 7/8/16 and reached substantial completion on 8/1/16. Final completion was reached on 8/12/16.

The ancillary work for App Bay Door Package 3 was identified and reviewed with BBR for FS 6, 10, and 17. PM met with BBR team on site on 11/22/16, so they could develop a cost proposal to perform this work.

- Package 3 (FS 6, 9, 10, 11, 17 & 38):
The scope is to replace and install new app bay doors at the 5 stations. The design team completed the bid documents on 10/26/16. The Planning Department provided CEQA Categorical Exemptions for the door replacement at FS 6, 10 and 17 on 11/29/16.
- Package 4 (Stations TBD):
The scope is to replace and install new app bay doors at 28 stations. The work plan was presented to SFFD on 9/26/16. The PM and Architect will visit each station, prepare a diagram, identify conflicts, and determine recommended door replacement type. The site visits occurred October through December and will continue in January 2017. Stations will be packaged together based on door type, special conditions, and geographic location.

Earthquake Safety and Emergency Response Bond Program

(ESER 2010 & 2014)

- Roof

- Package 1 (FS 3 - Roof/HVAC/Generator Replacement):

The scope is to replace and install the new roof, HVAC and emergency generator at Station 3. The City issued NTP on 2/1/16 to Centric Construction with the original substantial completion date scheduled for 7/29/16. A 30 calendar day non-compensable time extension for the fuel storage tank relocation to the roof was issued through Contract Change Order 1. An additional 25 calendar day non-compensable time extension for revised electrical work and additional roofing work was issued through Contract Change Order 2. The revised substantial completion date was 9/22/16, but will need to be extended again due to the remote fuel fill port issue described below. All other work not related to the fuel system was completed on 10/28/16.

On 8/29/16, the SFFD inspector was on site to test the new fuel piping, but rejected the location of the remote fuel fill port in the Apparatus Bay. The code requires the fill port to be located a minimum of 10 feet from any openings, so on 9/12/16, the project team had a subsequent site meet with SFFD inspector to discuss acceptable locations for the new fuel fill port. It was determined that the best location was behind the station on Cedar Street. The revised fuel piping and remote fill design were sent to the Contractor through ASI 16 on 10/6/16. The Contractor submitted their cost and time proposal for ASI 16 on 11/1/16. The City and contractor met on 12/15/16 to discuss the change order. After ongoing negotiations during December, the Contractor provided a revision on 12.28.16, and the City requested that the Contractor revise and resubmit their proposal again.

- Package 2 (FS 40 - Roof Replacement In-kind):

The scope calls for replacing the roof in-kind at Station 40. The project reached substantial completion on 3/30/16 and final completion on 4/15/16 per schedule. Project closed out.

- Package 3 (Not Used):

Package not used. FS 7 & 9 initially proposed - removed from the project list due to project repackaging. FS 7 roofing scope will be included in the FS 7 Comprehensive project. FS 9 will be grouped together with other stations as Package 6.

- Package 4 (FS 3 & 17 immediate repair):

Earthquake Safety and Emergency Response Bond Program

(ESER 2010 & 2014)

Due to unexpected rain in September 2015, an urgent roof patch was called for to immediately seal the roof to prevent further leakage before the Station 3 Roof/HVAC/Generator project receives an official award and can start work. All work complete by mid November 2015. Contractor's final payment was issued on 11/17/16 and project is in financial close-out.

- Package 5 (Stations 43 & 49 - roof and mechanical upgrades):
The scope is to remove and install new roof and rooftop mechanical units. FS 49 will also include roof diaphragm refastening. BDC submitted for a DBI permit on 9/30/16. The PM will work with Contract Prep to advertise this winter.
- Package 5 (Previous Package 6)(FS 9, 20, 23 and 24):
The scope of work includes replacement of roof at FS 20 and 23, and repairs of roof at FS 9 and 24. This Original Package 6 is now part of Package 5. The PM will work with Contract Prep to advertise this winter.
The 50% CDs for FS 20 and 23 roof were reviewed with SFFD on 9/12/16 and the estimating consultant provided cost estimates for FS 20 and 23 on 10/17/16 that were over the construction budget. The PM met with the estimating consultant on 11/18/16 to better understand the cost differences in the estimates. Consultant will review entire portfolio of focused scope projects and provide their recommendations on the budgets. The plans for FS 20 and 23 were submitted for DBI permit on 11/23/16 and were reviewed with SFFD on 11/28/16.
- Package 5 (Original Package 7)(FS 29):
The scope is to replace the roof and rooftop mechanical units at FS 29. This Original Package 6 is now part of Package 5. The PM will work with Contract Prep to advertise this winter.
The 50% CDs were reviewed with SFFD on 9/12/16 and submitted to the estimating consultant provided cost estimates on 10/17/16 that were over the construction budget. The PM met with the estimating consultant on 11/18/16 to better understand the cost differences in the estimates. Consultant will review entire portfolio of focused scope projects and provide their recommendations on the budgets. The plans for were submitted for DBI permit on 11/23/16 and were reviewed with SFFD on 11/28/16.

- Showers

- Package 1 (FS 13, 20, 22 & 34):
The scope consists of renovating the existing showers at 4 stations. Final payment issued and project closed out.
- Package 2 (FS 10, 17, 19 & 33)

Earthquake Safety and Emergency Response Bond Program

(ESER 2010 & 2014)

The scope is to renovate the existing showers at 4 stations. Per SFFD direction on 7/18/16, FS 10 was removed from the scope as construction for FS 5 and 16 will put additional personnel at FS 10. Since the shower renovation at FS 10 would not be completed before Oct 2016, it would cause inconvenience for the members assigned there in the interim phase. The design team finalized the bid documents on 10/14/16. The HazMat surveys occurred 10/17-10/19/16 and SAR completed the hazardous materials specifications on 11/15/16. Contract Prep to compile final bid docs for advertising in April.

- Windows

- Package 1 (FS 9, 19, 25 & 29):

The scope consists of installing new latch, handle, weep holes, sealant and weather-strip to existing windows and skylights, and adjusting alignment and resealing the perimeter of the frame to water tight at four stations. Package 1 which includes Stations 9, 19, 25 and 29 was completed by BBR in October 2015, ahead of schedule.

- Package 2 (Not Used):
Package not used.

- Package 3 (Not Used):
Package not used. FS 25 of Package 3 had moved to Package 1, as indicated in the report above. Package 1 was completed in October 2015.

- Package 4 (FS 8, 20 & 21):
Package 4 which includes Stations 8, 20, and 21 was completed by BBR in February 2016.

- Package 5 (FS 14, 33, 37 & 43):
FS 37 window work completed and closed-out. FS 14 started work on 8/29/16 and completed work on 10/19/16. FS's 14 & 37 are complete, and the only remaining window projects are FS's 43 and 33.

- Package 6 (FS 11, 12 & 23):
FS 11 and 23 window work completed and closed-out. FS 12 started work on 11/29/16 and is closed out.

- Exterior Envelopes

- Package 1 (FS 8, 20 & 23):

The scope includes new paint and power wash to exterior facade of the stations. BBR was selected to perform the work per SFFD direction. SFFD directed Public Works on 4/25/16 to put FS 8 Exterior Envelope on hold until

Earthquake Safety and Emergency Response Bond Program

(ESER 2010 & 2014)

the commercial mid-rise building that is under construction currently adjacent to FS 8 is complete which may be 1 year or longer away from April 2016. BBR's work on FS 20 & 23 are on hold until the roofing scope is complete at these stations. No work shall proceed until further notice.

- Package 2 (FS 24 & 34):
The scope of work consists of restoration of select exterior façade elements including brick re-pointing and limited replacement, lintel repair and re-coating, replacement of damaged glazing, repainting of stucco in select areas, replacement of parapet finishes (FS 24 only), limited flashing repair, and replacement of metal guard at FS 34. The Historical Conservation Consultant performed site visits on 11/15 and 11/18/16. They will provide design guidelines for the brick and historical element preservation and repair in early January.
- Package3 (FS 11 & 29):
The scope of work includes repair deficiencies at the exterior envelope of the stations, power wash all surfaces, and prepare substrates required to receive new paint at the exterior façade for FS 11 & 29. This project is on hold until the roofing scope is complete at these stations. No work shall proceed until further notice.
- Package 4 (FS 22):
The scope includes roofing, exterior envelope, waterproofing, and window repairs. BDC Arch are working on their 50% CDs incorporating the waterproofing consultant's recommendations received in December. BDC Arch will complete CDs in early June 2017.
- Mechanical
 - Package 1 (8, 9, 14, 20 & 41):
Per discussion with BBR on 4/28/16, BBR team may be able to diagnose and improve the rooftop mechanical units at various stations. PM met with BBR on 9/23/16 to discuss work logistics and plan. PM confirming mechanical scope of work at each station and then will schedule site walks with BBR after winter.
- Emergency Generators
 - Package 1 (FS 31):
The scope is to replace the existing emergency generator and ancillary work at FS 31. PM contacted GHD to provide engineering services for all generator packages. A site visit with GHD's electrical engineer held on 11/1/16. The

Earthquake Safety and Emergency Response Bond Program

(ESER 2010 & 2014)

engineer is preparing the proposal and PM is reviewing the generator assessment reports.

- Package 2 (FS 14)
The scope is to replace the generator vent only. This package's design will be grouped together with Package 1 design.
 - Package 3 (FS 24)
The scope is to replace the generator housing only. This package's design will be grouped together with Package 1 design.
 - Package 4 (FS 37)
The scope is to replace the generator housing only. This package's design will be grouped together with Package 1 design.
- Sidewalks/Slabs
 - Package 1 (FS 13):
The street and sidewalk replacement at FS 13 was declared as an urgent repair on July 10, 2015 due to serious bottoming out situation of the fire truck. Project closed out.
 - Package 2 (FS 31):
The scope is to remove the brick in the affected area, remove/replace/re-compact the sub-grade, install a structural concrete mat on the re-compact soil, and re-install with brick to match surrounding at the floor slab by the app bay door at FS 31. Project is closed out.
 - Package 3 (FS 26):
The scope is to remove and repair the apron/driveway outside the app bay doors. Project is closed out.
 - Package 4 (FS 20)
The scope is to repair the apron/driveway outside the fire station. SFFD and PM team are confirming project scope.
 - Access Control Systems
 - The scope is to provide electronic access control systems via card key at all exterior person-doors at all fire stations, including providing new or replacement of door hardware and electronic power systems as needed. The

Earthquake Safety and Emergency Response Bond Program

(ESER 2010 & 2014)

project is managed by SFFD with ESER funding. No direct PUBLIC WORKS involvement.

Hose Tower Removal & Roofing at FS 11, 12, 15 & 21

Fire Station 38 has been added to this package at the recommendation of the structural engineer. The scope of work is to remove existing hose towers and replace/improve existing roofs. Planning Department has not provided a response to the EEA submitted on 8/17/16 and response is now anticipated in December. Regulatory Affairs anticipates Planning will require a Negative Declaration to be prepared, this process will take 9 months. PM put the design on hold after completing the 50% submittal review on 11/14/16.

Fire Station 35

SFFD directed Public Works to resume project planning at the existing Station 35, Pier 22 ½ location upon parting company with the Warriors planned arena at Piers 30/32 in mid-2014. Programming and review of regulatory requirements with SF Port and Maritime expert architect Mary McGrath Architects completed this reporting period, to establish a project description sufficient for environmental review study and inform publication of the design-build RFQ. This document is under development, with City review anticipated in July 2016 and publication in August 2016.

Bureau of Equipment and Emergency Medical Services

SFFD requested Public Works to prepare a program analysis and cost estimate for the Bureau of Equipment (BOE) and the Emergency Medical Services (EMS) for consideration as a project or projects to be funded by ESER 2014.

Public Works completed program analysis and conducted test fits of for the EMS Facility at four locations. The optimal site was found to be a consolidation of two properties owned by the City, the equipment yard located behind Fire Station No. 9, at 2245 Jerrold Ave., combined with an adjacent vacant railroad right-of-way that extends from Jerrold Avenue to McKinnon Avenue. The budget for the EMS Facility is \$44M, for a project scheduled to be completed in 2020.

During the capital project prioritization and planning phase of ESER 2014, SFFD decided that, due to other high priority capital needs, the EMS Facility project could not be included in the list of projects to be constructed by ESER 2014. The EMS Facility project was deferred to Public Health and Safety Bond which was approved by the voters in November 2016 under the new project name of Ambulance Deployment Facility (ADF).

Public Works completed program analysis and conducted test fits of for the BOE Facility at two locations. The optimal scenario was found to be renovation of the existing SFFD facility at 1415 Evans, which would become feasible after EMS/ADF is relocated to another facility.

Earthquake Safety and Emergency Response Bond Program

(ESER 2010 & 2014)

Therefore, further work on the BOE Facility project is deferred to a subsequent capital program yet to be determined.

Earthquake Safety and Emergency Response Bond Program
(ESER 2010 & 2014)

Emergency Firefighting Water System



Laguna Honda Hospital cistern



18th Avenue & Moraga Street cistern



17th Avenue & Pacheco Street cistern, June 2016

Earthquake Safety and Emergency Response Bond Program

(ESER 2010 & 2014)

Program Description: The Earthquake Safety and Emergency Response Bonds will seismically improve the Auxiliary Water Supply System (AWSS) cisterns, pipelines, tunnels, and physical plant. Flexible Water Supply System (FWSS) components will be procured and implemented.

Program Background: The Emergency Firefighting Water System delivers AWSS high-pressure water and cistern water storage for fire suppression in several areas of the City. FWSS hose and pump components will provide above-ground water distribution for fire suppression, primarily in areas not directly served by AWSS. The Emergency Firefighting Water System is vital for protecting against the loss of life, homes, and businesses from fire following an earthquake. It is also used for the suppression of non-earthquake multiple-alarm fires.

Status:

Planning and Design

1. 19th Avenue Pipeline – Install new 20” AWSS pipe on 19th Avenue from Irving Street to Kirkham Street as part of Public Works’ 19th Avenue Roadway Improvements, Contract 2652J. Bid advertisement 1/2017.
2. Ashbury Bypass Pipeline – Install new 20” AWSS pipe near Ashbury Heights Tank, expected to be part of Public Works’ Clayton St, Clipper St, and Portola Dr. Pavement Renovation, Sewer Replacement and Water Installation, Contract 2500J. Design completion 11/2016.
3. Clarendon Supply – Provide a new AWSS water supply near the crest of Clarendon Avenue at Dellbrook Avenue. Design completion 4/2017.
4. Facilities Assessments – Assess tunnels and structures to guide future repairs and improvements. Planning completion 10/2016.
5. Fireboat Manifolds – Renovate the fireboat manifold and piping at Fort Mason Pier 1. Design completion 4/2017.
6. FWSS Street Crossings – Install new below-ground pipes across selected priority streets to allow FWSS hose deployment without impeding traffic on those streets. Planning completion 12/2016.
7. Irving Street Pipeline – Install new 20” AWSS pipe on Irving Street from 7th Street to 19th Street as part of Public Works’ Irving Streetscape & MUNI Forward, Contract 2541J. Bid advertisement 10/2016.
8. Lake Merced AWSS Pipeline and FWSS – Install new 20” AWSS pipe from Lake Merced Pump Station across Lake Merced Boulevard to the intersection of Vidal Drive and Higuera Avenue. Modify lake-pump discharge piping. Procure pump and hose equipment. Planning completion 12/2016.
9. McLaren Park Tank FWSS – Procure pump and hose equipment and modify tank discharge piping at McLaren Park Tank. Planning completion 12/2016.

Earthquake Safety and Emergency Response Bond Program

(ESER 2010 & 2014)

10. Pipeline Investigation and Remediation – Assess the 135-mile AWSS pipeline network condition using field investigations and probabilistic analysis. Recommend a long-term pipeline repair, replacement, and abandonment capital plan. Planning completion 2017.
11. Pumping Station 2 – Improve the seismic performance of the building structure. Bid advertisement approximately 1/2017 depending on permits and Pumping Station 1 WD-2686 contract progress.
12. Street Valve Motorization – Motorize street valves on AWSS pipelines for improved water flow control. Bid advertisement 12/2016.
13. Sunset Reservoir FWSS – Procure pump and hose equipment and modify reservoir discharge piping at Sunset Reservoir. Alternatives for this project are being reviewed due to operational considerations. Planning completion 12/2016.
14. University Mound Pipeline – Install new 20” AWSS pipe from University Mound Reservoir to the existing 20” AWSS pipe on Third Street in the vicinity of Jamestown Avenue. Planning completion 3/2017.

Construction

1. Candlestick Point Pipeline on Carroll Avenue – Install new 20” AWSS pipe on Carroll Avenue from Ingalls Street to Hawes Street. Construction contracted by City Distribution Division with completion date to be determined.
2. Cisterns – See following table.
3. Columbus/Green Pipeline – Replace AWSS pipe in the intersection of Columbus Avenue and Green Street as part of Public Works’ Columbus Avenue Pavement Renovation and Water Main Replacement, Contract 2267J(R). AWSS substantial completion 4/2017.
4. Control System – Improve the AWSS control and telecommunications systems. Hardware and software improvements are being implemented. Final completion 12/2016.
5. Fillmore/Haight Pipeline – Replace AWSS pipe as part of Public Works’ Pavement Renovation, Sewer Replacement and Water Main Installation - Haight Street & Hayes Street, Contract 2264J. AWSS substantial completion 5/2017.
6. Pumping Station 1 – Install new diesel engines for seawater pumps. Final completion 12/2016.
7. Pumping Station 1 Tunnel – Install resilient inserts to improve Pumping Station 1 seawater tunnel seismic performance. Construction completion 2017.

Earthquake Safety and Emergency Response Bond Program

(ESER 2010 & 2014)

Cisterns

Cisterns E (WD-2746) and Cisterns F (WD-2747) construction continued. Twenty-one of the thirty planned cisterns are functional.

Contract	#	Location	Constructing	Substantially Complete	Contract Schedule
Cisterns E (WD-2746)	1	16th Ave., Vicente St.	✓		Substantial Completion November 2016
	2	17th Ave., Pacheco St.	✓		
	3	18th Ave., Moraga St.	✓		
	4	18th Ave., Santiago St.	✓		
	5	Laguna Honda Hospital	✓		
Cisterns F (WD-2747)	1	5th Ave., Cabrillo St.	✓		Substantial Completion May 2017
	2	6th Ave., California St.	✓		
	3	30th Ave., Lake St.	✓		
	4	Apollo St., Williams Ave.	✓		

Earthquake Safety and Emergency Response Bond Program (ESER 2010 & 2014)

Office of the Chief Medical Examiner (OCME) (ESER 2014)



Before



In Progress

Project Description: The \$65M project will relocate Office of the Chief Medical Examiner (OCME) to One Newhall Street in the India Basin Industrial Park. The new facility will house about 50 employees who are organized into the four units of the OCME: Field Investigations, Medical/Autopsy, Laboratory, and Administration.

One Newhall Street is an existing 28,000 gsf industrial warehouse which will be renovated to add a second floor within the existing footprint of the building resulting in a seismically safe 46,000 gsf facility.

Earthquake Safety and Emergency Response Bond Program

(ESER 2010 & 2014)

Project Background: The existing OCME is located at 850 Bryant also known as the Hall of Justice (HOJ). The HOJ is over 50 years old and seismically deficient. In the event of a major earthquake, this building is not expected to be operational. This project is part of a larger strategy to replace the Hall of Justice established in the City's 10-Year Capital Plan as the Justice Facilities Improvement Program (JFIP).

The OCME is accredited by the National Association of Medical Examiners (NAME). During the previous accreditation in 2008, the City was advised that the existing facility is undersized, has a number of deficiencies that are currently mitigated by operational protocols, and the facility should be replaced to assure continued accreditation.

Project Status:

KMD Architects has been providing CA phase services. All permits have been obtained. Sixty two IBs were issued for various clarifications and added scope.

Clark Construction started construction on November 17, 2017.

CMSS, Vanir/Saylor, JV, has been providing numerous services including, but not limited to, cost estimates' reconciliation, review of design and construction schedules, participation in OAC meetings, review and analysis of budget, drawings, FF&E list, etc.

LEED Gold is the mandatory goal for this project (minimum 60 points required to be awarded the Gold certification). Project was registered with USGBC on April 9, 2014. Updated LEED scorecard lists 64 points under "yes" and 4 points are under "maybe" category.

Local Hiring Report through 11/21/2016

- Total Work Hours – 30% requirement
- Actual – 29.31%
- Apprentice Work Hours – 50% requirement
- Actual – 26.48%

Both local hiring requirements are projected to be met or exceeded based on the implementation of the corrective actions listed below.

Corrective actions:

- Helix hired an ABU member to help meet their requirement.
- Conco is working with City Build to apply some of their local hire labor from the Salesforce project to OCME.
- Anning-Johnson is getting a waiver for the apprentice.
- Control Air hire two sheet metal workers.

Earthquake Safety and Emergency Response Bond Program

(ESER 2010 & 2014)

LBE Participation

- The LBE goal for the OCME Project is 20%
- LBE Commitment is 26.48%

Safety

- No injuries, recordables incidents, or first aids to date.

Photos

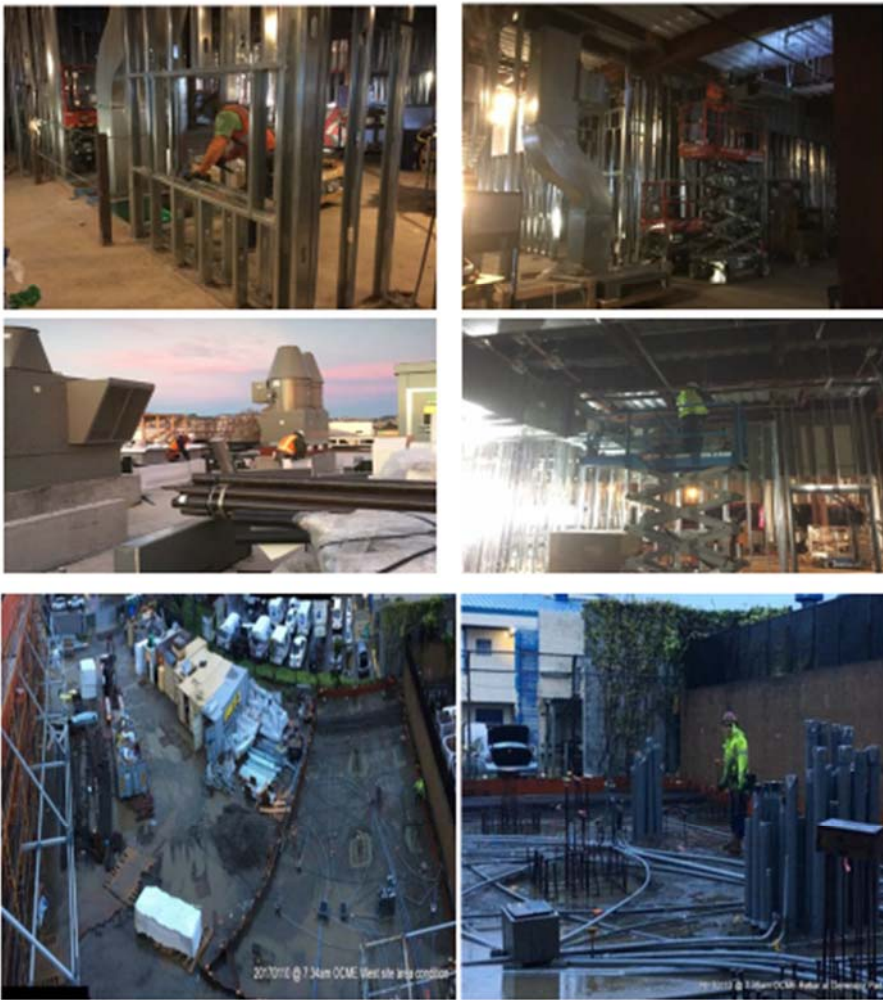


Earthquake Safety and Emergency Response Bond Program (ESER 2010 & 2014)

Office of the Chief Medical Examiner



Shower Room 253 exterior wall insulation and close-in.



West site area (left), Generator Pad rebar (right).

Traffic Company & Forensic Services Division (ESER 2014)

Project Description: The project will relocate the SFPD Forensic Services Division (FSD) and SFPD Traffic Company to a site located at 1995 Evans Avenue, Mission Bay, San Francisco. The amount of space requested for the Traffic Company was determined based on the Police Facilities Master Planning Study dated August 23, 2012.

The project is being developed to support 131 employees for 2020 FSD demand within 89,000 gsf and allows for a potential future expansion if required. The SFPD – TC will support 104 employees for 2020 demand within 20,000 gsf.

Project Background: The SFPD Traffic Company is currently located at the Hall of Justice (HOJ) at 850 Bryant Street. The SFPD FSD is currently located at two facilities. The FSD Administration, Crime Scene Investigations, and Identification units, with approximately 60 employees, are housed at HOJ. The FSD Crime Lab, with approximately 25 employees, is housed at Building 606 in the Hunters Point Shipyard.

The HOJ is over 50 years old and seismically deficient. In the event of a major earthquake, this building is not expected to be operational. This project is part of a larger strategy to replace the Hall of Justice, established in the City's 10-Year Capital Plan as the Justice Facilities Improvement Program (JFIP).

The Hunters Point Shipyard is being transferred from the U.S. Navy to the City. The City plans to develop the Shipyard as a residential area. The area in which Building 606 is located is planned to be public open space as an amenity for nearby residences. Prior to the transfer of the property, the Navy is obligated to remove and mitigate hazardous materials in the soil. To fulfill that obligation, the Navy may have to demolish Building 606. Due to the current macro-economic uncertainties, the schedule for completing the site clean-up and creating the open space in support of the housing development is uncertain, but may occur in 2020.

Project Status:

Concept Design phase is complete and the Schematic Design NTP was issued to HOK on 6/1/16. The first SD user meetings occurred on June 22 and 23 followed by a 25% Schematic Design package issued by HOK on June 29. The 25% SD effort was focused on the incorporation of a new program requirement called the Body Worn Camera (BWC) Unit. Two options were created to study the programmatic effect of adding the BWC Unit to the building. Option 1 makes concessions on other program spaces to add the BWC but maintains a budget neutral cost impact and Option 2 allows the building to increase in size and cost to add the BWC without the programmatic concessions made in Option 1. Both options will be presented to SFPD on July 12. Cost estimation exercises will continue into July to assess the cost impact of the BWC program addition.

Earthquake Safety and Emergency Response Bond Program

(ESER 2010 & 2014)

Escrow on the site acquisition closed in February 2015. Discussion of CalTrans parcel and adjacent rail line underway for use as surface parking lot.

Site survey work was completed in August 2015.

Schematic Design Documents were issued to the City by HOK on September 30, 2016 followed by HOK's cost estimate, performed by Cumming on October 17. PUBLIC WORKS estimator, Saylor, also delivered a cost estimate on October 17. Both estimates are tracking an over budget amount in the range of 10-15%. Several rounds of cost reduction have occurred resulting in a reduction to the over budget status, but not attaining complete scope to budget alignment. In addition, the Mayor's Office of Budget has sought Police cooperation to further substantiate the described growth in staffing to adequately provision the lab in 2020. This matter though exclusive of PUBLIC WORKS efforts, is relevant to the space planning and ultimate design of the project.

The RFP for the CM/GC will be issued when the FTE matter is resolved and the project is returned to budget; the 100% Schematic Design documents are to be updated to be issued with the RFP that will include bid to the design-build "Core Trade Subcontractors" consisting of mechanical, electrical, plumbing and curtain wall.

Police Facilities

Projects' Description:

The project includes various focused scope projects at 12 police facilities (9 district stations and 3 support facilities) across the City. The work scopes are derived from a series of onsite investigations, observations, and professional evaluations of different building systems that include mechanical, electrical, plumbing, fire protection, and structural safety. It also includes assessments of building envelope (i.e. integrity of roof, doors, windows, and walls), ADA accessibility requirements, as well as other site improvements that ensure safety and security.

Due to an urgent and immediate need that emerged in July 2016 for a new Firearms Simulator Training Facility, the client department requested a new building to be constructed at the Lake Merced Range for training purposes. A new project was created in response to the request. The new building was not part of the original scope of work and in order to fund for the development of the project, Public Works and the client department came to an agreement to re-budget the program and reduce the scope at Golden Gate Stables until further funding become available.

The project's overall budget is \$30M, the cost to address all building issues will likely exceed the budget, and therefore priorities are selected per recommendations by the Citywide Capital Plan. Those building deficiencies that potentially compromise the public's health and safety, and others that pertain to code compliance will get the first priority.

Projects' Status

ADA PACKAGE 1

The project addresses accessibility issues at the following stations: Bayview, Mission, Tenderloin, Central, and Northern.

Bayview Station: Construction completed.

Mission Station: Construction completed.

Central Station: Construction completed.

Tenderloin Station: Construction completed.

Northern Police Station: Construction was delayed due to material orders, as of 12/30/2016 the project is 90% complete, we anticipate completing construction by early January 2017.

Earthquake Safety and Emergency Response Bond Program (ESER 2010 & 2014)



Northern Police Station Entrance: Before and After



Northern Police Station Sidewalk: Before and After



Central Police Station ADA Ramps and Sidewalk: Before and After

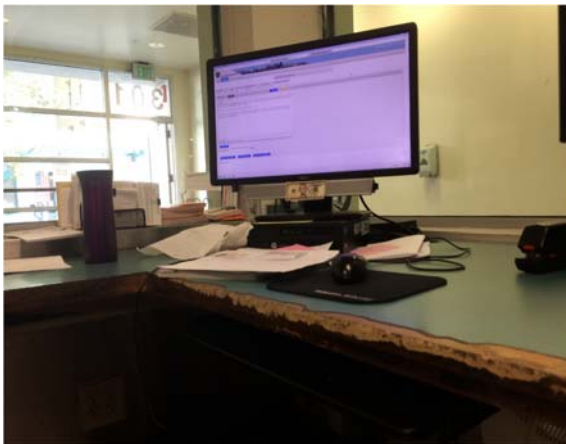
Earthquake Safety and Emergency Response Bond Program (ESER 2010 & 2014)



Central Police Station Main Entrance: Before and After



Tenderloin Police Station Public Lobby: Before and After



Tenderloin Police Station Office Area: Before and After

Earthquake Safety and Emergency Response Bond Program

(ESER 2010 & 2014)

ADA PACKAGE 2

Project was successfully awarded to Roebuck Construction who was the lowest bidder, for \$814,000. Notice to Proceed was issued on September 26, 2016. We had a partnering meeting on December 07, 2016, representatives from Public Works, SFPD, and the contractor attended. Preconstruction activities continued throughout October to December which includes submittal reviews, RFIs, and pre-con meetings. Actual construction will begin in January 2017 in the following sequence: Park Station, Richmond Station, Taraval Station, Ingleside Station, and Police Academy.

NORTHERN POLICE STATION RENOVATION PROJECT

Project completed Final Design in October 28, 2016, and construction cost provided by Saylor Consulting is \$2,254,479. Public Works advertised the project in November 2016 and a pre-bid conference and site walk was held at the site on 11/29/2016, Final bids are due in January 11, 2017.

MEP PACKAGE 1 – RICHMOND AND TARAVAL POLICE STATION

Project completed Final Design in November 09, 2016, and construction cost provided by Saylor Consulting is \$1,283,721. Public Works advertised the project in December 2016 and a pre-bid conference and site walks were held at the job site on December 15, 2016. Final bids are due in January 25, 2017.

NEW FIREARMS SIMULATOR TRAINING FACILITY

Project Scope: Demolish existing trailer on site and replace with new 30'x60' modular building to provide a simulator training center for SFPD to consist of one new classroom, simulator training room, operation / control room, and storage area.

Project Status:

Package #1: Demo existing trailer

Public Work's SAR team received approval from Department of Public Health to remove the existing trailer on site, the existing building is heavily infest in mold and has become uninhabitable in many years. SAR is in the process of hiring a demolition contractor, NTP will likely occur in January 2017.

Package #2: Modular Building

TEF is the architect of record for the development of the criteria documents for the modular building. Final design was submitted in December 2016; however some comments from 90% design remain unaddressed and new comments were identified, although remaining comments were minor they were returned back to the Architect. Final documents are expected to be complete in January 2017 and from there will begin the bidding process for the modular building.

Earthquake Safety and Emergency Response Bond Program

(ESER 2010 & 2014)

Package #3: Site and Utility Improvement

TEF is the architect of record for the development of the permit and bid documents for site and utility improvement. Final design was submitted in December 2016; however some comments from 90% design remain unaddressed, they were returned back to the architect. Final documents are expected to be complete in January 2017 and from there will begin the bidding process.

INGLESIDE POLICE STATION RENOVATION

Project Scope: Provide new air handler units to provide cooling in main building; remove and replace existing emergency generator and fuel tank with new generator capable of running 72 hours continuously; remove and replace damaged wood gutters; repair existing damaged / inoperable windows and doors; selective architectural and structural work to support main scope of work.

Project Status:

90% design was completed in December 2016 and submitted to DBI for permit application.

PARK POLICE STATION RENOVATION

Project Scope: Provide new air handler units to provide cooling in main building; remove and replace existing emergency generator and fuel tank with new generator capable of running 72 hours continuously; structural alteration to improvement building stability; repair existing damaged / inoperable windows and doors; selective architectural and structural work to support main scope of work.

Project Status:

90% design was completed in December 2016 and submitted to DBI for permit application.

Earthquake Safety and Emergency Response Bond Program

(ESER 2010 & 2014)

Budget, Funding and Expenditures ESER 2010

The budget for the ESER 2010 Bond Program is \$412,300,000. The following is a summary of the budget and appropriation per component:

Components/Projects	Budget	GENERAL OBLIGATION BONDS				% Expenditures/ Appropriation	% Expenditures/ Budget
		Appropriation	Expenditures	Encumbrance	Balance		
7410A Public Safety Building	236,661,976	236,661,978	231,810,069	618,294	4,233,615	98%	98%
Neighborhood Fire Stations (NFS)	64,000,000	66,906,318	32,499,355	10,099,341	24,307,623	49%	51%
Auxiliary Water Supply System (AWSS)	102,400,000	102,400,000	70,981,787	7,634,684	23,783,529	69%	69%
Oversight, Accountability & Cost of Issuance	6,900,000	4,003,304	3,219,252	494,530	289,522	80%	47%
Interest Earned		4,449,636	0	0	4,449,636	0%	-
Controller's Reserve	2,338,024	2,338,024	0	0	2,338,024	0%	0%
TOTAL	412,300,000	416,759,260	338,510,463	18,846,849	59,401,949	81%	82%

The budget and appropriation for PSB is \$236,661,976 of which all funding has been appropriated.

The budget for NFS is \$64,000,000 of which \$66,906,318 funding has been appropriated.

The budget revision will reflect that \$7,236,829 will accompany Station 35 and Pier 26 Berthing to ESER 2014.

The budget and appropriation for AWSS is \$102,400,000. of which all funding has been appropriated.

The budget for other costs such as the Controller's Audit Fund, Citizens General Obligation Bond Oversight Committee, Cost of Issuance and Underwriters' Discount is \$6,900,000. The appropriation of \$4,003,304 reflects the proceeds of the six bond sales.

Interest earned on the six bond sales totaled \$4,449,636.

The Accountability reports for the second thru sixth bond sales are available on the ESER website at <http://www.sfearthquakesafety.org/eser-2010-reports.html>.

Expenditures and Encumbrances

The ESER 2010 expenditures and encumbrances through December 31, 2016 are \$338,510,463 and \$18,846,849 respectively. The combined totals represent 81% of the appropriation of and 82% of the budget.

Earthquake Safety and Emergency Response Bond Program (ESER 2010 & 2014)

ESER 2014

The ESER 2014 budget is \$400,000,000. The total approved appropriation is \$210,200,402. The following is a summary of the budget and appropriation per component:

Components/Projects	Budget	GENERAL OBLIGATION BONDS				% Expenditures/ Appropriation	% Expenditures/ Budget
		Appropriation	Expenditures	Encumbrance	Balance		
9000A Office of the Chief Medical Examiner (OCME)	\$66,233,024	\$66,233,024	\$36,359,170	\$19,662,640	\$10,211,214	55%	55%
9100A Traffic Control & Forensic Services Division (TC/FSD)	\$162,195,000	\$46,703,201	\$22,073,747	\$2,342,072	\$22,287,381	47%	14%
Police Facilities (PF)	\$29,490,000	\$17,077,653	\$4,351,700	\$1,170,195	\$11,555,758	25%	15%
Neighborhood Fire Station (NFS)	\$81,216,979	\$23,793,507	\$8,546,766	\$587,634	\$14,659,106	36%	11%
Emergency Firefighting Water System (EFWS)	\$54,065,000	\$54,065,000	\$3,699,759	\$350,735	\$50,014,504	7%	7%
Component Subtotal	\$393,200,000	\$207,872,385	\$75,031,142	\$24,113,277	\$108,727,962	36%	19%
Oversight/Accountability & Cost of Issuance	\$6,800,000	\$2,328,016	\$1,776,242	\$588,374	(\$36,600)	76%	26%
TOTAL	\$400,000,000	\$210,200,402	\$76,807,384	\$24,701,651	\$108,691,362	37%	19%

The OCME budget is \$66,233,024 of which all funding has been appropriated.

The TCFSD budget is \$162,195,000 of which \$46,703,201 has been appropriated. Future bond sale(s) totaling \$115,491,799 would be needed to fully fund this component.

The Police Facilities budget is \$29,490,000 of which \$17,077,653 has been appropriated. Future bond sale(s) totaling \$12,412,347 would be needed to fully fund this component.

The NFS budget is \$81,216,979 of which \$23,793,507 has been appropriated. Future bond sale(s) totaling \$57,423,472 would be needed to fully fund this component. An additional \$1,500,000 from the general fund was appropriated to fund the construction of Station 48 at Treasure Island.

The Oversight, Accountability and Cost of Issuance budget is \$6,800,000 of which \$2,328,016 has been appropriated.

Expenditures and Encumbrances

Total expenditures and encumbrances through December 31, 2016 are \$76,807,384 and \$24,701,651 respectively. The combined totals represent 35% of the appropriation of and 19% of the budget. The expenditures of \$76,807,384 include \$8,148,460 in pre-bond expenditures. The expenditures funded by the General fund for Station 48 Treasure Island are \$1,479,474 a project under the NFS.

Earthquake Safety and Emergency Response Bond Program (ESER 2010 & 2014)

Attachment 1 – Contact Information



San Francisco Public Works | City and County of San Francisco | Building Design and Construction | Project Management

30 Van Ness Avenue, Suite 4100 | San Francisco, CA 94102 | (415) 557-4700 | sfpw.org

Contact	Title	Component	Telephone No.	Cell No.	E-mail
Charles Higuera	Program Manager	ESER 2010 & 2014	(415) 557-4646	(415) 307-7891	charles.higuera@sfdpw.org
Gabriella Judd-Cirelli	Project Manager	ESER 2010 & 2014 NFS	(415) 557-4707	(415) 279-4395	gabriella.cirelli@sfdpw.org
Samuel Chui	Project Manager	ESER 2010 PSB & ESER TC/FSD	(415) 558-4082	(415) 272-8293	samuel.chui@sfdpw.org
Magdalena Ryor	Project Manager	ESER 2014 OCME	(415) 557-4659	(415) 602-0930	magdalena.ryor@sfdpw.org
Lisa Zhuo	Project Manager	ESER 2014 PF	(415) 557-4699		lisa.zhuo@sfdpw.org
Michelle Lee	Project Mgr. Asst.	ESER 2010 & 2014 NFS Focused Scope	(415) 557-4718		michelle.lee@sfdpw.org
Jim Buker	Senior Architect		(415) 557-4758	(415) 225-9481	jim.buker@sfdpw.org
Sean O'Brien	Project Mgr. Asst.	ESER 2010 & 2014 NFS	(415) 557-4694		sean.obrien@sfdpw.org
Marisa Fernandez	Financial Analyst	ESER 2010 & 2014	(415) 557-4653		marisa.fernandez@sfdpw.org
Carlos Colón	Financial Analyst	ESER 2010 PSB & ESER 2014 TC/FSD, OCME	(415) 557-4655		carlos.colon@sfdpw.org
Kelly Griffin	Financial Analyst	ESER 2014 PF	(415) 557-4667		kelly.griffin@sfdpw.org
					
Public Utilities Commission					
525 Golden Gate Avenue, 9 th Floor San Francisco, CA 94102					
<i>Contact</i>					
David Myerson	Project Manager	ESER 2010 & ESER 2014	(415) 934-5710	(415) 500-5449	dmyerson@sflower.org