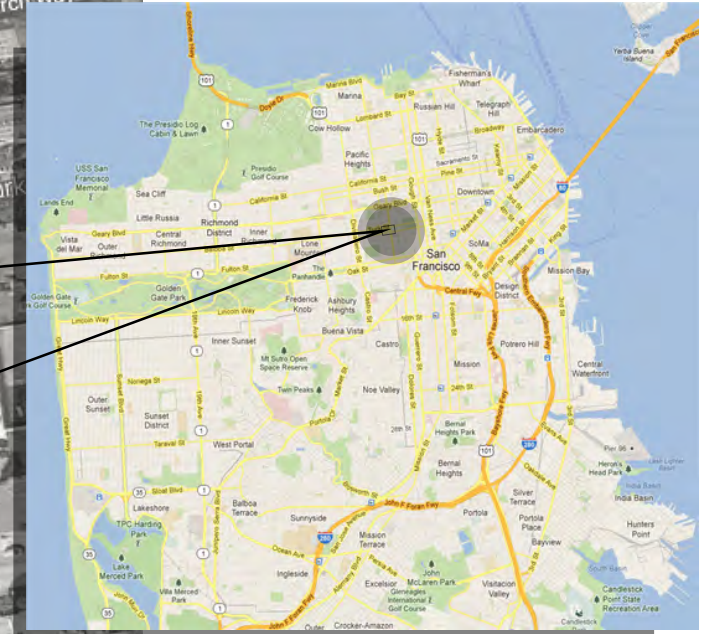
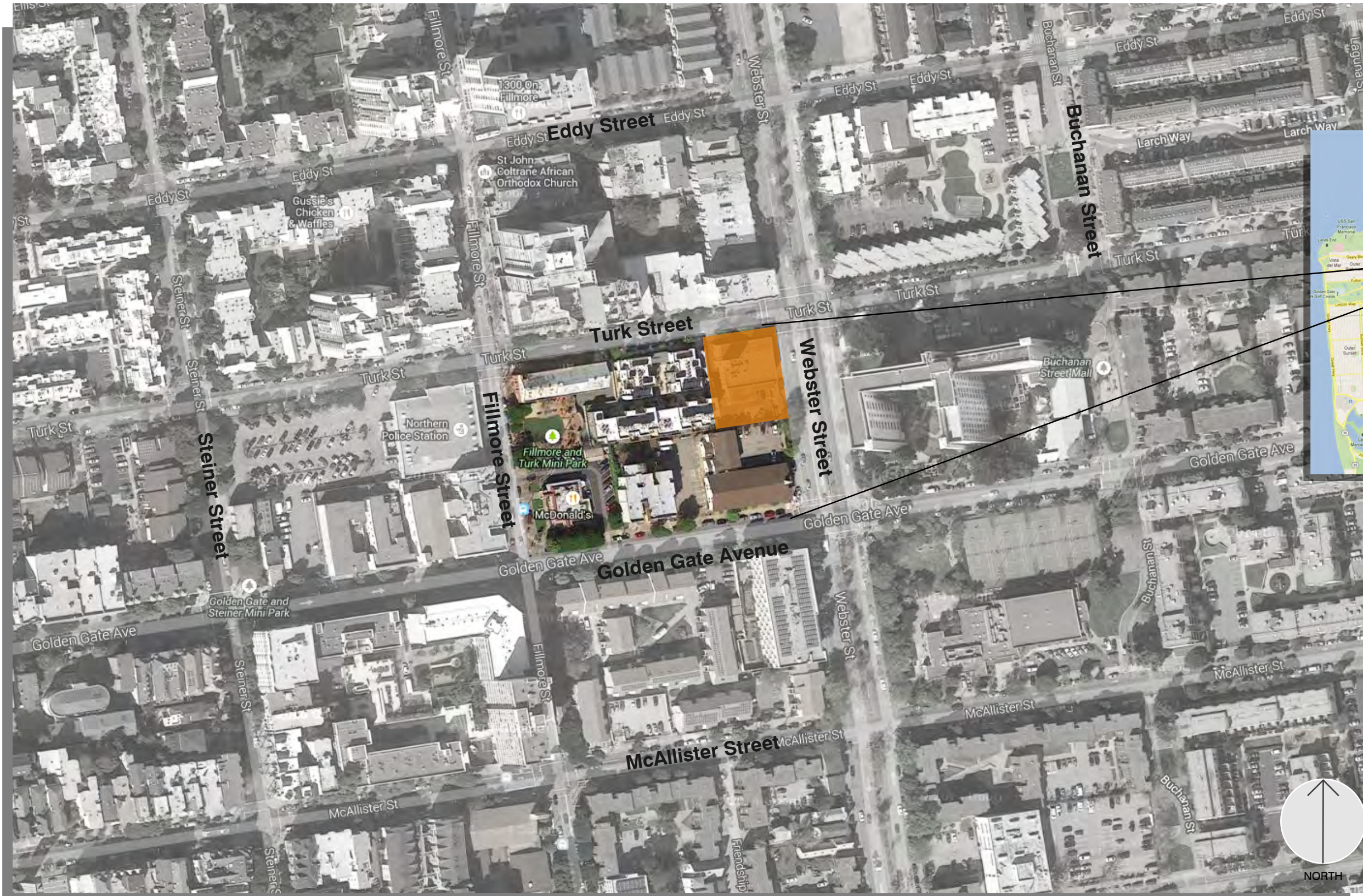


# SAN FRANCISCO FIRE DEPARTMENT | FIRE STATION 5

CIVIC DESIGN REVIEW PHASE II  
APRIL 20TH, 2015



# SITE MAP



**PROJECT LOCATION**  
**1301 TURK STREET**



# EXISTING VIEWS



WEBSTER STREET - SOUTH & EAST FACADES



CORNER OF TURK & WEBSTER STREET



TURK STREET - NORTH & WEST FACADES



WEBSTER STREET - EAST FACADE

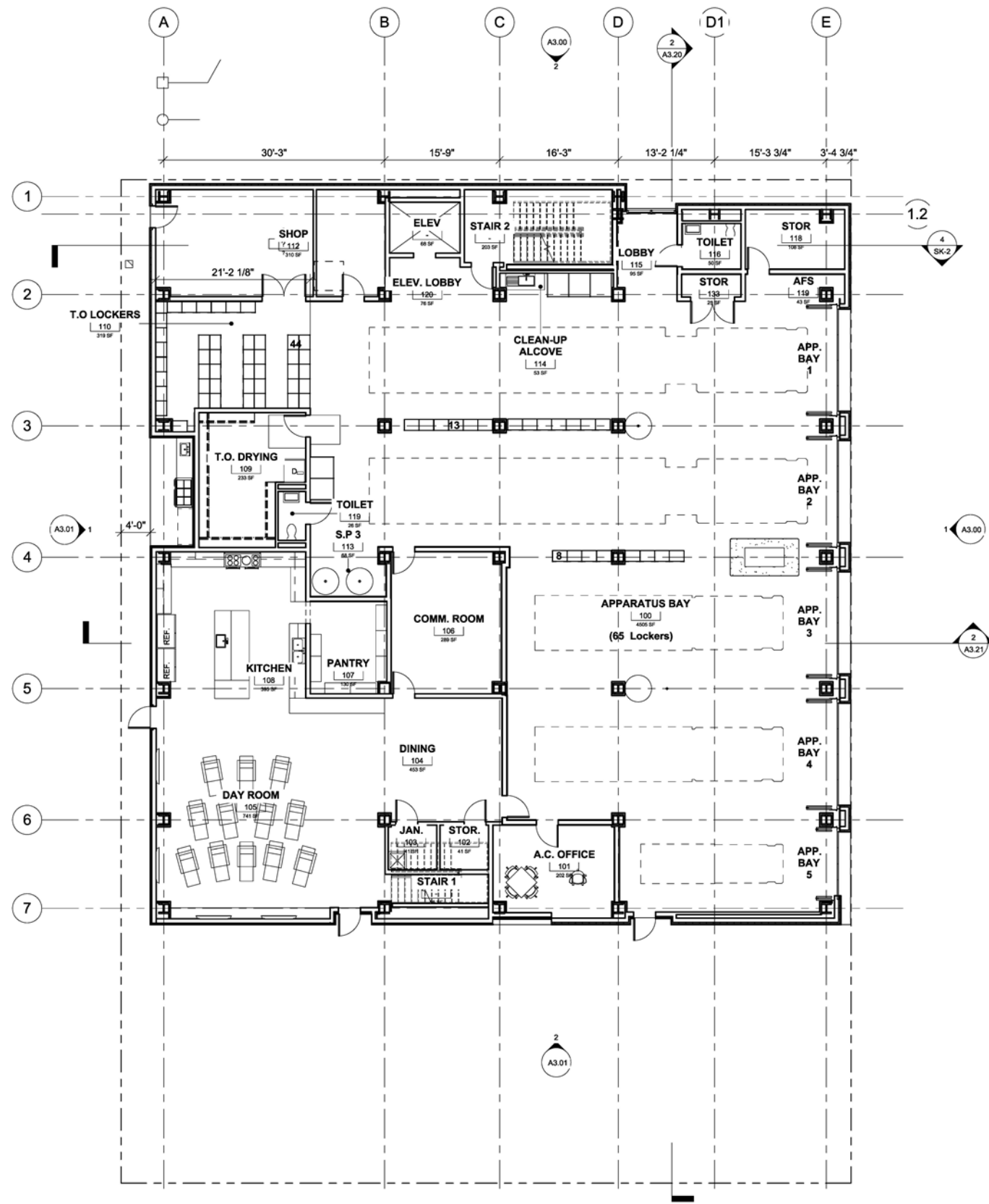


WEBSTER STREET - EAST FACADE

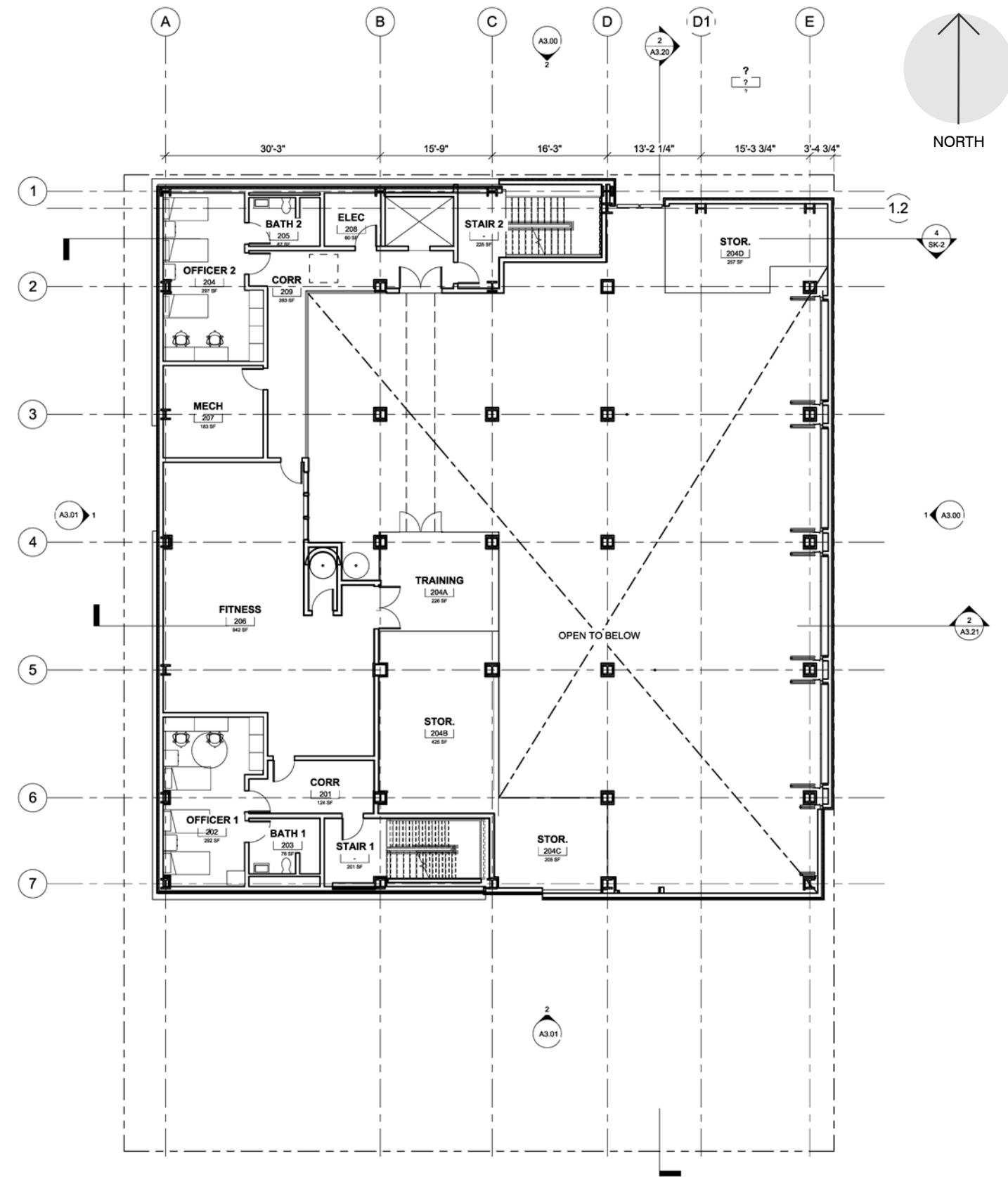


TURK STREET - NORTH FACADE



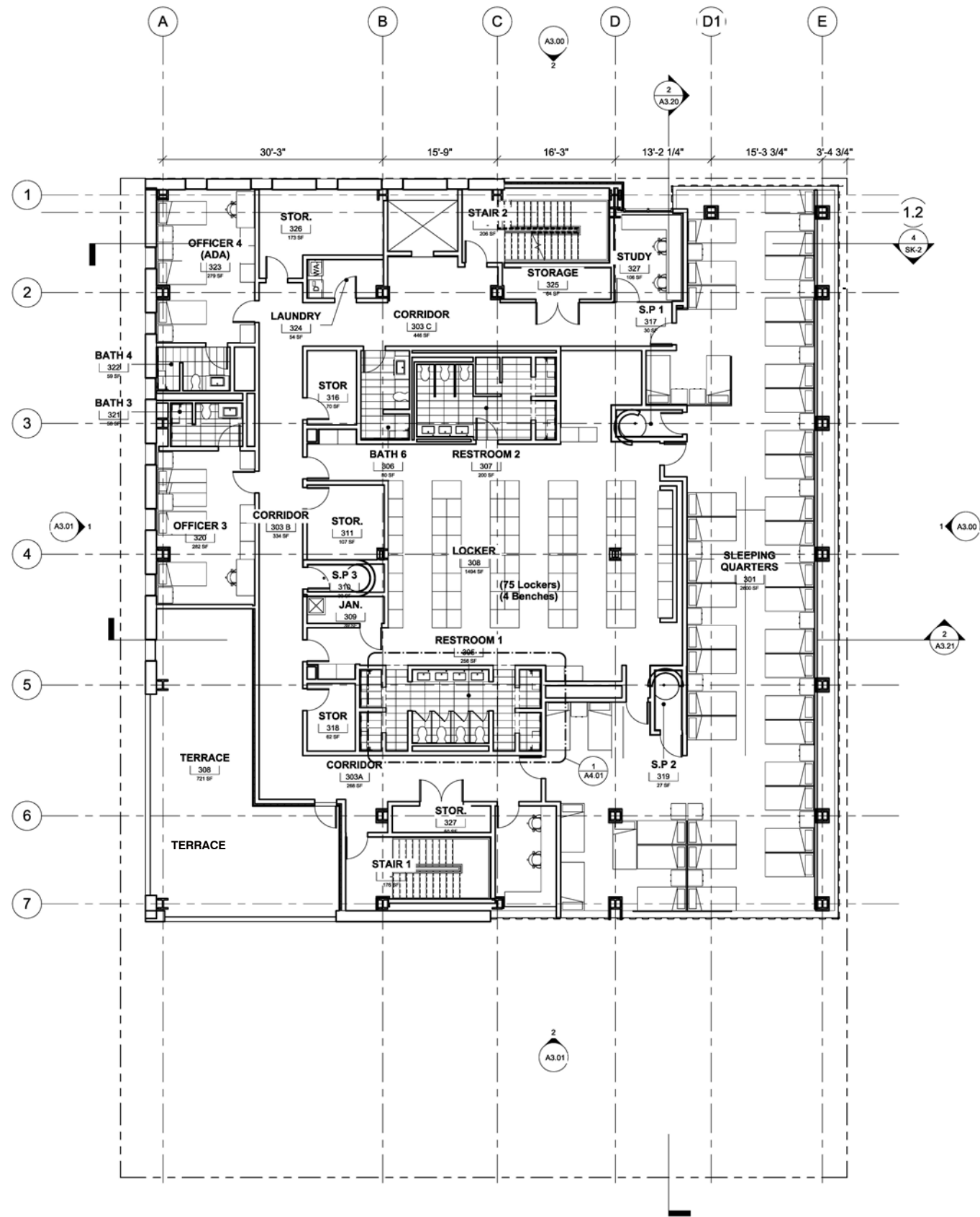


1 PLAN – FIRST FLOOR  
1/8" = 1'-0"

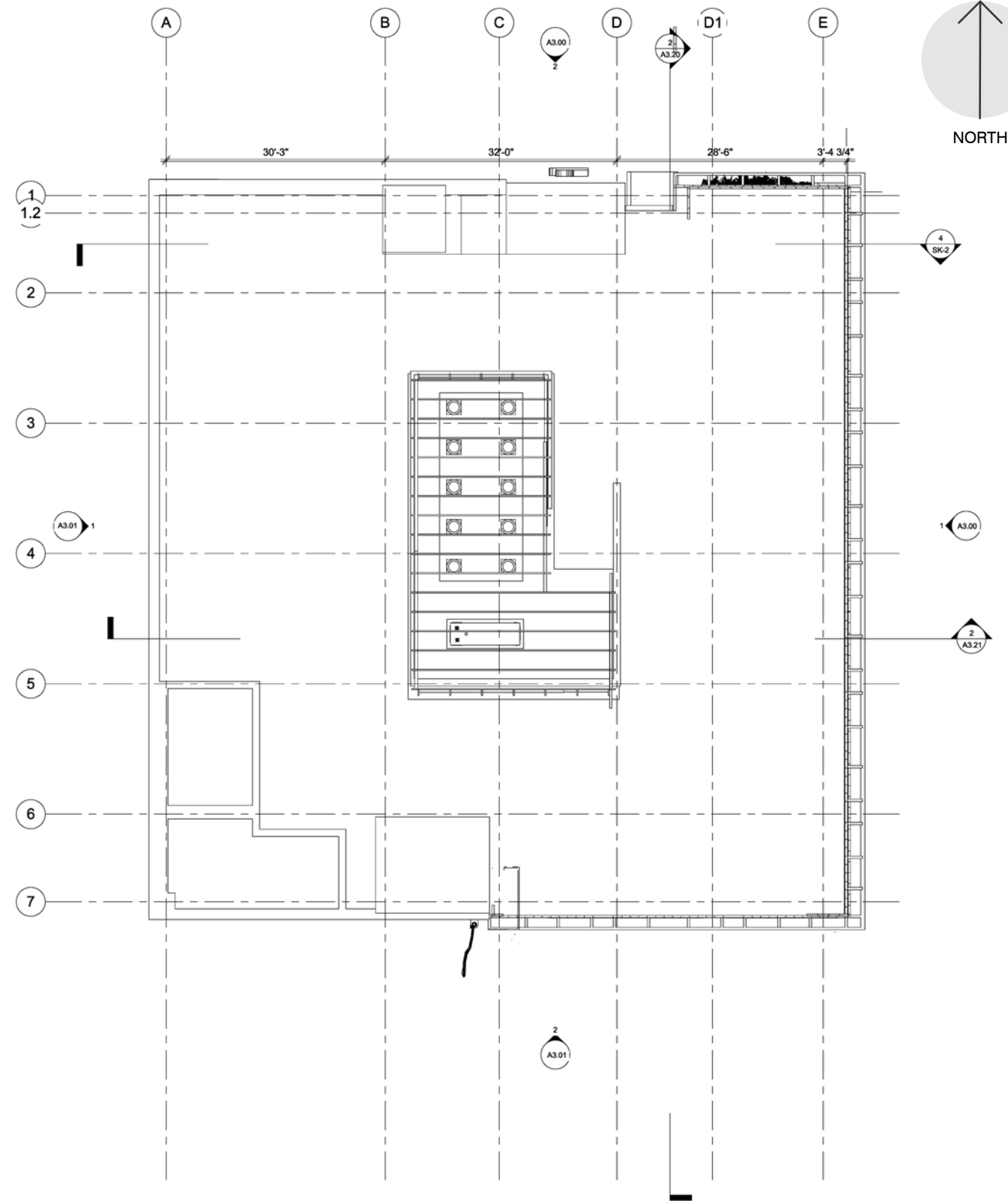


1 PLAN – MEZZANINE  
1/8" = 1'-0"

Design Development - Concept  
Floor Plans



① PLAN – SECOND FLOOR  
1/8" = 1'-0"



① PLAN – ROOF  
1/8" = 1'-0"

**Design Development - Concept  
Floor Plans**



WEBSTER & TURK

EAST ELEVATION - WEBSTER STREET



NORTH ELEVATION - TURK STREET





TURK STREET VIEW



SOUTH ELEVATION



WEST ELEVATION



WEBSTER STREET VIEW



TURK STREET VIEW



## COMMENTS AFTER PHASE I

- Too many materials/textures = too busy
- Study glass facade options - channel glass may not work
- Public entry planter not encouraged
- Grey interstitial space seems unnecessary

## CHANGES AFTER PHASE I

- Square footage decreased - as a result the terrace enlarged
- Channel glass not working well with operable windows - changed to curtain wall
- Band of mezzanine windows/recess at APP bay eliminated - constructibility issues
- Officer's quarters moved to 2nd level - quieter and more private
- Fitness moved to terrace level
- Met with SFAC VAC committee about trees and public art location





WEBSTER & TURK



NORTH ELEVATION - TURK STREET



EAST ELEVATION - WEBSTER STREET





WEBSTER & TURK



NORTH ELEVATION - TURK STREET



EAST ELEVATION - WEBSTER STREET



NORTH ELEVATION - TURK STREET

## CHANGES AFTER PRE-PHASE II INFORMAL

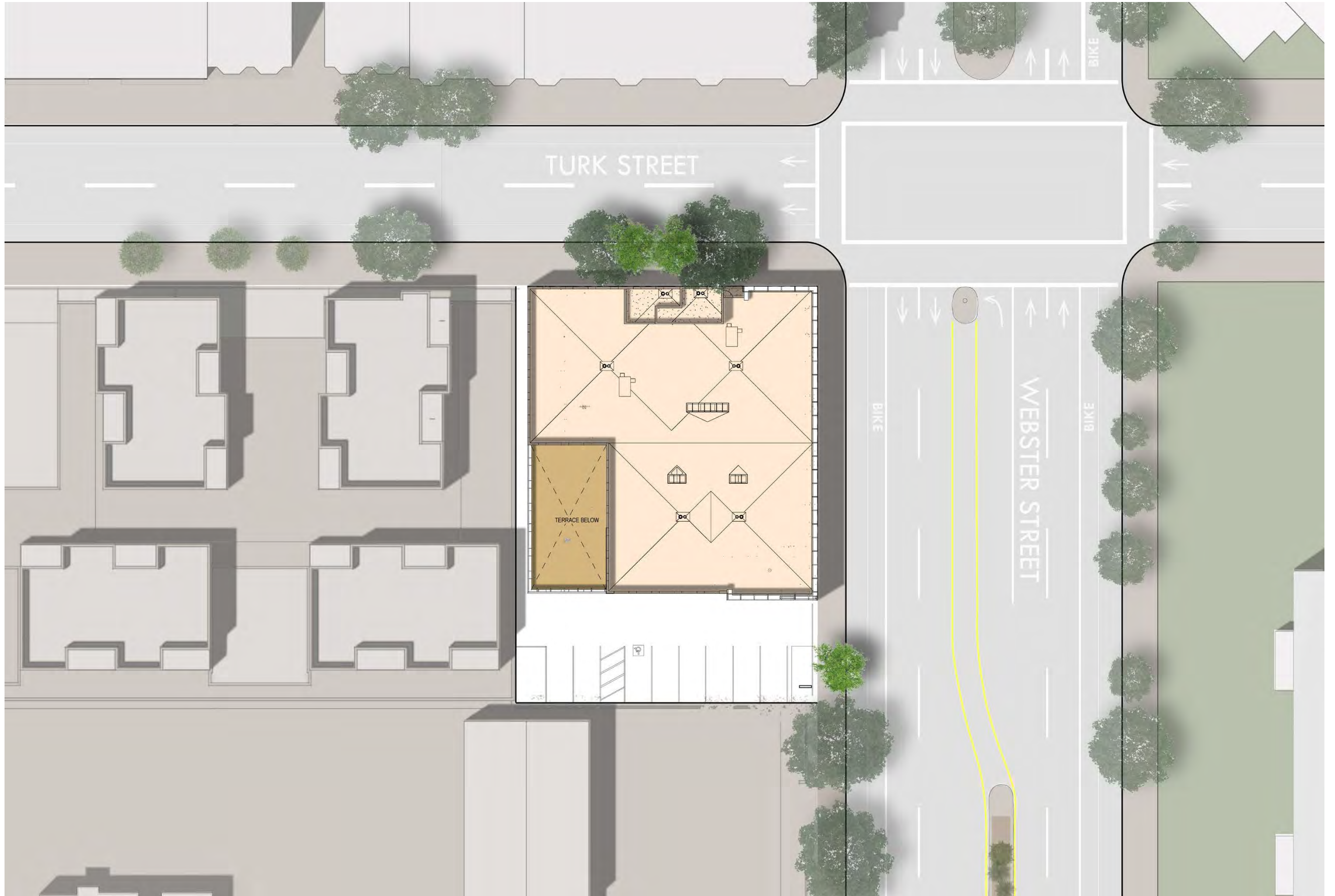
- Changed to curtain wall with horizontal mullions - works better with beds and contrasts vertical metal panels
- Need protective elements for training ladders
- Grey metal panel at rear now acts as terrace parapet
- Simplified color scheme with interlocking materials at mezzanine
- Considering tan tile as alternate to grey

## COMMENTS AFTER PRE-PHASE II INFORMAL

- Carefully study scale of porcelain tile
- Agreed simpler better curtain wall is better choice
- Minimal landscape on this project seems fine
- Preferred tan porcelain tile to grey
- Bring color options to CDR phase II presentation for comment



# SITE PLAN

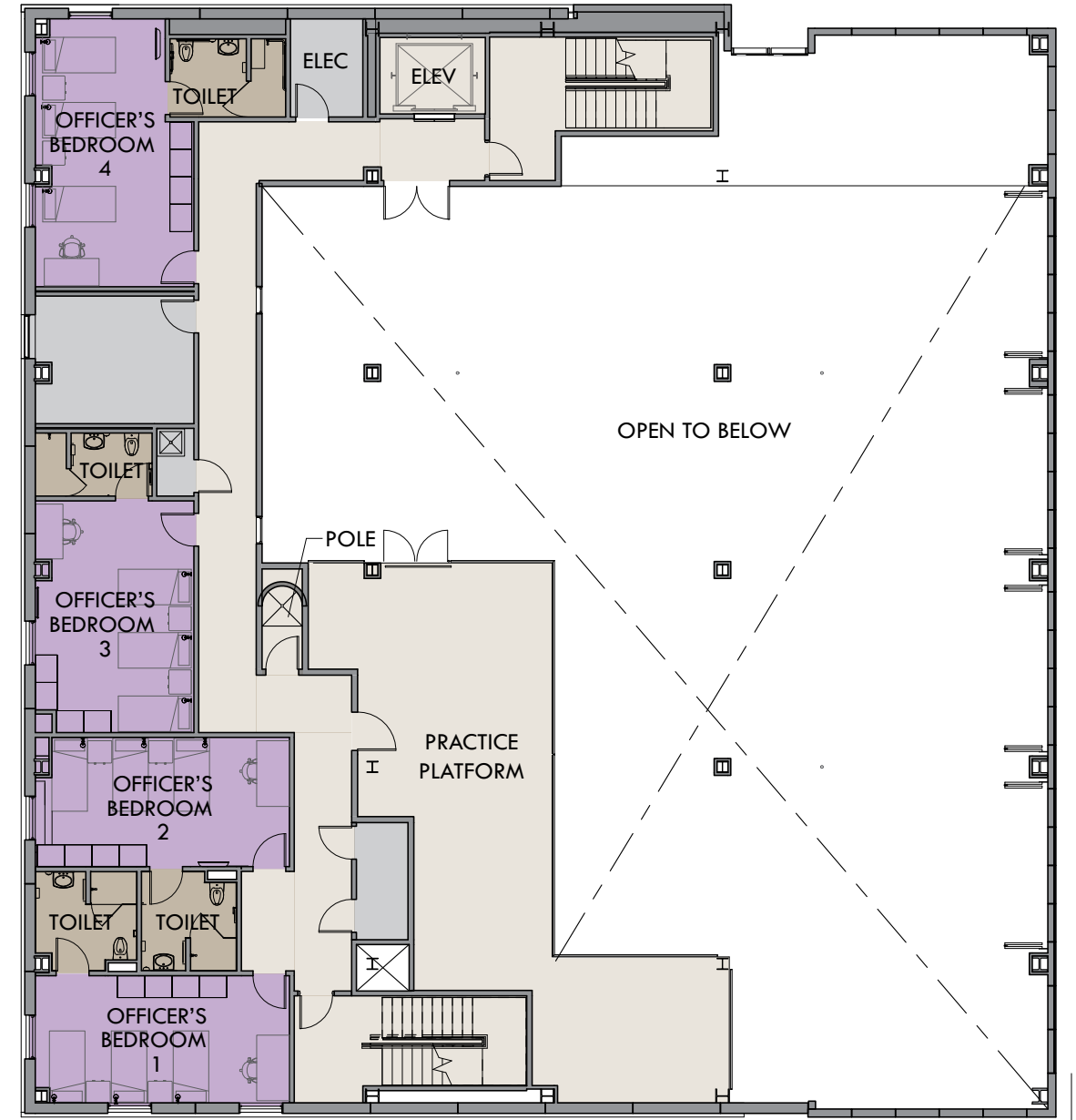


# FLOOR PLANS



1ST FLOOR

WEBSTER



2ND FLOOR

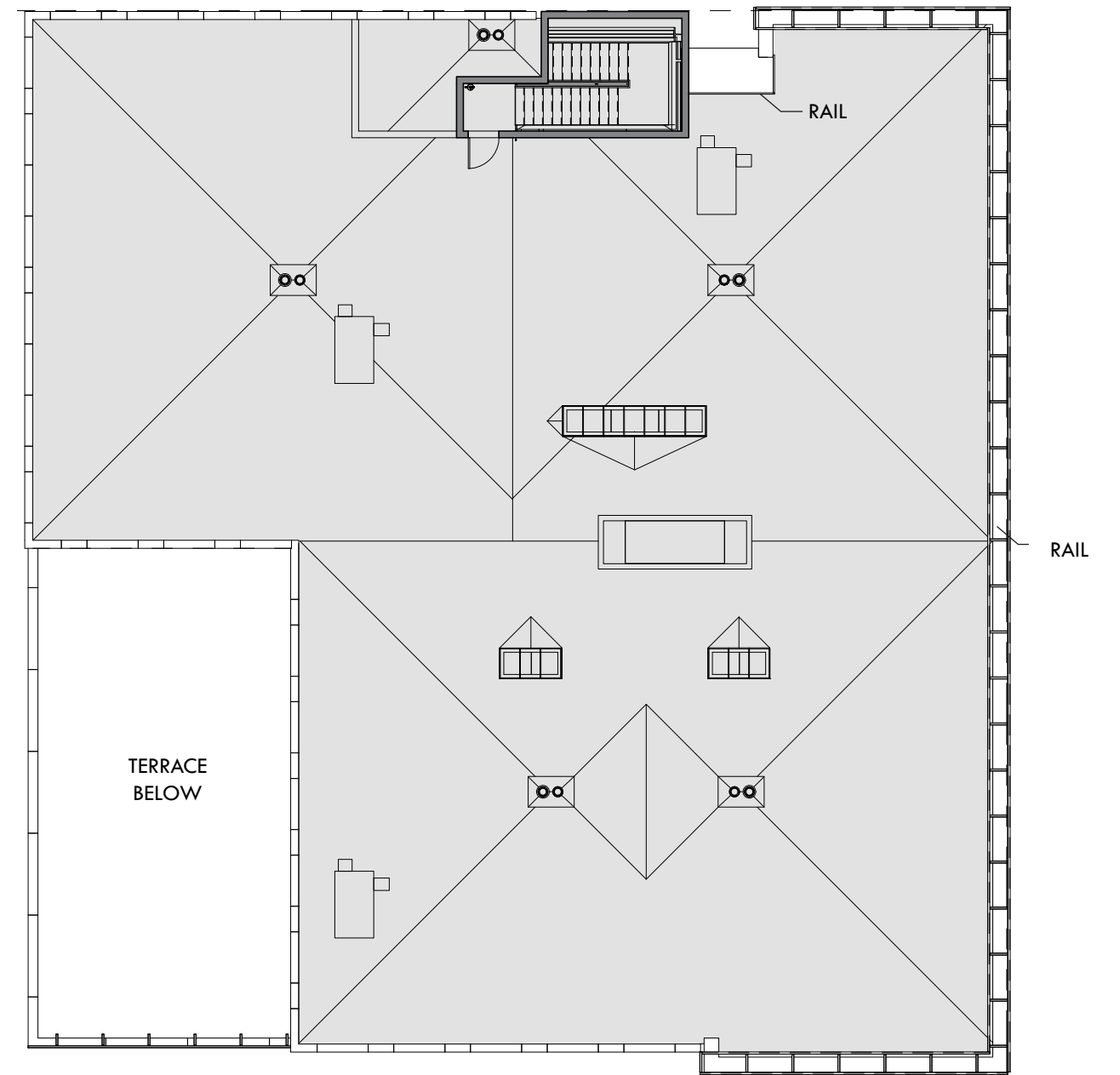
SCALE: 1/32" = 1'-0"



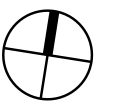
# FLOOR PLANS



3RD FLOOR



ROOF

SCALE: 1/32" = 1'-0" 

# ELEVATIONS



**NORTH ELEVATION**



**EAST ELEVATION**



# ELEVATIONS



**SOUTH ELEVATION**



**WEST ELEVATION**

**VIEW AT WEBSTER ST - TILE OPTION A**



VIEW DOWN TURK ST - TILE OPTION A



**VIEW AT WEBSTER ST - TILE OPTION B**



VIEW DOWN TURK ST - TILE OPTION B



**VIEW AT DUSK**



# VIEW WITHOUT TREES

