



San Francisco Safety Net Hospitals

2024 Healthy, Safe and Vibrant San Francisco Bond

The proposed 2024 Healthy, Safe and Vibrant San Francisco Bond will fund repairs and renovations at the City’s two safety net hospitals – Zuckerberg San Francisco General, the City’s only Level 1 Trauma Center, and Laguna Honda Hospital and Rehabilitation Center. These improvements are needed to ensure the hospitals can remain operational, effective, and in regulatory compliance to continue to provide essential health care to San Francisco’s diverse communities. Improvements will help provide quality patient experiences, improve and expand access to behavioral and mental health care, and make seismic upgrades.

Benefits of the Bond:

- Invest in hospital infrastructure to be in compliance with regulatory requirements to remain open to the public.
- Seismically retrofit Building 3 at ZSFG to provide ZSFG with 65,000 additional square feet of seismically safe space on campus for ZSFG programs.
- Expand Psychiatric Emergency Services at ZSFG to meet the current demands for psychiatric care.
- Upgrade the clinical laboratory at ZSFG to ensure its continued efficient operation.
- Ensure Laguna Honda completes projects are directly tied to federal regulatory operating requirements. Projects include enhancements that will have a direct and meaningful impact to the quality of care for our residents.

99,033
patients served at ZSFG

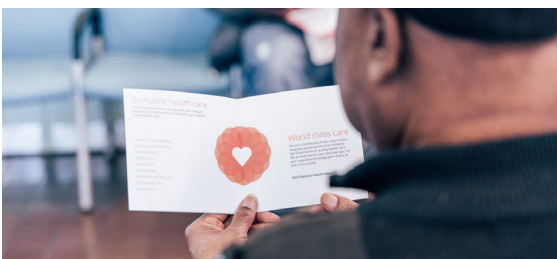
64,149
medical & psychiatric
emergency visits at ZSFG

150+
years of serving San Franciscans
at Laguna Honda

99%
of resident care at Laguna Honda
funded by Medi-Cal and Medicare

Bond Scope – \$390 Million

Public Health Infrastructure	\$205,100,000
Supportive Shelter	\$50,000,000
Street Safety Improvements	\$63,900,000
Public Spaces	\$71,000,000



**San Francisco
Department of Public Health**

*Data as of FY22-23



Zuckerberg San Francisco General Hospital has a 150-year history of providing critical care to San Francisco patients. ZSFG provides a full complement of inpatient, outpatient, emergency, skilled nursing, diagnostic, mental health and rehabilitation services for adults and children. It is the only acute inpatient hospital for psychiatric patients in the City. Additionally, it is the only acute hospital in San Francisco that provides 24-hour psychiatric emergency services and the only Level 1 trauma center serving San Francisco and northern San Mateo County, seeing more than 2,400 trauma activations in 2023.



Laguna Honda Hospital and Rehabilitation Center is a general acute care hospital providing acute medical and rehabilitation services as well as skilled nursing services. For more than 150 years, Laguna Honda Hospital has been a pillar of San Francisco's safety net health care system, serving residents with complex medical needs who are low or very low income and often have no other options for care. Many residents have complicated chronic medical needs along with behavioral health diagnoses (such as mental illnesses and/or substance use disorders) and other social or behavior issues.



The bond will not increase property tax rates. The bond will have accountability standards including transparency through independent annual reviews, audits and reports to the Citizens General Obligation Oversight Committee.

