

TRANSBAY - BLOCK 3 PARK

Community Meeting 2 | September 9, 2020

The Webinar Presentation will start momentarily. Please wait!

TONIGHT'S PROGRAM

TIME:

INTRODUCTION: OCII

- PROJECT & TEAM BACKGROUND
- POLL

5 MINUTES

PRESENTATION: DESIGN TEAM

- I - OVERVIEW OF COMMUNITY MEETING #1 FEEDBACK
- II - PARK PROGRAM & ANALYSIS
- III - PARK DESIGN ALTERNATIVES

25 MINUTES

FEEDBACK: COMMUNITY

- PUBLIC COMMENT - Q&A
- ONLINE FEEDBACK SURVEY

30 MINUTES

NEXT STEPS

- PROJECT SCHEDULE

WELCOME & THANK YOU FOR ATTENDING! YOUR INPUT IS INVALUABLE

PROJECT TEAM:

- **OFFICE OF COMMUNITY INVESTMENT & INFRASTRUCTURE (OCII)**

BENJAMIN BRANDIN - DEVELOPMENT SPECIALIST

SALLY OERTH - DEPUTY DIRECTOR, PROJECTS & PROGRAMS

- **SAN FRANCISCO RECREATION AND PARKS**

STACY BRADLEY - DEPUTY DIRECTOR OF PLANNING

Yael GOLAN - PLANNER

ERIC ANDERSEN - SUPERINTENDENT OF PARKS AND OPEN SPACE

- **SAN FRANCISCO PUBLIC WORKS**

KATHLEEN O'DAY - PROJECT MANAGER

LIZZY HIRSCH - PROJECT LEAD FOR DESIGN TEAM

BRETT DESMARAIS - DESIGN

LAWRENCE CUEVAS - DESIGN

VERONICA CHAN - DESIGN

WINNIE CHANG - DESIGN

VIRTUAL MEETING FEEDBACK OVERVIEW

HOW TO PROVIDE FEEDBACK:

- PLEASE ENTER ALL QUESTIONS, COMMENTS, OR FEEDBACK INTO THE **Q&A** AT ANY POINT DURING THE PRESENTATION
- QUESTIONS WILL BE READ AND ANSWERED ALOUD DURING THE **Q&A** PERIOD FOLLOWING THE PRESENTATION
- A SUMMARY OF THE **Q&A**, INCLUDING ANY OUTSTANDING QUESTIONS THAT WERE NOT ANSWERED DURING THE MEETING, WILL BE POSTED TO THE PROJECT WEBSITE FOLLOWING THIS MEETING
- AGREE TO BE OPEN MINDED, LISTEN TO EACH OTHER'S IDEAS, COMMUNICATE WITH RESPECT

NOTE: THIS IS A WEBINAR FORMAT AND ONLY PANELISTS AND MODERATORS WILL BE SEEN OR HEARD. ADDITIONALLY, IT IS BEING RECORDED FOR PUBLIC DISTRIBUTION.

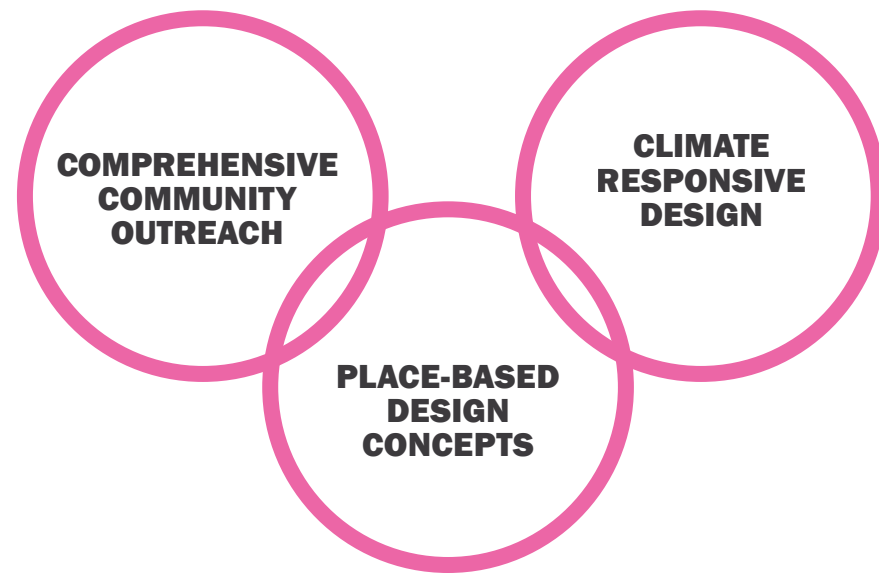
POST-MEETING SURVEY LINK:

<https://www.surveymonkey.com/r/TransbayBlock3-CM2>

POLL

- DID YOU ATTEND TRANSBAY BLOCK 3 PARK COMMUNITY MEETING #1 IN MARCH?
- DO YOU LIVE OR WORK IN EASY WALKING DISTANCE TO THE PROPOSED NEW TRANSBAY BLOCK 3 PARK (WITHIN 1 MILE APPROX)?

DESIGN DEVELOPMENT PROCESS



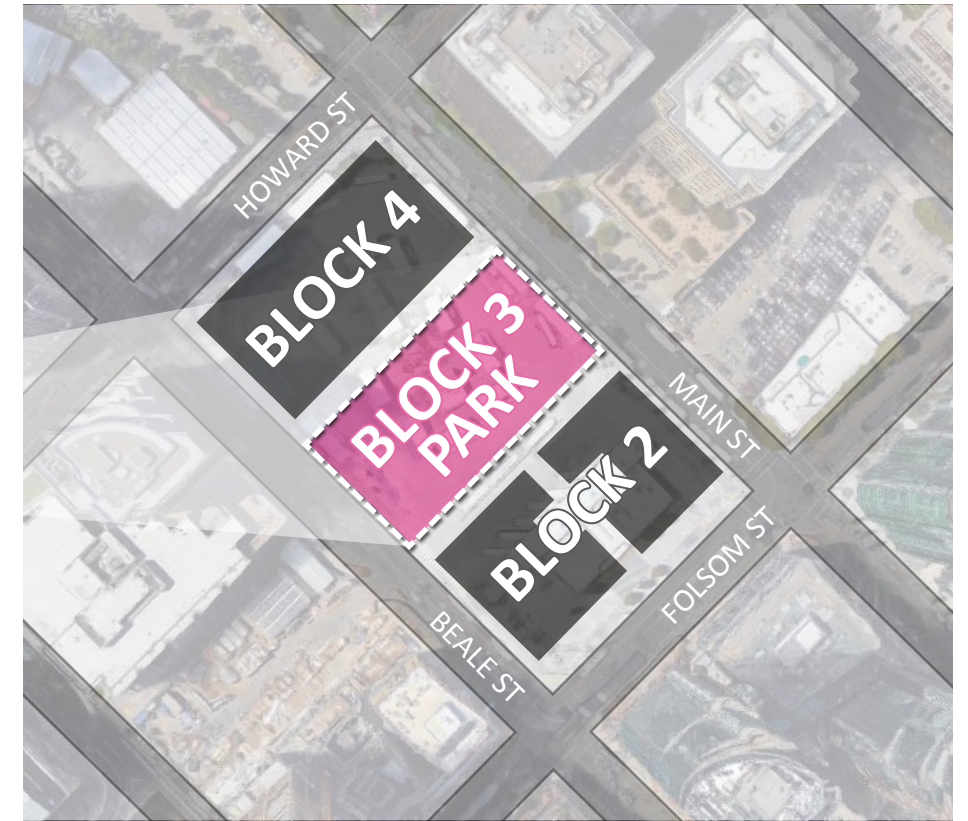
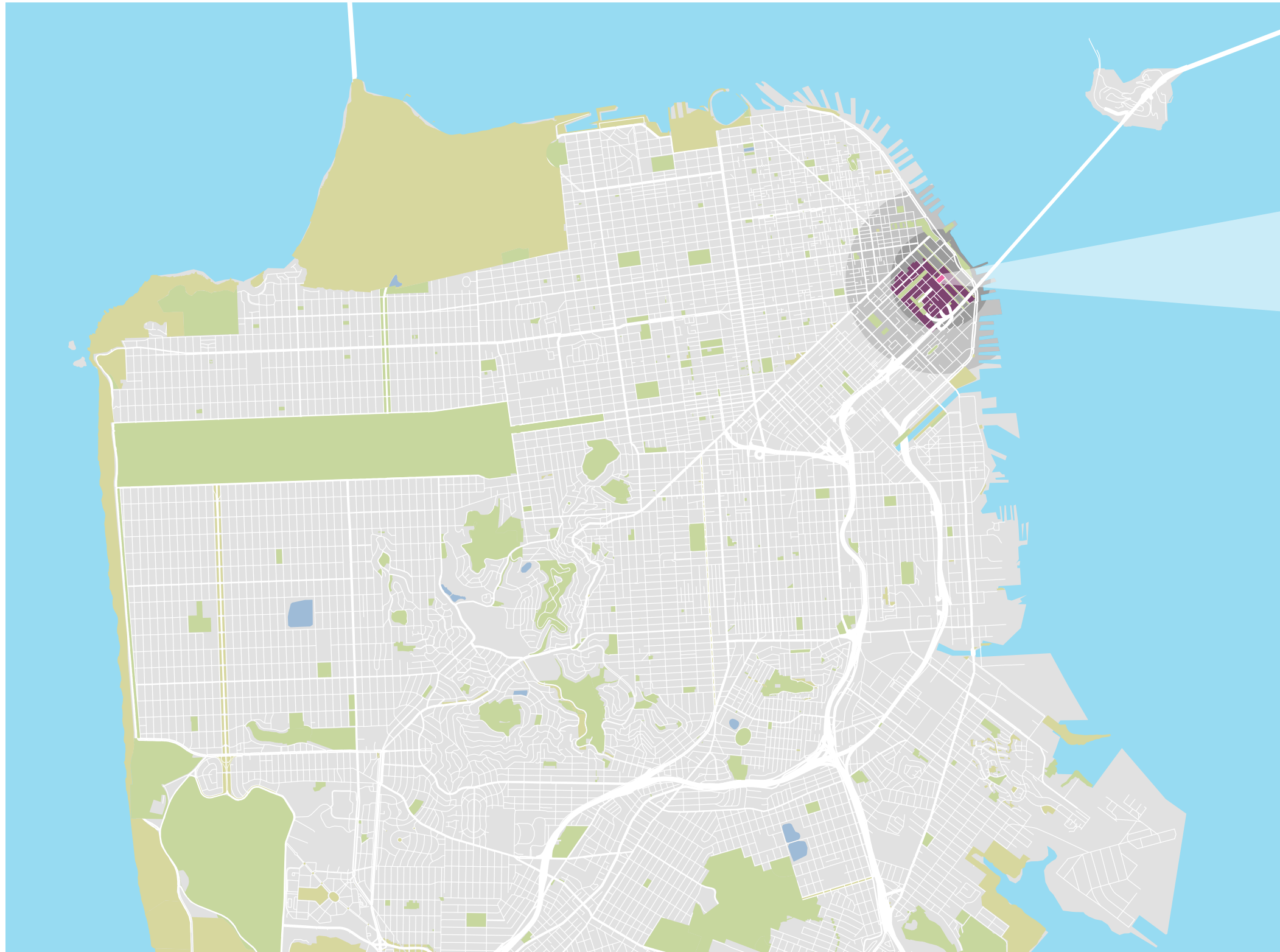
DESIGN PROCESS



COMMUNITY INPUT SCHEDULE

PART I - OVERVIEW

SITE: CONTEXTUAL FRAMEWORK



EXISTING SITE:



MAIN ST LOOKING NORTHWEST



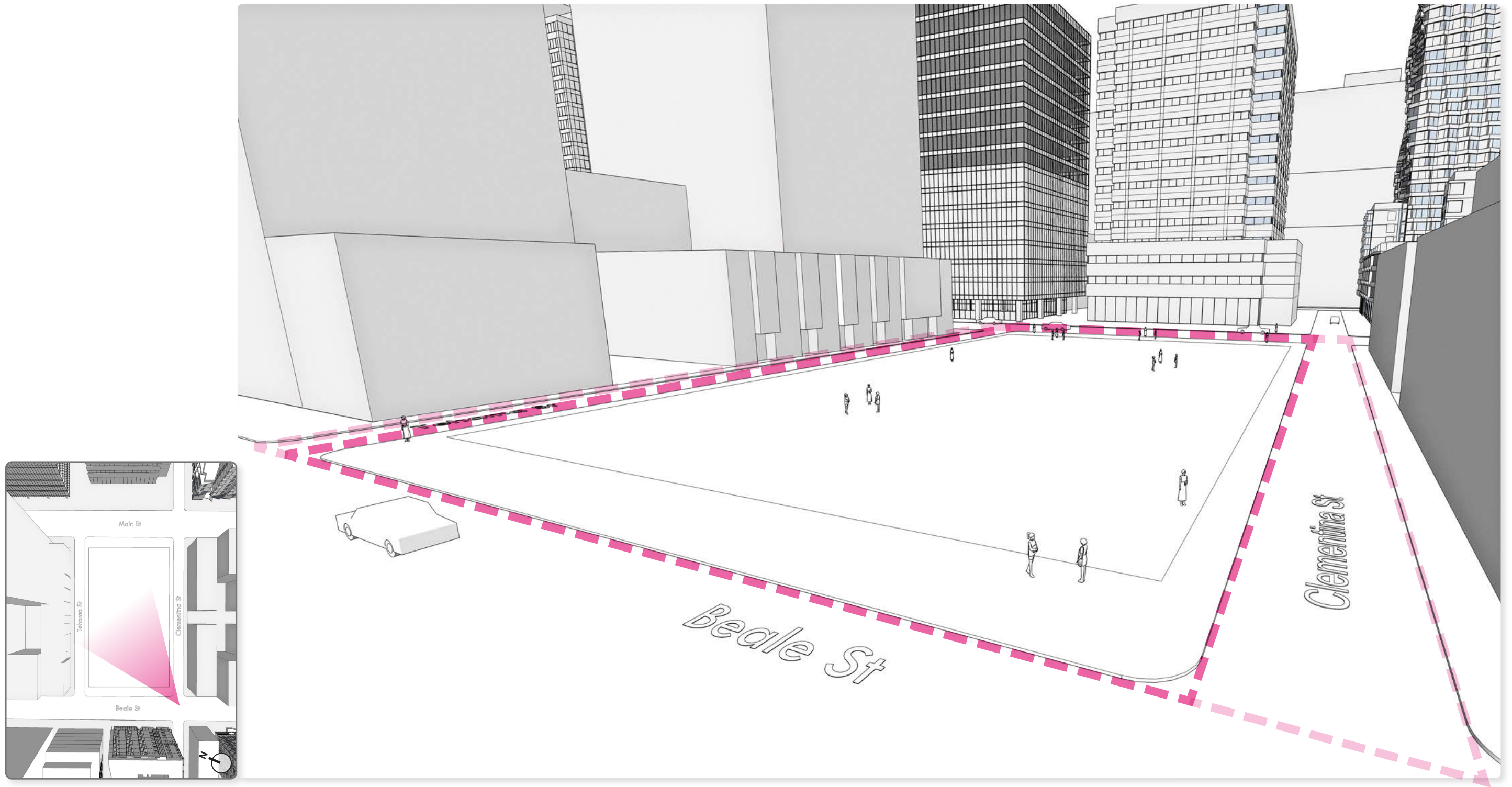
BEALE ST LOOKING NORTH



BEALE ST LOOKING NORTHEAST



WHAT DO YOU IMAGINE | COMMUNITY FEEDBACK



View From Beale & Clementina (future Block 3 development) looking north



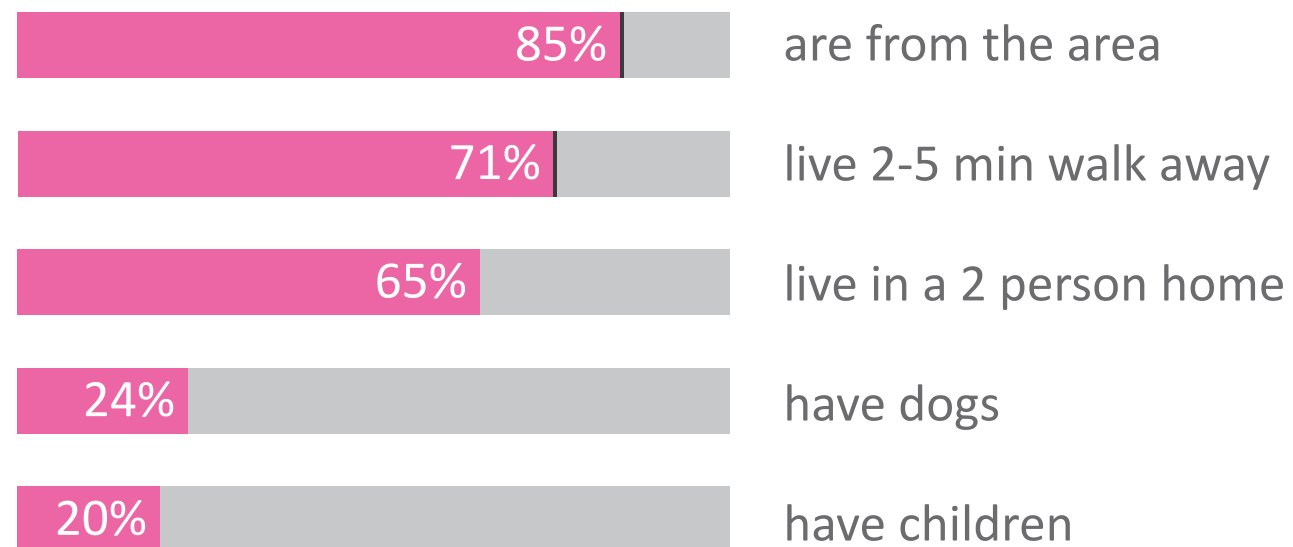
COMPOSITE SURVEY RESULTS POST COMMUNITY MEETING 1 - 03/04/2020

East Cut CBD Online Community Survey results amended with responses from those who had not taken initial survey

WHO?

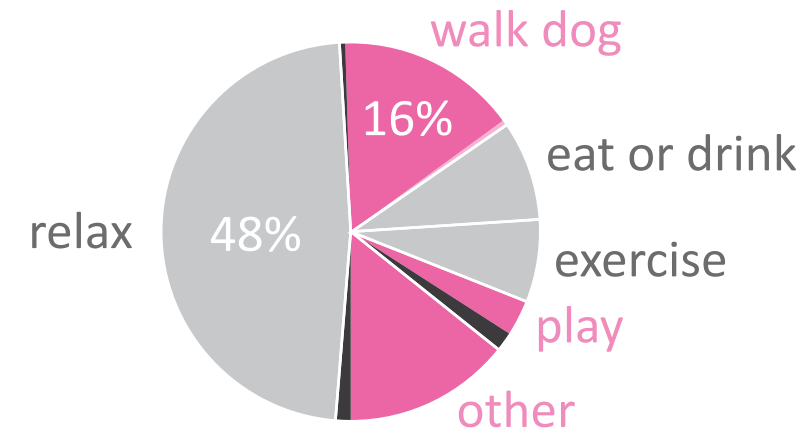
East Cut CBD Online Community Survey Results:
582 respondents

Community Meeting 1 Survey:
18 additional responses

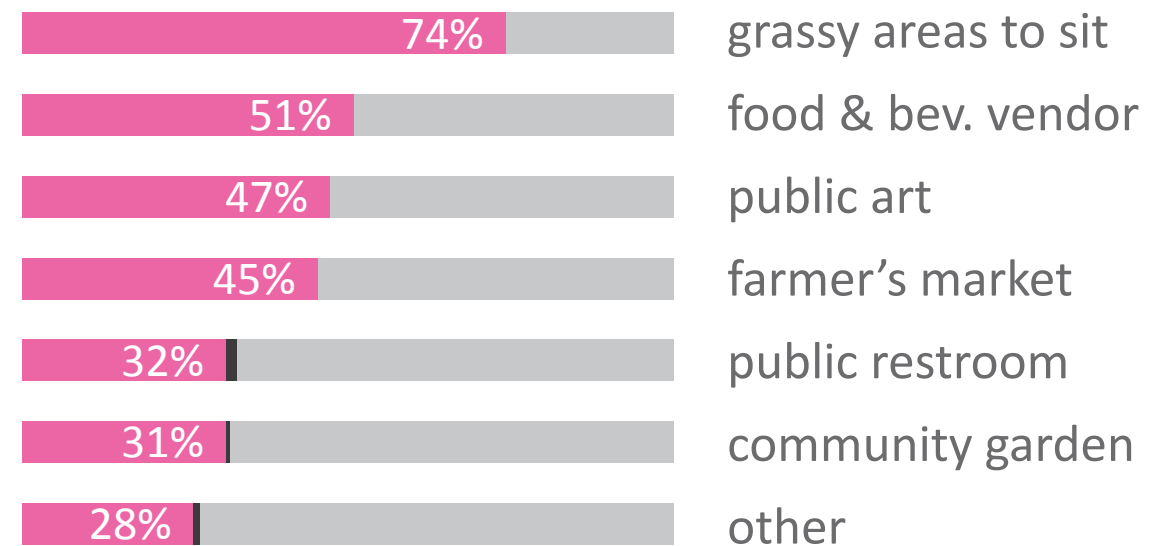


PARK WISHLIST

Park activity:



Desired amenities:



COMMUNITY MEETING 1 - DOT BOARD RESULTS

PARK CHARACTER

Yes	Mixed	No Thanks
 BRYANT PARK, NYC	 CITY GARDEN, ST. LOUIS	 PLAÇA DEL DUC DE MEDINACELI, BARCELONA
 BECKMAN ST. PLAZA, NYC	 ESPLANADE PAUL GRIMAUD, ANNECY, FR	
 PARADISE ART WONDERLAND, HEFEI, CN	 THE PARK, LAS VEGAS, NV	
	 UCSF MISSION BAY PLAZA, SF	

PARK SEATING

Yes	Mixed	No Thanks
 CITY GARDEN, ST. LOUIS	 UCSF MISSION BAY PLAZA, SF	 THE PARK, LAS VEGAS
 ESPLANADE PAUL GRIMAUD, ANNECY, FR	 SWING TIME, BOSTON	
 DREXEL, PHILADELPHIA	 JACK LONDON, OAKLAND	
	 TONGVA PARK, SANTA MONICA	

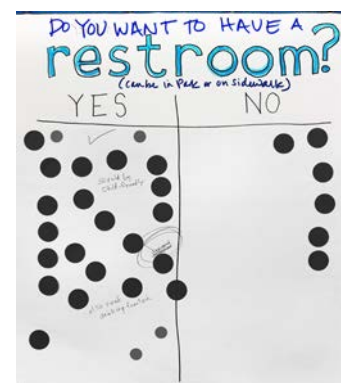
PLAY IN THE PARK

Yes	Mixed	No Thanks
 KNOLLS/HILLS PLAY	 SCULPTURAL PLAY FEATURE	 TIMBER PLAY
 NATURE PLAY	 LARGE STRUCTURE PLAY	
 TODDLER PLAY	 ADULT FITNESS	
 SCULPTURAL PLAY		

CULTURAL AMENITIES

Yes	Mixed
 BERLIN LIBRARY	 FARMERS' MARKETS
 COMMUNITY EVENTS	 LIVE MUSIC
 MOVIE NIGHTS	 COMMUNITY BULLETIN BOARD
 CITY GARDEN, ST. LOUIS	
 EXERCISE	

RESTROOM IN THE PARK?

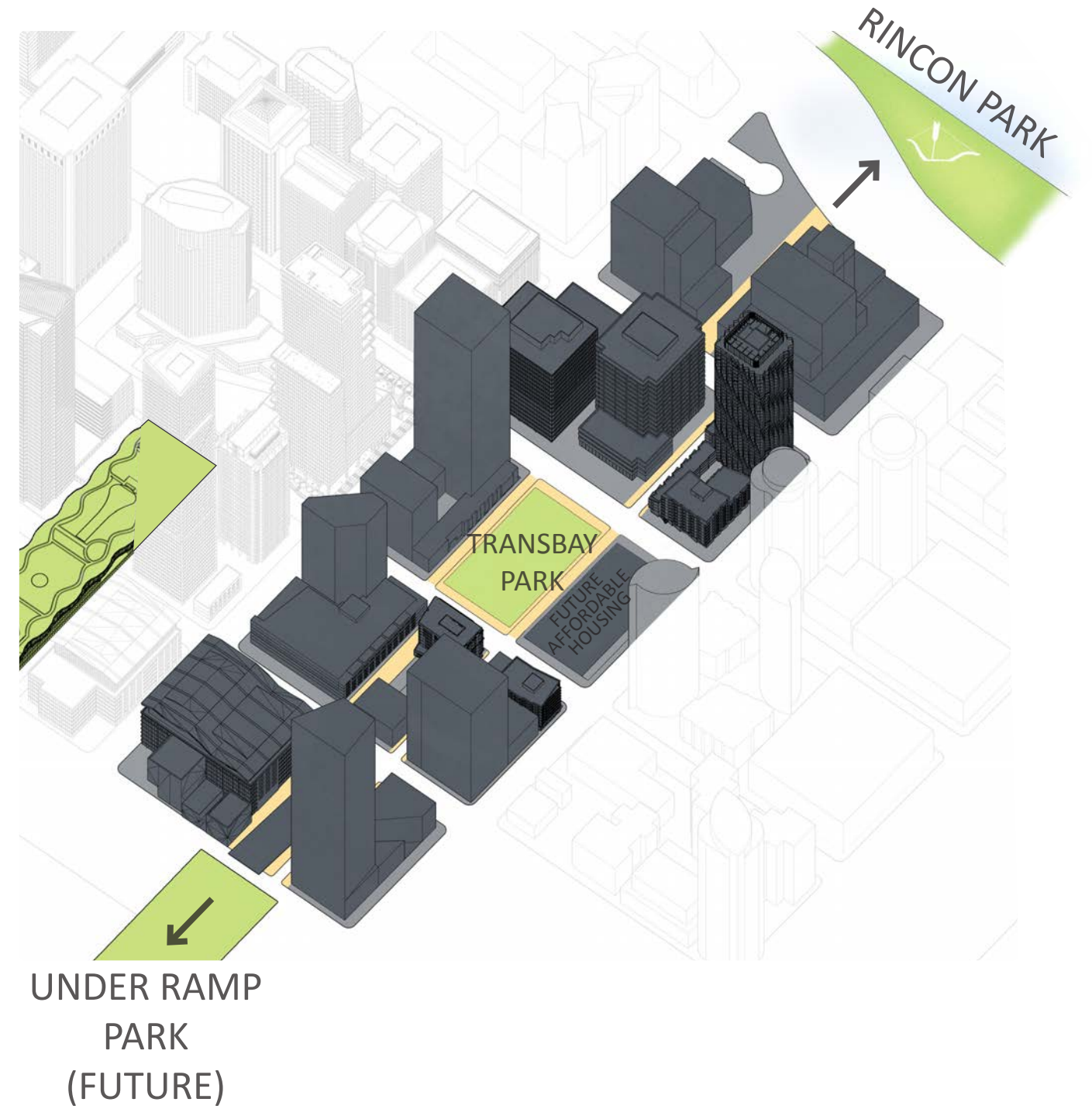


DOT LEGEND:

- LIKE
- DISLIKE

PART II - PARK PROGRAM & ANALYSIS

BLOCK 3 ADJACENT OPEN SPACE

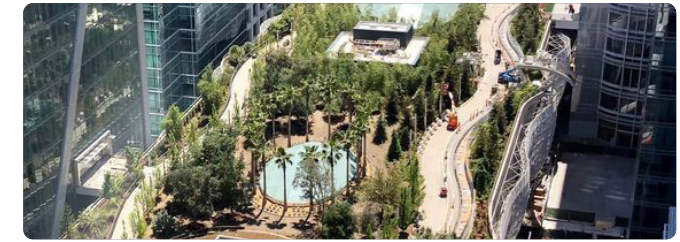


Base map courtesy of The East Cut CBD

PARK - PROPOSED PROGRAMS

ADJACENT NEIGHBORHOOD PARK PROGRAMS:

- **RINCON:** OPEN GREEN, PUBLIC ART
- **SALESFORCE:** GARDENS, KIDS PROGRAM & PLAY, STROLLING, EVENT SPACE & FOOD
- **UNDER RAMP (FUTURE):** DOG PARK, FOOD & BEVERAGE, SPORTS COURT



BLOCK 3 PARK PROPOSED PROGRAMS:

**CRITERIA: PROVIDE PROGRAMS NOT AVAILABLE AT ADJACENT NEIGHBORING PARKS
& CREATE A COMMUNITY BASED HUB**

- KIDS' PLAY ELEMENT
- PASSIVE RECREATION/GATHERING
- FLEXIBLE PROGRAM SPACE



DESIRED PROGRAM ELEMENTS

BLOCK 3 PARK: 40,000 SF

OPEN FLEXIBLE SPACES



LARGE SCALE SPACES FOR:



FLEXIBLE PROGRAMMING
MOVIE NIGHT
FARMERS MARKET
FOOD TRUCKS

GATHERING SPACES



MEDIUM SCALE SPACES FOR:



BIRTHDAY PARTIES
PICNICKING
COMMUNAL SEATING ZONE
COMMUNITY EVENTS

SEATING



SMALL SCALE SPACES FOR:



PLACES TO SIT BY YOURSELF OR IN SMALL
GROUPS SURROUNDED IN NATURE

PLAY



PLAY SIZE SIMILAR TO:



SOUTH PARK, SF
SQUARE JACQUES DE BOLLARDIERE,
NANTES, FR

HOW BIG IS BLOCK 3 PARK?

Block 3 Park
<1.0 Acre



Union Square - Downtown
2.6 Acres



Huntington Park - Nob Hill
1.3 Acres



South Park - South Beach
1.1 Acres

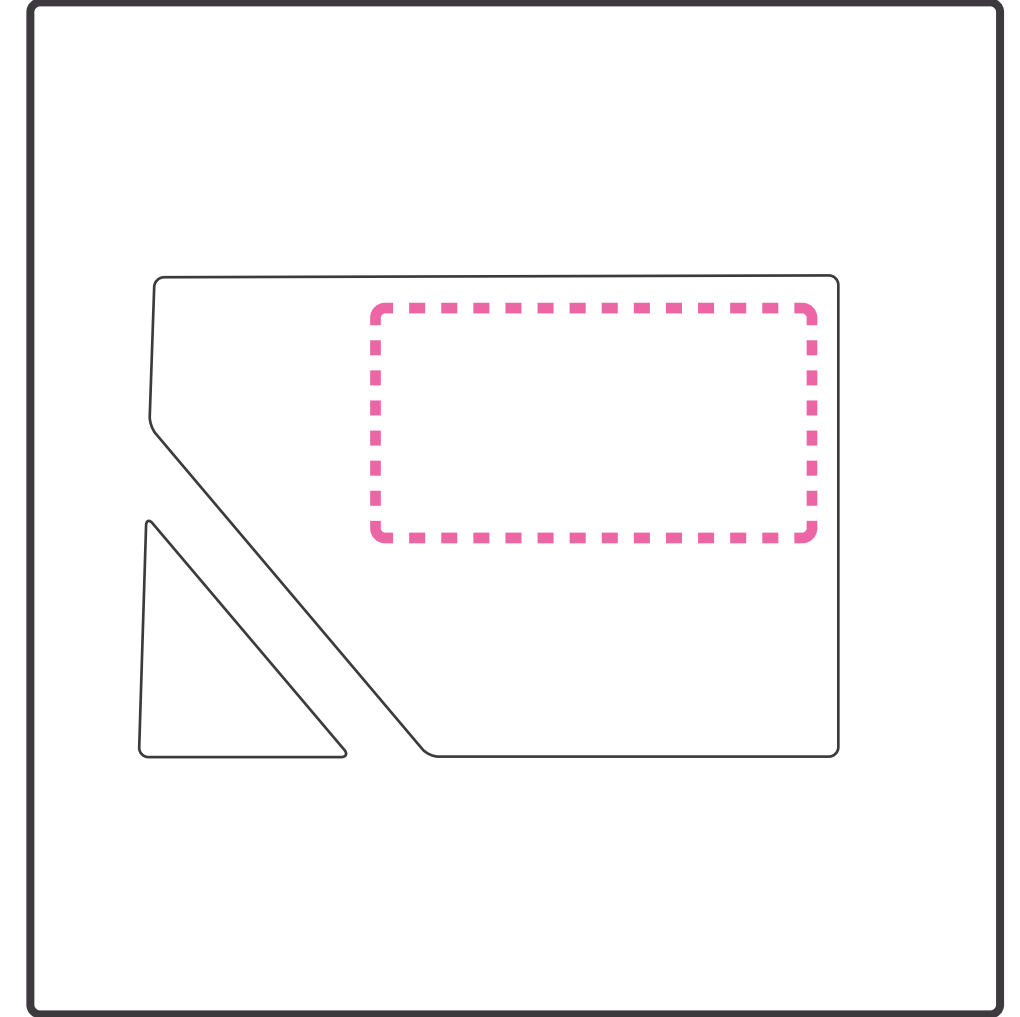
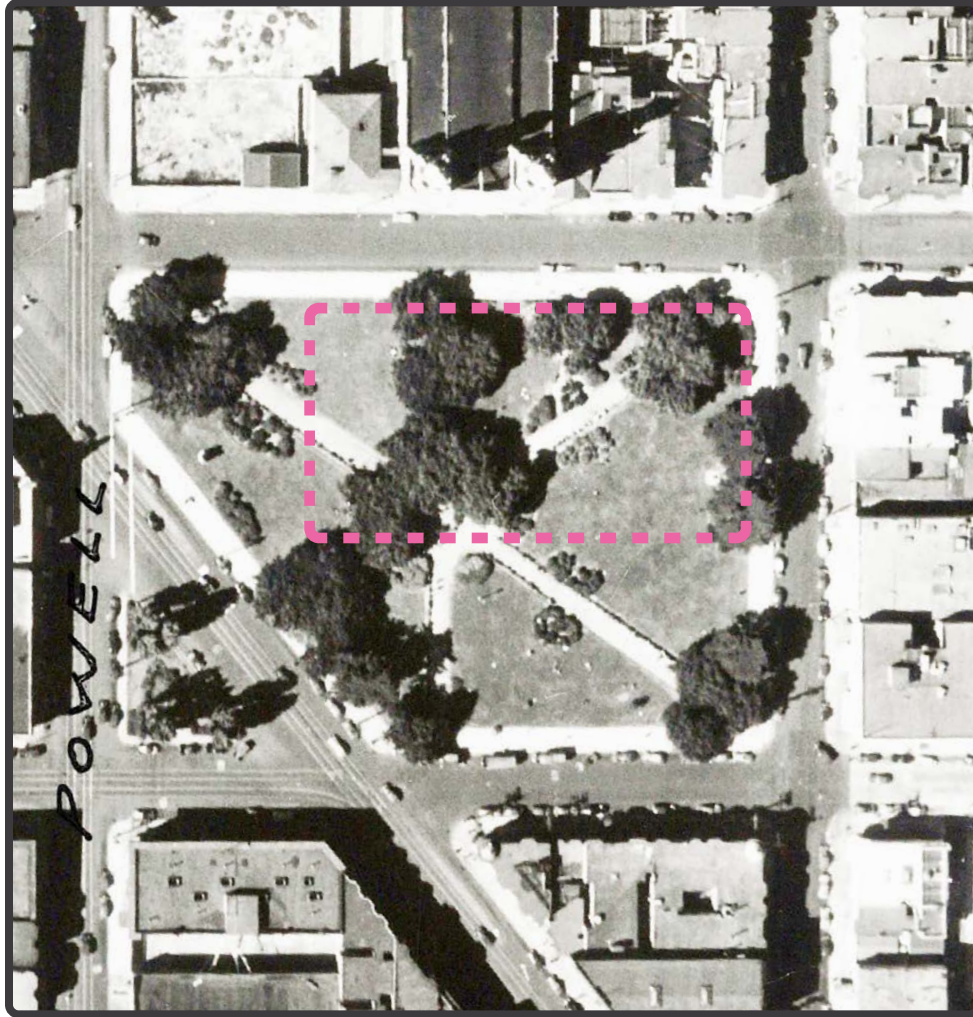


HISTORICAL PARK TYPOLOGIES

WASHINGTON SQUARE PARK: 2.4 ACRES

BLOCK 3 PARK: <1 ACRE

<1 ACRE



1870s - 1950s

FORMAL

1950s - CURRENT

INFORMAL

FUTURE FOR BLOCK 3 PARK

DESIGN =
SUSTAINABILITY GOAL + COMMUNITY NEEDS



TRANSBAY NEIGHBORHOOD HISTORY SUMMARY

TRANSPORTATION

ENVIRONMENT

SITE OCCUPANCY

5,000
YEARS AGO



+



+



18TH
CENTURY



+



+



19TH
CENTURY



+



+



CURRENT



+



+



FUTURE?









+

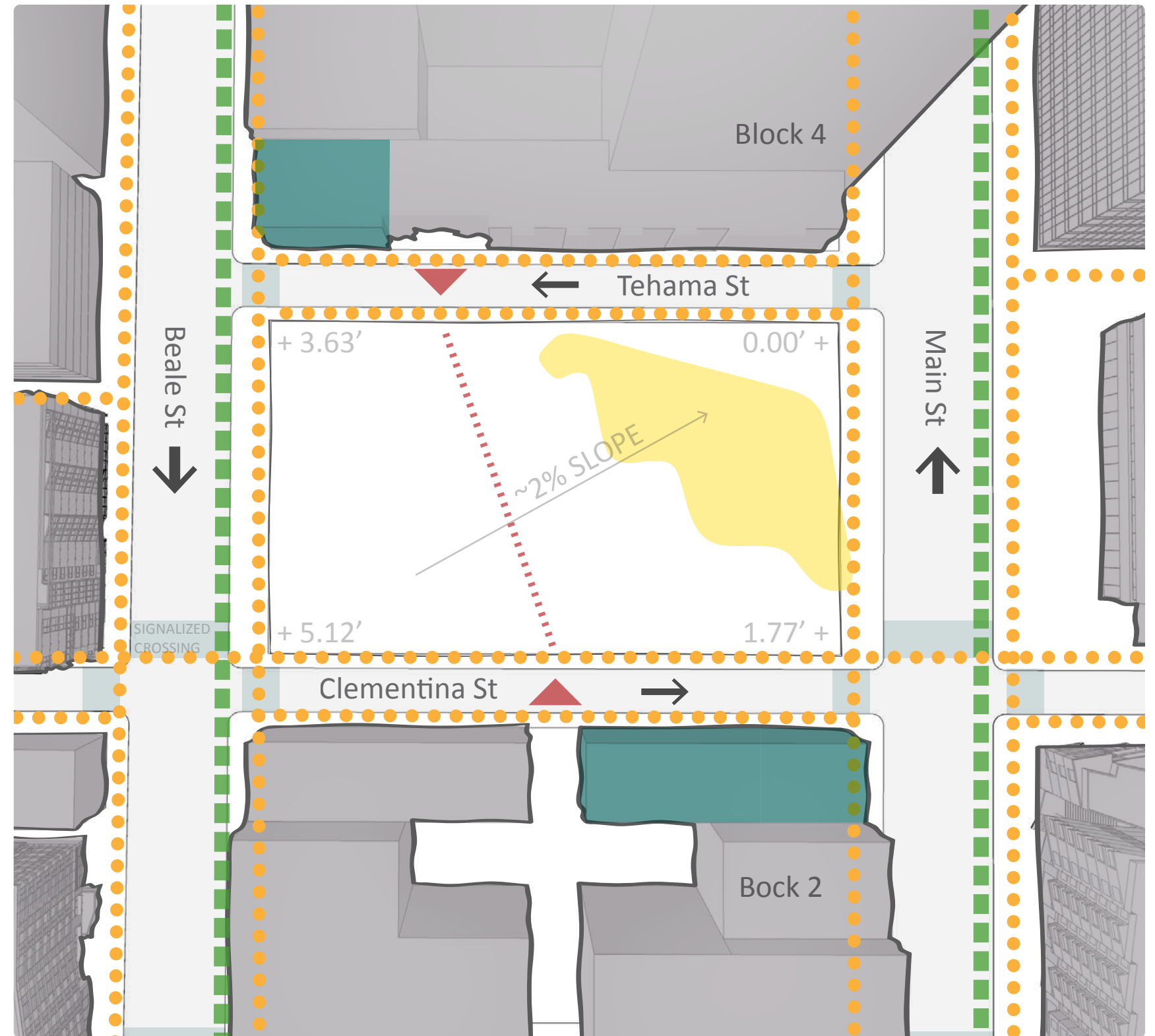


+



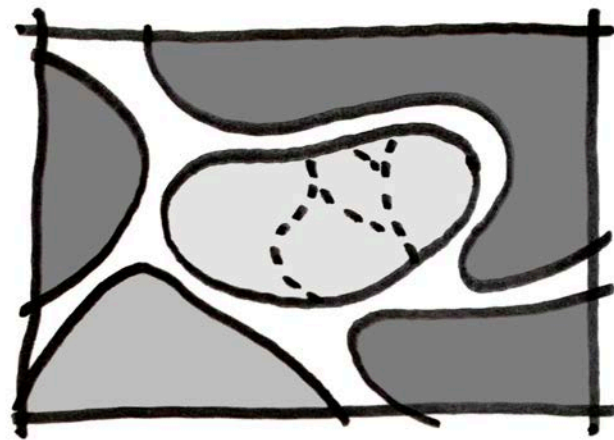
BLOCK 3 ANALYSIS

-  PEDESTRIAN CIRCULATION
-  MTA PLANNED BIKE PATHS
-  YEAR ROUND SUN ZONE
-  POTENTIAL GROUND FLOOR RETAIL
-  RESIDENTIAL CONNECTIONS TO PARK
-  VEHICULAR TRAFFIC DIRECTION

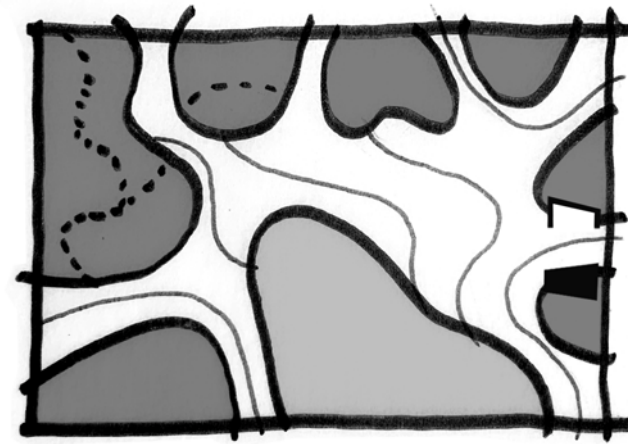


PART III - PARK DESIGN ALTERNATIVES

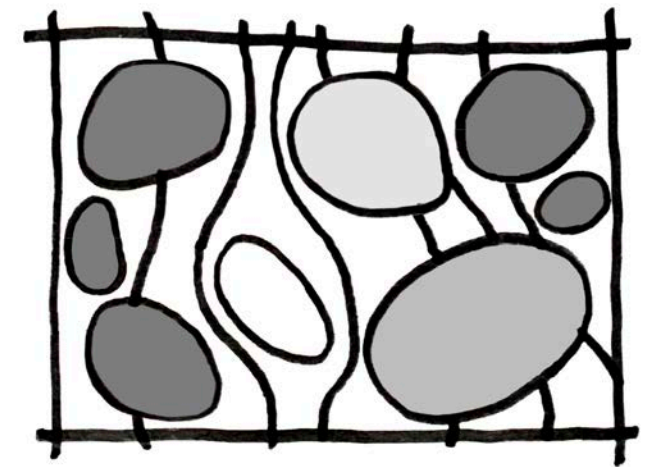
BLOCK 3 PARK CONCEPT DESIGN ALTERNATIVES



THE CLEARING

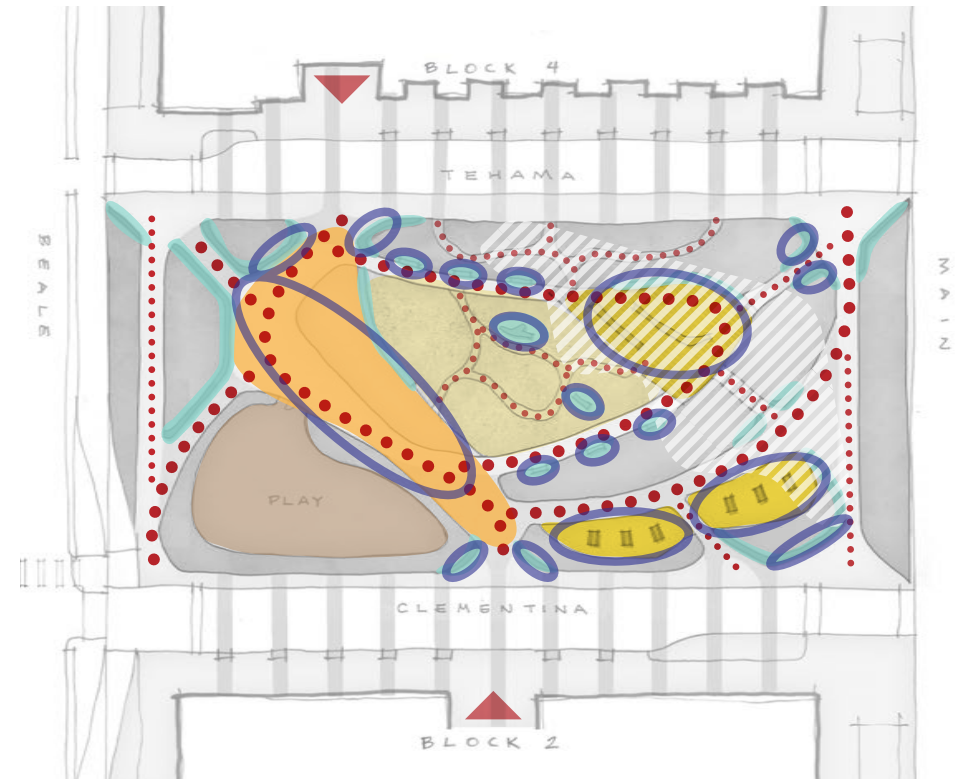
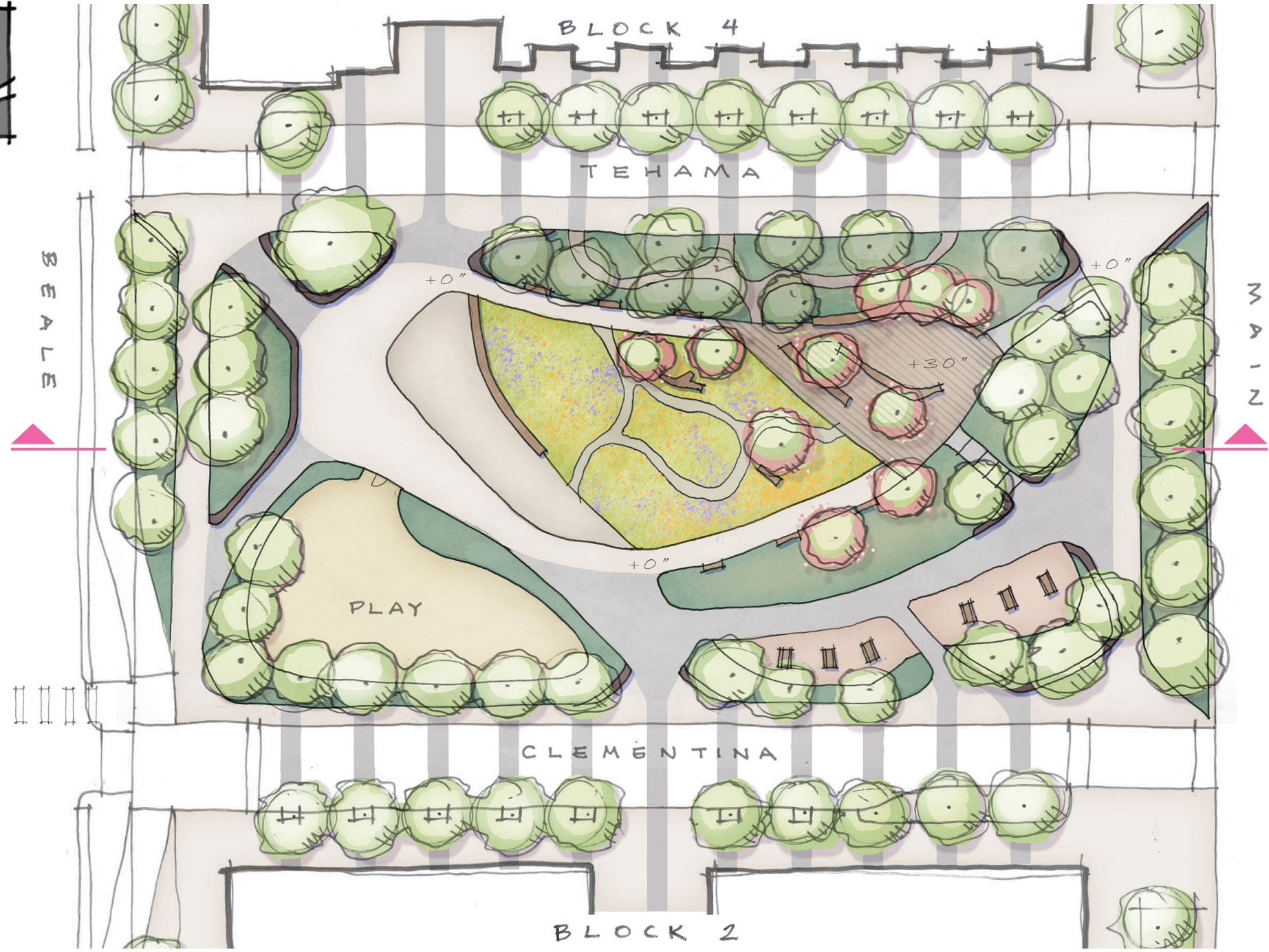
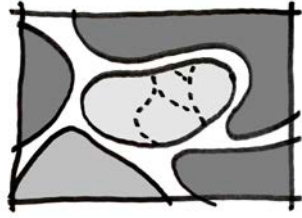


THE COMMONS



THE RIPPLE

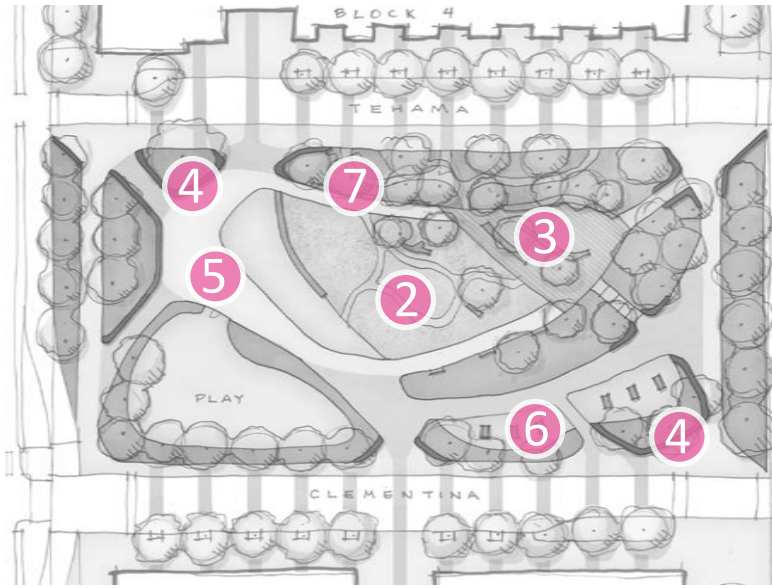
THE CLEARING



- MAJOR CIRCULATION
- MINOR CIRCULATION
- OPEN FLEXIBLE SPACES
- GATHERING SPACES
- SEATING
- PLAY
- ▨ MOST SUN YEAR ROUND



THE CLEARING INSPIRATION



1 CLEARING DESIGN CONCEPT



2 NATURAL MEADOW



3 WOODEN TERRACE



4 STONE WALL



5 MULTI-TONED PAVING

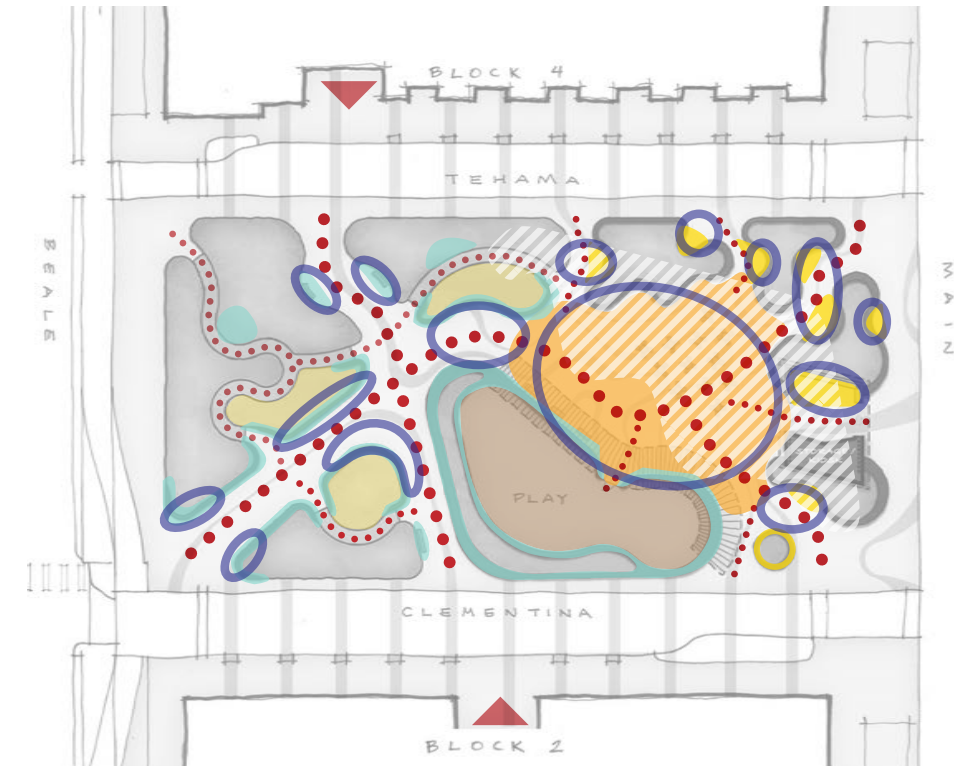
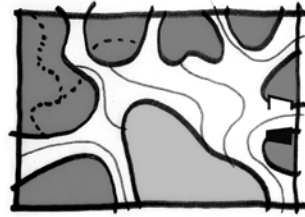


6 PICNIC TABLE



7 WOODEN BENCH

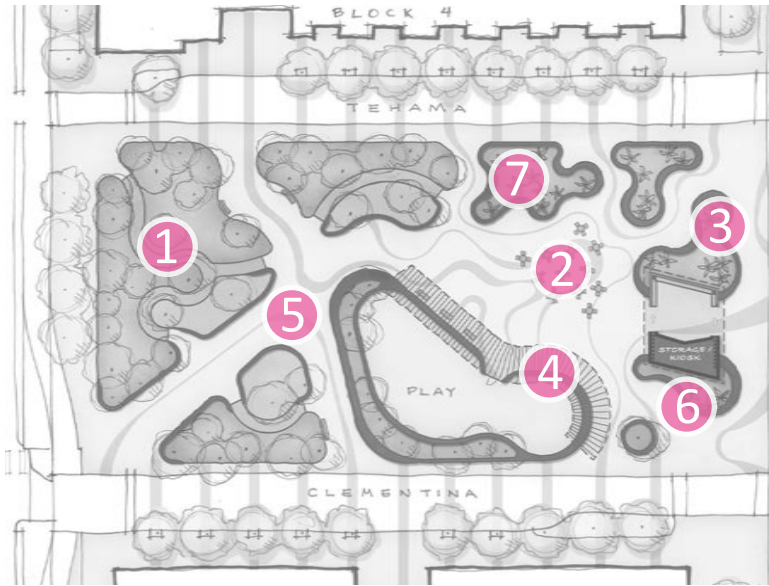
THE COMMONS



- MAJOR CIRCULATION
- MINOR CIRCULATION
- OPEN FLEXIBLE SPACES
- GATHERING SPACES
- SEATING
- PLAY
- ▨ MOST SUN YEAR ROUND
- ✕ FLEXIBLE TABLES/CHAIRS



THE COMMONS INSPIRATION



1 FOREST WALK



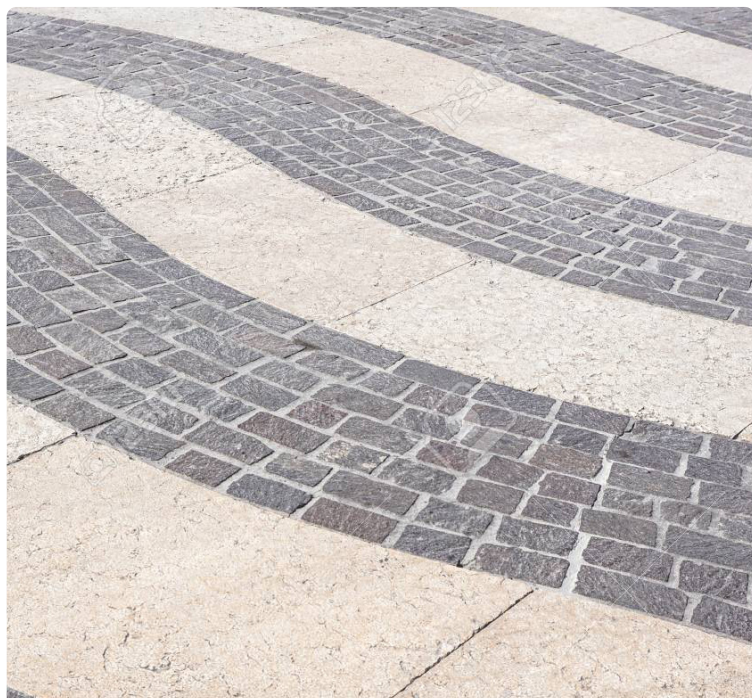
2 FLEXIBLE TABLES AND CH AIRS



3 CURVED SEATWALL



4 OVERHEAD STRUCTURE



5 WAVY PAVING

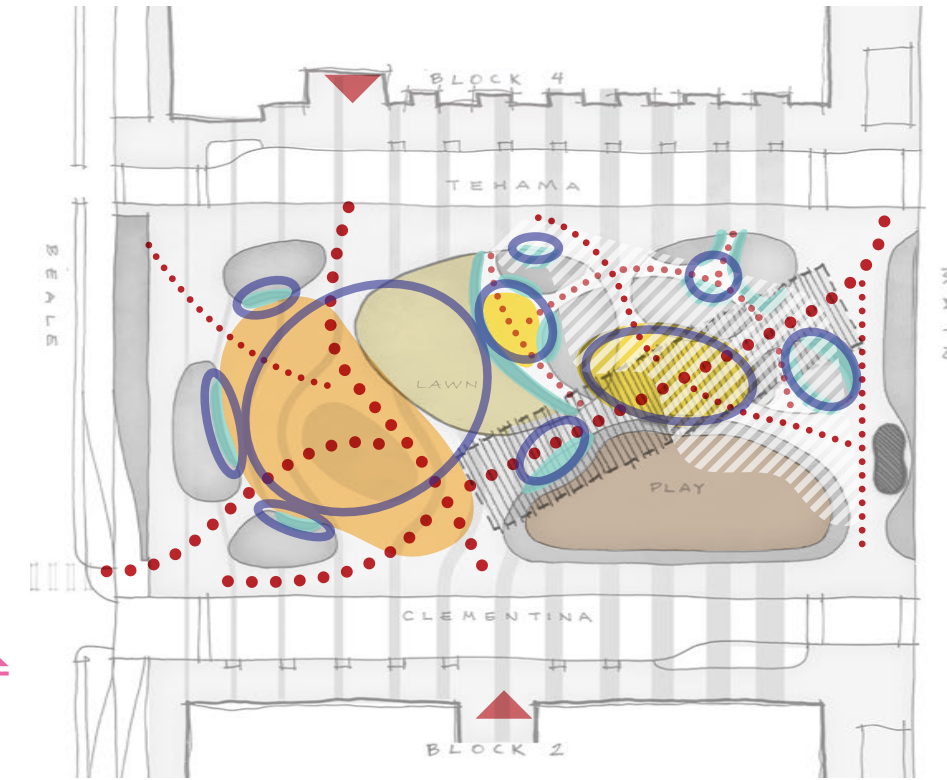
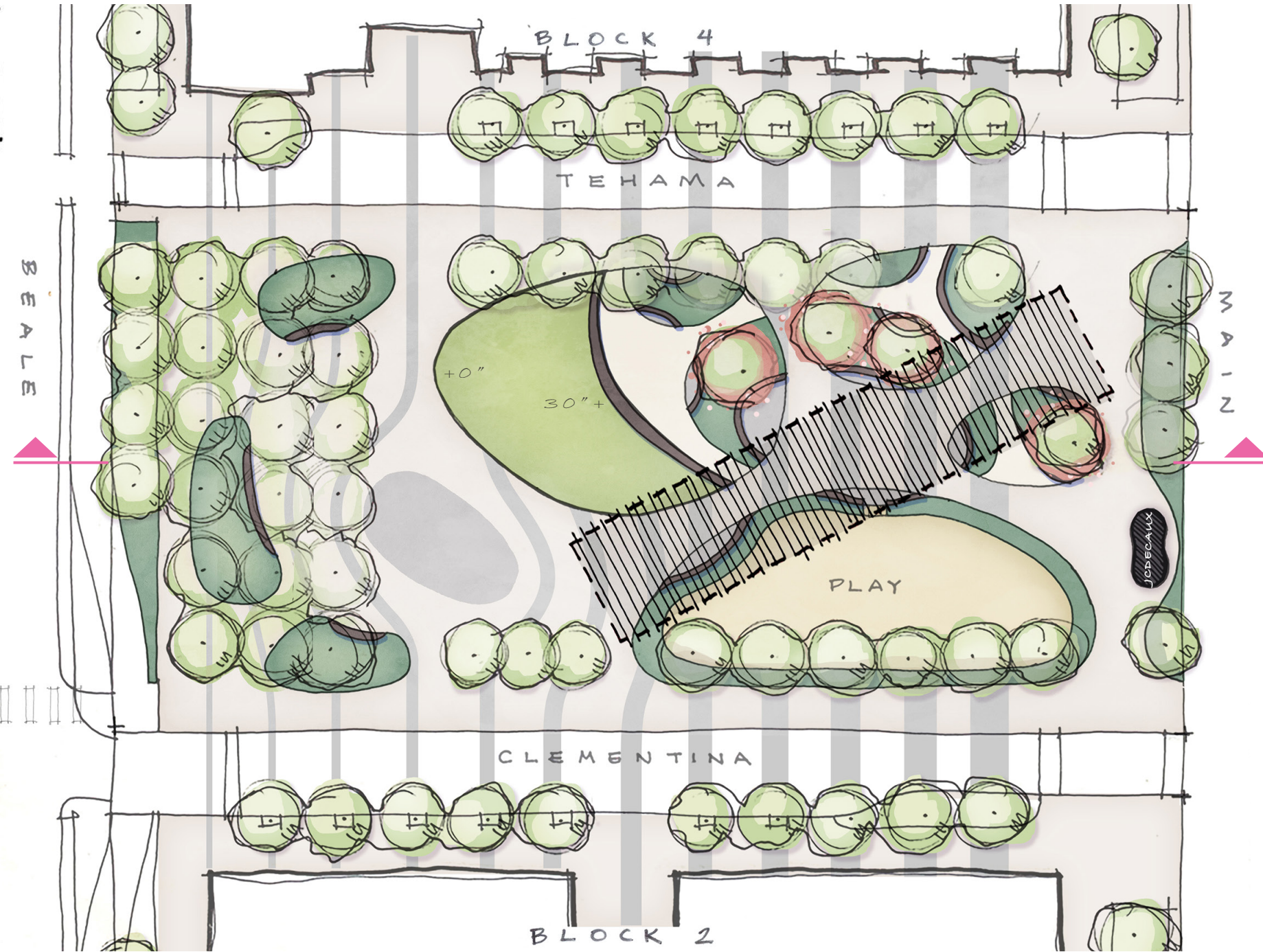
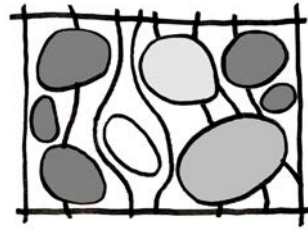


6 COLORFUL WINDY BENCHES



7 RE-USE EXISTING PALMS

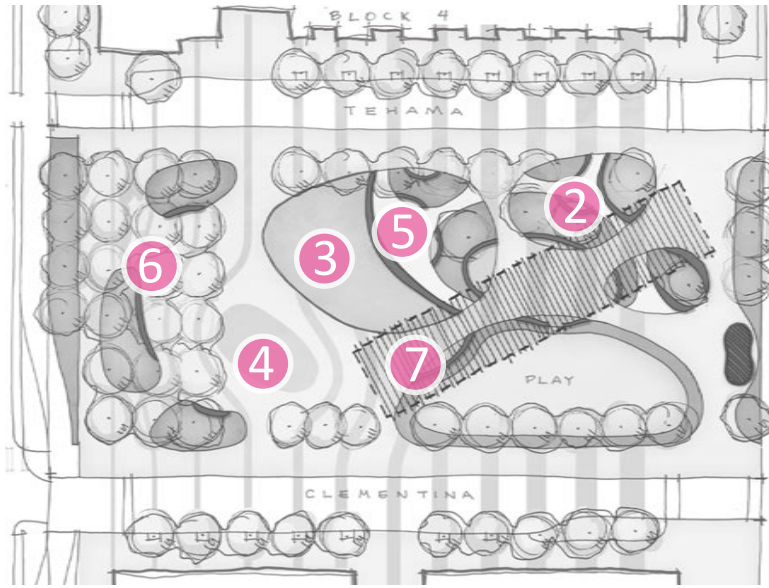
THE RIPPLE



- MAJOR CIRCULATION
- MINOR CIRCULATION
- OPEN FLEXIBLE SPACES
- GATHERING SPACES
- SEATING
- PLAY
- ▨ MOST SUN YEAR ROUND



THE RIPPLE INSPIRATION



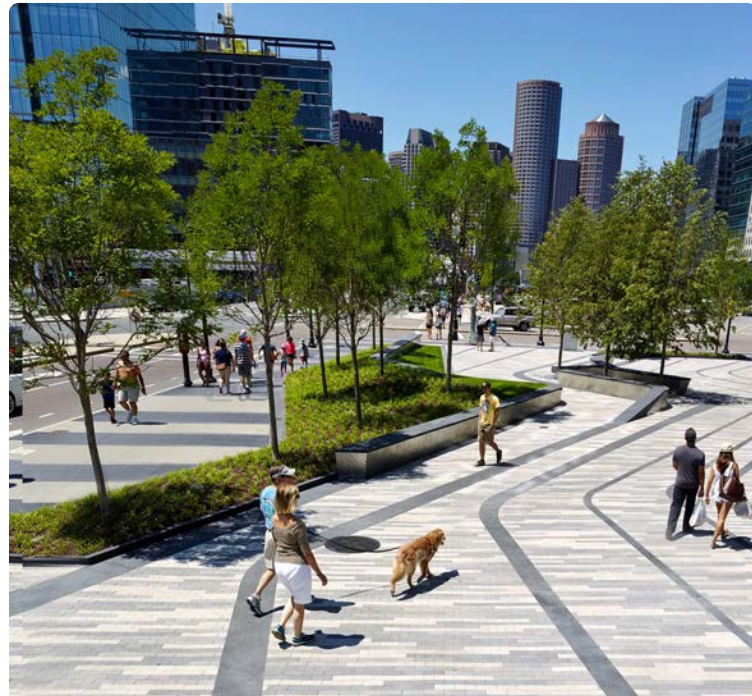
1 ISLAND DESIGN CONCEPT



2 ISLAND INHABITATION



3 ELEVATED TURF



4 PAVING RIPPLES



5 ISLAND SEATING



6 TREE GROVE



7 OVERHEAD W/ SWING BENCH

PLAY INSPIRATION

PLAYGROUND SPACES



STRUCTURE BASED PLAY



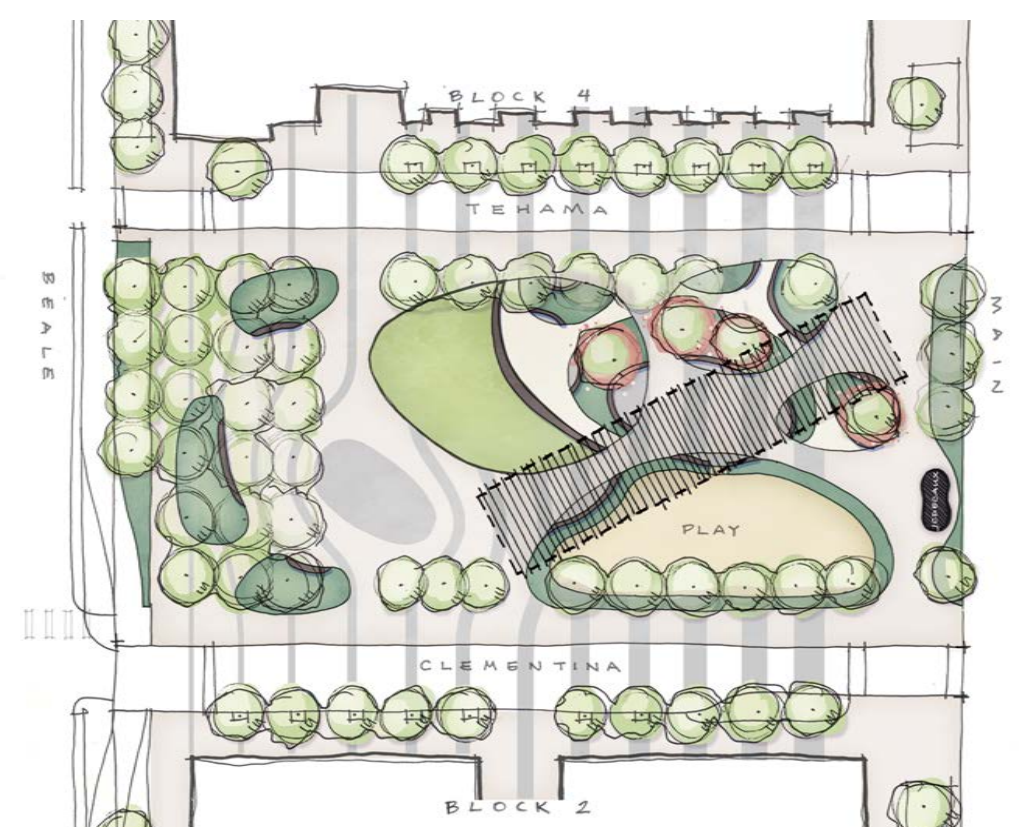
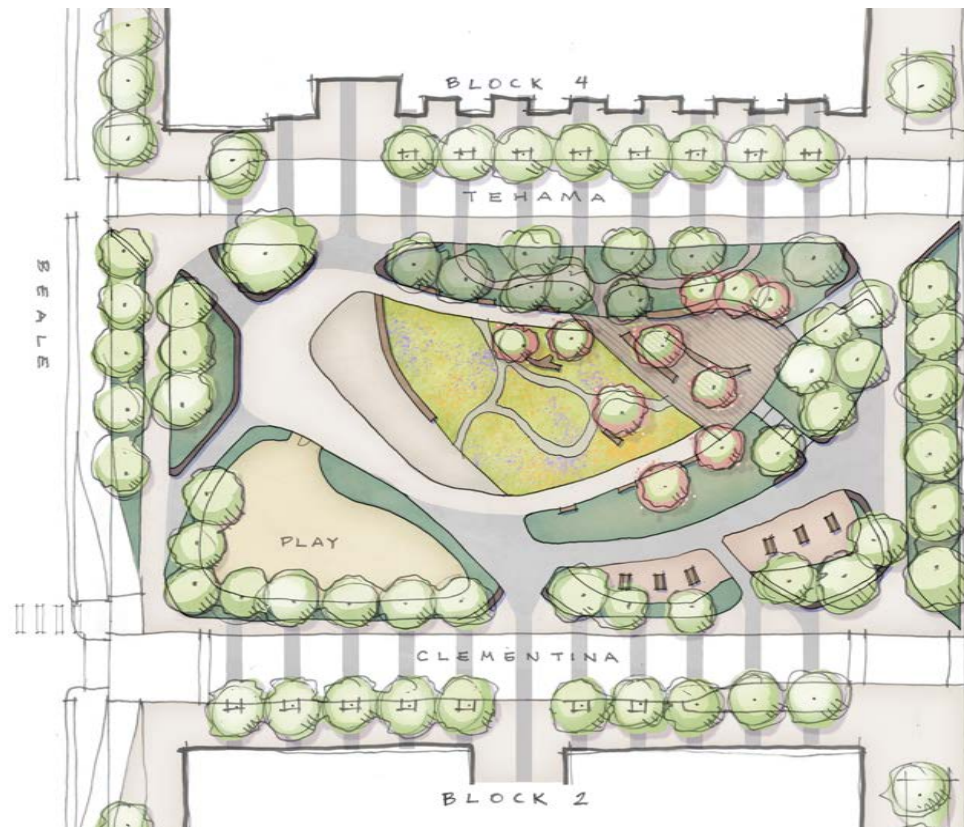
INTERACTIVE PLAY



IMAGINATIVE PLAY



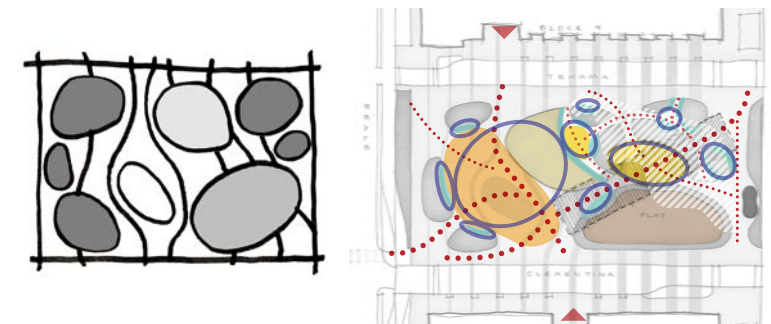
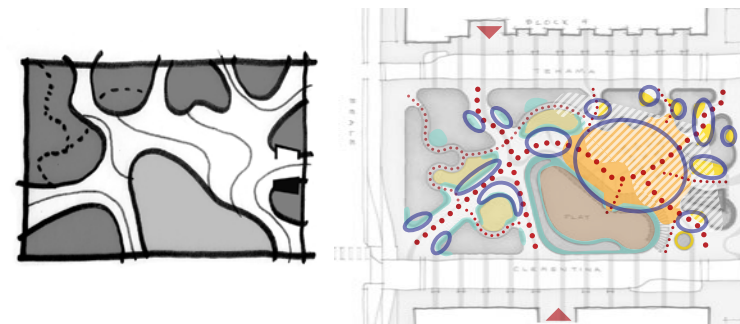
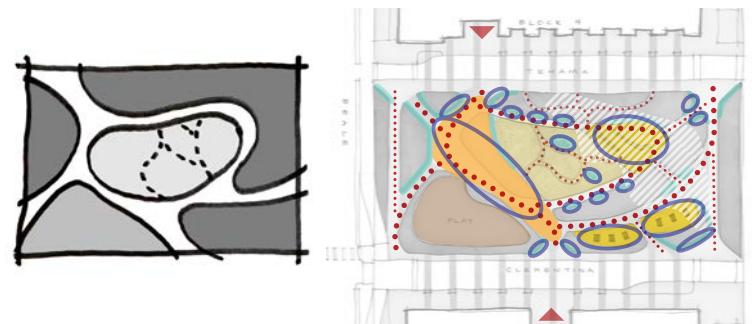
COMPARATIVE DESIGN ALTERNATIVES



THE CLEARING

THE COMMONS

THE RIPPLE



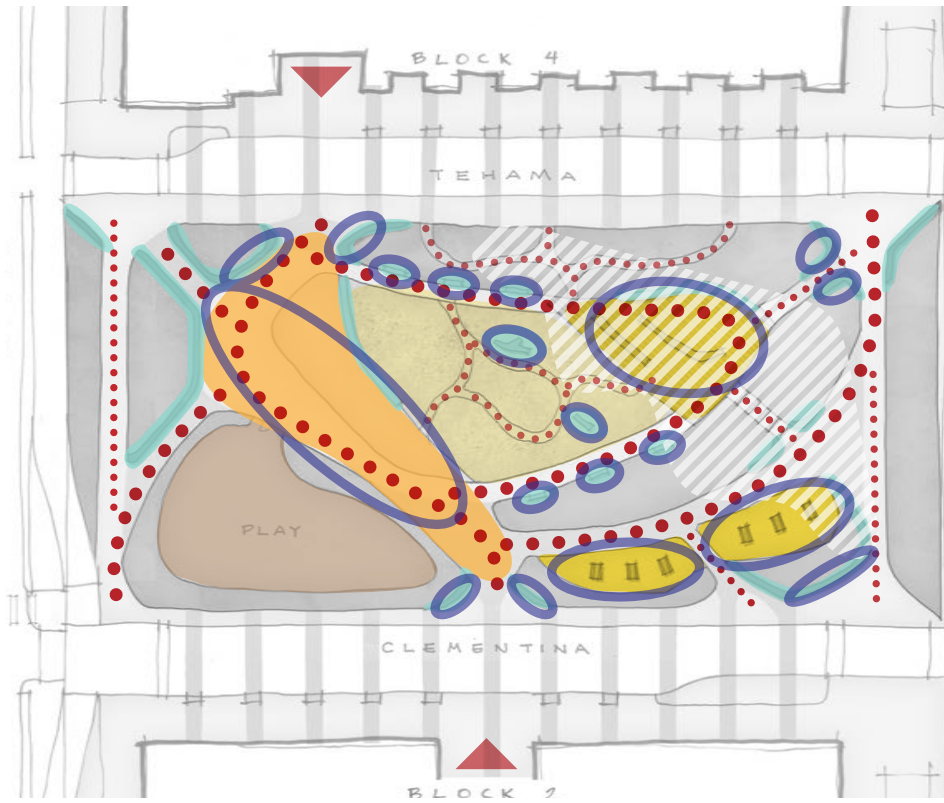
● OPEN FLEXIBLE SPACES

● GATHERING SPACES

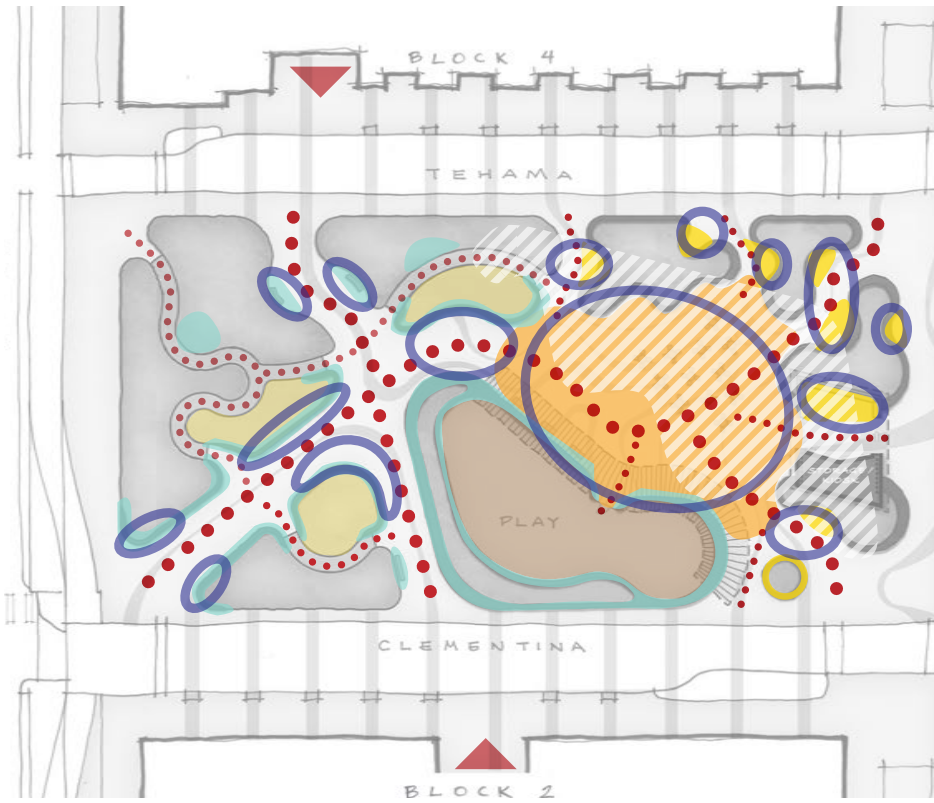
● SEATING

● PLAY

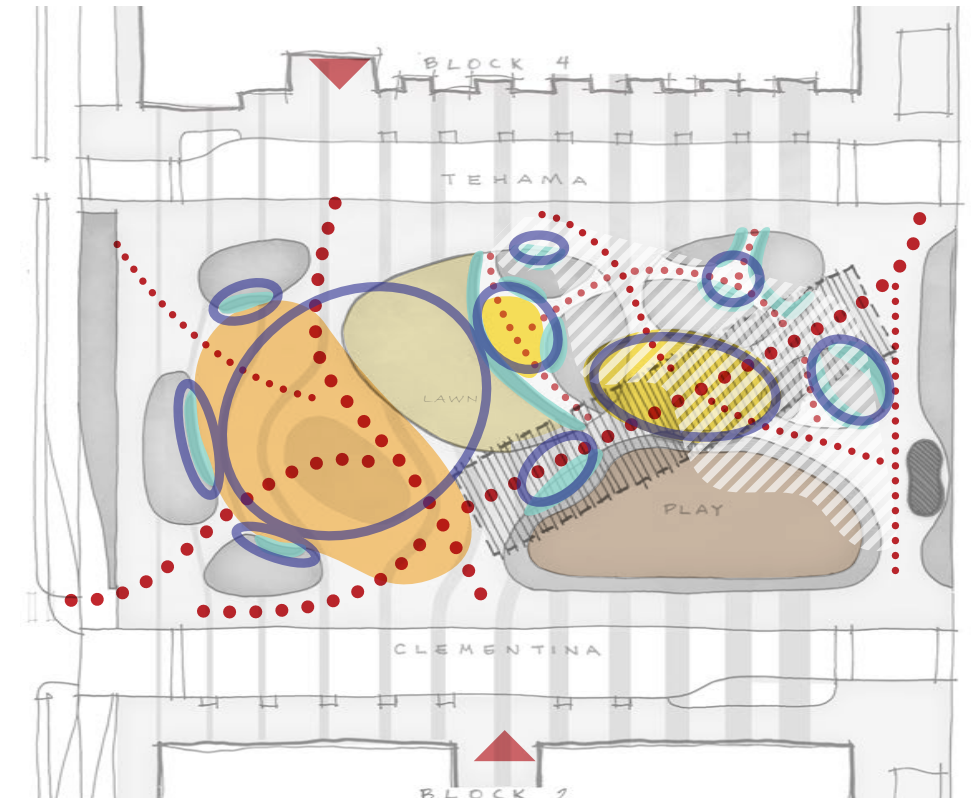
COMPARATIVE PROGRAM STRATEGIES



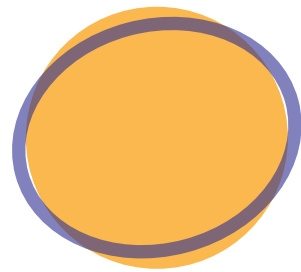
THE CLEARING



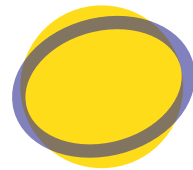
THE COMMONS



THE RIPPLE



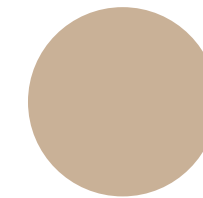
OPEN FLEXIBLE SPACES
3,000 - 6,000 SF



GATHERING SPACES
500-2,000 SF



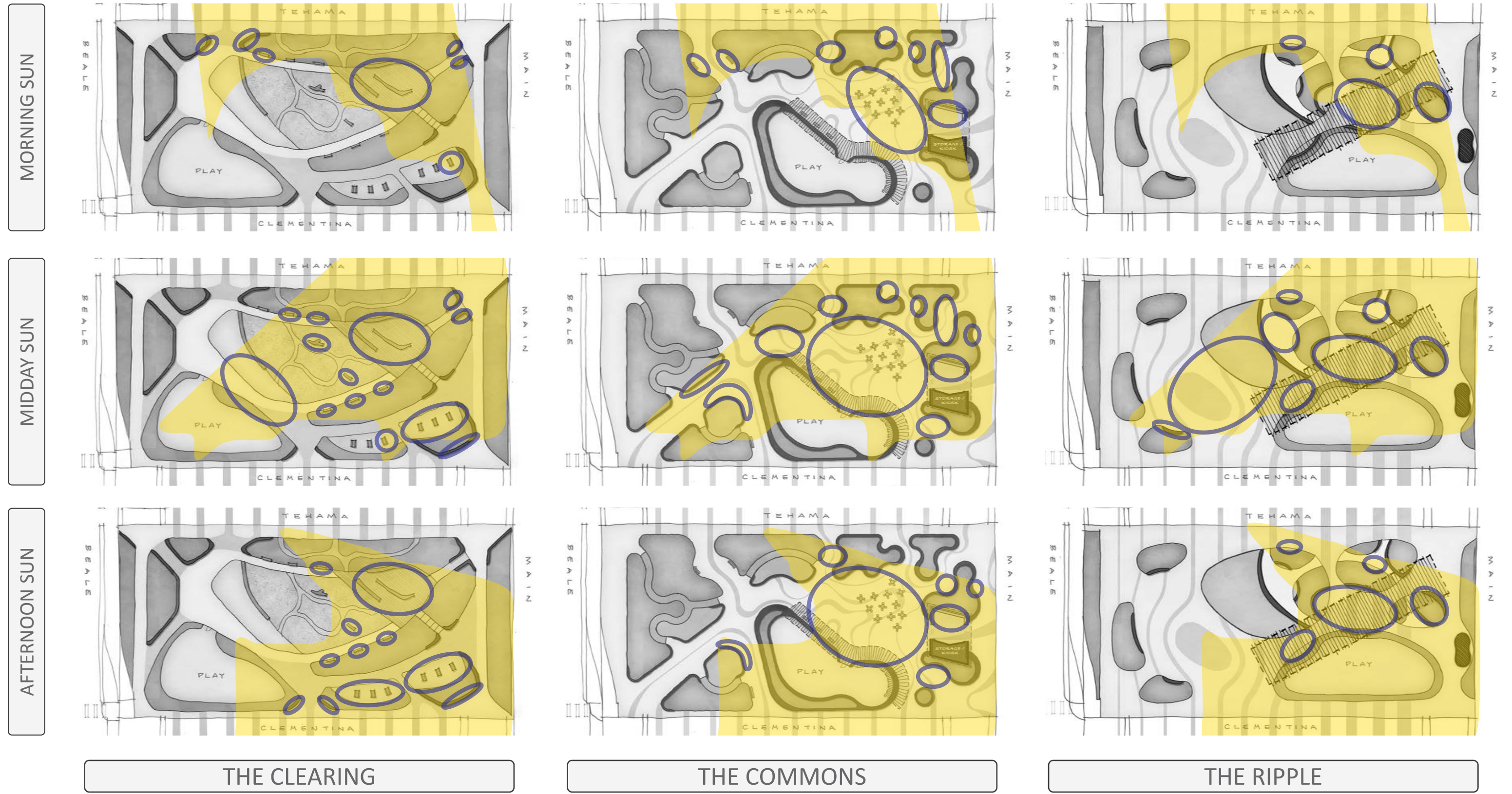
SEATING
50 SF



PLAY
4,000 SF

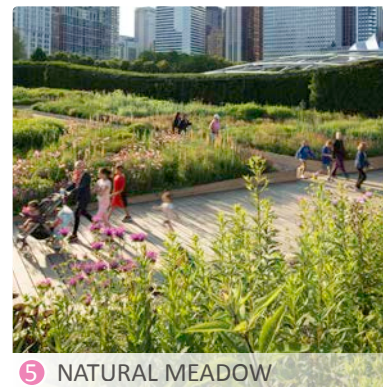
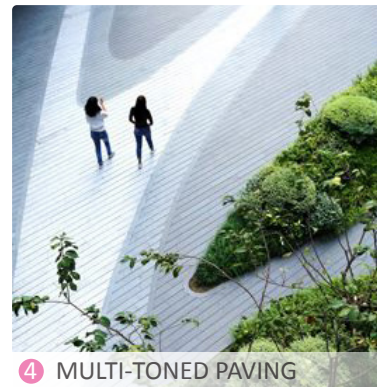
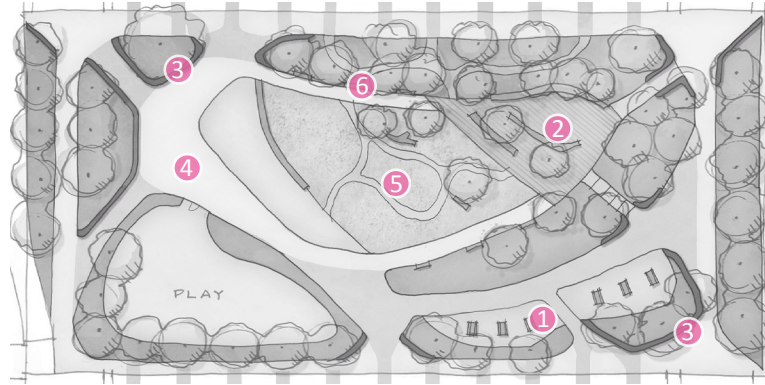


COMPARATIVE SUN/PROGRAM AREAS YEAR ROUND

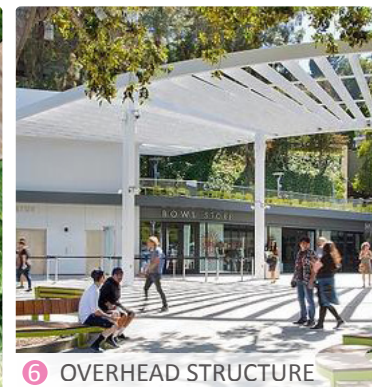
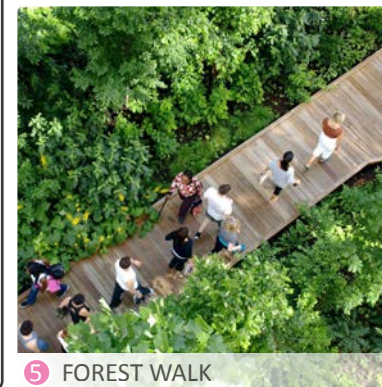
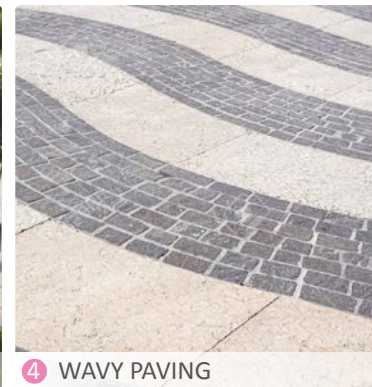
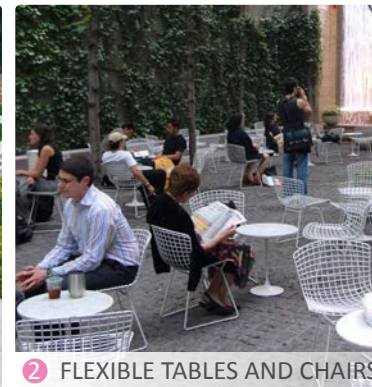


COMPARATIVE DESIGN INSPIRATIONS

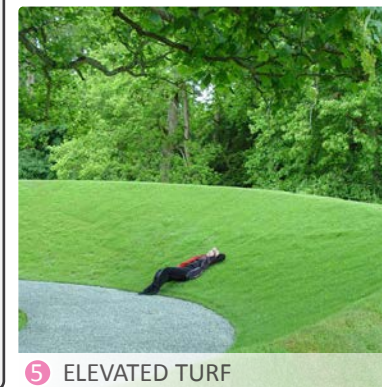
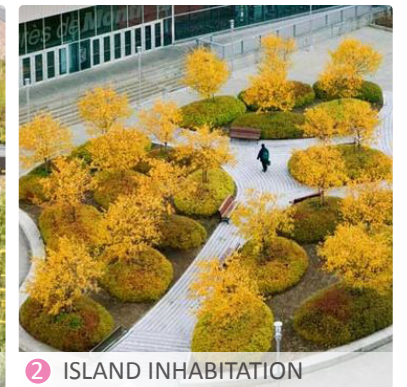
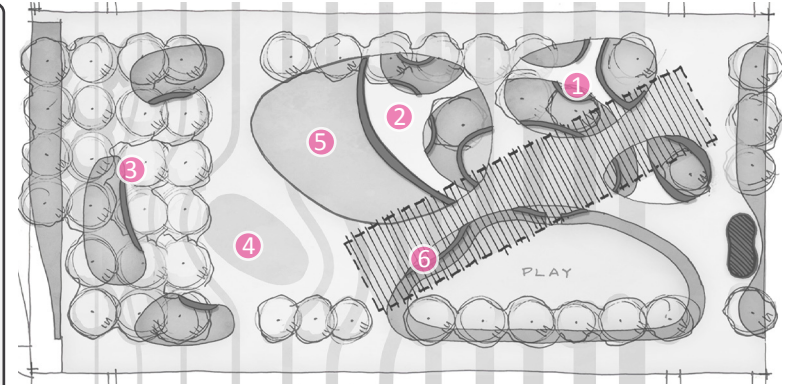
THE CLEARING



THE COMMONS



THE RIPPLE



FEEDBACK

QUESTION & ANSWER SESSION WITH PANELISTS

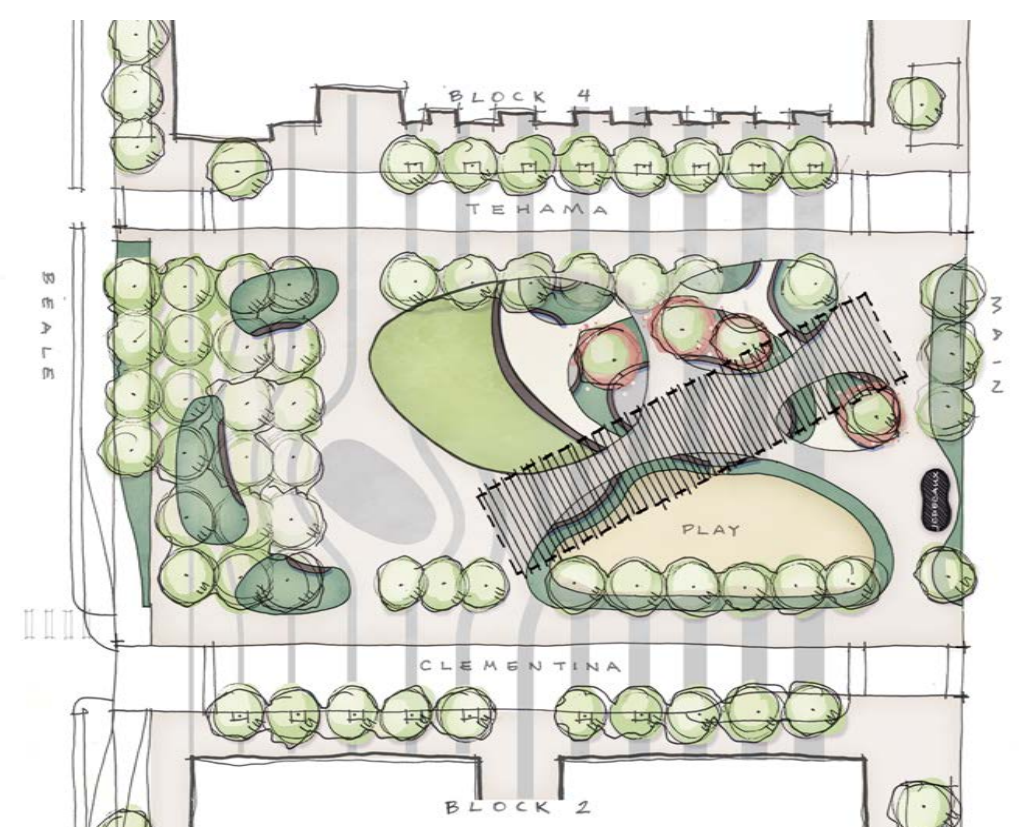
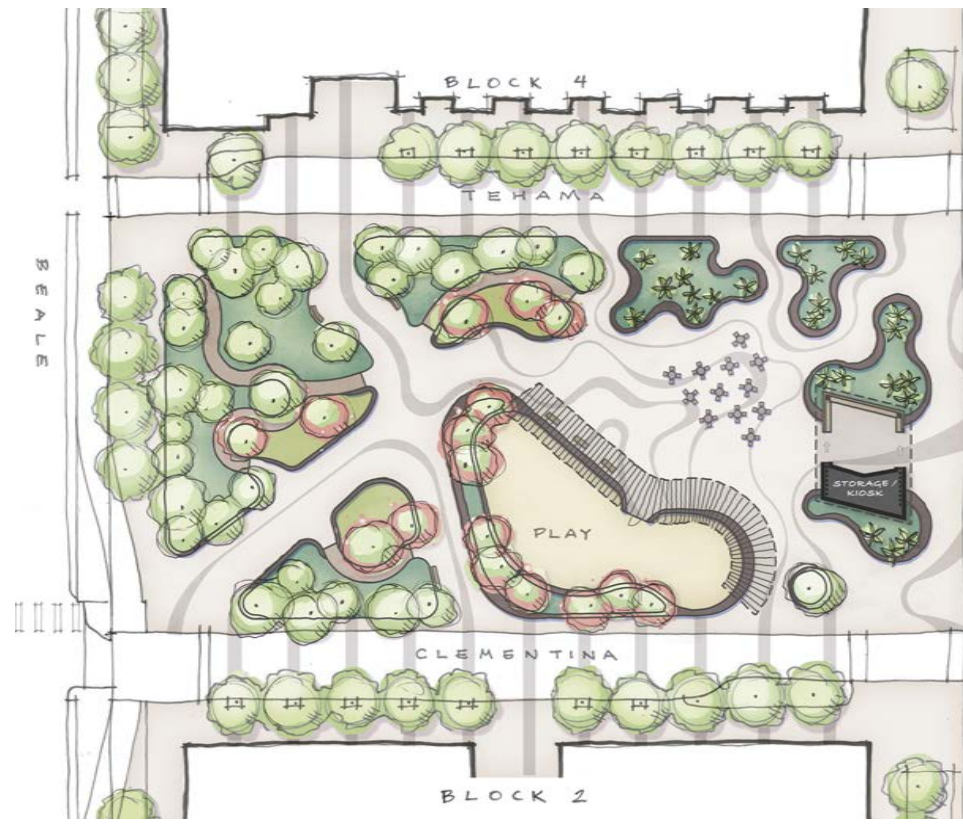
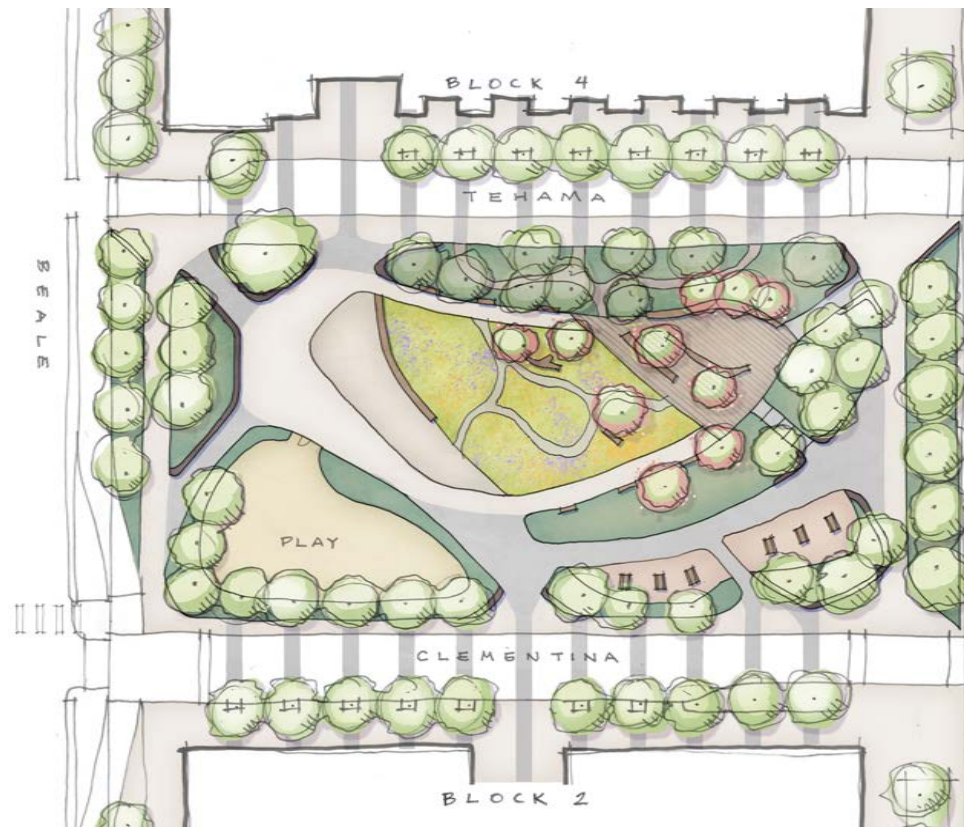
PLEASE SHARE YOUR THOUGHTS, OBSERVATIONS, AND QUESTIONS

- IS THERE A DESIGN ALTERNATIVE YOU ARE MOST DRAWN TO AND WHY?
- WHAT PARK ELEMENT IS MOST IMPORTANT TO YOU?
- IS SOMETHING MISSING YOU WOULD LIKE TO SEE?

PLEASE FILL OUT THE SURVEY WITHIN THE NEXT TWO WEEKS:

<https://www.surveymonkey.com/r/TransbayBlock3-CM2>

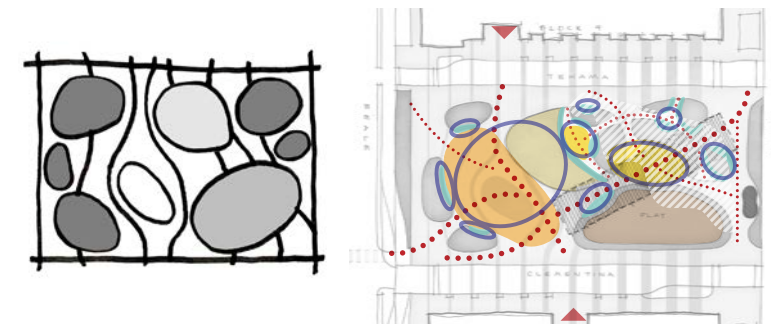
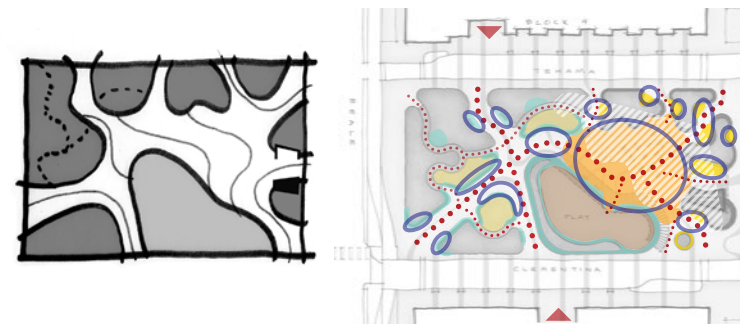
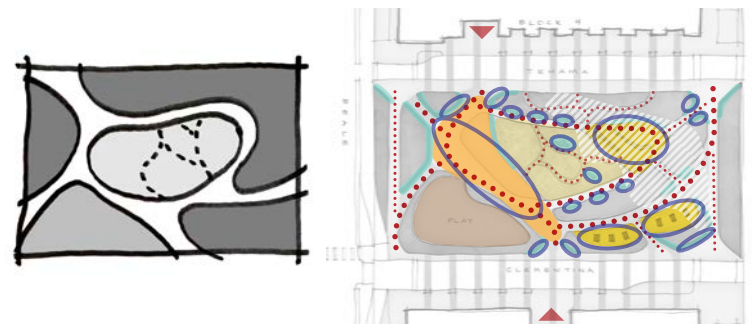
COMPARATIVE DESIGN ALTERNATIVES



THE CLEARING

THE COMMONS

THE RIPPLE



● OPEN FLEXIBLE SPACES

● GATHERING SPACES

● SEATING

● PLAY

PROJECT SCHEDULE

PROJECT SCHEDULE: DEC 2019 - WINTER 2024

CONCEPT/PLANNING	11 MONTHS
SCHEMATIC DESIGN	8.5 MONTHS
DESIGN DEVELOPMENT	5 MONTHS
CONSTRUCTION DOCUMENTS	8 MONTHS
BID/AWARD	4.5 MONTHS
CONSTRUCTION	24 MONTHS

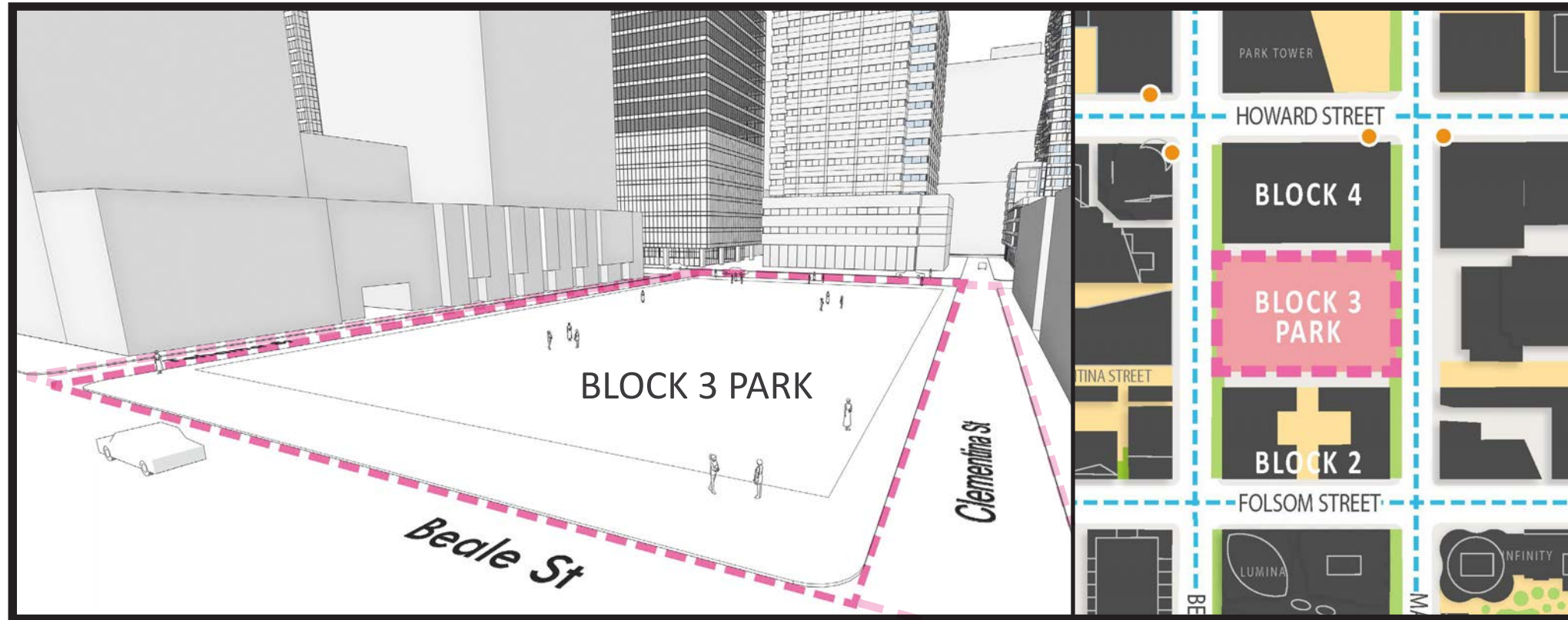
CONCEPT PHASE - OUTREACH SCHEDULE

COMMUNITY MEETING 1:	INFORMATION GATHERING
COMMUNITY MEETING 2:	INITIAL DESIGN IDEAS
COMMUNITY MEETING 3:	DESIGN REFINEMENT PUBLIC SURVEYS



CONTACT

FOR REGULAR UPDATES, VISIT THE PUBLIC WORKS WEBSITE: <http://sfpublicworks.org/Block3Park>

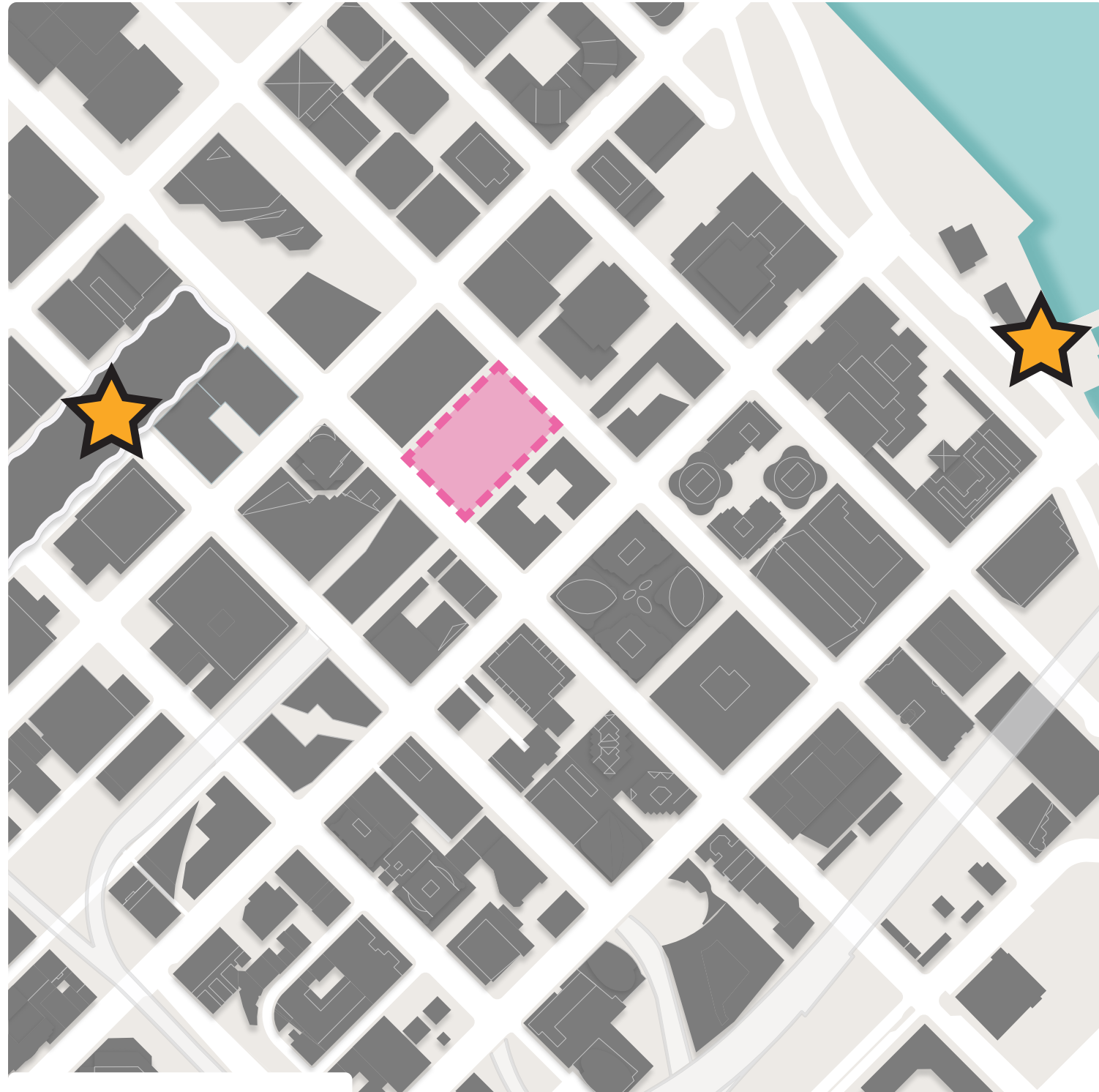


FOR QUESTIONS OR MORE INFORMATION, PLEASE CONTACT KATHLEEN O'DAY:

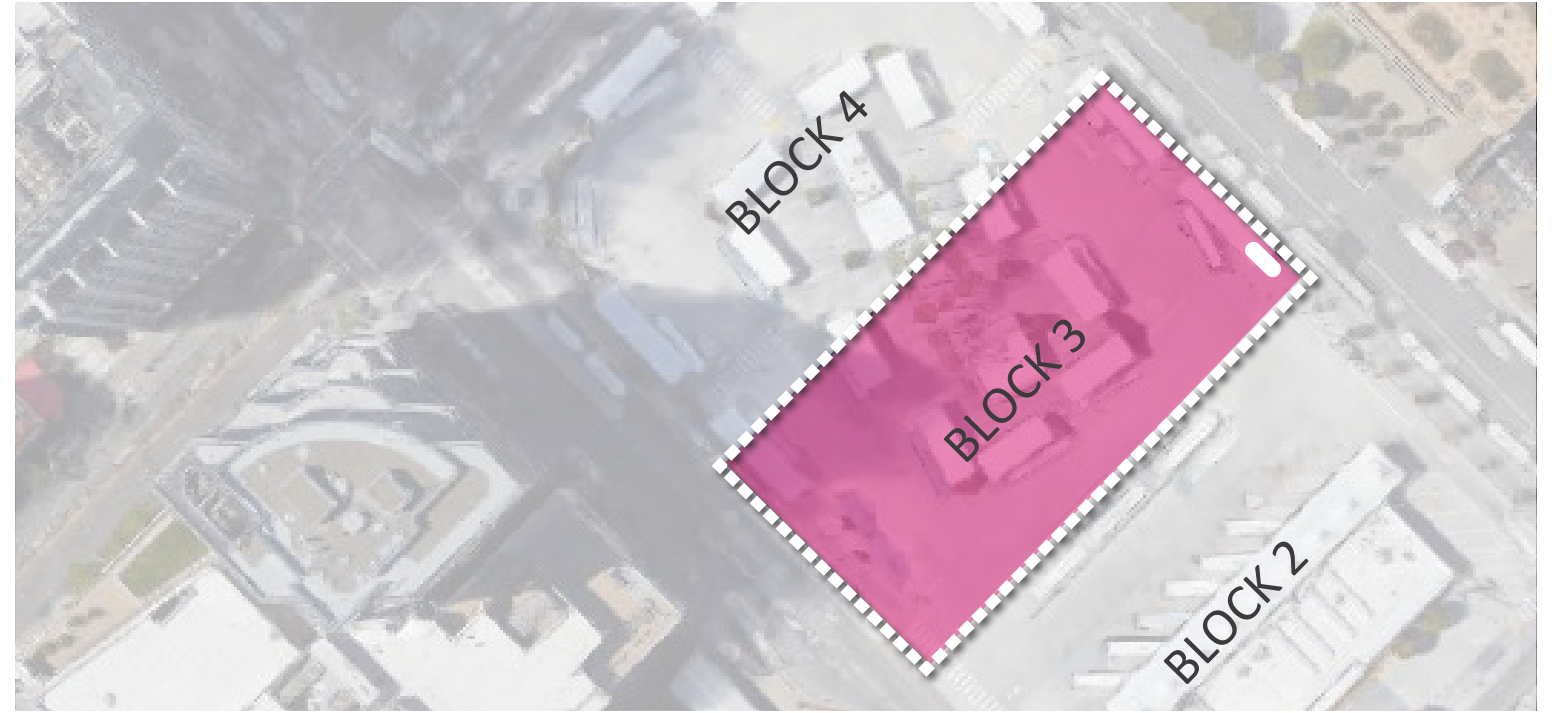
KATHLEEN.ODAY@SFDPW.ORG; (415) 218-7515

APPENDIX

RESTROOM CONTEXT



6 MIN. WALK TO PUBLIC RESTROOMS



RESTROOM SCALE STUDY



JC DECAUX (CONCEPT IN DESIGN FOR INSTALLATION IN SF)

