

WELCOME!

This live event will begin shortly...

MARKET OCTAVIA
LIVING ALLEYS 

Workshop 3 | January 27, 2021 | 6-7p

sfpublicworks.org/living-alleys

● THIS EVENT IS BEING RECORDED AND WILL BE MADE AVAILABLE ON THE WEBSITE

MARKET OCTAVIA
LIVING ALLEYS 

Workshop 3 | January 27, 2021



WORKSHOP 3 AGENDA

PROGRAM UPDATE //

PREFERRED CONCEPT DESIGNS //

NEXT STEPS //

QUESTIONS, SUGGESTIONS, STORIES //

Throughout the presentation, please share your questions, suggestions, and stories through the Q&A chat function. At the end of the presentation, a facilitator will respond to some of the most common questions

POLL

Did you attend Workshop #2 in October?

An aerial photograph of a public square or plaza. In the center, a group of people is gathered, some standing and some sitting on a bench. The ground is paved with light-colored tiles. To the left, there's a concrete bench and a yellow tactile paving strip. A large white rectangular box is overlaid on the center of the image, containing the text 'PROGRAM INFORMATION //'. The background shows a building with a tree and a paved area with some yellow markings.

PROGRAM INFORMATION //

A LIVING ALLEY is a narrow, pedestrian-oriented street that is designed to focus on livability, instead of parking and traffic. Typically, this means creating a street primarily for pedestrians and bicyclists, as well as space for social uses. It can be considered an “urban living room”.



FUNDING AND IMPLEMENTATION

- **Living Alleys Program Transition //**

The Living Alleys Program is now under the direction of San Francisco Public Works who will provide the design and implementation of a community supported vision for living alley improvements within the Market Octavia Plan area

- **Alley Selection //**

Alleys selected for this phase of the program were the result of stakeholder input and selection criteria that looked at everything from paving conditions and adjacent land uses to opportunities for stewardship and programming

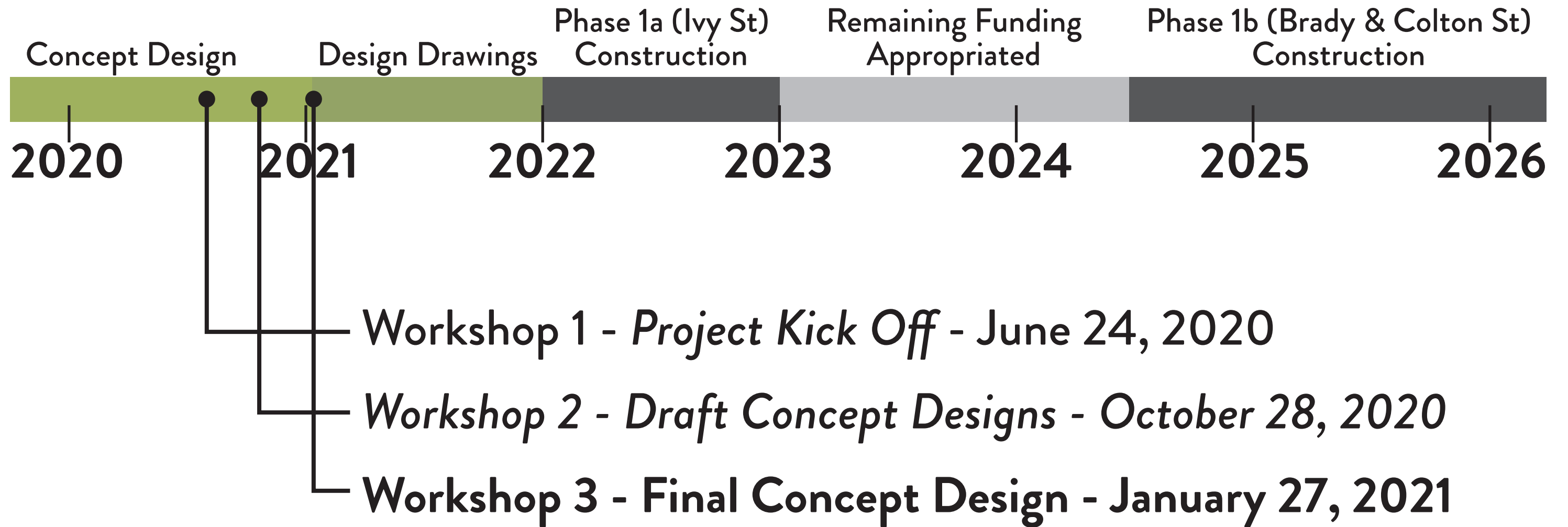
- **\$4M from Market Octavia Impact Fees //**

CAC approved allocation of these funds for Living Alleys public realm improvements

- **Full funding to come on line through Fiscal Year 2023-2024 //**

Funds are dependent on projected developments within the Market Octavia Area Plan and Market Octavia Plan Amendment boundaries and will be apportioned each fiscal year

IMPLEMENTATION TIMELINE



An aerial photograph of a public plaza. In the foreground, a group of people is gathered on a paved area. To the left, a person in a bright pink shirt sits on a bench. A yellow tactile paving strip runs across the plaza. In the background, there are trees and a building. A large white rectangular overlay is centered in the image, containing the text 'PREFERRED CONCEPT DESIGNS //'.

PREFERRED CONCEPT DESIGNS //

BRADY STREET //

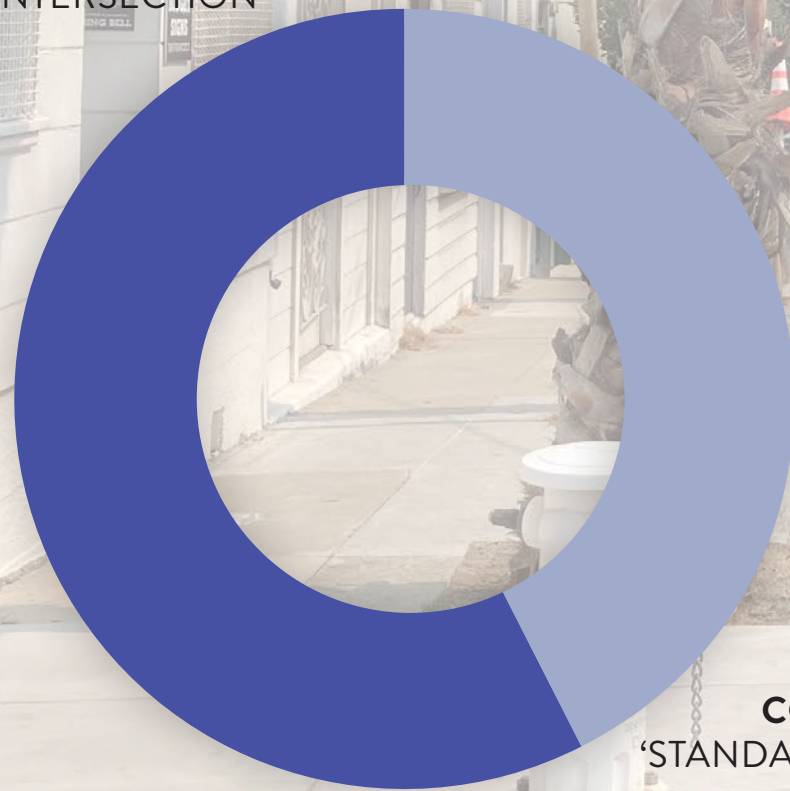
Market to Otis



BRADY STREET // WHAT WE HEARD

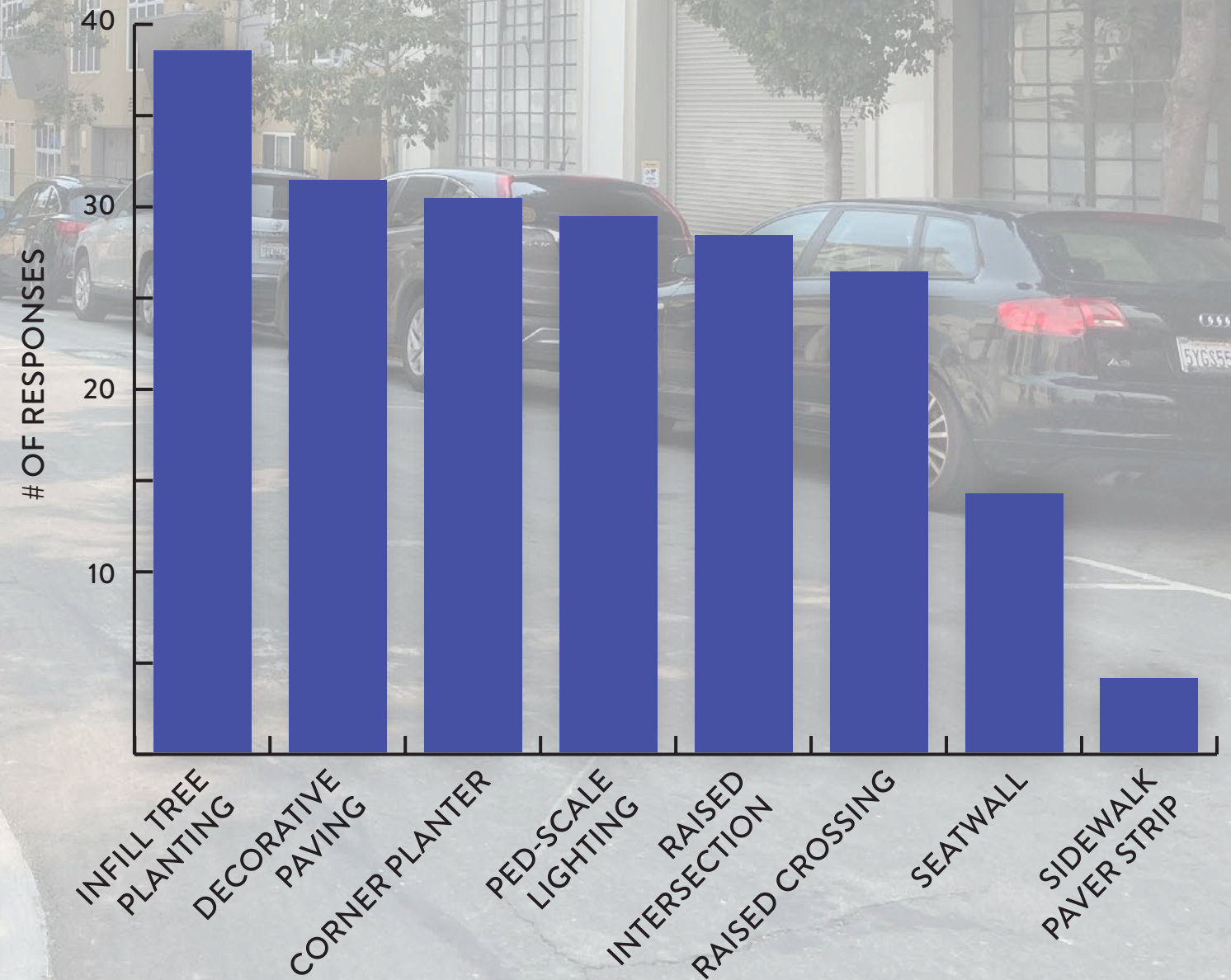
“WHICH CONCEPT WOULD YOU LIKE TO SEE IMPLEMENTED FOR BRADY STREET?” //

CONCEPT B
'RAISED INTERSECTION'
57%



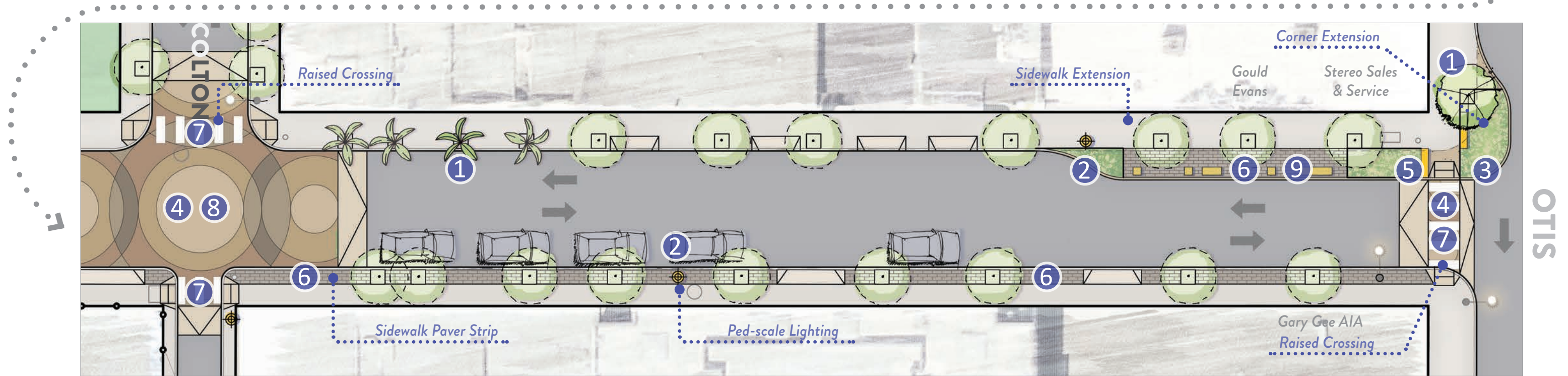
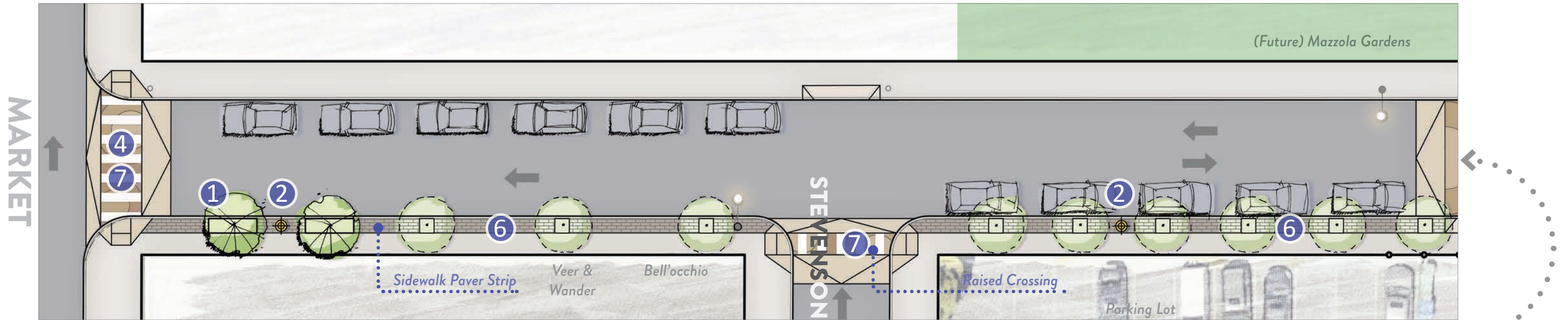
CONCEPT A
'STANDARD ALLEY'
43%

“PLEASE SELECT UP TO THREE ELEMENTS YOU'D LIKE TO SEE INCLUDED IN THE DESIGN FOR BRADY STREET” //



BRADY STREET // PREFERRED CONCEPT PLAN

Market to Otis - a calm, safe, and green neighborhood connector



- 1 INFILL TREE PLANTING
- 2 PED-SCALE LIGHTING
- 3 CORNER PLANTER

- 4 DECORATIVE CONCRETE PAVING
- 5 PLANTER SEAT
- 6 SIDEWALK PAVER STRIP

- 7 RAISED CROSSING
- 8 RAISED INTERSECTION
- 9 SIDEWALK EXTENSION

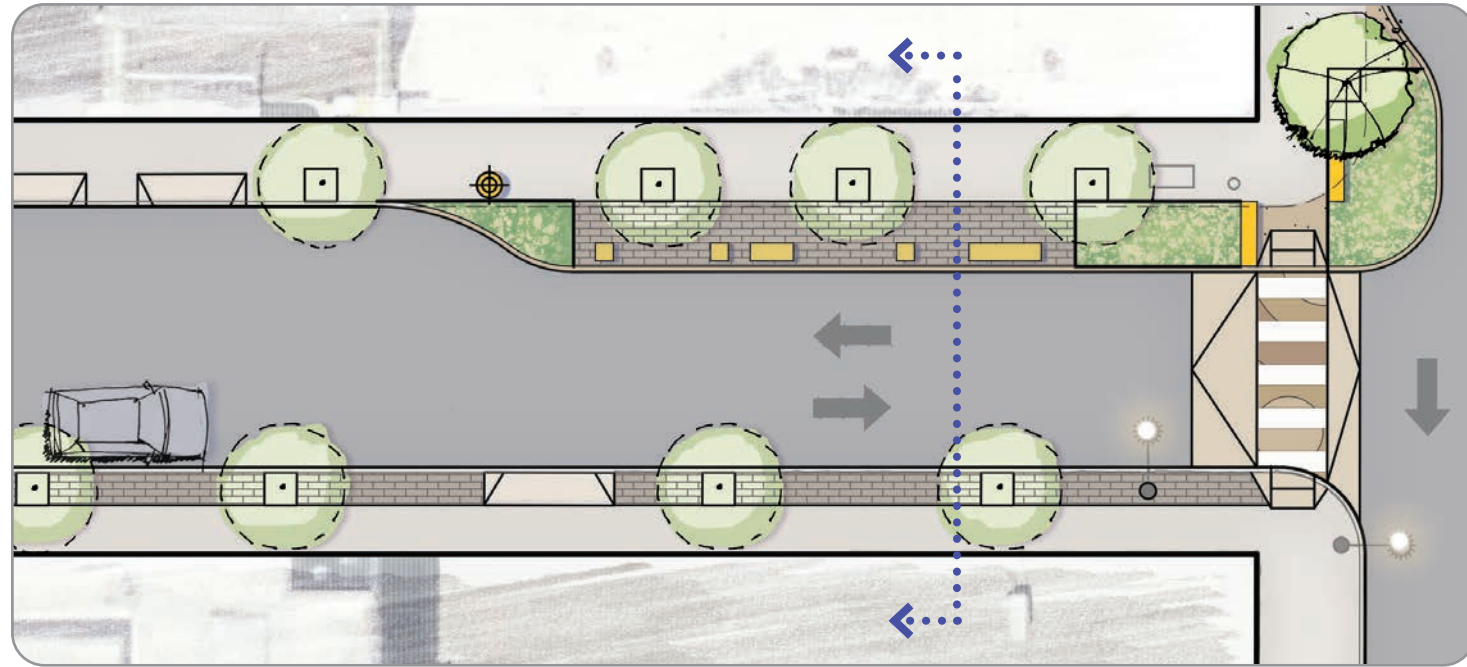
BRADY STREET // PERSPECTIVE

Brady at Colton Street looking South



BRADY STREET // SITE SECTION

Sidewalk Extension at Otis Street



OTIS



BRADY STREET // INSPIRATION

Market to Otis



1 INFILL TREE PLANTING



2 PED-SCALE LIGHTING



3 CORNER PLANTER



4 DECO CONCRETE PAVING



5 PLANTER SEAT



6 SIDEWALK PAVER STRIP



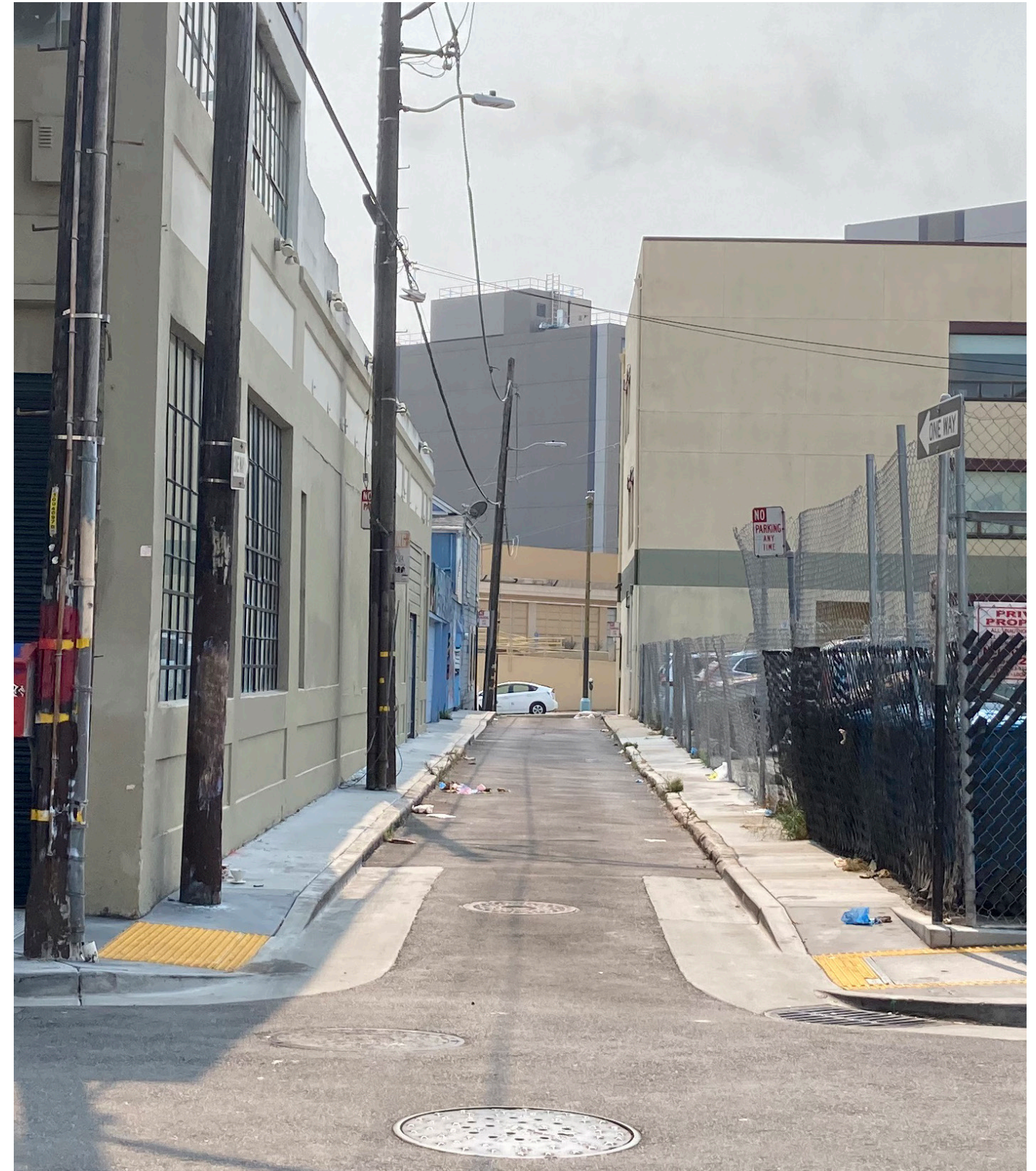
7 RAISED CROSSING



8 RAISED INTERSECTION

COLTON STREET //

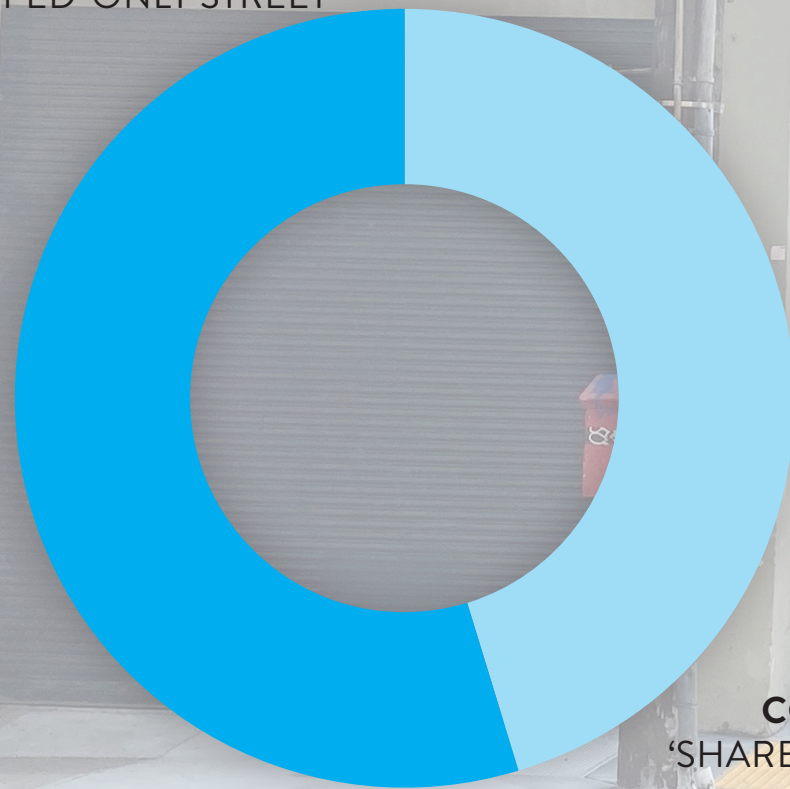
Brady to Gough



COLTON STREET // WHAT WE HEARD

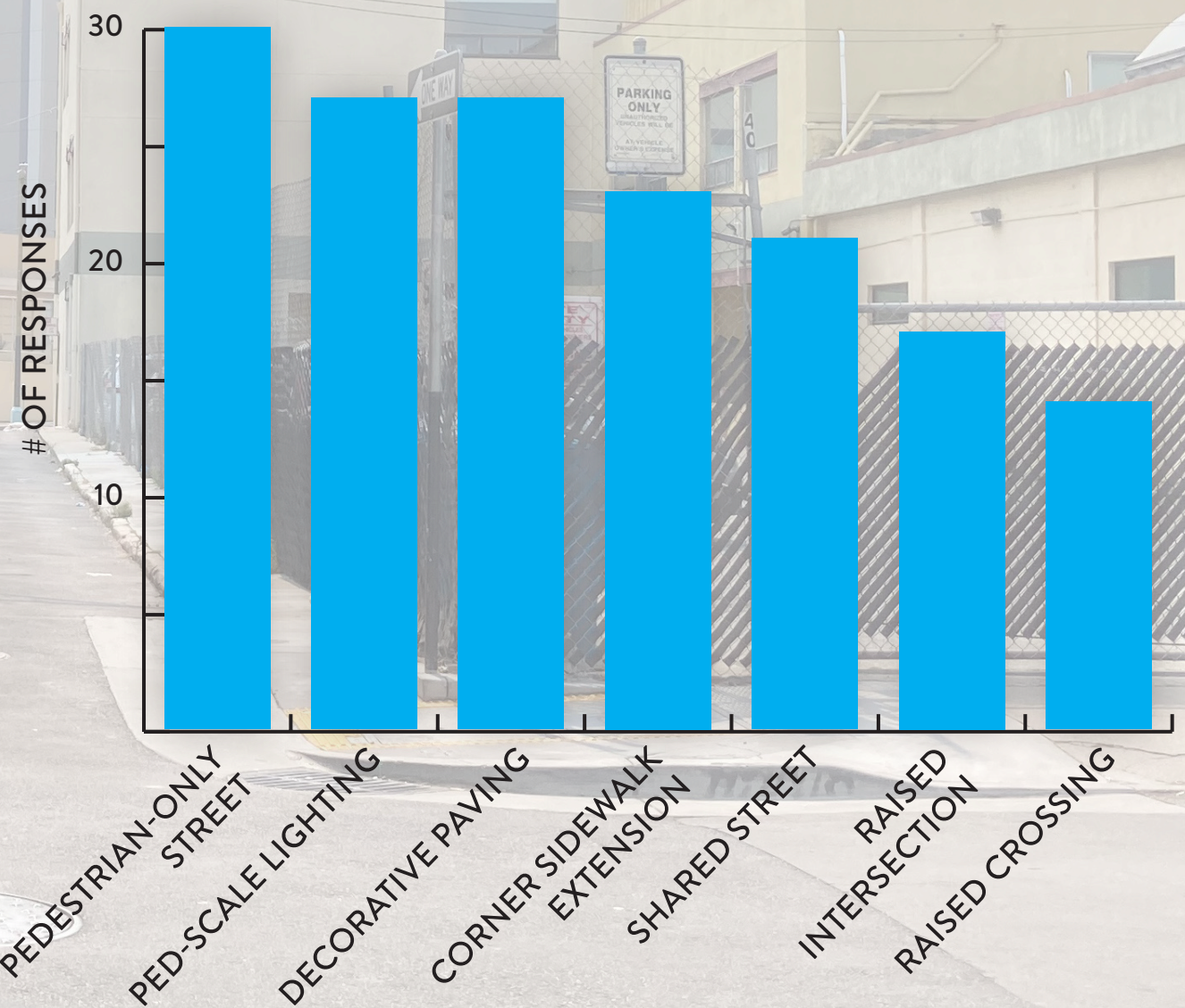
“WHICH CONCEPT WOULD YOU LIKE TO SEE IMPLEMENTED FOR COLTON STREET?” //

CONCEPT B
'PARTIAL PED-ONLY STREET'
55%



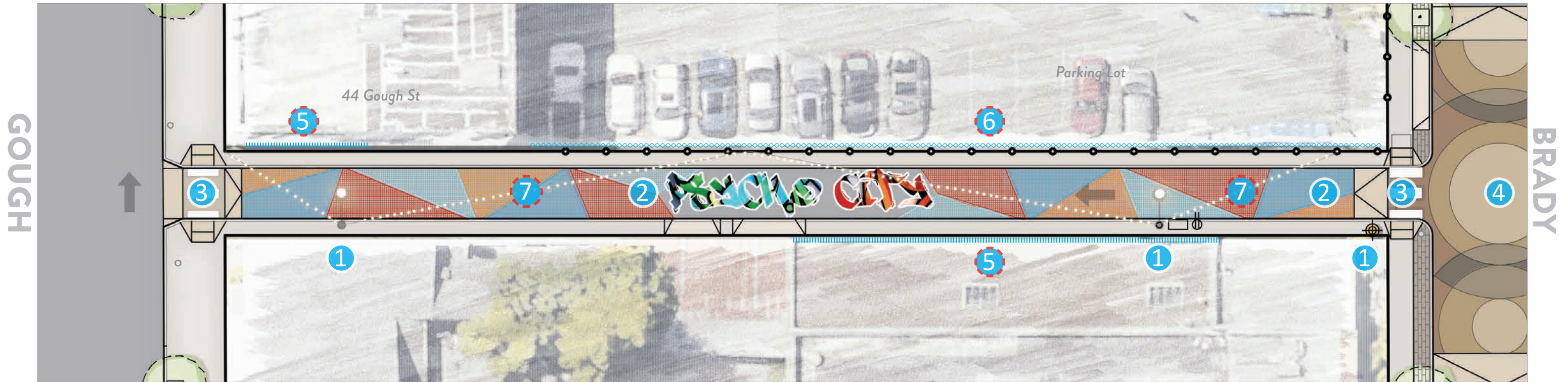
CONCEPT A
'SHARED STREET'
45%

“PLEASE SELECT UP TO THREE ELEMENTS YOU'D LIKE TO SEE INCLUDED IN THE DESIGN FOR COLTON STREET” //



COLTON STREET // PREFERRED CONCEPT PLAN

Brady to Gough - a programmable, pedestrian-oriented link to Brady Block's public space amenities



1 PED-SCALE LIGHTING

2 DECORATIVE ASPHALT TREATMENT
(CONCEPTUAL DESIGN SHOWN)

3 RAISED CROSSING

4 RAISED INTERSECTION

5 POTENTIAL MURAL OPPORTUNITY

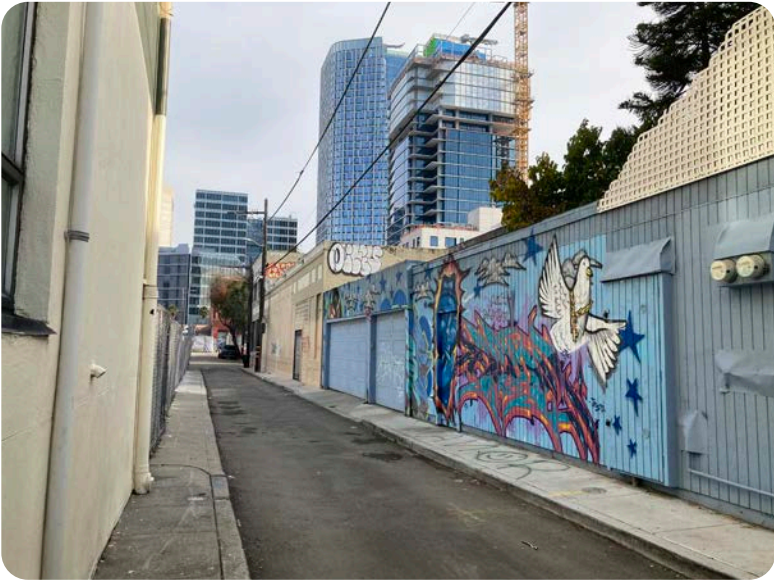
6 POTENTIAL FENCE ART OPPORTUNITY

7 POTENTIAL ALTERNATIVE LIGHTING

COMMUNITY-LED IMPROVEMENTS

COLTON STREET // PERSPECTIVE

Mid-block looking east towards Brady



COLTON STREET // INSPIRATION

Brady to Gough



1 PED-SCALE LIGHTING



2 DECO ASPHALT TREATMENT



3 RAISED CROSSING



4 RAISED INTERSECTION



5 POTENTIAL MURAL



6 POTENTIAL FENCE ART

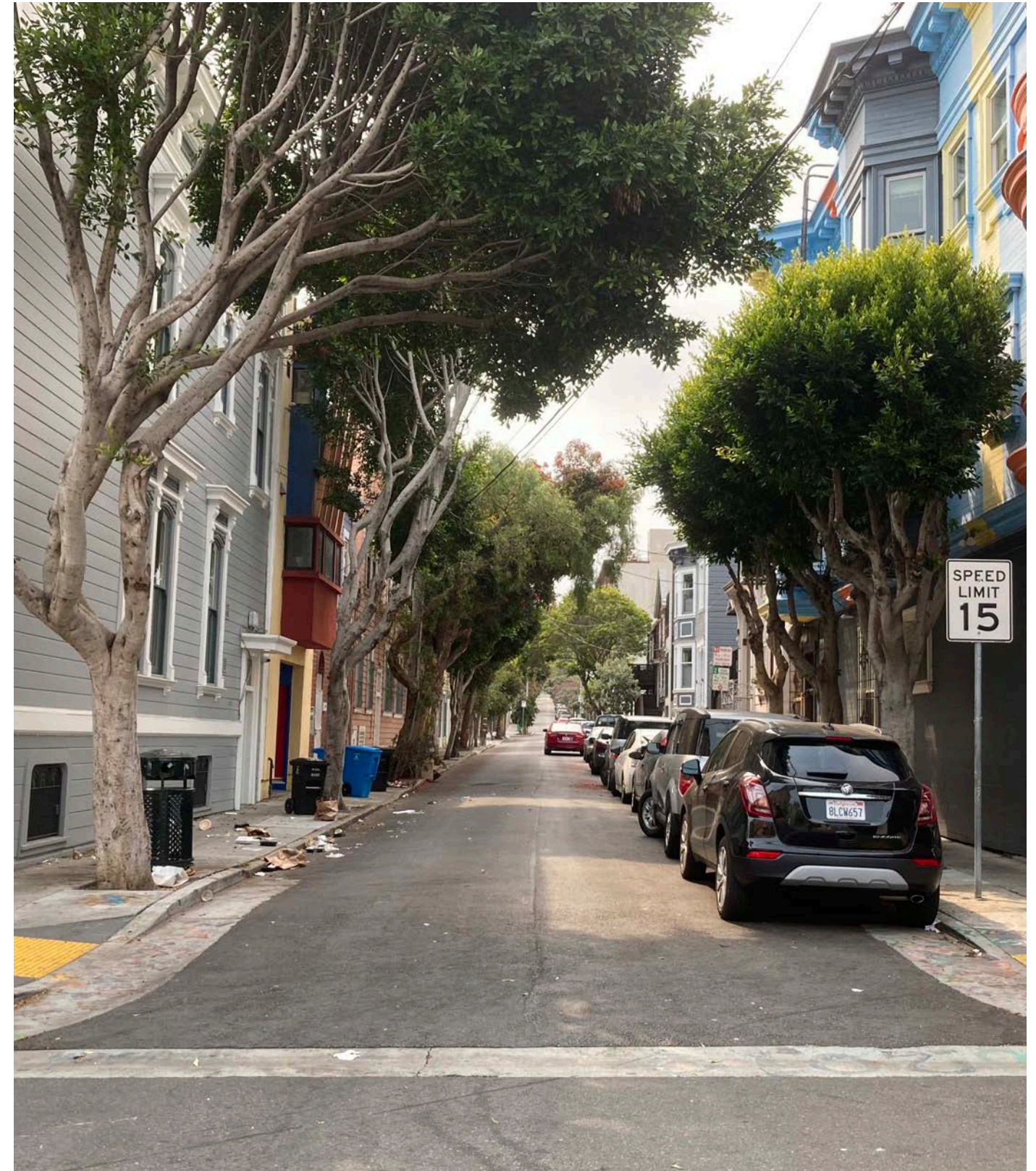


7 POTENTIAL ALT LIGHTING

COMMUNITY-LED IMPROVEMENTS

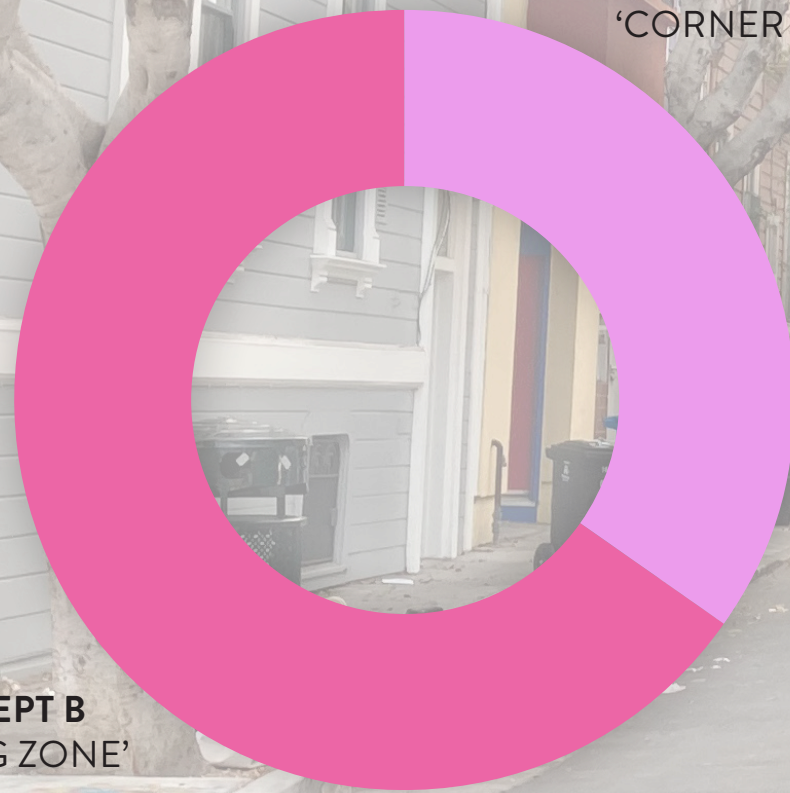
IVY STREET // CONCEPT DESIGN

Laguna to Octavia



IVY STREET // WHAT WE HEARD

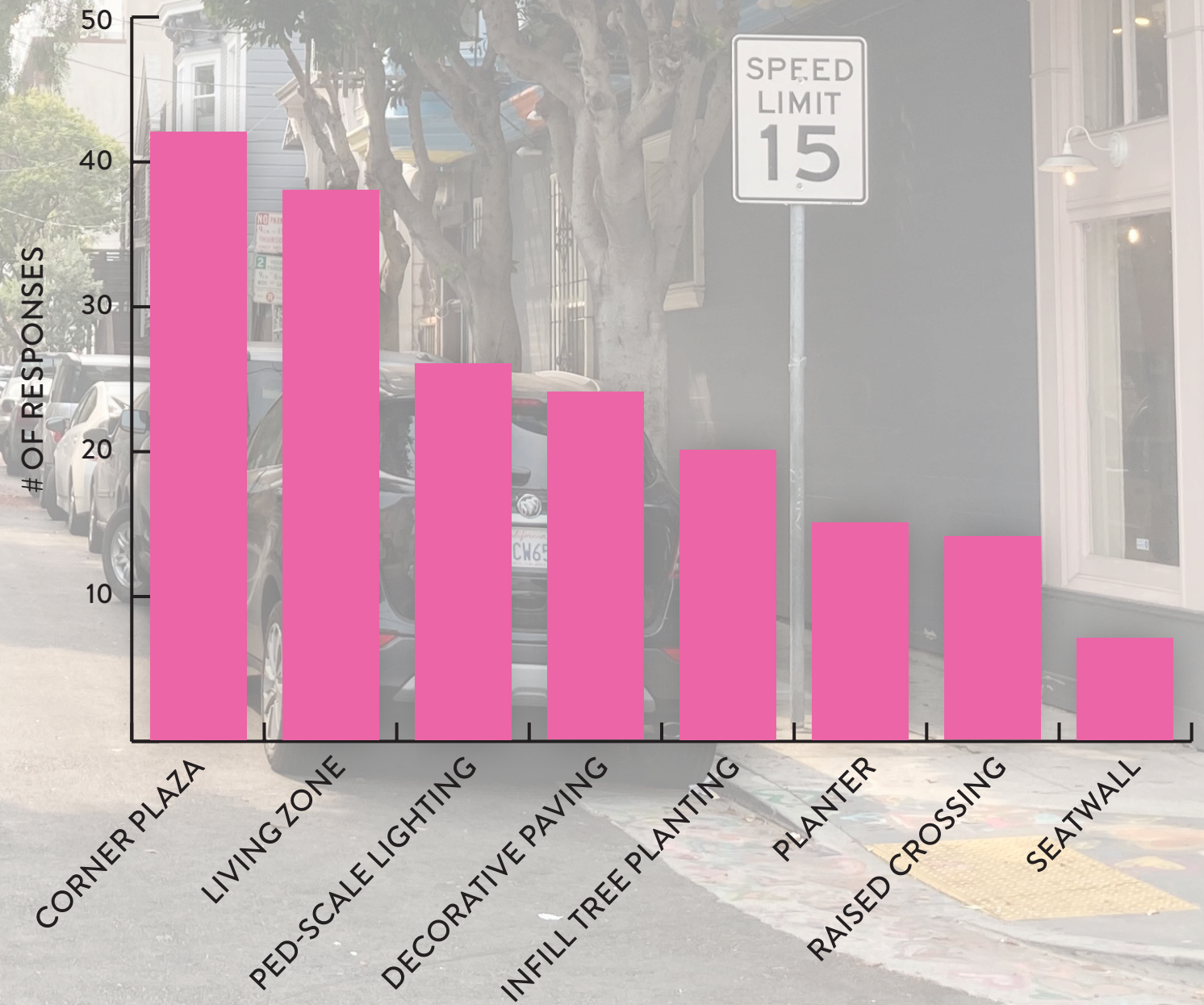
“WHICH CONCEPT WOULD YOU LIKE TO SEE IMPLEMENTED FOR IVY STREET?” //



CONCEPT B
'LIVING ZONE'
65%

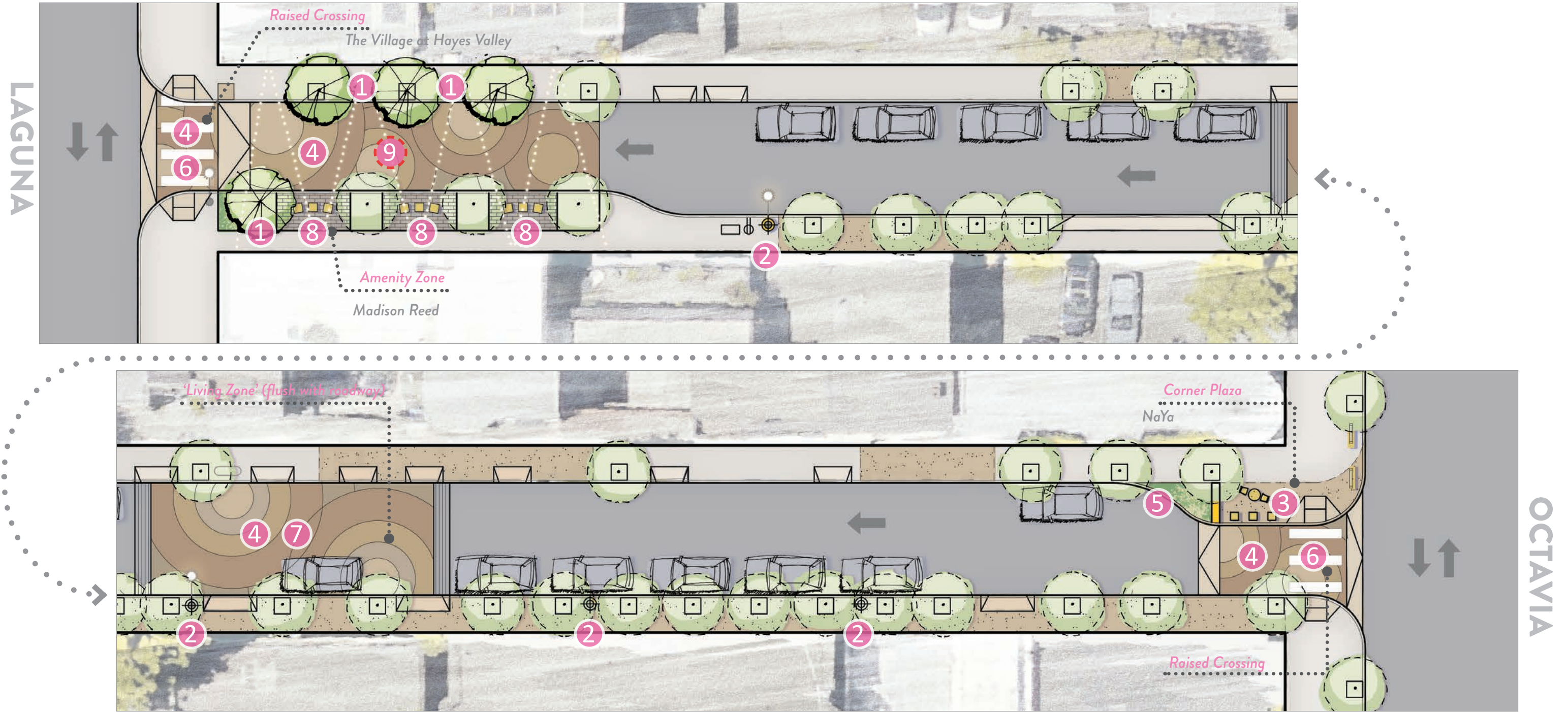
CONCEPT A
'CORNER PLAZA'
35%

“PLEASE SELECT UP TO THREE ELEMENTS YOU'D LIKE TO SEE INCLUDED IN THE DESIGN FOR IVY STREET” //



IVY STREET // PREFERRED CONCEPT PLAN

Laguna to Octavia - a calm and safe neighborhood 'front porch' for interaction and activities



- ① INFILL TREE PLANTING
- ② PED-SCALE LIGHTING
- ③ CORNER PLAZA WITH PLANTER
- ④ DECORATIVE PAVING
- ⑤ PLANTER SEAT
- ⑥ RAISED CROSSING
- ⑦ 'LIVING ZONE'
- ⑧ AMENITY ZONE
- ⑨ POTENTIAL ALTERNATIVE LIGHTING

COMMUNITY-LED IMPROVEMENTS

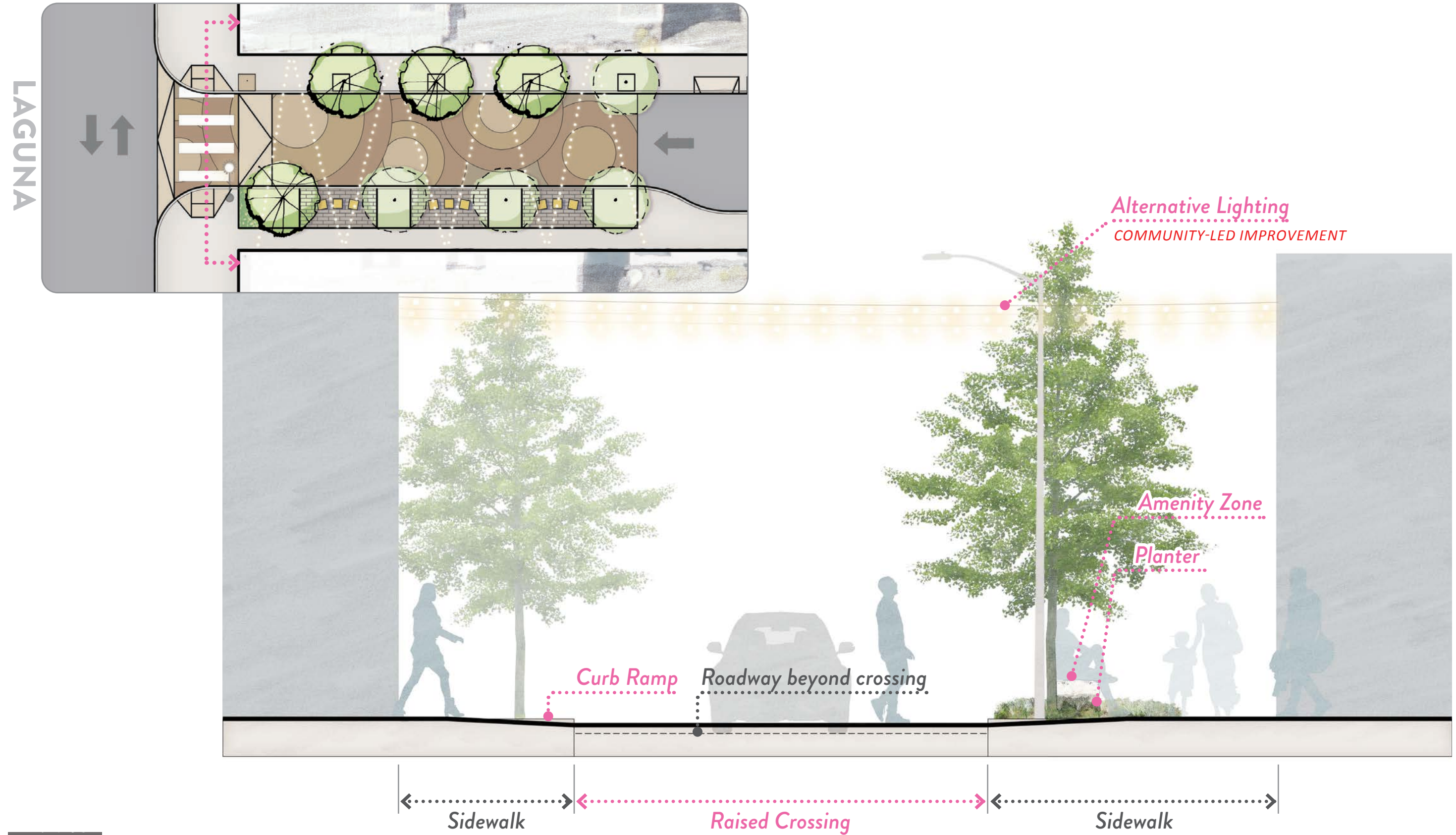
IVY STREET // PERSPECTIVE

At Octavia Street Looking West



IVY STREET // SITE SECTION

Laguna Street Crossing



IVY STREET // INSPIRATION

Laguna to Octavia



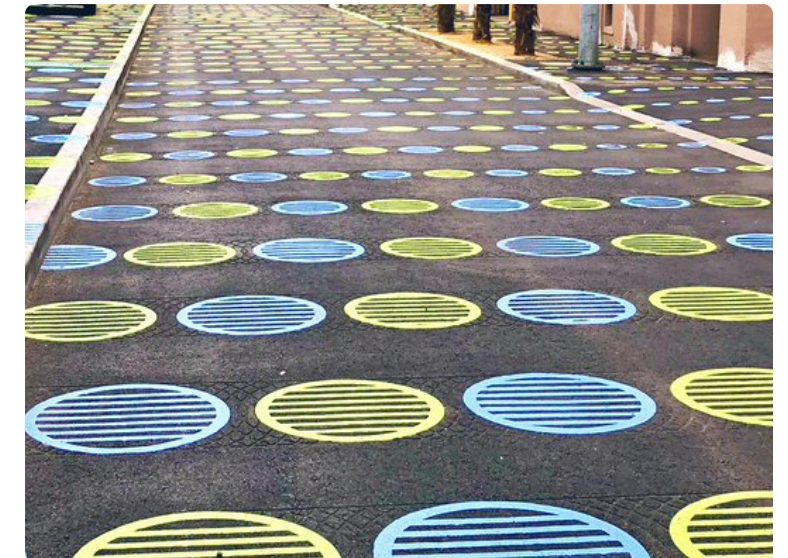
1 INFILL TREE PLANTING



2 PED-SCALE LIGHTING



3 CORNER PLAZA W/PLANTER



4 DECORATIVE PAVING



5 PLANTER SEAT



6 RAISED CROSSING



7 'LIVING ZONE'



8 AMENITY ZONE

COMMUNITY-LED IMPROVEMENTS // PRIVATE PARTNERSHIPS

ALTERNATIVE LIGHTING



FACADE MURALS

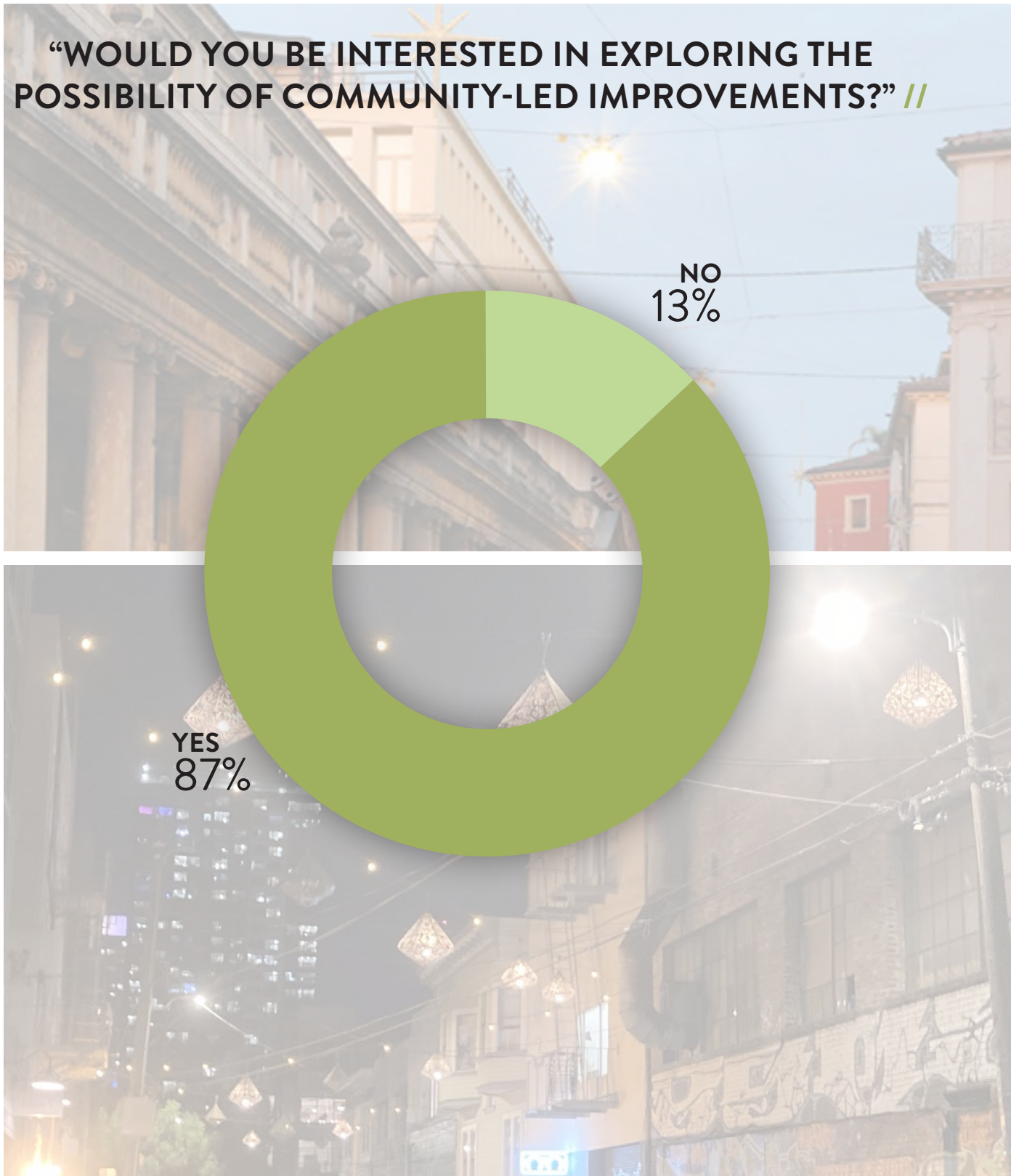


FENCE ART



COMMUNITY-LED IMPROVEMENTS // WHAT WE HEARD

“WOULD YOU BE INTERESTED IN EXPLORING THE POSSIBILITY OF COMMUNITY-LED IMPROVEMENTS?” //



“WHICH COMMUNITY-LED IMPROVEMENTS WOULD YOU BE INTERESTED IN FOR LIVING ALLEYS?” //



COMMUNITY-LED IMPROVEMENTS // RESOURCES

- San Francisco Community Challenge Grant Program //

www.sfccg.org

Program designed to help communities implement small to medium scale improvements that enhance the beauty, community participation, and stewardship of neighborhood public spaces

- San Francisco Board of Supervisors //

www.sfbos.org

Legislative body representing the needs of the people of the City and County of San Francisco

- San Francisco Office of Economic and Workforce Development //

www.oewd.org

Office offering neighborhood-improvement grants and programs

- Fiscal Sponsor/Non-Profit //

Organizations that offer management, administrative and networking services to help build capacity and empowerment within the community. Generally they facilitate the formation of a 'friends-of' group around a project or area to plan, design, implement and steward improvements

An aerial photograph of a public square or plaza. In the center, a group of about ten people are gathered, some standing and some sitting on a bench. To the left, a man in a bright pink shirt is sitting on a bench. The ground is paved with light-colored tiles and has a yellow tactile paving strip. There are trees and a building in the background. A large white rectangular overlay is centered over the image, containing the text "NEXT STEPS //".

NEXT STEPS //

NEXT STEPS

DESIGN //

Thank you for your feedback! Design feedback has been incorporated over the course of the community outreach process. Minor design changes may be incorporated as construction documents are developed

IMPLEMENTATION //

Over the course of the next 5 years, alley designs will be implemented in two phases. We anticipate Ivy Street as Phase 1a, and Brady/Colton Street as Phase 1b. Construction schedules will be communicated to the public as the project progresses

THANK YOU!

MARKET OCTAVIA
LIVING ALLEYS 

sfpublicworks.org/living-alleys

Contact Information

Arun Bhatia, *Project Manager*

arun.bhatia@sfdpw.org | (415) 987-4872

CRITERIA FOR ALLEY SELECTION

ALLEY	STAKEHOLDER INPUT	UPCOMING REPAVING	PCI SCORE	RECENTLY REPAVED	CURRENT DEV'T PROJECTS	GROUND FLOOR CONDITION	STEWARDSHIP & PROGRAMMING	EXISTING CONCEPT PLAN
Ivy (Laguna to Octavia)	42		Excellent	Y		Residential, garages, retail end at Octavia	LagunaHayes HOA	
Brady (Market to Otis)	36		Excellent		1629 Market	Residential, office, retail	Mazzola Gardens	Y Hub
Woodward (Duboce to 14th)	31		Good			Residential, garages		
Stevenson (Duboce to McCoppin)	28		Excellent			Sk8 park, dog park, residential		Y Hub
Rosemont (at 14th)	22		Excellent			Residential, mainly garages		
Ivy (Octavia to Gough)	21		Excellent	Y		Gough end retail, residential walk up and garages		
Colton (Gough to Colusa)	19		Excellent	Y	1629 Market	parking, blank facades Gough to Brady, office	Mazzola Gardens	Y Hub
Elgin Park (McCoppin to Duboce)	17		Excellent			Residential, garages		
Ramona (14th to 15th)	17		Excellent			Residential, garages		
Minna (Lafayette to 11th)	15		Excellent			Residential, live-work, PDR		Y Hub
Lafayette (Mission to Howard)	14		Good / Excellent			Residential, retail ends		Y Hub
Stevenson (Gough to Brady)	12		Excellent		1629 Market	Residential, parking, blank façade, retail	Mazzola Gardens	Y Hub
Stevenson (14th to Clinton Park)	11		Good			blank facades		
Rose (Gough to Market)	11		Excellent			Back of house of retail	Belden type activation with surrounding restaurants	Y Hub
Lily (Octavia to Gough)	9		Excellent	Y		Residential, garages		
Clinton Park (Dolores to Guerrero)	8		Good			Residential, garages		
Linden (Octavia to Laguna)	8		Excellent			Residential, garages, retail end at Laguna		
Lily (Gough to Franklin)	7		Excellent		98 Franklin	Residential, garages, school	International high school?	Y Hub
Lily (Laguna to Octavia)	5	Y	Poor			Residential, garages		
Linden (Gough to Franklin)	5		Excellent	Y		Residential, garages, back of house for retail, sf jazz	SF Jazz?	