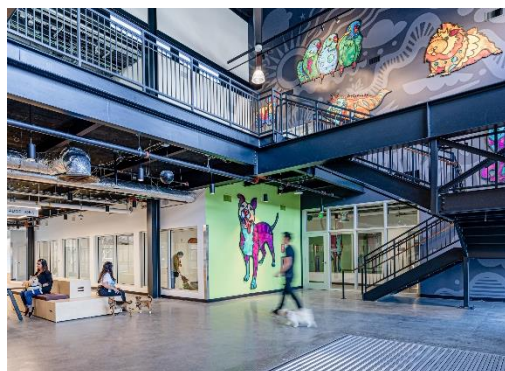


Hallidie Plaza Accessibility Improvements

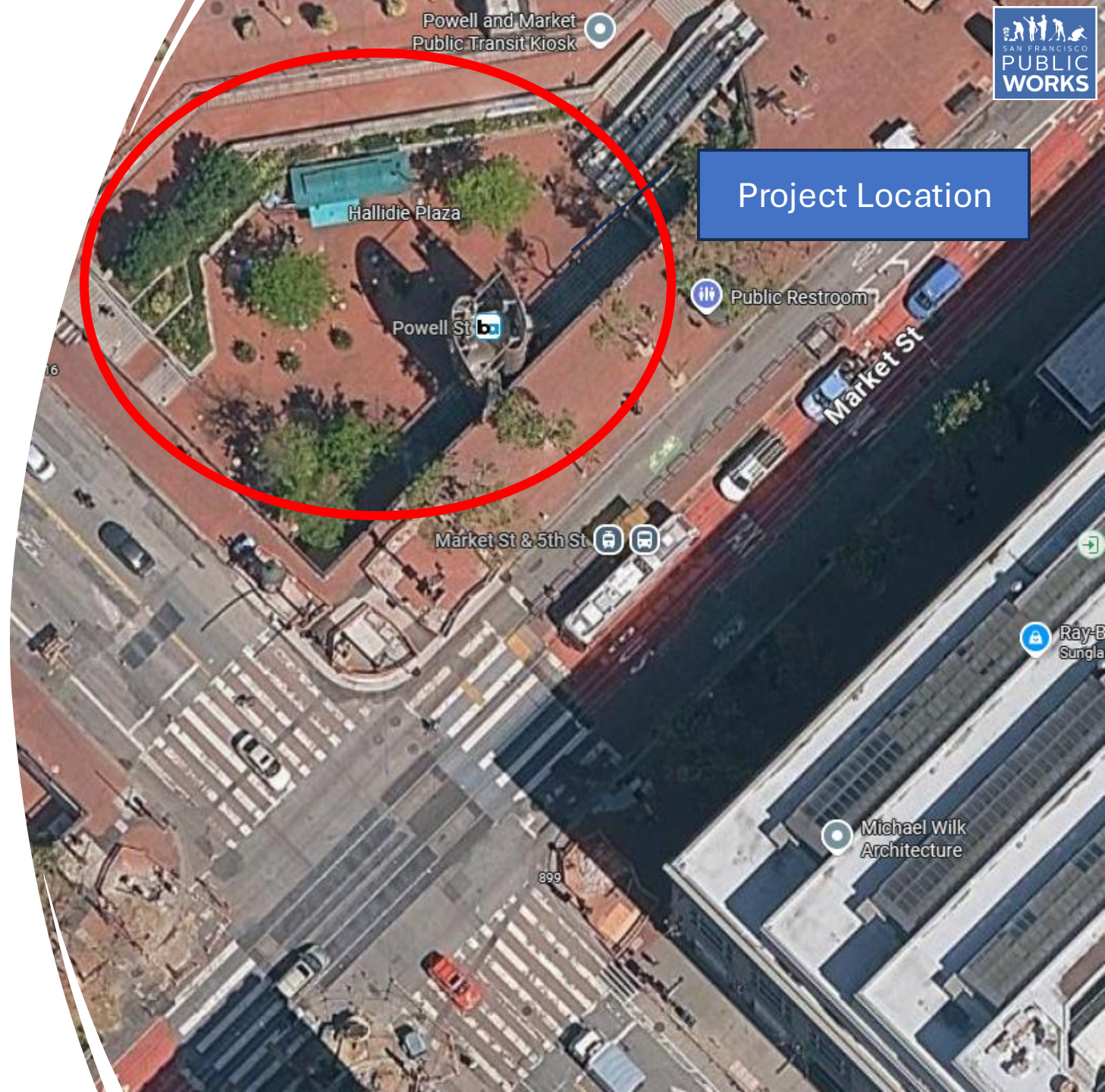
Anastastia Haddad & Christine Hunt

July 23, 2025



First Open House Community Meeting Agenda:

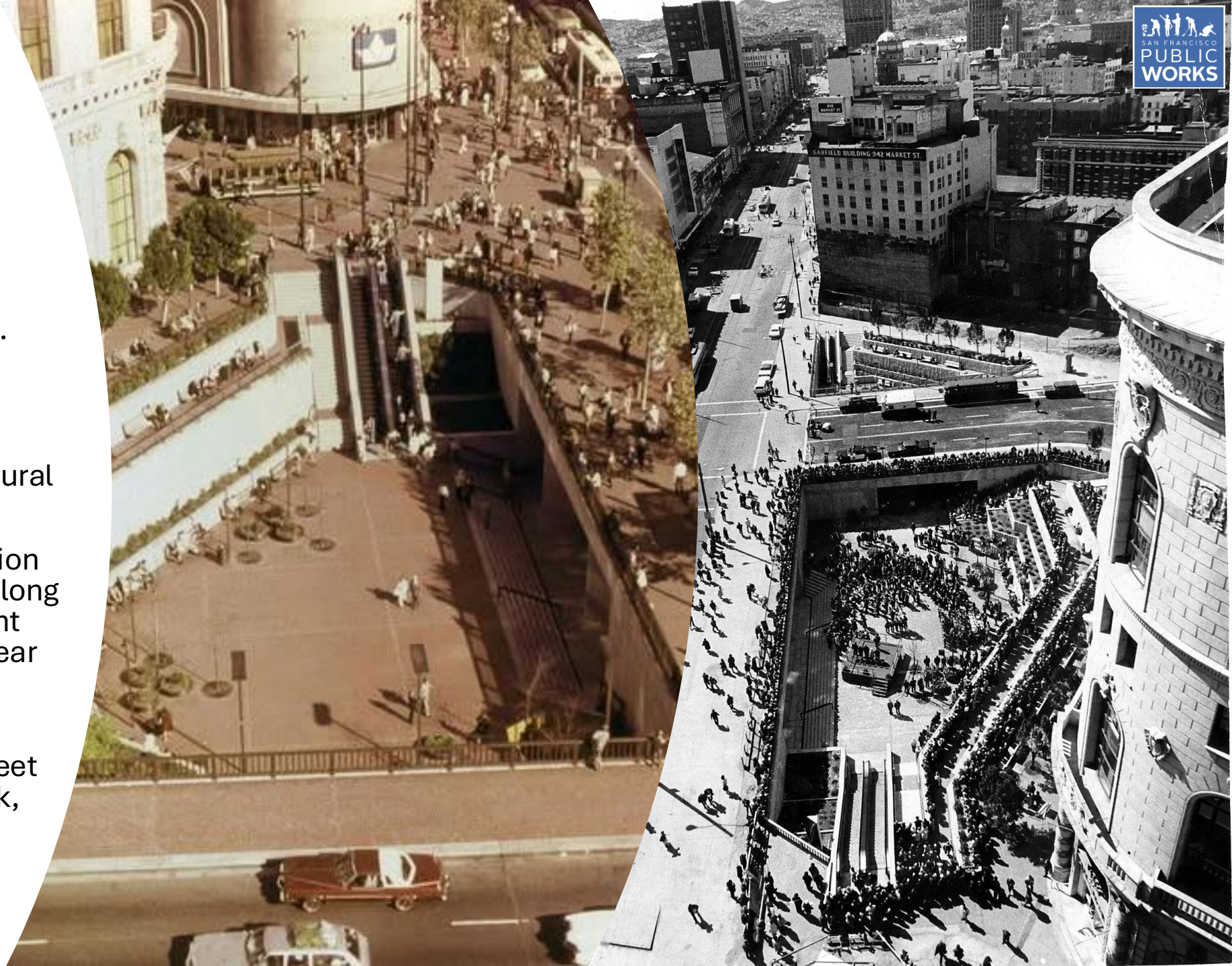
- Introductions
- Hallidie Plaza History
- Existing Conditions
- Hallidie Plaza Accessibility Improvements Project
 - Funding
 - Project Goals
 - Design Considerations
 - Stakeholder Considerations
 - Proposed Schedule
- Questions & Comments



Hallidie Plaza

History

- Opened in 1973
- Named after Andrew Smith Hallidie, who developed the world's first cable car system.
- Designed by Lawrence Halprin, John Carl Warnecke, and Mario Ciampi in modernist/Brutalist architectural style.
- Key BART/Muni Powell St station was one of the first stations along Market St and serves as a front doorstep to San Francisco, near attractions and shopping districts.
- Sunken Plaza is 20' below street level, with terracing, and brick, bronze and granite elements.



Existing Conditions



Elevator obstructing view



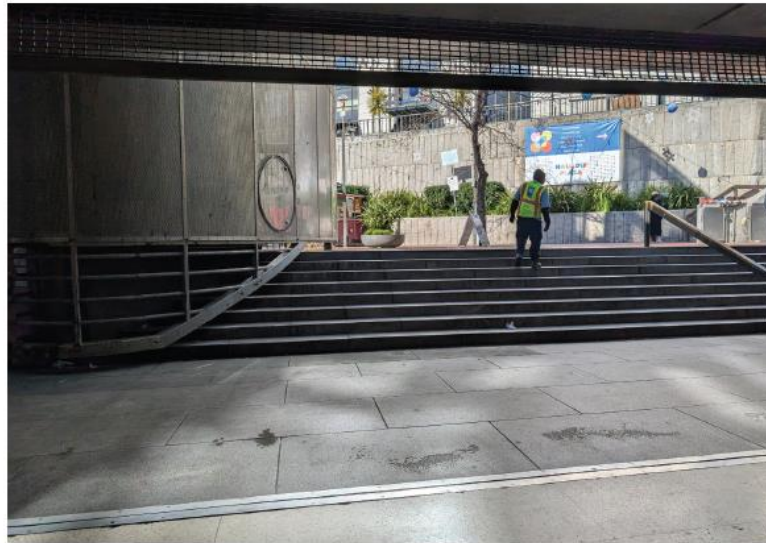
Pigeons



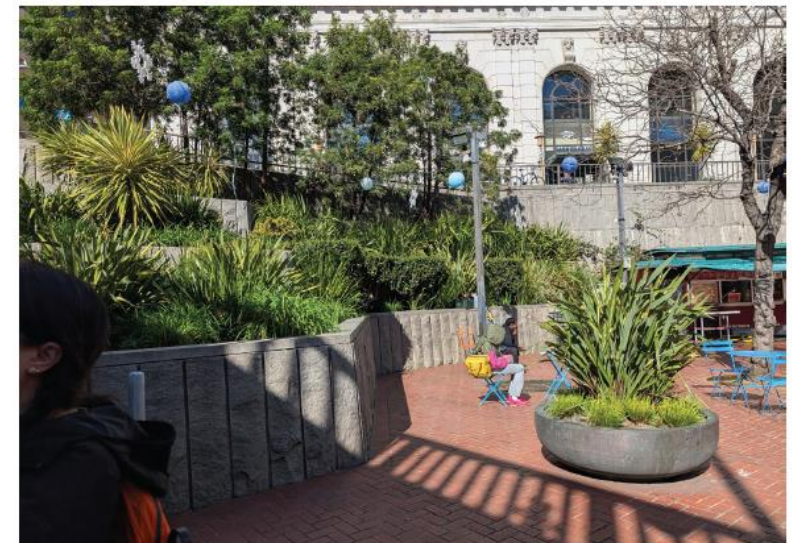
Elevator obstructing view



Cafe with seating



Plaza entry from Powell Street Station



Planted terraces

Existing Conditions



Michael Willis Elevator

- Constructed in 1997
- Connects street level to plaza and BART station levels
- Accessibility point into the plaza
- Maintenance challenges
- Decommissioned in April 2025



Hallidie Plaza Accessibility Project: Funding

- November 2024 Prop B Ballot Measure – Healthy, Safe and Vibrant San Francisco Bond - \$390M
- \$41M is dedicated to “improvements to civic spaces to provide welcoming gathering spaces for the public”.
- Hallidie Plaza was specifically included in the bond measure under this category and is receiving a total of \$9M for design & construction.
- The San Francisco Office on Disability and Accessibility (ODA), formerly known as Mayor's Office on Disability (MOD) and San Francisco Curb Ramp Program partnered to submit a Capital Planning Request to bring accessibility improvements to Hallidie Plaza.



Project Goals

Primary Priority

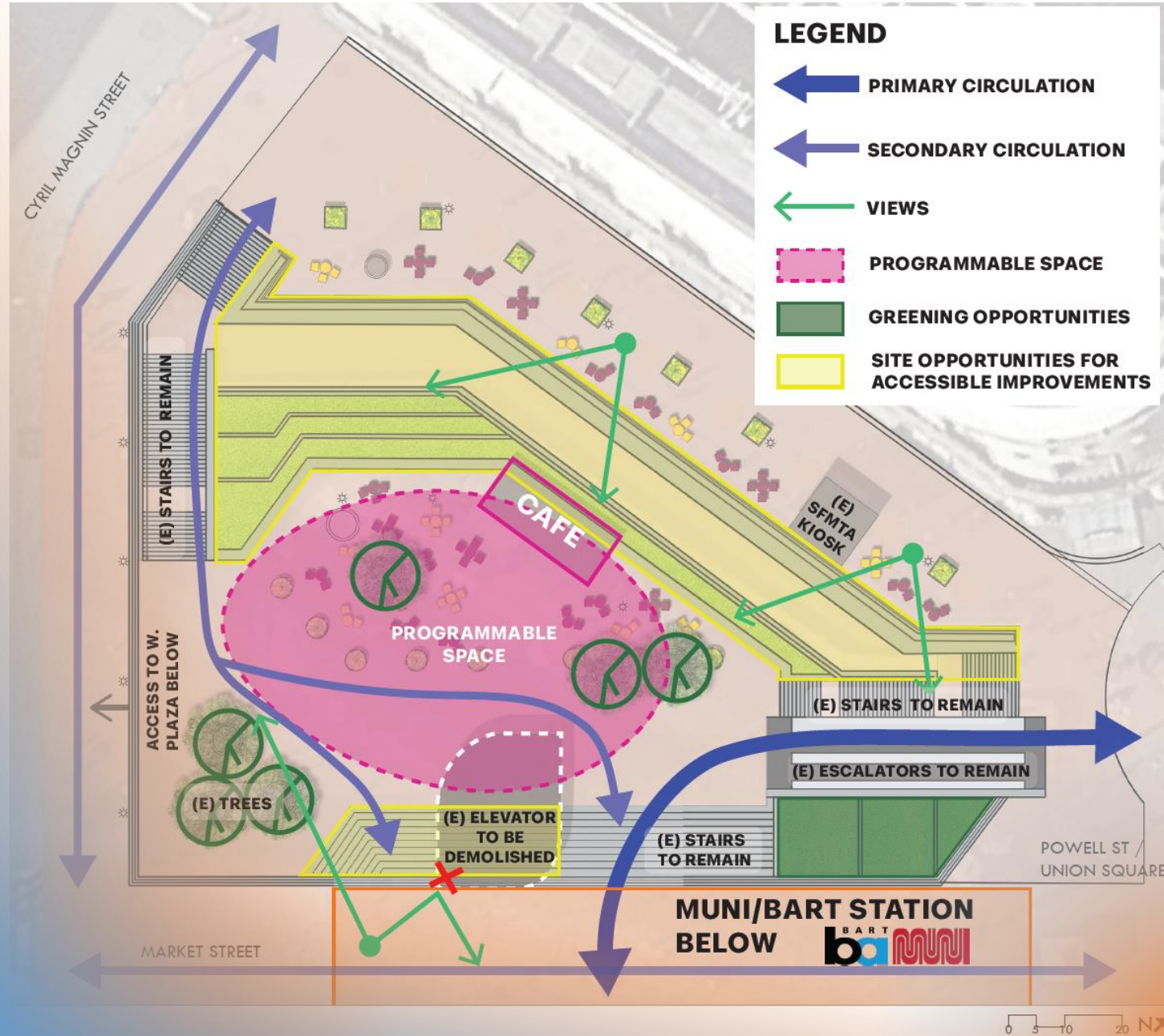
Improve accessibility to Hallidie Plaza!

Includes:

- Permanent removal of the decommissioned Market Street elevator.
- Construction of a main ramp connecting Street level to Plaza level.
- Construction of a second smaller ramp connecting Plaza level to the Bart/Muni entrance.



Design Considerations



1. Improve accessibility and access to the plaza from street level and Muni/Bart stations
2. Design for a welcoming, safe and vibrant public space
3. Ensure the plaza remains sociable and flexible in accommodating programs/activities
4. Consider operations and maintenance as it relates to design changes in plaza
5. Honor the legacy of the plaza design and ensure its integrity remains alongside new accessible features
6. Recognize Hallidie Plaza as a main entry to San Francisco

Stakeholder Considerations



SAN FRANCISCO
HUMAN SERVICES AGENCY

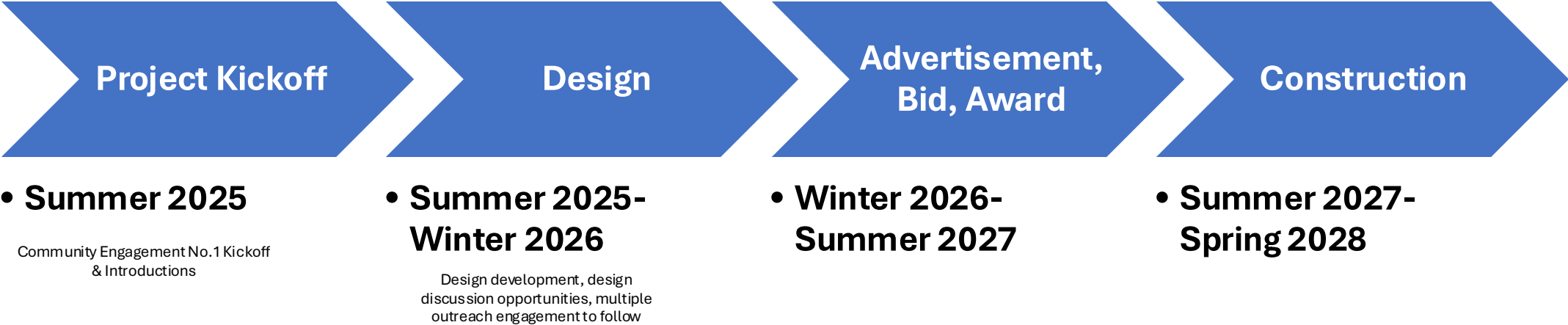


**UNION
SQUARE**
ALLIANCE



Project Partner's

Proposed Schedule



More public engagement and design discussion opportunities to come!

Thank you!

Contact Information:

Anastastia.Haddad@sfdpw.org

Christine.Hunt@sfdpw.org

Project Website:

<https://sfpublicworks.org/HallidiePlaza>



Questions?
