



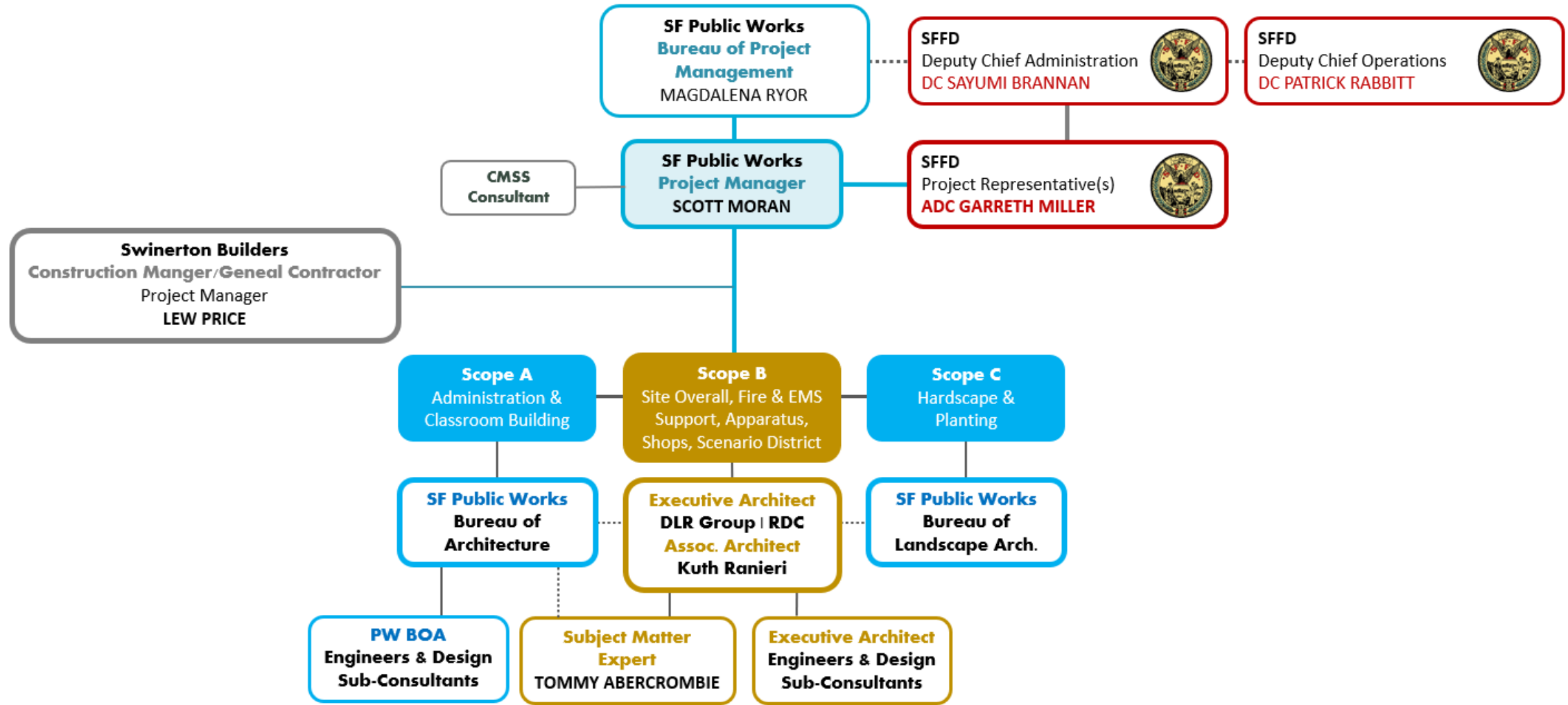
# SFFD DIVISION OF TRAINING – PROJECT OVERVIEW

JANUARY 2026

# **SFFD Division of Training**

## **Project Overview**

# Project Overview – Team



# Project Overview – Program Summary

Site Location	1236 Carroll Avenue, San Francisco
Site Area	8.02 Acres
Total Buildings	10
Parking	116 Spaces

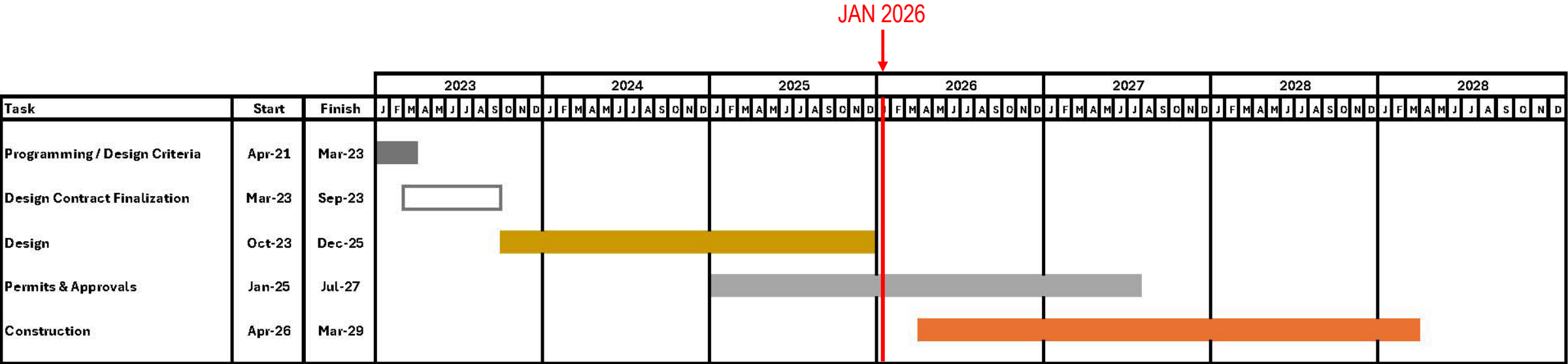
## **Building Area by Type**

Occupied Buildings	59,664 SF
Unoccupied Training Structures	45,028 SF

<b>Total Approx. Building Area</b>	<b>104,692 SF</b>
------------------------------------	-------------------



# Project Overview – Schedule



# Project Overview – Consolidation of Two Existing Sites





# Project Overview – Location within Bayview Neighborhood





# Project Overview – Adjacencies & Planned Developments





# Project Overview – Site Adjacencies & Elevations



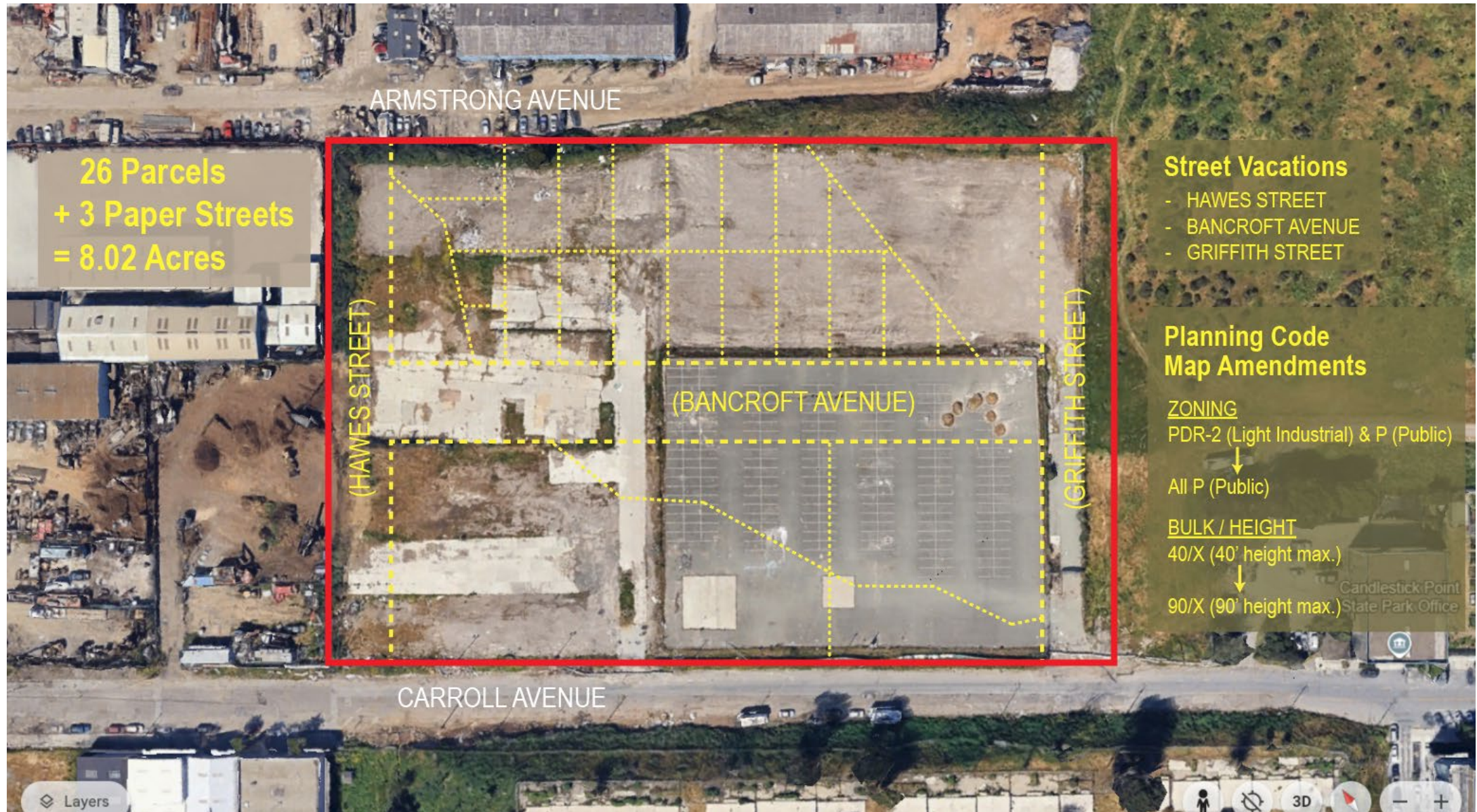


# Project Overview – Site Adjacencies & Elevations





# Project Overview – Site Components





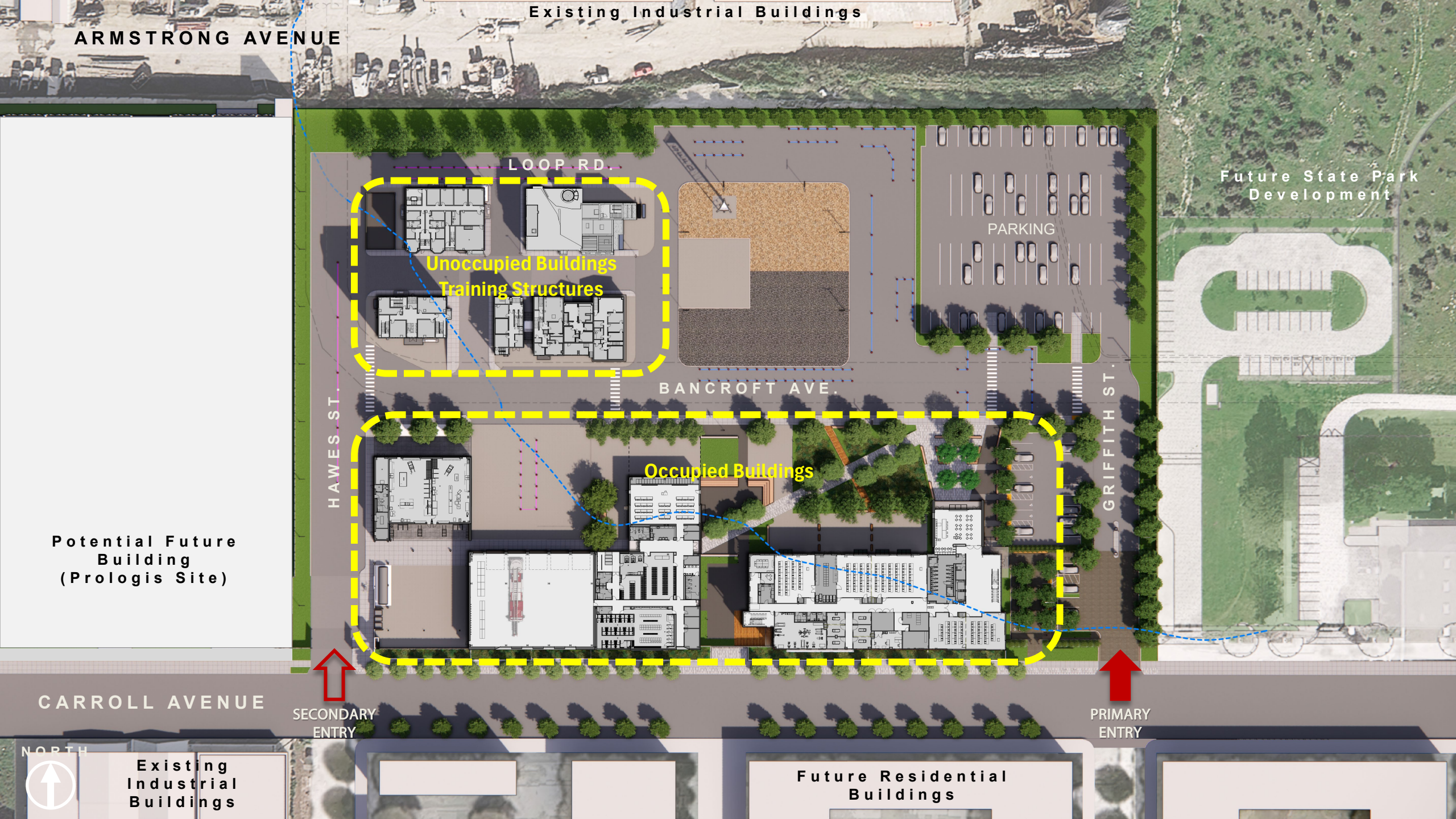
# Project Overview – Existing Utilities (PG&E & SFPUC)





# **SFFD Division of Training**

## **Project Design**



ARMSTRONG AVENUE

Existing Industrial Buildings

LOOP RD

Unoccupied Buildings  
Training Structures

PARKING

Future State Park  
Development

BANCROFT AVE.

Occupied Buildings

HAWES ST.

GRIFFITH ST.

Potential Future  
Building  
(Prologis Site)

CARROLL AVENUE

SECONDARY  
ENTRY

PRIMARY  
ENTRY

NORTH

Existing  
Industrial  
Buildings

Future Residential  
Buildings



# Aerial View Looking North





# Aerial View Looking Northeast







Aerial View Looking Southwest



# Aerial View Looking Southeast (Administration Building)





# Aerial View Looking Southeast (Scenario District – Training Structures)







Aerial View of Main Entrance



# Main Entrance – Pedestrian Access





# Main Entry – Administration Building





# Carroll Avenue – Looking West



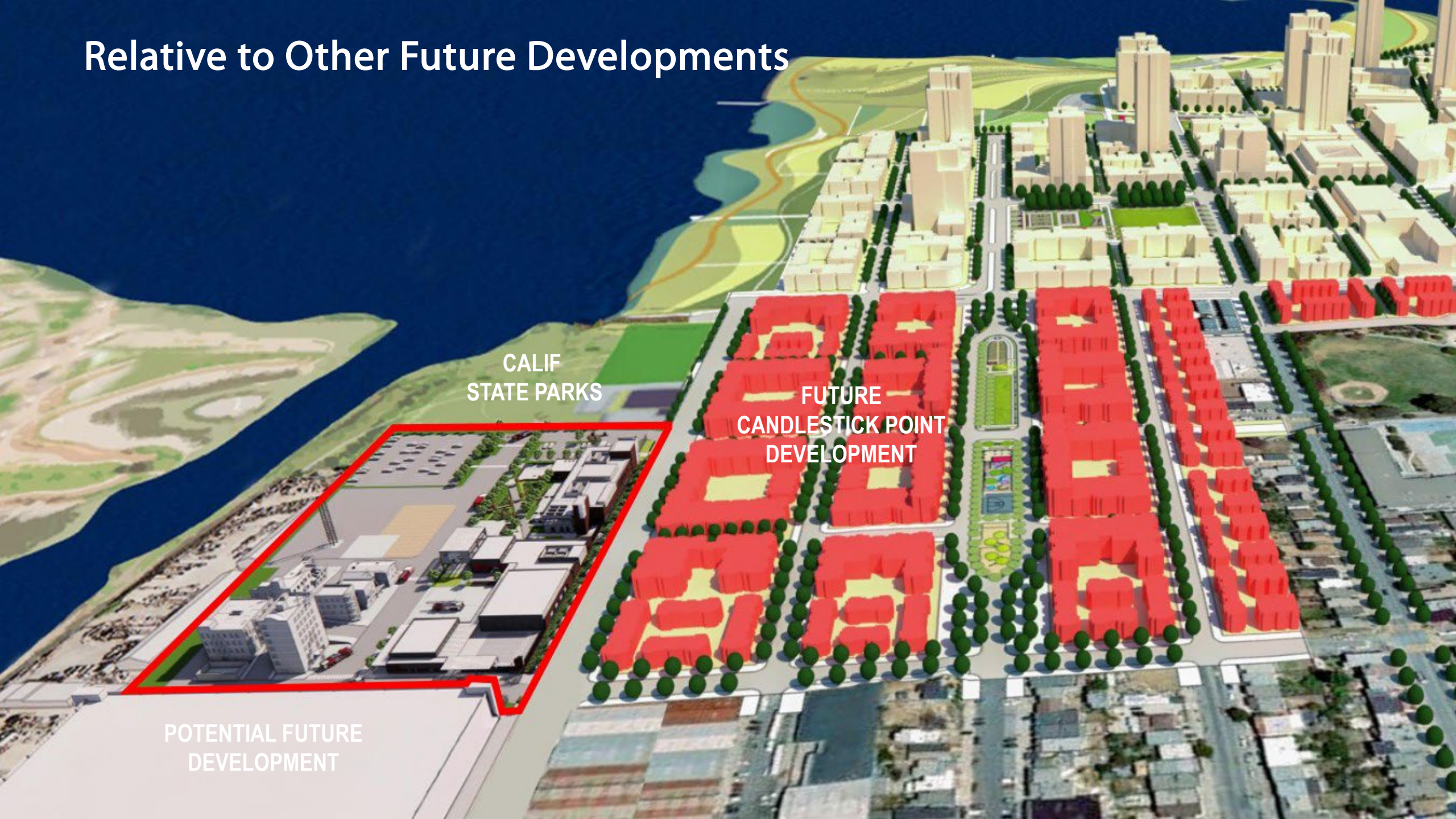


# Carroll Avenue – Looking East





# Relative to Other Future Developments



CALIF  
STATE PARKS

FUTURE  
CANDLESTICK POINT  
DEVELOPMENT

POTENTIAL FUTURE  
DEVELOPMENT



# **SFFD Division of Training Questions?**