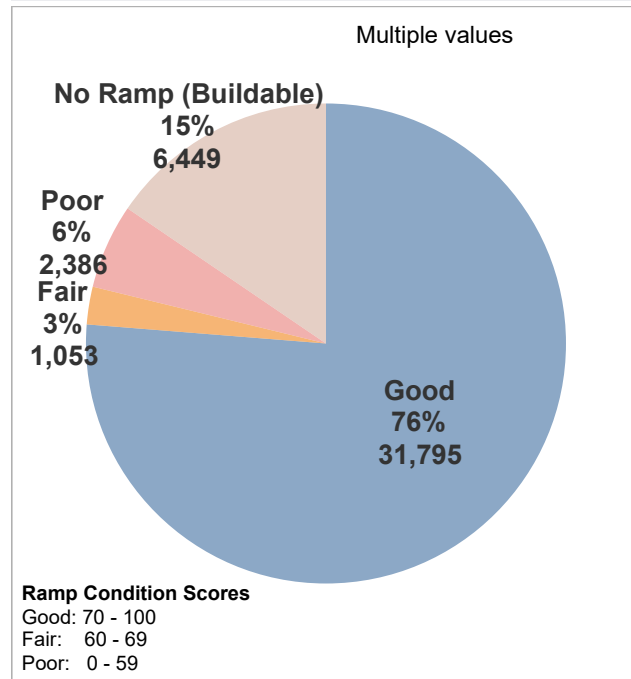
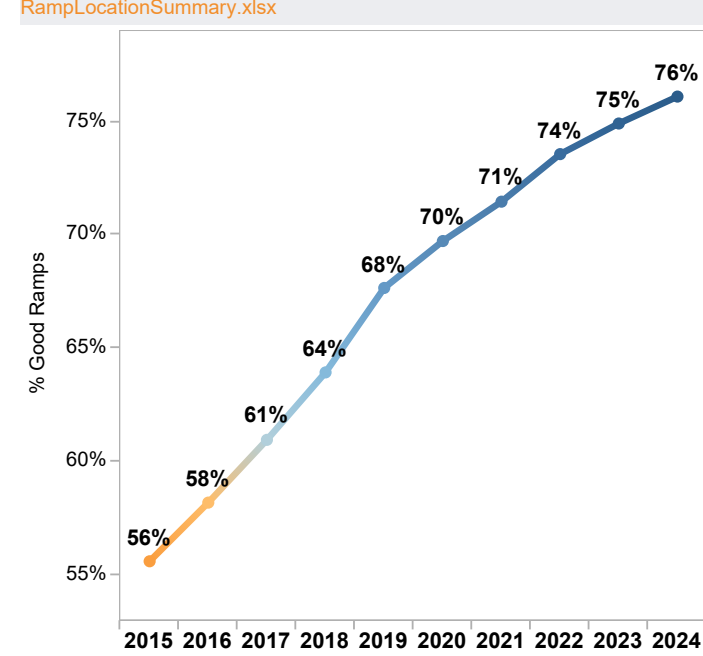


Curb Ramp Locations and Condition Source CRIS viewAllRamps except as noted

41,683 Curb Ramp Locations



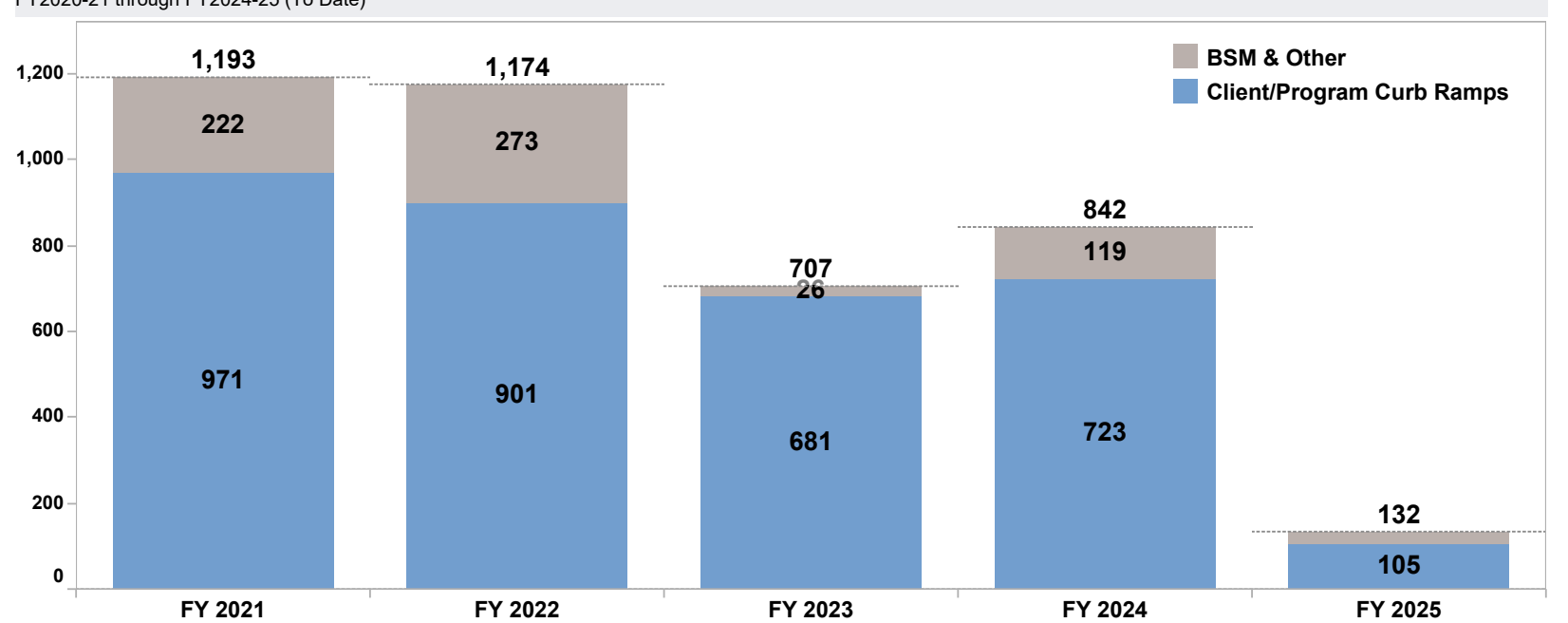
Buildable Locations w/ Ramps in Good Condition RampLocationSummary.xlsx



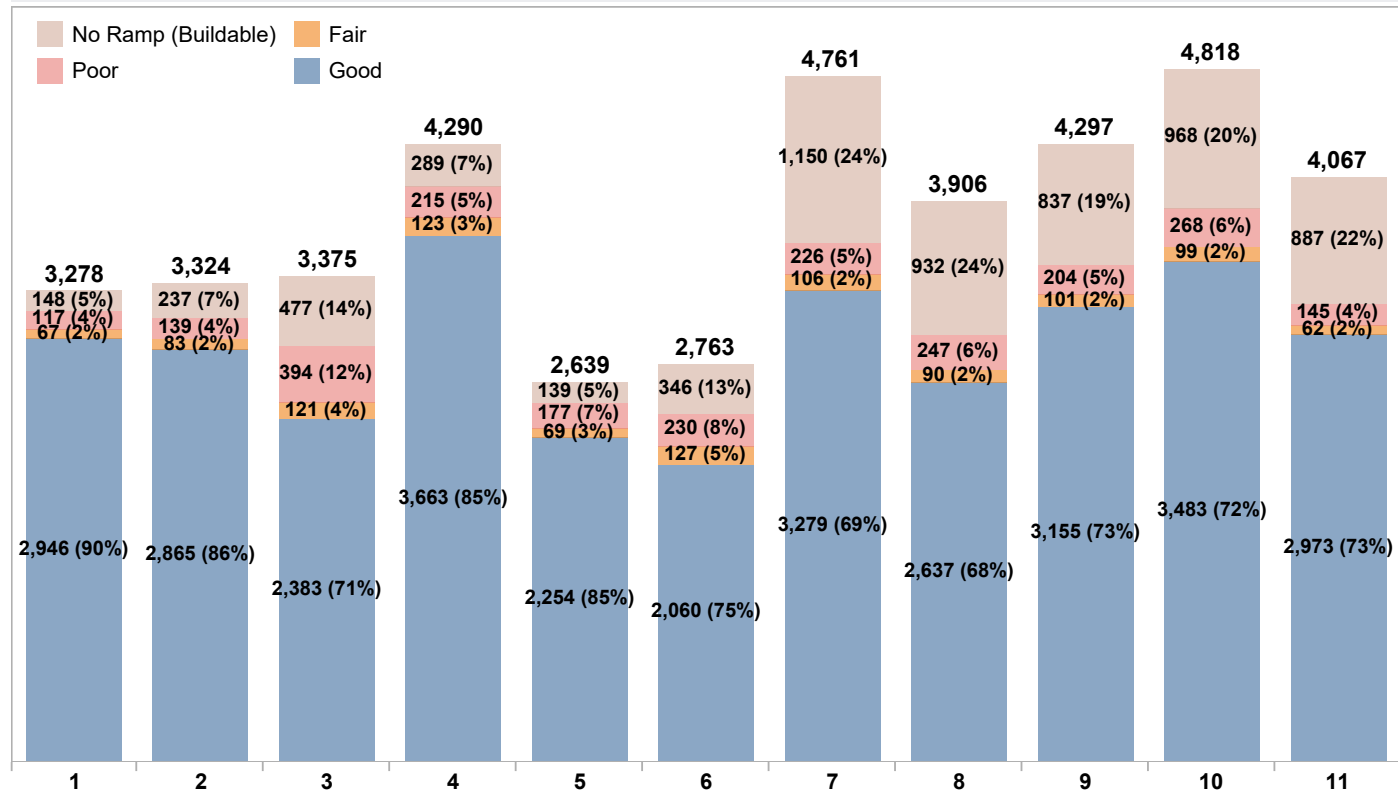
Curb Ramps Constructed Source CRIS viewCRProjInfo_all except as noted

Curb Ramps Constructed by Fiscal Year FY2020-21 through FY2024-25 (To Date)

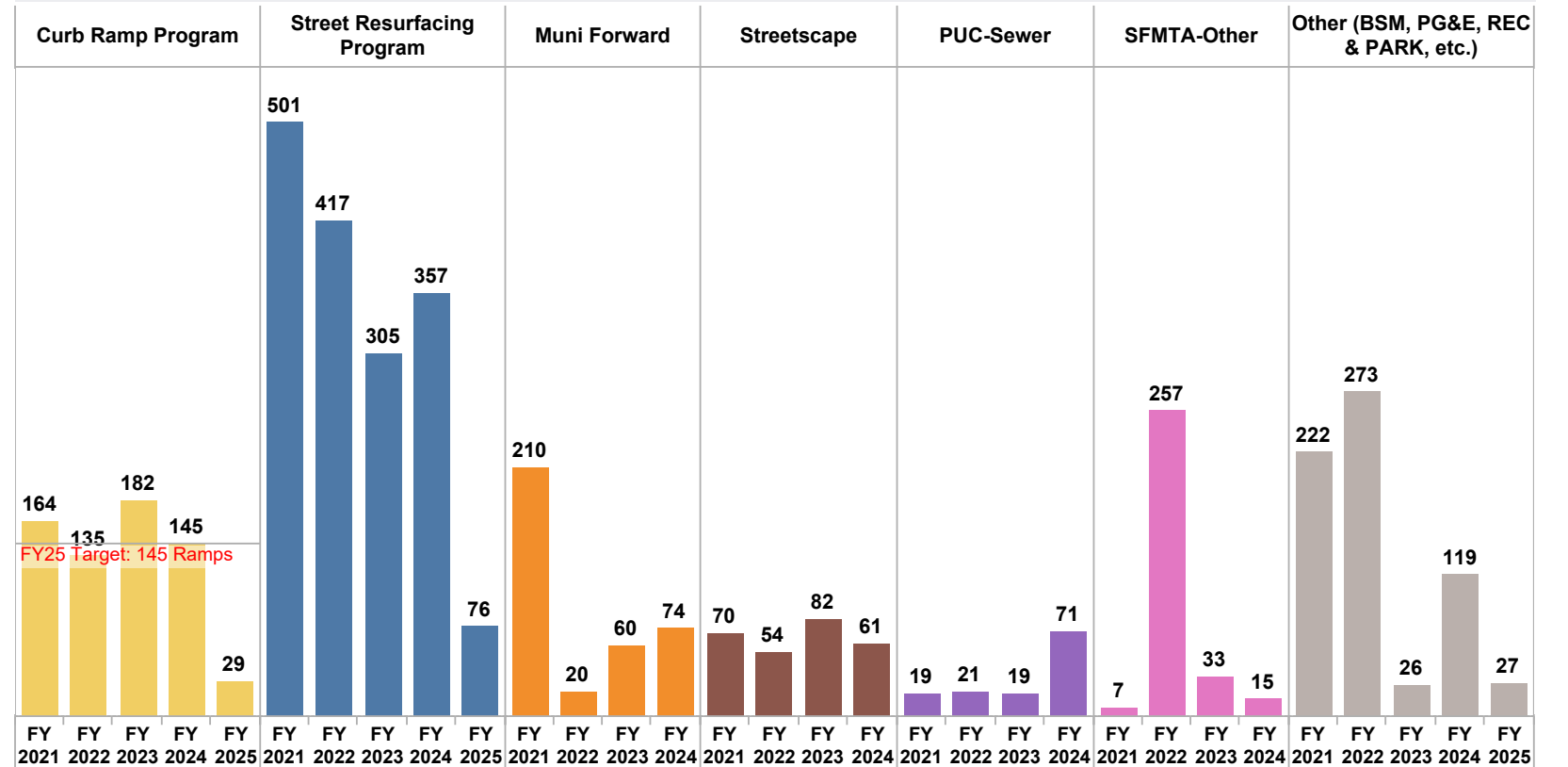
4,051 Curb Ramps



Curb Ramp Need by District (Buildable Locations Only)



4,051 Curb Ramps Constructed by Client or Program FY2020-21 through FY2024-25 (To Date) Source viewCRProjInfo_Statistics



Curb ramps completed in the current fiscal year may also be funded by budgets from prior fiscal years. Contracts awarded within the current fiscal year may be funded by budgets from prior fiscal years and completion may roll into the next fiscal year.

Difficult locations remain high priority, but will cost more to complete due to conflicts with sub-sidewalk basements, major utilities, difficult topography and other issues.

