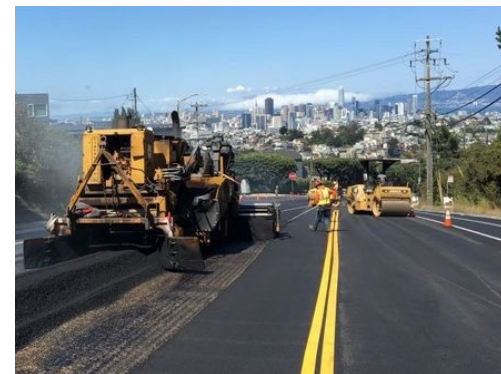
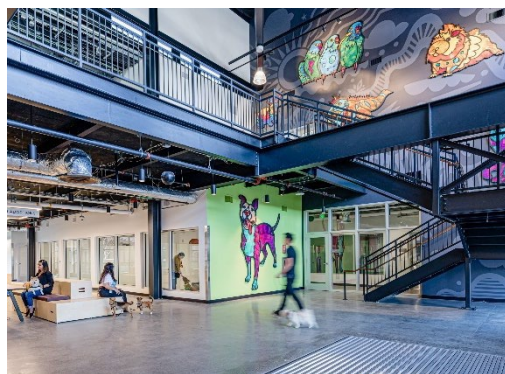


April 9, 2026

# Zuckerberg SF General (ZSFG) Campus Project Annual Updates

Joe Chin, PE  
Program Manager

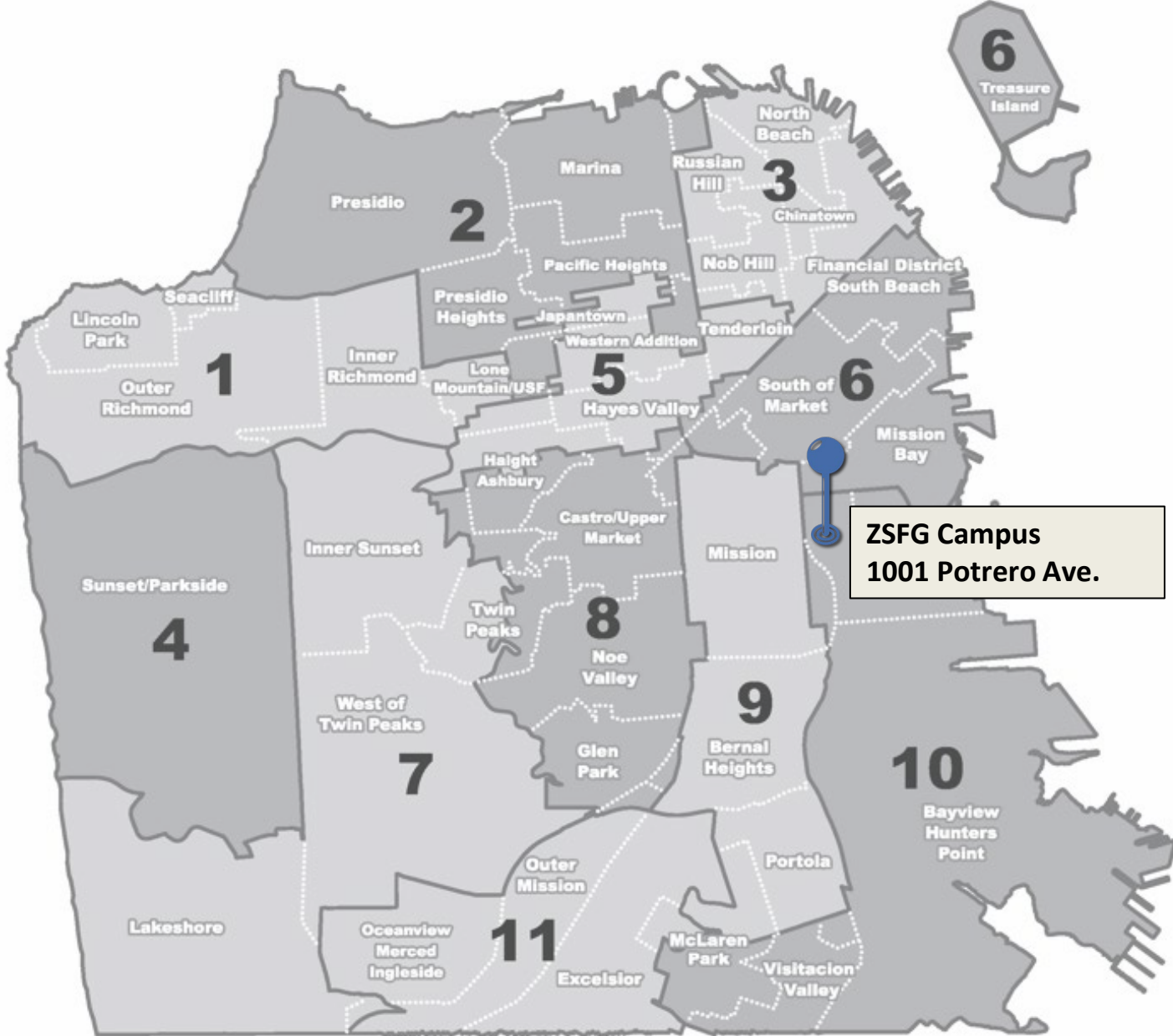


# Zuckerberg SF General (ZSFG) Campus Location

1001 Potrero Ave., 94110  
District 10

### More info:

- [sfpublicworks.org/publichealthbond](https://sfpublicworks.org/publichealthbond)
- [zuckerbergsanfranciscogeneral.org/about-us/current-projects/](https://zuckerbergsanfranciscogeneral.org/about-us/current-projects/)
- [sfpublicworks.org/HealthySafeVibrantSF](https://sfpublicworks.org/HealthySafeVibrantSF)



# Zuckerberg SF General Campus Overview

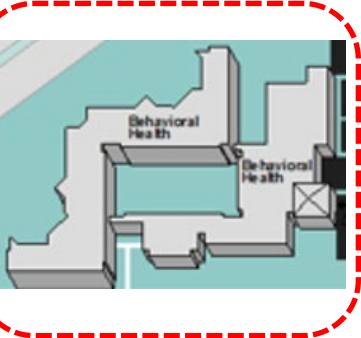
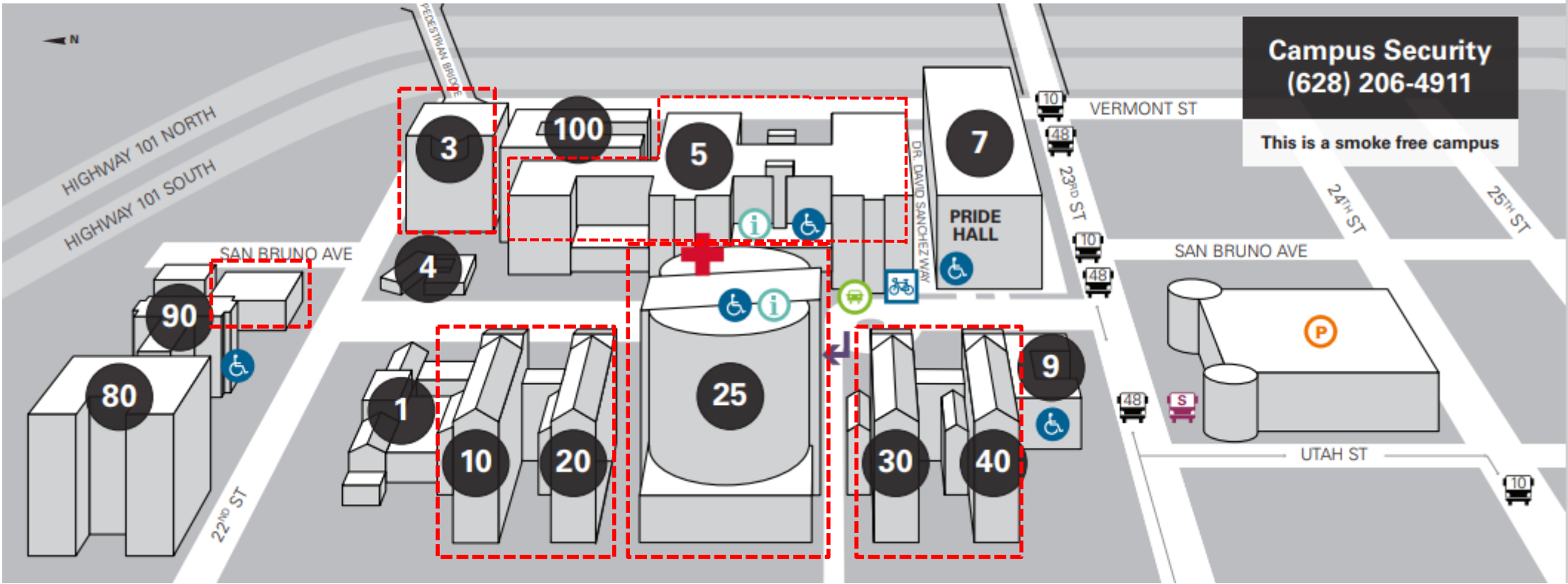
## Capital Projects

### Campus Map

1001 Potrero Avenue  
 San Francisco, CA 94110  
 (628) 206-8000



SAN FRANCISCO DEPARTMENT OF PUBLIC HEALTH



887 Potrero Avenue  
 (between 20<sup>th</sup> St. & 21<sup>st</sup> St.)

# Funding Sources For Capital Projects

Fund Sources
2008 SFGH Rebuild General Obligation (GO) Bond
2016 Public Health and Safety GO Bond
2020 Health and Recovery GO Bond
2024 Healthy, Safe, and Vibrant GO Bond
Certificates of Participation (COP)
General Funds
Behavioral Health Continuum Infrastructure Program (BHCIP) (State Grant)
SF General Hospital Foundation (Gift Grant)

Year	GO Bonds	Total Bond Amount (millions)	DPH Allocation (millions)
2008	SFGH Rebuild Program	887.4	887.4
2016	Public Health and Safety (PHS)	350	272
2020	Health and Recovery (HR)	487.5	60
2024	Healthy, Safe, and Vibrant (HSV)	390	205.1
<b>Total</b>		<b>2,114.9</b>	<b>1,424.5</b>

\*DPH allocation includes ZSFG Campus, Primary Care Clinics and Laguna Honda Hospital Campus



2008 Rebuild



2016 PHS

**PSYCHIATRIC EMERGENCY SERVICE (PES)**  
**Zuckerberg San Francisco General Hospital and Trauma Center**

- Interior renovation:
- Remodel of old Emergency Department in Building 5
- 6 Seclusion rooms
- Expanded Day room/Patient care area
- Centralized staff/Nursing station

2020 HR



2024 HSV

# Active Capital Projects

Building No.	Current Building Use	Original Built Date	# of Projects
Building 5	Outpatient Services	circa 1970s	24
Building 25	Acute Care Hospital	2015	11
Building 2	Service Building / Central Utilities Plant	circa 1970s	3
Building 3	Laboratory / Administrative	1964 1989 (addition)	2
Behavioral Health Center (BHC)	Behavioral Health Services	circa 1990s	2
Building 10/20/30/40	Administrative	circa 1800s	1
Significant Capital Projects over \$10 million			13



Behavioral Health Center (BHC)



Building 3

## Project Scopes and Vision

**Seismic Improvements.** Make much-needed seismic upgrades to existing Buildings 3 and 5 to ensure the safety and continuity of services

**Clinical Service Improvements.** Relocation, consolidation and expansion of existing clinical services into the seismically-upgraded Building 5 (former acute care hospital), which will serve as the new Ambulatory Care and Outpatient Center, allowing for improved accessibility of services for patients. Modernization of patient care spaces and created greater integration of primary care and behavioral health services

**Infrastructure Improvements.** Make much-needed infrastructure upgrades to existing building systems to mitigate issues that could impact ZSFG’s ability to maintain licensing, certification and regulatory compliance

# ZSFG Projects that Received Commission Approval the Last 2 Years

Project	Original Amount	Mod Amount	Revised Amount	Contract Type	Commission Action
ZSFG Building 2 Chillers, Boiler, and Cooling Tower Replacement	\$37M	NA	NA	Best Value	Emergency Contract Award
ZSFG Building 5 Rehabilitation Department Relocation - Phase 3	\$4.1M	\$559.6K	\$4.7M	Design-Bid-Build	Contract Mod
ZSFG Building 5 Renovation and Seismic Upgrade (includes 6 projects: Seismic Upgrade, Dialysis, Public Health Lab, IT Infrastructure, Psychiatric Emergency Services, and Clinical Laboratory)	\$95.1M	\$25.9M	\$121M	CMGC	Contract Mod
B5 Family Health Center (FHC) Early Demo	\$7.7M	NA	NA	Design-Bid-Build	Award
ZSFGH Inpatient Adolescent Behavioral Health Services - Early Demo	\$1.9M	NA	NA	Design-Bid-Build	Award
ZSFGH Inpatient Adolescent Behavioral Health Services - Tenant Improvement Buildout	\$15.5M	NA	NA	Best Value	Award
ZSFG Building 5 Cargo Elevator Modernization	\$1.2M	NA	NA	Design-Bid-Build	Award
B5 Family Health Center (FHC) Early Demo	\$7.7M	\$2.1M	\$9.8M	Design-Bid-Build	Contract Mod

# Project Challenges

**Existing Post-Tensioned (PT) Tendons and Reinforcing Steel in Structural Slab, Columns and Beams.** Prior to any anchorage to existing structural elements, non-destructive ground penetrating radar (GPR) / X-ray methods must be utilized to avoid damage to PT tendons and reinforcing steel

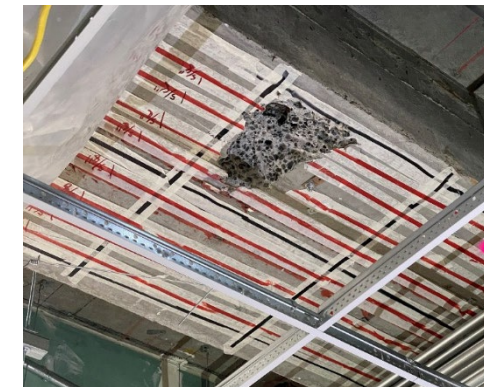
**HCAI as Authority Having Jurisdiction (AHJ).** Projects under the Department of Healthcare and Access Information (HCAI / former OSHPD) trigger higher levels of quality assurance. Any changes to approved drawings require submittal to HCAI Sacramento for review and approval (min 30-day review). All work must be inspected by a HCAI-certified Inspector of Record and HCAI Field Staff

**Infection Control (IC) Requirements.** Stringent infection control (IC) requirements mandate detailed written plans and efforts to set up and maintain negative pressure containments to isolate the workspace from the rest of the hospital during construction and oversight by DPH Environmental Health and Safety

**Hazardous Material Abatement and Mold Associated with Soil and Wet Work.** The age of the original building construction triggers rigorous building material sampling for asbestos and lead. Existing soil contains naturally-occurring asbestos and mold spores that triggered stringent containment requirements and handling/disposal

**Construction Noise and Vibration Impact to Hospital Operations.** All construction activities need to be coordinated with hospital clinical services and operations. Loud noises and vibration may lead to work stoppage if patient care services are impacted

**Unforeseen Conditions.** Accurate as-built of existing building systems are not available, and unforeseen conditions are often discovered that trigger design changes. Existing building construction also does not meet current code requirements, and the AHJ may require the project to bring the existing construction to meet current code



Example of PT Damage



Typical IC barrier setup

## Campus Impact: Noisy Work in Building 5, M-Wing

### Noisy Work Expected tomorrow and next Monday

Please be advised that noisy work involving concrete chipping will resume at the 3M seismic joint this Saturday, 2/14, from 8:00 AM – 4:00 PM and next Monday, 2/16 from 8:00 AM - 9:00 PM

Noise may telegraph through multiple floors of the building and be more noticeable in surrounding areas.

### ZSFG Noise Notification

# Project Updates (Building 5)

## Clinical Laboratory Automated Track Replacement (B5, 2<sup>nd</sup> Floor) (Completed in March 2025)



Photos from July 2024



Photos from October 2025

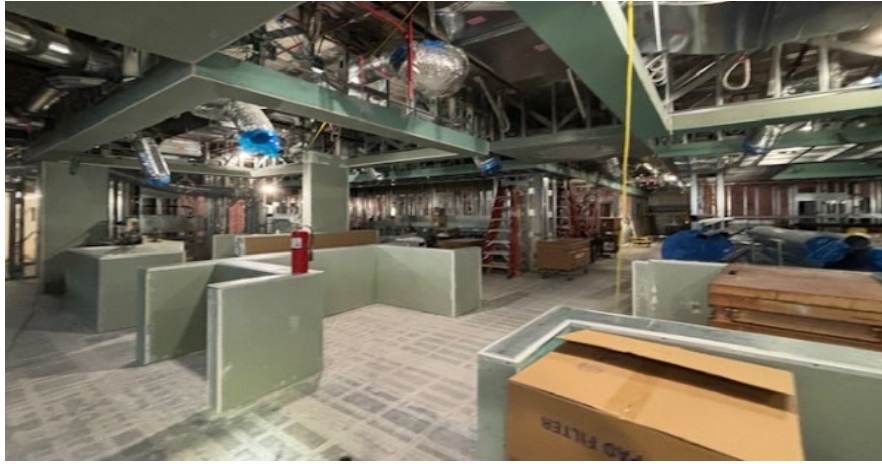
## Rehabilitation Department Relocation Phase 3 (B5, 3<sup>rd</sup> Floor) (Completed in August 2025)



## Adolescent Behavioral Health Services Early Demo (B5, 7<sup>th</sup> Floor) (Completed in February 2026)



## Dialysis (B5, 3<sup>rd</sup> Floor) (99% Completed)



Photos from July 2024



3/3/26,  
San Francisco, CA



3/3/26, 9:37 AM  
San Francisco, CA 94110



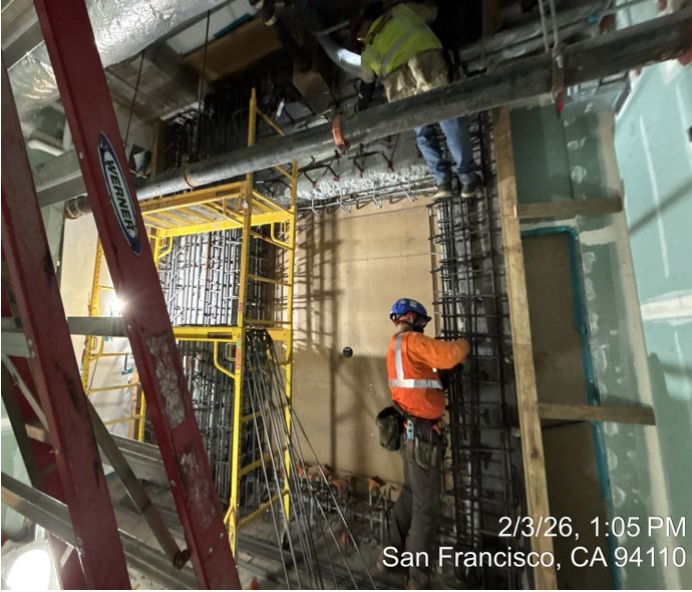
3/3/26, 9:40 AM  
San Francisco, CA 94110

Photos from February 2026

# Public Health Laboratory (B5, Ground Floor) (90% Completed)



Photos from July 2024



Photos from February 2026

# Seismic Upgrade (B5, Multiple Floors) (90% Completed)

## Representative Seismic Improvement Scopes



Existing Concrete Column Enlargement



Added Concrete Beams



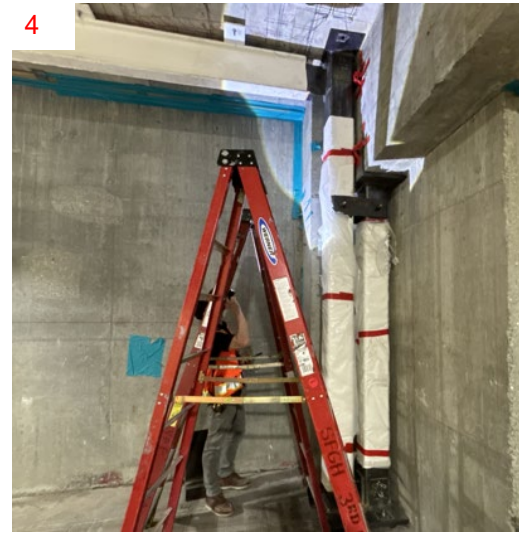
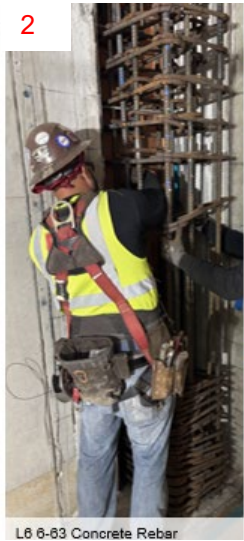
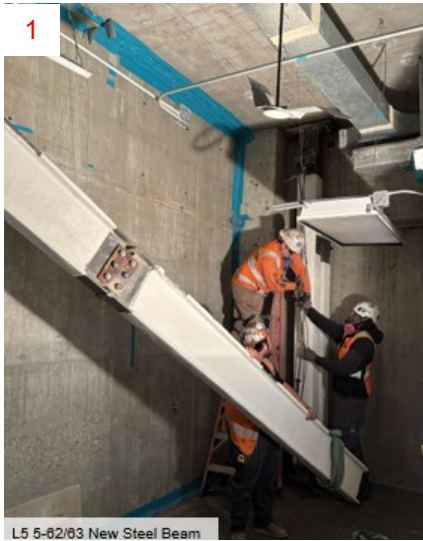
Fiber Reinforced Polymer (FRP) Strengthening Wraps



Exterior beam spandrel sawcut and caulking

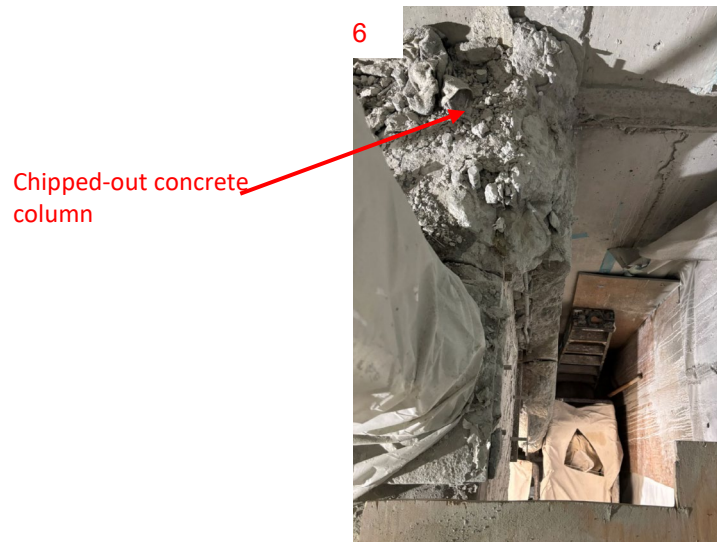
# Seismic Upgrade (B5, Multiple Floors) (90% Completed)

## Process to Construct New Seismic Joint



Photos #1-4: Construct new steel beam and column and new concrete column

Photo #5: Install new flexible connections for all existing utilities



Photos #6-7: Chip out existing column and slab to create new seismic joint

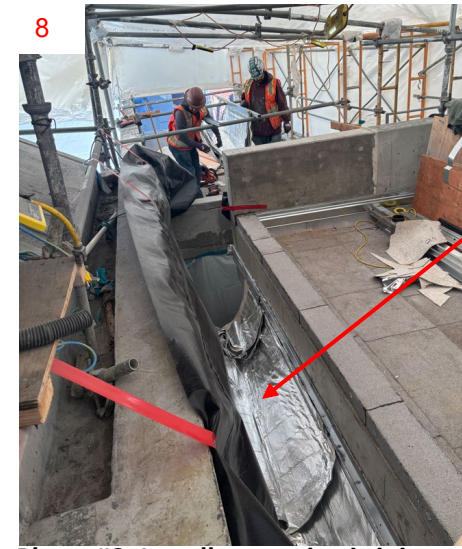
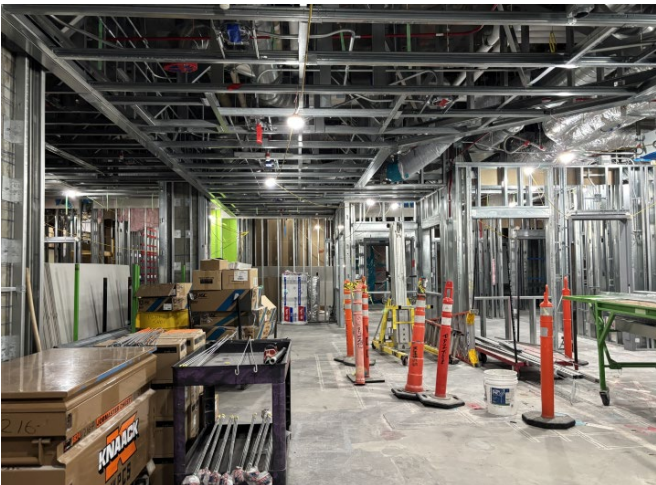


Photo #8: Install new seismic joint cover assembly

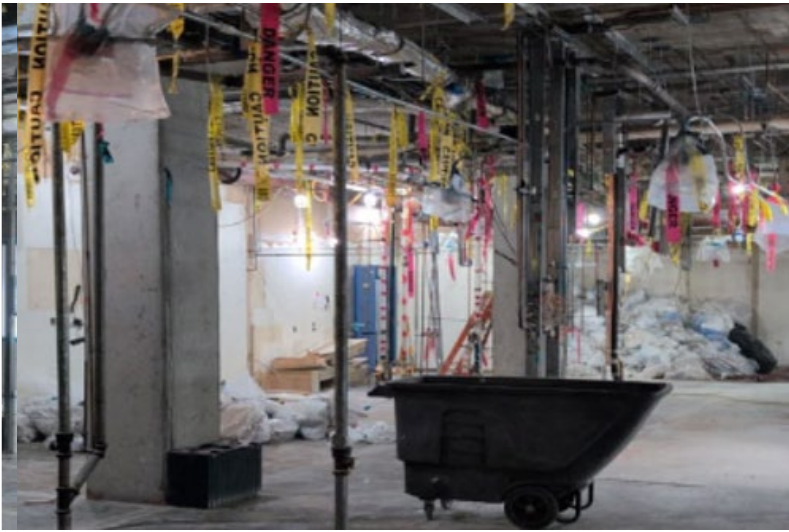
**IT Infrastructure (B5, Multiple Floors) (75% Completed)**



**Psychiatric Emergency Services (B5, 1st Floor) (45% Completed)**



# Family Health Center Phase 1 Early Demo (B5, 5<sup>th</sup> Floor) (55% Completed)



# Project Updates (Building 2 /Service Building)

## Chiller and Cooling Tower (B2) (48% Completed)





**THANK YOU!**