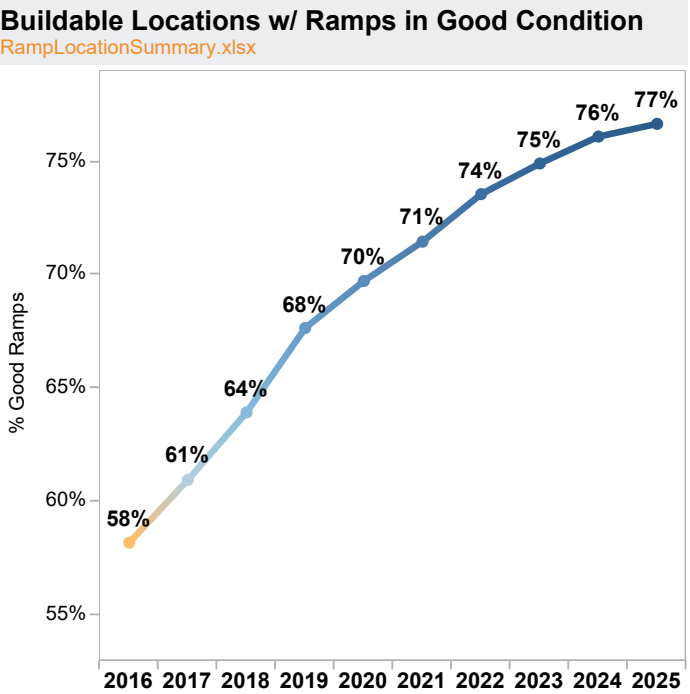
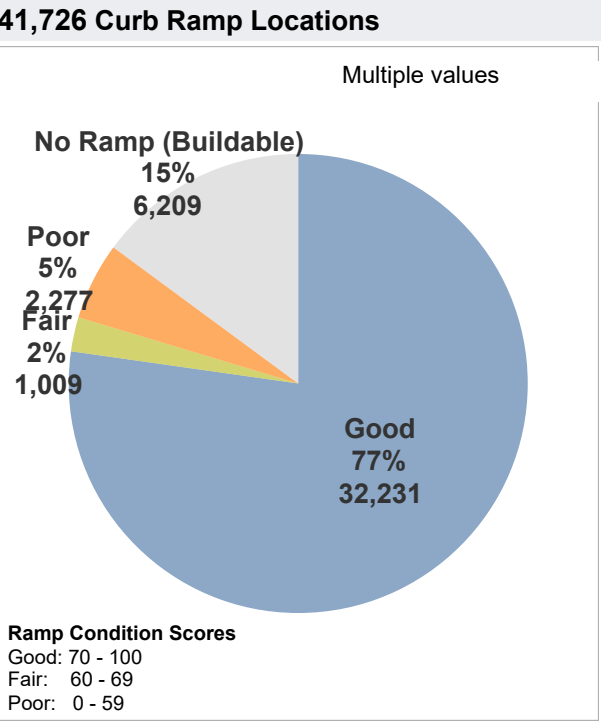
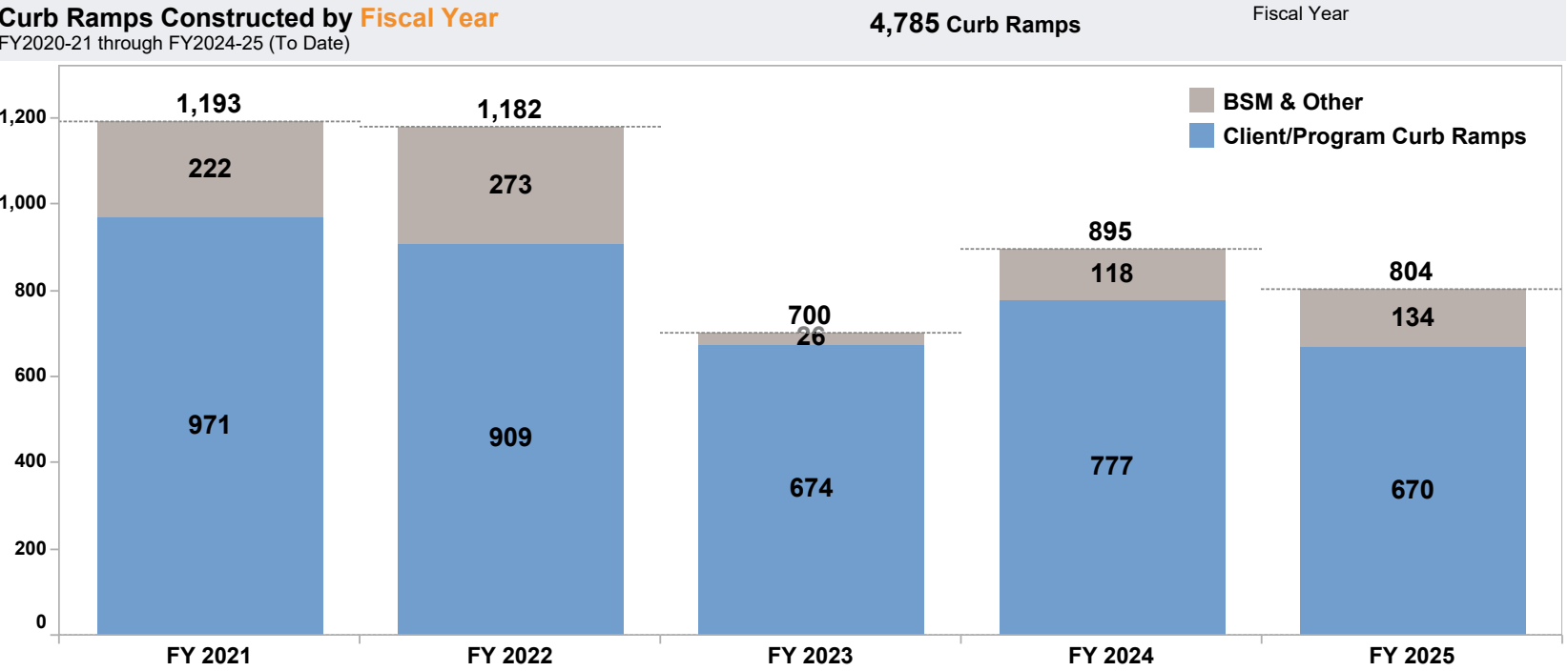


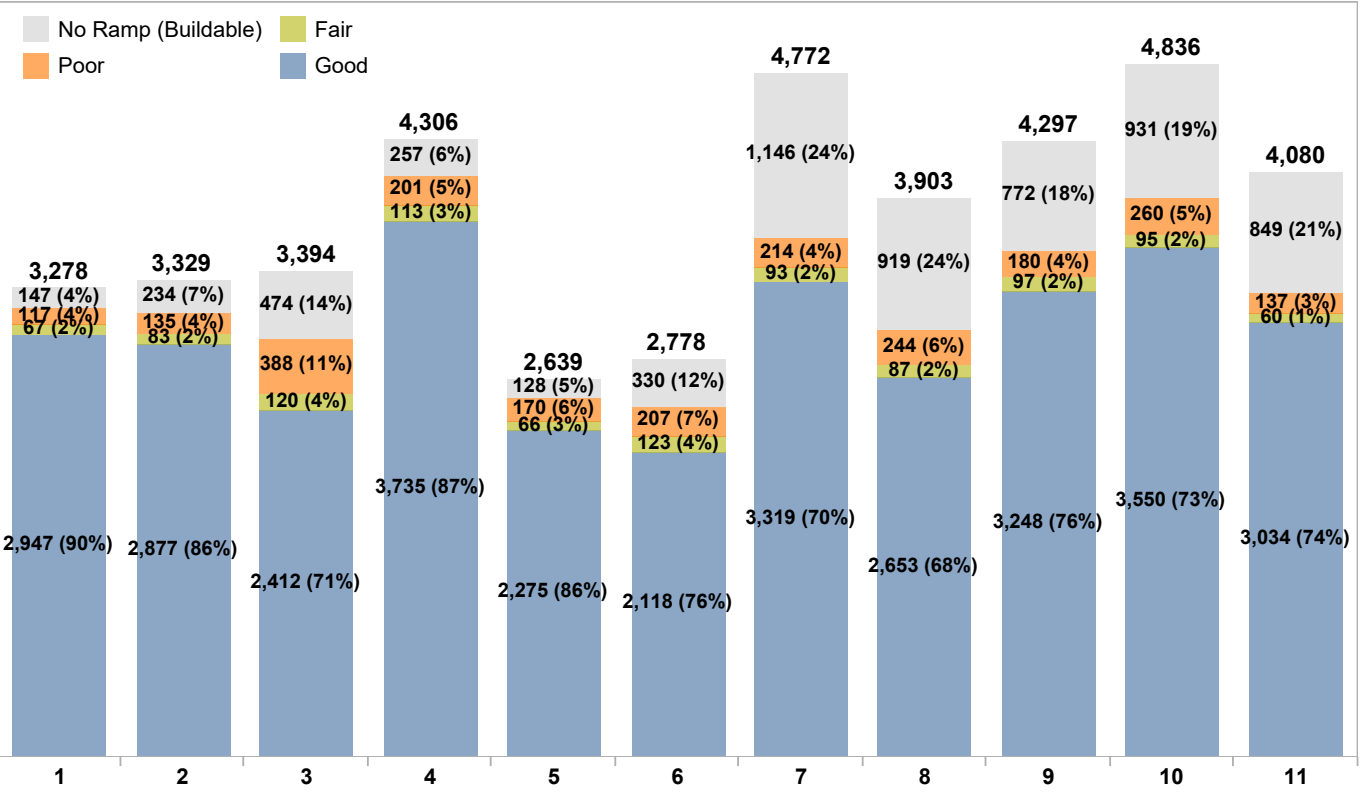
Curb Ramp Locations and Condition Source [CRIS viewAllRamps](#) except as noted



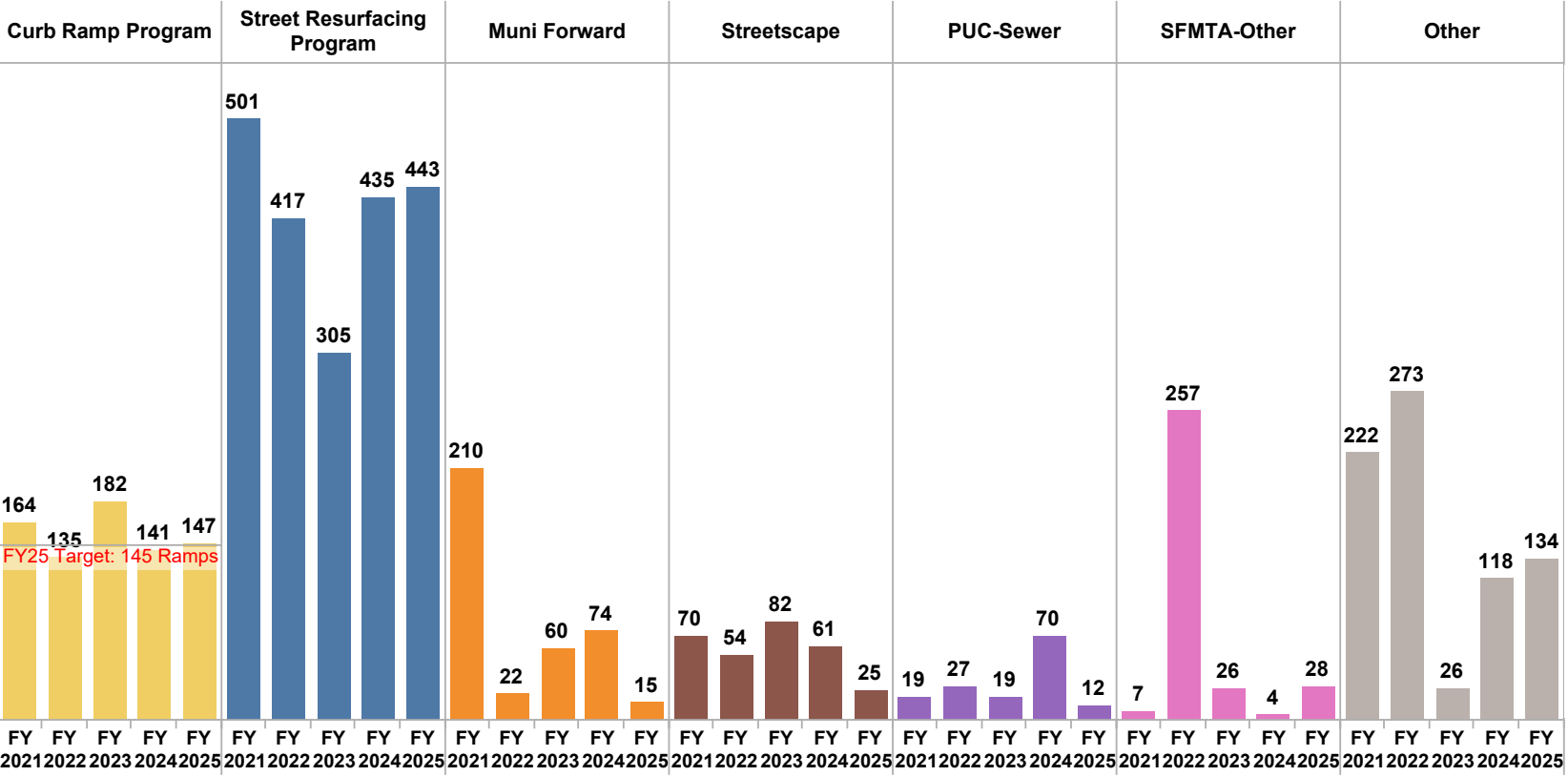
Curb Ramps Constructed Source [CRIS viewCRProjInfo_all](#) except as noted



Curb Ramp Need by District (Buildable Locations Only)



4,785 Curb Ramps Constructed by Client or Program FY2020-21 through FY2024-25 (To Date) Source [viewCRProjInfo_Statistics](#)



Curb ramps completed in the current fiscal year may also be funded by budgets from prior fiscal years. Contracts awarded within the current fiscal year may be funded by budgets from prior fiscal years and completion may roll into the next fiscal year.

Difficult locations remain high priority, but will cost more to complete due to conflicts with sub-sidewalk basements, major utilities, difficult topography and other issues.

