

**City and County of San Francisco
Department of Public Works
TABULATION OF BIDS**

SOURCING ID: 0000009854
CONTRACT TITLE: PW 4th Street Bulbouts Rebid
FULL TITLE: PW 4th Street Bulbouts Rebid

BIDS RECEIVED: October 16, 2024

<u>BIDDERS (in the order received & opened):</u>	<u>LBE Status Claimed</u>	<u>Total Bid Price</u>
Bay Area Lightworks, Inc.	Small-LBE 10%	\$2,095,651.00
Precision Engineering, Inc.	Small-LBE 10%	\$1,412,275.00
Liffey Electric	Micro-LBE 10%	\$1,676,885.00
	Average Bid:	\$1,728,270.33
	Engineer's Estimate:	\$1,196,074.25
	% of Engineer's Estimate:	144%
	% of Engineer's Estimate vs. Low Bid Received	118%

cc:	Ellen Lai	Carla Short	Albert Ko
	Iqbalbhai Dhapa	Au Bui	K2 Systems
	Ed Yee	Patrick Rivera	Nicolas Huff
	Norbu Dhonyo	Cyril Velasquez	All Bidders

For complete subcontractor listings, check: <https://bidopportunities.apps.sfdpw.org/CaseLoad/Details/2538>



MEMORANDUM

Date: October 29, 2024

To: Ellen Lai, Project Manager, DPW
 Ben Washington, Contract Administration, DPW

From: Norbu Dhonyo, Contract Monitoring Division

Subject: CMD Review of Bids Submitted on 10/16/2024 for 4th Street Bulbouts (Rebid) [Sourcing Event ID No. 0000009854]

Precision Engineering Inc. (“Precision”) is the apparent low bidder after the bid discount.

The bid discount was applied to bidders who are certified by the Contract Monitoring Division, (“CMD”) as a LBE in the type of work that is specified for the bidder by the Contract Awarding Authority.

Bidder	LBE Status, Type and Size	Base Bid	Bid Discount	Adjusted Bid with Bid Discount
Precision Engineering Inc.	SF LBE-OBE (Small)	\$1,412,275.00	10% = \$141,227.50	\$1,271,047.50
Liffey Electric	SF LBE-OBE (Micro)	\$1,676,885.00	10% = \$167,688.50	\$1,509,196.50
Bay Area Lightworks Inc.	SF LBE-MBE (Small)	\$2,095,651.00	10% = \$209,565.10	\$1,886,085.90

Precision satisfactorily demonstrated how they will meet the LBE subcontractor participation requirement.

A combination of Micro-LBE and Small-LBE participation will count toward LBE subcontractor participation compliance. Precision’s commitment for this contract:

	Requirement %	Commitment %
Micro/Small LBE	20%	25.05%

In their bid, Precision listed the following subcontractors on this contract.

Supplier Name	Scope of Work	LBE	LBE Size	LBE Percent	Percent Of Work	Amount
Baytech Engineering, Inc.	Electrical Work	LBE-MBE	MICR	100%	25.05%	\$353,800.00

Precision satisfied the “Good Faith Efforts” requirement.

Precision utilized Approach A and exceeded the LBE subcontractor participation requirement by 35%.

CMD finds Precision is responsive to pre-award requirements of Chapter 14B. Once awarded, the contract will be monitored for compliance with the LBE subcontractor participation commitment, as well as other 14B requirements.

Primary CMD contact for the contract: **Norbu Dhonyo, norbu.dhonyo@sfgov.org**

CMD must be contacted immediately for:

- Subcontractor addition/substitution;
- Contract modification that cumulatively increases the original contract value by 20%;
- Prompt payment issues;
- Any other issues pertaining to LBE subcontractor participation

Noncompliance may result in penalties, including monetary fines. Please communicate with CMD early.

ND

Modification of a CEQA Exempt Project

In accordance with Chapter 31 of the San Francisco Administrative Code, when a California Environmental Quality Act (CEQA) exempt project changes after the Approval Action and requires a subsequent approval, the Environmental Review Officer (or his or her designee) must determine whether the proposed change constitutes a substantial modification of that project. This checklist shall be used to determine whether the proposed changes to the approved project would constitute a “substantial modification” and, therefore, be subject to additional environmental review pursuant to CEQA.

PROPERTY INFORMATION/PROJECT DESCRIPTION		
Project Address (If different than front page)		Block/Lot(s) (If different than front page)
Not applicable. Project is in the public right of way: 4 th Street/Harrison Street and 4 th Street/Bryant Street intersections.		Not applicable (project is in public right of way)
Case No.	Previous Building Permit No.	New Building Permit No.
2016-012724ENV	Not applicable	Not applicable
Plans Dated	Previous Approval Action	New Approval Action
February 13, 2023	Approved by SFMTA Board of Directors on October 18, 2016	Not applicable
Modified Project Description:		
<p>In 2016, the San Francisco Municipal Transportation Agency (SFMTA) proposed a street improvement project at two intersections: 4th Street/Harrison Street and 4th Street/ Bryant Street. The project included the installation of bulbouts and associated changes to crosswalks, metered parking, bus zones, and passenger loading zones. The project was determined to be categorically exempt from environmental review (Planning Case No. 2016-012724ENV) in September 2016 and approved by the SFMTA Board of Directors in October 2016. Since then, the project has been modified to incorporate minor adjustments to some of the previously approved bulbouts and to include associated drainage and electrical work. All other previously approved project features remain unchanged.</p> <p>The proposed modifications are exempt under CEQA Guidelines section 15301(c): operation, repair, maintenance, or minor alteration of existing highways and streets, sidewalks, gutters, bicycle and pedestrian trails, and similar facilities.</p> <p>No exceptions per CEQA Guidelines section 15300.2 apply:</p> <ul style="list-style-type: none"> a) location exception does not apply to a class 1 categorical exemption, b) the project in combination with cumulative projects would not result in significant impacts, c) there are no unusual circumstances surrounding the project or project site, d) project site is not along a state scenic highway, e) project is not located on a hazardous waste list complied pursuant to government code section 65962.5, and f) no historical resources would be altered and impacts to archeological resources would be less than significant because project would implement Public Works Standard Archeological Measure I (Discovery during Construction). <p>Full modified project description, modified plans, and original categorical exemption (issued 9/2/2016) are attached below.</p>		

DETERMINATION IF PROJECT CONSTITUTES SUBSTANTIAL MODIFICATION

Compared to the approved project, would the modified project:

Result in expansion of the building envelope, as defined in the Planning Code;

Result in the change of use that would require public notice under Planning Code Section 311

Result in demolition as defined under Planning Code Section 317 or 19005(f)?


Is any information being presented that was not known and could not have been known at the time of the original determination, that shows the originally approved project may no longer qualify for the exemption?

If at least one of the above boxes is checked, further environmental review is required.

DETERMINATION OF NO SUBSTANTIAL MODIFICATION

The proposed modification would not result in any of the above changes.

If this box is checked, the proposed modifications are categorically exempt under CEQA, in accordance with prior project approval and no additional environmental review is required. This determination shall be posted on the Planning Department website and office and mailed to the applicant, City approving entities, and anyone requesting written notice.

Planner Name:	Signature or Stamp:
Jennifer McKellar	 June 28, 2023



Date: June 28, 2023
To: Jennifer McKellar, San Francisco Planning Department
From: Darcie Alaba, Kimberly Leung
San Francisco Municipal Transportation Agency
Thru: Andrea Contreras, San Francisco Municipal Transportation Agency
RE: Modification of SFMTA Order 5646 for public hearing 9/16/2016
Case Number: 2016-012724ENV

SUMMARY

In 2016, the San Francisco Municipal Transportation Agency proposed a street improvement project at the 4th/ Harrison streets intersection and 4th/ Bryant streets intersection. The project included the installation of bulbouts and associated changes to crosswalks, metered parking, bus zones, and passenger loading zones. In September 2016, the project was determined to be categorically exempt from environmental review (Planning Case No. 2016-012724ENV) and approved by the SFMTA Board of Directors on October 18, 2016. San Francisco Public Works was brought on to the project to lead detailed design and construction management. Since then, the project has been modified to incorporate minor adjustments to some of the previously approved bulbouts and to include associated drainage and electrical work. These project modifications are described below. All other previously approved project features remain unchanged.

MODIFICATIONS TO PREVIOUSLY APPROVED BULBOUTS

- Bryant Street, north side, from 4th Street to 27 feet westerly (for 7-foot sidewalk widening) – This was previously legislated for a length of 33 feet westerly in 2016 but has now been reduced to 27 feet.
- 4th Street, west side, from proposed crosswalk to 71 feet south of Harrison Street (for sidewalk widening up to 14 feet) – This was previously legislated for sidewalk widening up to 8 feet in 2016, but the widest point would now be 14 feet at the radius of the corner.

ADDITIONAL SCOPES OF WORK: DRAINAGE AND ELECTRICAL

The project would also be modified to include the following drainage and electrical work. All existing catch basins in the project intersections would be adjusted to new finished grades. No excavation is required for the existing catch basin adjustments. Utility castings, such as manhole covers, catch basins, and similar street iron, would be protected and would be adjusted to meet the new resurfaced street surface. New culverts, catch basins and manholes would also be installed, which would require



excavation. In addition, the project would install new traffic signal poles, combination traffic signal and streetlight poles, and pull boxes, which would require excavation. Table 1 summarizes the locations, scope, and excavation associated with the proposed drainage and electrical work.

Table 1. Locations of Drainage and Electrical Work and Associated Excavation

Location	New Project Feature	Quantity	Excavation Details	
			Dimensions	Volume (cubic yards)
North 4 th St and Harrison St corner	10" diameter VCP culvert	1	9 ft depth x 1 ft width x 26 ft length	9
West 4th St and Harrison St corner	10" diameter VCP culvert	1	9 ft depth x 1 ft width x 25 ft length	8.5
South 4th St and Harrison St corner	Catch basin	1	6 ft depth	8
	Manhole	1	14 ft depth	19
	10" diameter VCP culvert	1	9 ft depth x 1 ft width x 24 ft length	8
	Type 1 pull box	1	3 ft depth x 3 ft width x 3 ft length each	1
	Type 3 pull box	1	3 ft depth x 3 ft width x 3 ft length	1
Northeast 4th St and Harrison St corner	Pole 2: New 1-A traffic signal pole	1	The foundation is standard Caltrans Type 1-A pole, pole depth of foundation 6ft, and diameter is 2.0ft. Anticipated excavation depth is 10ft.	2.5
	36X pull box	1	19-inch depth x 24-inch width x 37-inch length	0.4
Southwest 4th St and Harrison St corner	Pole 7: New 1-A traffic signal pole	1	The foundation is standard Caltrans Type 1-A pole, pole depth of foundation 6ft, and diameter is 2.0ft. Anticipated excavation depth is 10ft.	2.5
	Pole 8: New mast arm and streetlight combo pole	1	The foundation is standard Caltrans 24-3-100, pole depth of foundation 12.0ft, and diameter is 3.0 ft. Anticipated excavation depth is 14 ft.	5
	Type 1 pull boxes	2	3 ft depth x 3 ft width x 3 ft length	1
	Type 3 pull box	1	3 ft depth x 3 ft width x 3 ft length	1
Northwest 4th St and Harrison St corner	Type 1 pull box	1	3 ft depth x 3 ft width x 3 ft length	1
	Type 3 pull box	1	3 ft depth x 3 ft width x 3 ft length	1
	36X pull box	1	30-inch depth x 24-inch width x 37-inch length	0.6
	48X pull box	1	30-inch depth x 33-inch width x 50-inch length	1.1
	Conduit	1	2 ft depth x 1 ft width x 235 ft	17.5
	Cabinet	1	22-inch depth x 28-inch width x 46.5-inch length	0.6



CONSTRUCTION

The construction would be led by San Francisco Public Works. The project would implement the following Public Works Standard Construction Measures as part of the project: (2) Air Quality; (3) Water Quality; (4) Traffic; (5) Noise; (6) Hazardous Materials; (7) Biological Resources; (8) Visual and Aesthetic Considerations, Project Site; (9) Cultural Resources (Archeological Resources) Public Works Standard Archeological Measure I (Discovery during Construction).

ATTACHMENT(S)

- Attachment A: 95% Plans (PW Transit As-Needed Contract No. 2: General As-Needed Contract G20) CSO#2 (February 13, 2023)



PW TRANSIT AS-NEEDED CONTRACT NO. 2 (GENERAL AS-NEEDED (GAN) CONTRACT G20) CSO #2



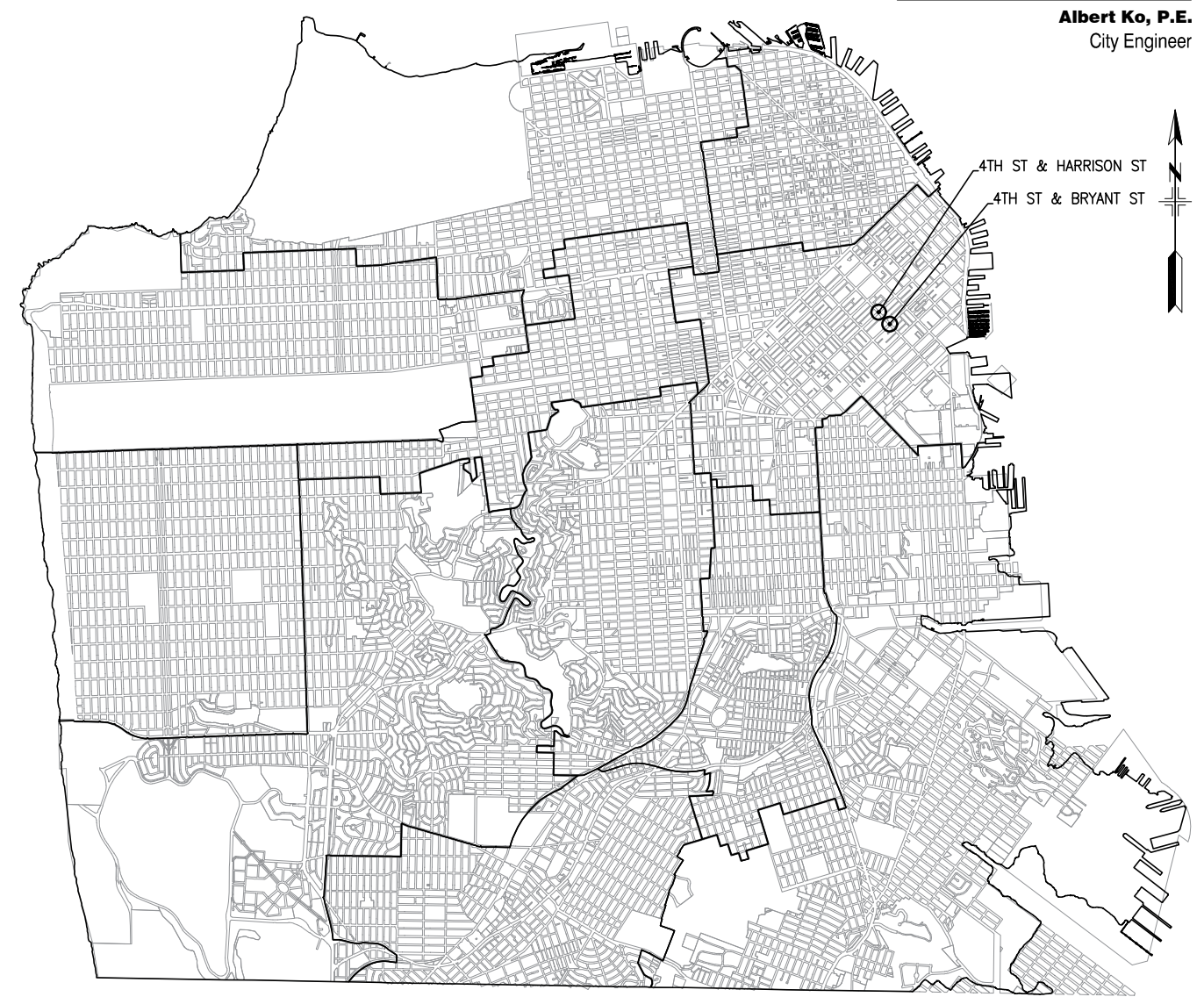
City and County of San Francisco
London Breed, Mayor
Carla Short, Interim Director

CONTRACT NO. 000005177 SOURCE EVENT ID 10036891

Public Works
 Infrastructure Design & Construction

INDEX OF DRAWINGS FOR CSO#2

DWG NO.	FILE NO.	TITLE
GENERAL		
G-4	120,943	COVER PAGE - INDEX OF DRAWINGS - LOCATION MAP
ROADWAY WORK		
R-G7	120,944	LEGEND AND ABBREVIATIONS
R-G8	120,945	GENERAL NOTES
CURB RAMP WORK		
CR-9	120,946	4TH ST AND HARRISON ST - CURB RAMP DETAILS
CR-10	120,947	4TH ST AND HARRISON ST - CURB RAMP DETAILS
CR-11	120,948	4TH ST AND BRYANT ST - CURB RAMP DETAILS
SEWER WORK		
SW-G	120,949	GENERAL NOTES - LEGEND - ABBREVIATIONS FOR DRAINAGE WORK
SW-1	120,950	4TH ST AT INTERSECTIONS OF HARRISON ST & BRYANT ST - DRAINAGE WORK PLAN
TRAFFIC PLANS		
ET-0.1	120,951	TRAFFIC SIGNAL SIGNALS
ET-3.0	120,952	4TH ST AND HARRISON ST - TRAFFIC SIGNAL PLAN
ET-3.1	120,953	4TH ST AND HARRISON ST - CONDUIT AND WIRING SCHEDULE
TRAFFIC STRIPING		
T-4	120,954	EXISTING TRAFFIC STRIPING - FOURTH STREET HARRISON STREET TO BRANNAN STREET



Albert Ko, P.E.
City Engineer

LOCATION MAP

NO.	DATE	DESCRIPTION	BY	APP.
TABLE OF REVISIONS				
THIS DRAWING WAS LAST MODIFIED: 02/03/23 16:27, BY: EHADDAD				

REFERENCE INFORMATION
& FILE NO. OF SURVEYS



BUREAU OF ENGINEERING
 CITY & COUNTY OF SAN FRANCISCO
SAN FRANCISCO PUBLIC WORKS
 49 SOUTH VAN NESS AVENUE, SUITE 800
 SAN FRANCISCO, CA 94103

Date: _____
 Acting Section Mgr: DEANNA CALLEROS
 Deputy Bureau Mgr: FERNANDO CISNEROS
 Acting Bureau Mgr: IQBAL DHAPA

DESIGNED: DATE: **E.HADDAD 2/23**
 DRAWN: DATE: **E.HADDAD 2/23**
 CHECKED: DATE: **C.YU 2/23**



SCALE:
NO SCALE
 SHEET OF SHEETS
1 OF 12

**PW TRANSIT AS-NEEDED CONTRACT NO.2
(GENERAL AS-NEEDED (GAN) CONTRACT G20)
CSO#2**

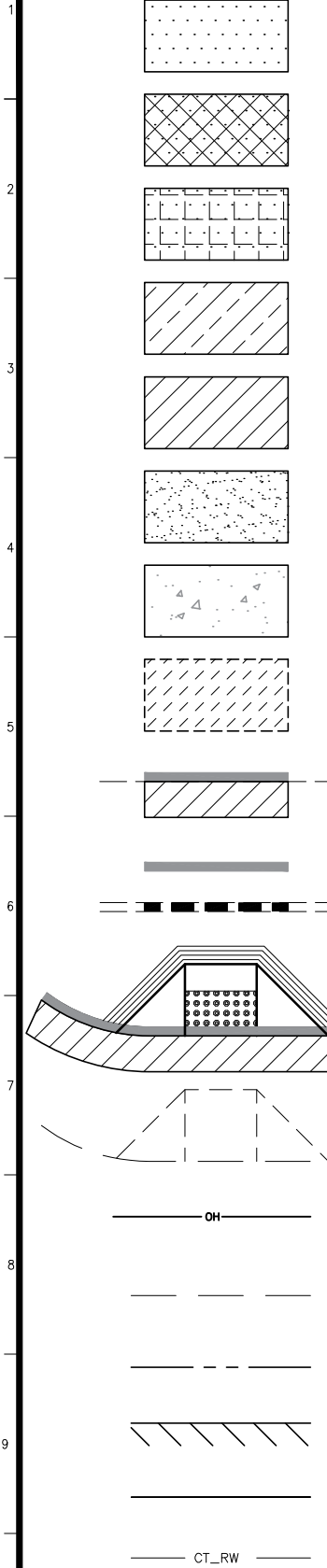
**COVER PAGE
INDEX OF DRAWINGS
LOCATION MAP**

CONTRACT NO.
000005177
 DRAWING NO.
G-4
 FILE NO.
120,943
 REV. NO.

Drawing Path: V:\2801_PW_Muni_Forward_AsNeed_2_Design_Working_Drawings\ESH\XX_Submittal\CSD\B\B\B\CAD_Files\CoverSheet.dwg, Login: EHADDAD, Date: 2/23/23, File: V:\2801_PW_Muni_Forward_AsNeed_2_Design_Working_Drawings\ESH\XX_Submittal\CSD\B\B\B\CAD_Files\CoverSheet.dwg, Model Units: Undefined
 Plot Time: Fri, 03 Feb 2023 - 4:28pm
 Measurement Units are English

LEGEND

ABBREVIATIONS



APPROXIMATE AREA TO BE COLD PLANED 2-INCH FULL DEPTH OF CUT AND RESTORED WITH 2-INCH THICK MINIMUM OF ACWS. EXACT LOCATION AND DIMENSIONS TO BE DETERMINED BY THE CITY REPRESENTATIVE IN THE FIELD

APPROXIMATE AREA TO BE RECONSTRUCTED WITH 2-INCH THICK MINIMUM OF ACWS ON 8-INCH THICK CONCRETE BASE. EXACT LOCATION AND DIMENSIONS TO BE DETERMINED BY THE CITY REPRESENTATIVE IN THE FIELD

APPROXIMATE AREA TO BE RECONSTRUCTED WITH 2-INCH THICK MINIMUM OF ACWS ON 10-INCH THICK CONCRETE BASE. EXACT LOCATION AND DIMENSIONS TO BE DETERMINED BY THE CITY REPRESENTATIVE IN THE FIELD

APPROXIMATE AREA TO BE CONSTRUCTED WITH 10-INCH THICK REINFORCED CONCRETE BUS PAD PER SF PUBLIC WORKS STANDARD PLAN 96,607 REV. 2

APPROXIMATE AREA TO BE RECONSTRUCTED WITH 8-INCH THICK PARKING STRIP OR GUTTER

APPROXIMATE AREA TO BE RECONSTRUCTED WITH 8-INCH THICK MINIMUM OF CONCRETE PAVEMENT

APPROXIMATE AREA OF 3-1/2-INCH THICK CONCRETE SIDEWALK TO BE RECONSTRUCTED WITH REINFORCEMENT AT ENTRANT CORNERS PER SF PUBLIC WORKS STANDARD PLAN 96,608 REV. 1

APPROXIMATE LIMITS OF EXISTING BASEMENT BENEATH THE SIDEWALK, CURB, AND/OR ROADWAY. PRIOR TO ANY WORK THE CONTRACTOR SHALL VERIFY BASEMENT LIMITS AND NOTIFY THE CITY REPRESENTATIVE IN WRITING ANY CONFLICTS

CONSTRUCT COMBINED 6-INCH WIDE CONCRETE CURB AND 2-FOOT WIDE CONCRETE GUTTER

CONSTRUCT 6-INCH WIDE CONCRETE CURB

RESET EXISTING GRANITE CURB (CURB RAMP DRAWINGS)

CONCRETE CURB RAMP TO BE CONSTRUCTED WITH 12-INCH WIDE GROOVED BORDERS (WARNING BANDS) AND CONCRETE DETECTABLE SURFACE TILES (TRUNCATED DOMES) PER SF PUBLIC WORKS ACCESSIBLE STREET CROSSING STANDARD PLANS 102,854 THRU 102,864

EXISTING CURB RAMP TO REMAIN

EXISTING MUNI OVERHEAD CONTACT SYSTEM (OCS) WIRES

EXISTING CURB/GUTTER/PARKING STRIP/ISLAND

APPROXIMATE LOCATION OF PROPERTY LINE

CONFORM LINE

MATCH LINE

CT_RW CAL TRANS RIGHT OF WAY



FIG TOP OF CURB OR SIDEWALK OR PAVEMENT ELEVATION
FIG FLOW LINE/GUTTER OR CATCH BASIN ELEVATION

FIGxFIG APPROXIMATE DIMENSIONS, IN FEET, OF CONCRETE BASE RECONSTRUCTION

FIG. FIG. SECTION/DETAIL IDENTIFICATION DRAWING NO.

AWNING POLE

BENCH MARK

BIKE RACK

BOLLARD

(N) CATCH BASIN

(E) CATCH BASIN TO REMAIN

(E) CATCH BASIN TO BE ABANDONED

CITY MONUMENT

DIRECTION OF DRAINAGE FLOW

DOWN SPOUT

ELECTROLIER

FIRE HYDRANT

FIRE HYDRANT VALVE

GAS VALVE

HPFS HYDRANT

HPFS VALVE

LIGHT POLE

MUNI GUY POLE

MUNI GUY POLE WITH LIGHT

USPS MAIL BOX

USPS MAIL BOX RELAY

PARKING METER

SEWER CLEAN OUT

SIGN POLE(S)

SPRINKLER

SURVEY CONTROL POINT

TRAFFIC SIGNAL

UNKNOWN VALVE

WATER VALVE

TREE

AB	ASSESSOR'S BLOCK	LE	LINE END
AC	ASPHALT CONCRETE	LPFH	LOW PRESSURE HIGH HYDRANT
ACWS	ASPHALT CONCRETE WEARING SURFACE	L1	LINE 1, ETC
AWSS	AUXILIARY WATER SUPPLY SYSTEM	MAX	MAXIMUM
BC	CURVE BEGINNING	MIN	MINIMUM
BLDG	BUILDING	MFN	METROMEDIA FIBER OPTIC CABLE NETWORK
BLHP	BUREAU OF LIGHT, HEAT AND POWER	MH	MANHOLE
BOT	BOTTOM	MTR	METER
BRK	GRADE BREAK	MON	MONUMENT
BSW	BACK OF SIDEWALK	(N)	NEW
BVC	VERTICAL TANGENT-CURVE INTERSECT	N/A	NOT APPLICABLE
C	CURB	NO.	NUMBER
CB	CATCH BASIN	NIC	NOT IN CONTRACT
CL	CENTER LINE	NTS	NOT TO SCALE
CO	SANITARY SEWER CLEANOUT/VENT	OCS	OVERHEAD CONTACT SYSTEM
COMM	COMMUNICATIONS	OG	OUTSIDE GUTTER
CONC	CONCRETE	PB	PULL BOX
CR	CURB RAMP	PC	PROPERTY CORNER
C1	CURVE 1, ETC	PCC	POINT OF HORIZONTAL COMPOUND CURVE/COMPOUND CURVE-CURVE INTERSECT
DT	DEPARTMENT OF TECHNOLOGY	PI	POINT OF INTERSECTION/TANGENT-TANGENT INTERSECT
DWG	DRAWING	PL	PROPERTY LINE
DWY	DRIVEWAY	POC	POINT OF CURVATURE/TANGENT-CURVE INTERSECT
(E), EX	EXISTING	PRC	POINT OF HORIZONTAL REVERSE CURVE/REVERSE CURVE-CURVE INTERSECT
EA	EACH	PT	POINT OF TANGENCY/CURVE-TANGENT INTERSECT
EC	CURVE END	PVI	POINT OF VERTICAL INTERSECTION
EL, ELEV	ELEVATION	REF PT	REFERENCE POINT
ENT	ENTRANCE	REV	REVISION
EQ	EQUAL	ROW	RIGHT-OF-WAY
EVC	VERTICAL CURVE-TANGENT INTERSECT	S, SW	SEWER
FA	FIRE ALARM POLE	SWLK	SIDEWALK
FH	FIRE HYDRANT	SL	STREET LIGHTING
FIG	FIGURE	STA	STATION
FL	FLOW LINE	TS	TRAFFIC SIGNAL
G	GUTTER	TYP	TYPICAL
GB	GRADE BREAK	UNK	UNKNOWN
GR	GRATE	USPS	UNITED STATES POSTAL SERVICE
GV	GAS VALVE	UTIL	UTILITY
HYD	HYDRANT	WM	WATER METER
HP	HIGH POINT	WV	WATER VALVE
HPFH	HIGH PRESSURE FIRE HYDRANT		
HPFS	HIGH PRESSURE FIRE SERVICE		
IRV	IRRIGATION VALVE		
LB	LINE BEGINNING		

NO.	DATE	DESCRIPTION	BY	APP.
TABLE OF REVISIONS				
THIS DRAWING WAS LAST MODIFIED: 02/03/23 16:31, BY: EHADDAD				

REFERENCE INFORMATION & FILE NO. OF SURVEYS



BUREAU OF ENGINEERING
CITY & COUNTY OF SAN FRANCISCO
SAN FRANCISCO PUBLIC WORKS
49 SOUTH VAN NESS AVENUE, SUITE 800
SAN FRANCISCO, CA 94103

Acting Section Mgr:	DEANNA CALLEROS
Deputy Bureau Mgr:	FERNANDO CISNEROS
Acting Bureau Mgr:	IQBAL DHAPA

DESIGNED:	E.HADDAD	DATE:	2/23
DRAWN:	E.HADDAD	DATE:	2/23
CHECKED:	C.YU	DATE:	2/23



SCALE:	N/A
SHEET OF SHEETS:	2 OF 12

PW TRANSIT AS-NEEDED CONTRACT NO.2
(GENERAL AS-NEEDED (GAN) CONTRACT G20)
CS0#2

LEGEND AND ABBREVIATIONS

CONTRACT NO.	000005177
DRAWING NO.	R-G7
FILE NO.	120,944
REV. NO.	0

Drawing Path: V:\2201_PW_Muni_Forward_AsNeed_No.2_10036891\2_Design\Working_Drawings\ESH\XX_Submittal\CS0#2\120,944.dwg
 Model Units: Feet
 Plot Time: Fri, 03 Feb 2023 - 4:32pm

GENERAL NOTES

1. ENTERING INTO THIS CONTRACT WITH THE CITY INDICATES THAT THE CONTRACTOR HAS VISITED THE SITE, IS FAMILIAR WITH THE EXISTING CONDITIONS AND REVIEWED SAME WITH THE REQUIREMENTS OF THE CONTRACT DOCUMENTS.
2. THE CONTRACTOR IS RESPONSIBLE FOR CHECKING ALL CONTRACT DOCUMENTS AND FIELD CONDITIONS, AND FOR CONFIRMING THAT THE WORK IS BUILDABLE AS SHOWN BEFORE PROCEEDING WITH THE WORK. THE CONTRACTOR IS RESPONSIBLE FOR OBTAINING CLARIFICATION FROM THE CITY BEFORE PROCEEDING WITH THE WORK IN QUESTION OR RELATED WORK. WRITTEN DIMENSIONS SHALL GOVERN. THE CONTRACTOR SHALL VERIFY ALL DIMENSIONS PRIOR TO PROCEEDING WITH THE WORK.
3. THE CONTRACTOR SHALL VERIFY EXISTING FACILITIES IN THE FIELD, WHETHER OR NOT THEY ARE SHOWN ON THE DRAWINGS.
4. THE CONTRACTOR SHALL NOTIFY THE CITY REPRESENTATIVE IN WRITING OF CONFLICTS BETWEEN DRAWINGS PRIOR TO PROCEEDING WITH THE WORK IN QUESTION.
5. THE CONTRACTOR IS RESPONSIBLE FOR WORKING AROUND AND PROTECTING ALL EXISTING FACILITIES ADJACENT TO THE WORK AREA. THESE FACILITIES INCLUDE, BUT ARE NOT LIMITED TO, THE FOLLOWING: CABLE CAR TRACKS, TREES, LANDSCAPING, HYDRANTS AND UTILITY POLES.
6. THE CONTRACTOR IS RESPONSIBLE FOR COORDINATING ALL WORK UNDER THIS CONTRACT TO AVOID REDUNDANCY BETWEEN PAVING/CURB RAMP WORK AND SEWER AND/OR WATER WORK OR OTHER UTILITY REQUIRED TRENCH RESTORATION.
7. CONFORM LINE SHALL BE FIVE (5) FEET BEYOND THE EXTENDED PROPERTY LINE UNLESS OTHERWISE INDICATED ON THE DRAWINGS OR AS DIRECTED BY THE CITY REPRESENTATIVE.
8. THE THICKNESS OF THE NEW ASPHALT CONCRETE WEARING SURFACE (ACWS) SHALL BE TWO (2) INCHES MINIMUM UNLESS OTHERWISE INDICATED ON THE DRAWINGS OR AS DIRECTED BY THE CITY REPRESENTATIVE.
9. CURB GRADE SHALL BE SIX (6) INCHES ABOVE THE ADJACENT PAVEMENT GRADE OR GUTTER GRADE UNLESS OTHERWISE INDICATED ON THE DRAWINGS OR AS DIRECTED BY THE CITY REPRESENTATIVE.
10. WHEN EXISTING AND NEW ELEVATIONS ARE GIVEN FOR THE SAME POINT, THE CONTRACTOR SHALL CONSTRUCT TO NEW ELEVATIONS. UNLESS OTHERWISE DIRECTED BY THE CITY REPRESENTATIVE, THE EXISTING ELEVATIONS ARE FOR INFORMATION ONLY.
11. STANDARD DETAILS AND INFORMATION SHALL BE USED FOR ALL APPLICABLE CASES UNLESS OTHERWISE INDICATED.
12. CROSS SECTION CALL-OUTS ARE SHOWN ONLY ONCE ON THE DRAWINGS AND ARE TYPICAL FOR SIMILAR CONDITIONS UNLESS OTHERWISE INDICATED.
13. EXISTING CATCHBASIN GRADE SHALL BE ADJUSTED IN THE FIELD TO CONFORM TO NEW GUTTER GRADE.
14. NEW GUTTER AND/OR PARKING STRIP SHALL CONFORM TO EXISTING PAVEMENT UNLESS OTHERWISE INDICATED.
15. THE LIMITS OF SIDEWALK RECONSTRUCTION SHOWN ON THE DRAWINGS ARE APPROXIMATE. THE CONTRACTOR SHALL SAWCUT TO THE NEAREST FLAG/Joint AND MATCH THE EXISTING SCORE PATTERN UNLESS OTHERWISE INDICATED ON THE DRAWINGS OR AS DIRECTED BY THE CITY REPRESENTATIVE.
16. ALL UTILITY VAULTS AND PULL BOXES WITHIN THE SIDEWALK RECONSTRUCTION AREA SHALL BE ADJUSTED TO THE NEW GRADE.
17. FOR ALL TRAFFIC SIGNAL PULL BOXES THAT ARE ROTATED, RELOCATED OR ADJUSTED, THE CONTRACTOR SHALL CONTACT MTA TRAFFIC SIGNAL SHOP NILESH RAM AT LEAST THREE (3) DAYS PRIOR TO SETTING THE PULL BOX AT THE NEW LOCATION AND/OR GRADE. ALL WORK SHALL MEET REQUIREMENTS OF SFPDW STANDARD PLAN 87,201
18. THE 12-INCH WIDE GROOVED BORDERS (WARNING BANDS) ON CURB RAMPS SHALL NOT BE PART OF THE SLOPED RAMP AND WING SURFACES UNLESS OTHERWISE INDICATED.
19. CURB RAMPS WITH GRADE BREAKS SHALL HAVE A BACK OF CURB (BOC) ELEVATION OF 0.01 FEET HIGHER THAN THE SPECIFIED FACE OF CURB (FOC) ELEVATION. CURB RAMPS WITHOUT GRADE BREAKS SHALL HAVE A MAXIMUM BACK OF CURB (BOC) ELEVATION OF 0.04 FEET HIGHER THAN THE FACE OF CURB (FOC) ELEVATION.
20. ELEVATIONS SHOWN ON CURB RAMP DETAILS ARE MEASURED IN FEET AND ARE RELATIVE TO A LOCAL REFERENCE POINT (TOP OF FIRE HYDRANT IN MOST CASES) UNLESS OTHERWISE INDICATED.
21. ASPHALT CONCRETE PATCHING AROUND NEW GUTTERS AND/OR PARKING STRIPS AT CURB RETURNS SHALL BE CONSIDERED AS INCIDENTAL WORK TO THE CURB RAMP BID ITEM.
22. CONCRETE BASE WORK SHOWN ON CURB RAMP DETAILS MAY OVERLAP WITH THE SAME WORK SHOWN ON PAVEMENT PLANS. THE CONTRACTOR SHALL COORDINATE OVERALL PAVING WORK TO AVOID PERFORMING DUPLICATE WORK.

23. ANY POLES OR VERTICAL ELEMENTS INSTALLED OR RELOCATED NEAR FIRE HYDRANTS SHALL ADHERE TO THE FOLLOWING MINIMUM CLEARANCES: THE MINIMUM CLEARANCE BETWEEN A POLE OR VERTICAL ELEMENT TO A HIGH PRESSURE HYDRANT IS FIVE (5) FEET. THE MINIMUM CLEARANCE BETWEEN A POLE OR VERTICAL ELEMENT TO A LOW PRESSURE HYDRANT IS FIVE (5) FEET.
24. ALL CITY MONUMENTS MUST BE PROTECTED PER STATE LAND SURVEYORS ACT. CALL THE COUNTY SURVEYOR AT (628)271-2132 TO REPORT ANY MONUMENTS IN DANGER OF DISTURBANCE, DESTRUCTION OR REMOVAL.
25. CONTRACTOR SHALL AVOID DAMAGING AND PROTECT IN PLACE EXISTING GRANITE CURBS. CONTRACTOR SHALL NOTIFY CITY REPRESENTATIVE OF ANY GRANITE CURB NOT IDENTIFIED ON THE PLANS TO BE RESET OR SALVAGED THAT IS IN CONFLICT WITH PROPOSED WORK.
26. EXISTING GRANITE CURB SHALL ONLY BE REPLACED WITH CONCRETE CURB ON CURVED RETURNS AND AS PART OF CURB RAMP CONSTRUCTION. EXISTING GRANITE CURB IN GOOD CONDITION SHALL BE RESET TO NEW GRADE. IF EXISTING GRANITE CURB IS DAMAGED, CONTRACTOR SHALL NOTIFY CITY REPRESENTATIVE.
27. IN THE EVENT COBBLESTONES ARE ENCOUNTERED AND TO BE REMOVED IN ANY STREET UNDER CONSTRUCTION, THE CONTRACTOR SHALL REMOVE THEM FROM THE PROJECT SITE AS CITY PROPERTY. SALVAGE, HAULING AND DELIVERY OF EXISTING COBBLESTONES TO THE DESIGNATED AREAS, FROM THE PROJECT SITE, SHALL BE DONE AS INCIDENTAL WORK.
28. IN THE EVENT GROUNDWATER WELLS ARE ENCOUNTERED IN ANY STREET UNDER CONSTRUCTION, THE CONTRACTOR SHALL BE RESPONSIBLE FOR GROUNDWATER WELL PRESERVATION (OR DESTRUCTION, IF DESTRUCTION IS CALLED FOR). FOR PRESERVATION, THE CONTRACTOR SHALL EXERCISE CARE IN WORKING AROUND GROUNDWATER WELLS TO PREVENT DAMAGE.
29. AT THE COMPLETION OF WORK, THE CONTRACTOR SHALL REMOVE ALL MARKS, STAINS AND BLEMISHES RESULTING FROM CONSTRUCTION OPERATIONS THROUGHOUT THE CONTRACT.
30. THE CONTRACTOR SHALL PREVENT CONSTRUCTION MATERIAL, PAVEMENT, CONCRETE, EARTH, PAINTS, THINNER, SOLVENTS, AND OTHER DEBRIS OR TOXIC MATERIAL FROM ENTERING A SEWER OR SEWER STRUCTURE INCLUDING SURFACE FLOW COLLECTION SYSTEM, SUCH AS CATCHBASINS AND CULVERTS.
31. THE CONTRACTOR IS RESPONSIBLE FOR CONTACTING PUBLIC AND PRIVATE UTILITIES FOR UTILITY ADJUSTMENT AND/OR RELOCATION. THE FOLLOWING ARE CONTACT PHONE NUMBERS:

BLHP	STREET LIGHTS		(415) 227-8506	Streetlights@swater.org
DPW	NEWS RACKS SEWER REPAIR STREET TREES (URBAN FORESTRY)	NAHEL SIMON	(628) 271-2098 (415) 695-2096 (415) 641-2676	
DT	FIRE ALARM	JOSHUA UUSITALO	(415) 517-2360	Joshua.Uusitalo@sfgov.org
MTA	MUNI OVERHEAD LINES TRAFFIC SIGNAL SHOP TRAFFIC SIGNAL EMERGENCY NO. BUS SHELTERS	JOHN ORKES CLIFFORD SMETHURST NILESH RAM GAIL STEIN	(415) 554-9227 (415) 554-9220 (415) 401-3704 (415) 401-3700 (415) 646-2308	Nilesh.Ram@sfmta.com
SFWD	BUSINESS HOURS REPAIRS NON-BUSINESS HOURS REPAIRS IDENTIFY LINES		(415) 550-4965 (415) 550-4911 (415) 550-4925	
AT&T		LYNN SCHUSSEL MARIA TORRES CAROL MITCHELL	(650) 991-5630 (650) 216-2196	LS4524@att.com MT1276@att.com CM1463@att.com
COMCAST		JEFF CASTANEDA DEREK NIPPE	(415) 377-1921 (415) 503-4505	Jeff_Castaneda@cable.comcast.com
PG&E	SERVICE PLANNING CONSTRUCTION	DANA SOUZA BILL RUSSO	(415) 757-8485 (415) 695-3330	D2GV@pge.com
CLEAR CHANNEL (BUS SHELTERS)		NICHOLAS FAGUNDES ASHLEY KIRCHNER MARGEUX CASILLAS	(925) 518-7042 (510) 446-7259	NicholasFagundes.ncs@comcast.net AshleyKirchner.ncs@comcast.net MargeauxCasillas@clearchannel.com
ZAYO/ABOVENET (MFN FACILITIES)		ALLEN LEHEW	(415) 265-3189	Allen.Lehew@zayo.com
WAVE (ASTOUND)		KEN HAWKINS	(925) 332-7806	khawkins@wavebroadband.com
USPS MAILBOXES			(415) 550-5248	

NO.	DATE	DESCRIPTION	BY	APP.
TABLE OF REVISIONS				
THIS DRAWING WAS LAST MODIFIED: 02/03/23 16:31, BY: EHADDAD				

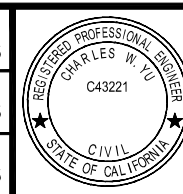
REFERENCE INFORMATION & FILE NO. OF SURVEYS



BUREAU OF ENGINEERING
CITY & COUNTY OF SAN FRANCISCO
SAN FRANCISCO PUBLIC WORKS
49 SOUTH VAN NESS AVENUE, SUITE 800
SAN FRANCISCO, CA 94103

Acting Section Mgr:	DEANNA CALLEROS
Deputy Bureau Mgr:	FERNANDO CISNEROS
Acting Bureau Mgr:	IQBAL DHAPA

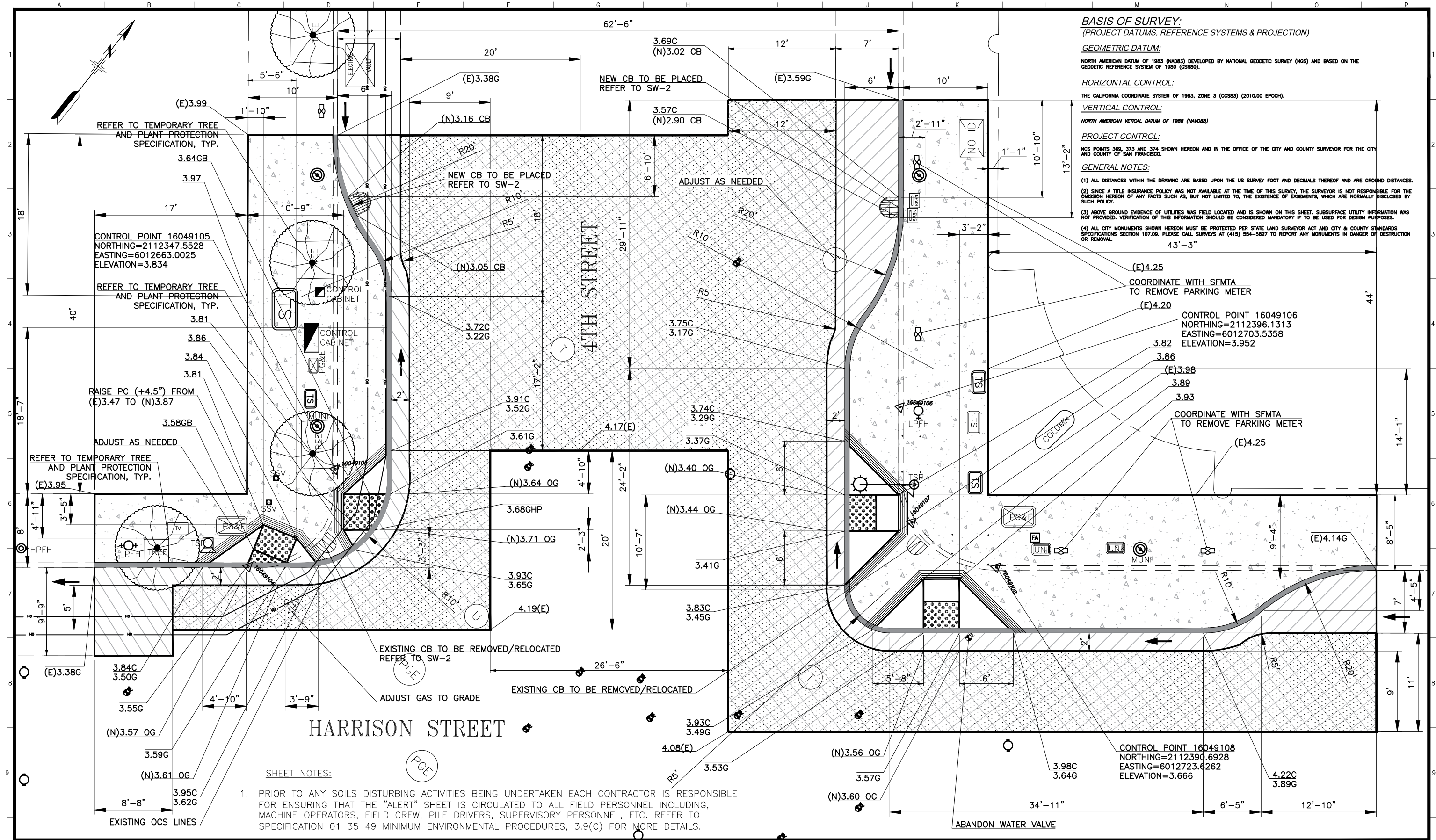
Date:	DESIGNED: DATE:	E.HADDAD 2/23
	DRAWN: DATE:	E.HADDAD 2/23
	CHECKED: DATE:	C.YU 2/23



SCALE:	N/A
SHEET OF SHEETS	3 OF 12

PW TRANSIT AS-NEEDED CONTRACT NO.2 (GENERAL AS-NEEDED (GAN) CONTRACT G20) CSO#2	
GENERAL NOTES	

CONTRACT NO.	000005177
DRAWING NO.	R-G8
FILE NO.	120,945
REV. NO.	0



BASIS OF SURVEY:
(PROJECT DATUMS, REFERENCE SYSTEMS & PROJECTION)

GEOMETRIC DATUM:
NORTH AMERICAN DATUM OF 1983 (NAD83) DEVELOPED BY NATIONAL GEODETIC SURVEY (NGS) AND BASED ON THE GEODETIC REFERENCE SYSTEM OF 1980 (GSR80).

HORIZONTAL CONTROL:
THE CALIFORNIA COORDINATE SYSTEM OF 1983, ZONE 3 (CCS83) (2010.00 EPOCH).

VERTICAL CONTROL:
NORTH AMERICAN VERTICAL DATUM OF 1988 (NAVD88)

PROJECT CONTROL:
NCS POINTS 369, 373 AND 374 SHOWN HEREON AND IN THE OFFICE OF THE CITY AND COUNTY SURVEYOR FOR THE CITY AND COUNTY OF SAN FRANCISCO.

GENERAL NOTES:

- (1) ALL DISTANCES WITHIN THE DRAWING ARE BASED UPON THE US SURVEY FOOT AND DECIMALS THEREOF AND ARE GROUND DISTANCES.
- (2) SINCE A TITLE INSURANCE POLICY WAS NOT AVAILABLE AT THE TIME OF THIS SURVEY, THE SURVEYOR IS NOT RESPONSIBLE FOR THE OMISSION HEREON OF ANY FACTS SUCH AS, BUT NOT LIMITED TO, THE EXISTENCE OF EASEMENTS, WHICH ARE NORMALLY DISCLOSED BY SUCH POLICY.
- (3) ABOVE GROUND EVIDENCE OF UTILITIES WAS FIELD LOCATED AND IS SHOWN ON THIS SHEET. SUBSURFACE UTILITY INFORMATION WAS NOT PROVIDED. VERIFICATION OF THIS INFORMATION SHOULD BE CONSIDERED MANDATORY IF TO BE USED FOR DESIGN PURPOSES.
- (4) ALL CITY MONUMENTS SHOWN HEREON MUST BE PROTECTED PER STATE LAND SURVEYOR ACT AND CITY & COUNTY STANDARDS SPECIFICATIONS SECTION 107.09. PLEASE CALL SURVEYS AT (415) 554-5827 TO REPORT ANY MONUMENTS IN DANGER OF DESTRUCTION OR REMOVAL.

SHEET NOTES:

1. PRIOR TO ANY SOILS DISTURBING ACTIVITIES BEING UNDERTAKEN EACH CONTRACTOR IS RESPONSIBLE FOR ENSURING THAT THE "ALERT" SHEET IS CIRCULATED TO ALL FIELD PERSONNEL INCLUDING, MACHINE OPERATORS, FIELD CREW, PILE DRIVERS, SUPERVISORY PERSONNEL, ETC. REFER TO SPECIFICATION 01 35 49 MINIMUM ENVIRONMENTAL PROCEDURES, 3.9(C) FOR MORE DETAILS.

NO.	DATE	DESCRIPTION	BY	APP.
TABLE OF REVISIONS				
THIS DRAWING WAS LAST MODIFIED: 02/08/23 08:54, BY: EHADDAD				

REFERENCE INFORMATION & FILE NO. OF SURVEYS

Survey Date: 7/6/2016
DPW 2016-049



BUREAU OF ENGINEERING
CITY & COUNTY OF SAN FRANCISCO
SAN FRANCISCO PUBLIC WORKS
49 SOUTH VAN NESS AVENUE, SUITE 800
SAN FRANCISCO, CA 94103

Date:

DESIGNED: DATE: E.HADDAD 6/19

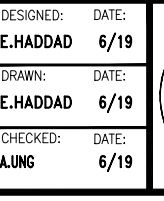
DRAWN: DATE: E.HADDAD 6/19

CHECKED: DATE: A.LUNG 6/19

Acting Section Mgr: DEANNA CALLEROS

Deputy Bureau Mgr: FERNANDO CISNEROS

Acting Bureau Mgr: IQBAL DHAPA



SCALE: 1" = 5'

SHEET OF SHEETS: 4 OF 12

PW TRANSIT AS-NEEDED CONTRACT NO.2
(GENERAL AS-NEEDED (GAN) CONTRACT G20)
CSO#2

CURB RAMP DETAILS
4TH STREET AND HARRISON STREET (NORTH)

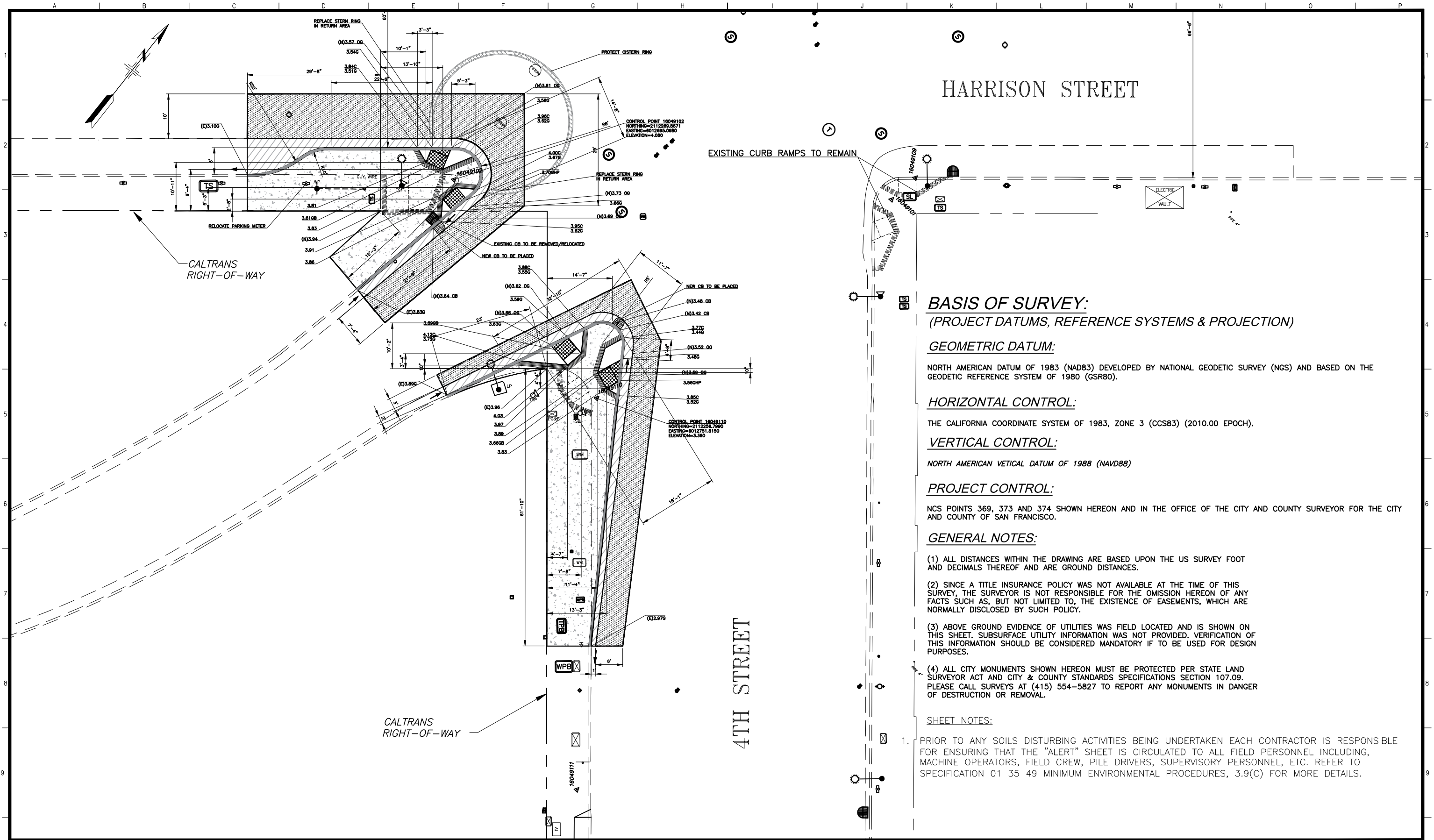
CONTRACT NO. 000005177

DRAWING NO. CR-9

FILE NO. 120,946

REV. NO.

Drawing Path: V:\1280L PW Muni - Forward - As-Needed - 02/08/23 08:54, BY: EHADDAD
 Plot Time: Thu, 09 Feb 2023 10:44am
 Model Units: Undefined
 Files: 4th&Harrison South Corners\CAD Files\4th&Harrison (original info 2824)\4th&Harrison2\Final.dwg, Login: EHADDAD



BASIS OF SURVEY:
 (PROJECT DATUMS, REFERENCE SYSTEMS & PROJECTION)

GEOMETRIC DATUM:

NORTH AMERICAN DATUM OF 1983 (NAD83) DEVELOPED BY NATIONAL GEODETIC SURVEY (NGS) AND BASED ON THE GEODETIC REFERENCE SYSTEM OF 1980 (GSR80).

HORIZONTAL CONTROL:

THE CALIFORNIA COORDINATE SYSTEM OF 1983, ZONE 3 (CCS83) (2010.00 EPOCH).

VERTICAL CONTROL:

NORTH AMERICAN VERTICAL DATUM OF 1988 (NAVD88)

PROJECT CONTROL:

NCS POINTS 369, 373 AND 374 SHOWN HEREON AND IN THE OFFICE OF THE CITY AND COUNTY SURVEYOR FOR THE CITY AND COUNTY OF SAN FRANCISCO.

GENERAL NOTES:

- (1) ALL DISTANCES WITHIN THE DRAWING ARE BASED UPON THE US SURVEY FOOT AND DECIMALS THEREOF AND ARE GROUND DISTANCES.
- (2) SINCE A TITLE INSURANCE POLICY WAS NOT AVAILABLE AT THE TIME OF THIS SURVEY, THE SURVEYOR IS NOT RESPONSIBLE FOR THE OMISSION HEREON OF ANY FACTS SUCH AS, BUT NOT LIMITED TO, THE EXISTENCE OF EASEMENTS, WHICH ARE NORMALLY DISCLOSED BY SUCH POLICY.
- (3) ABOVE GROUND EVIDENCE OF UTILITIES WAS FIELD LOCATED AND IS SHOWN ON THIS SHEET. SUBSURFACE UTILITY INFORMATION WAS NOT PROVIDED. VERIFICATION OF THIS INFORMATION SHOULD BE CONSIDERED MANDATORY IF TO BE USED FOR DESIGN PURPOSES.
- (4) ALL CITY MONUMENTS SHOWN HEREON MUST BE PROTECTED PER STATE LAND SURVEYOR ACT AND CITY & COUNTY STANDARDS SPECIFICATIONS SECTION 107.09. PLEASE CALL SURVEYS AT (415) 554-5827 TO REPORT ANY MONUMENTS IN DANGER OF DESTRUCTION OR REMOVAL.

SHEET NOTES:

1. PRIOR TO ANY SOILS DISTURBING ACTIVITIES BEING UNDERTAKEN EACH CONTRACTOR IS RESPONSIBLE FOR ENSURING THAT THE "ALERT" SHEET IS CIRCULATED TO ALL FIELD PERSONNEL INCLUDING, MACHINE OPERATORS, FIELD CREW, PILE DRIVERS, SUPERVISORY PERSONNEL, ETC. REFER TO SPECIFICATION 01 35 49 MINIMUM ENVIRONMENTAL PROCEDURES, 3.9(C) FOR MORE DETAILS.

NO.	DATE	DESCRIPTION	BY	APP.
TABLE OF REVISIONS				

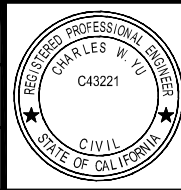
REFERENCE INFORMATION & FILE NO. OF SURVEYS
 Survey Date: 7/6/2016
 DPW 2016-049



BUREAU OF ENGINEERING
 CITY & COUNTY OF SAN FRANCISCO
SAN FRANCISCO PUBLIC WORKS
 49 SOUTH VAN NESS AVENUE, SUITE 800
 SAN FRANCISCO, CA 94103

Date:
 Acting Section Mgr: DEANNA CALLEROS
 Deputy Bureau Mgr: FERNANDO CISNEROS
 Acting Bureau Mgr: IQBAL DHAPA

DESIGNED: DATE: E.HADDAD 6/19
 DRAWN: DATE: E.HADDAD 6/19
 CHECKED: DATE: C.YU 6/19



SCALE:
 1" = 5'
 SHEET OF SHEETS
 5 OF 12

PW TRANSIT AS-NEEDED CONTRACT NO.2
 (GENERAL AS-NEEDED (GAN) CONTRACT G20)
 CSO#2
CURB RAMP DETAILS
4TH STREET AND HARRISON STREET (SOUTH)

CONTRACT NO. 000005177
 DRAWING NO. CR-10
 FILE NO. 120,947
 REV. NO.

LEGEND

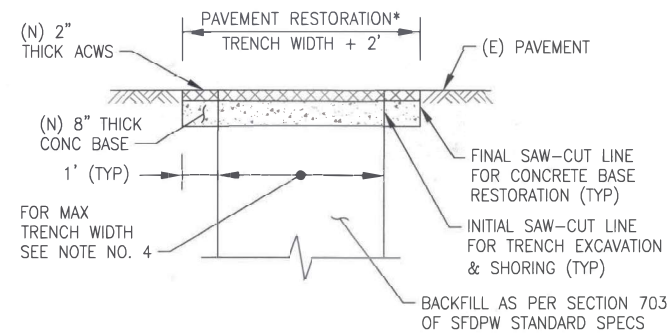
- | | |
|-------------|----------------------------------|
| SIZE & TYPE | EXISTING SEWER OR CULVERT |
| | EXISTING MH |
| | EXISTING CB |
| SIZE & TYPE | NEW SEWER OR CULVERT |
| | NEW MH PER SFDPW STD PLAN 87,181 |
| | NEW CB PER SFDPW STD PLAN 87,187 |
| | REMOVE (E) CB |
| | ABANDON (E) CB |
| | APPROXIMATE PAVEMENT SURFACE |
| | DIRECTION OF FLOW |
| | PLUG EXISTING FACILITIES |

ABBREVIATIONS

- | | |
|----------|--|
| ± | PLUS OR MINUS |
| ABN | ABANDONED |
| ACWS | ASPHALT CONCRETE WEARING SURFACE |
| AVE | AVENUE |
| AT&T | AT&T FACILITIES |
| AWSS | AUXILIARY WATER SUPPLY SYSTEM |
| CB | CATCHBASIN |
| CONC | CONCRETE |
| DEA | DEACTIVATED |
| DIA OR Ø | DIAMETER |
| DWG | DRAWING |
| (E) | EXISTING |
| EL | ELEVATION |
| ELEC | ELECTRIC FACILITIES |
| G | GAS FACILITIES |
| INV | INVERT |
| ISP | IRON STONE PIPE |
| LF | LINEAR FEET |
| MAX | MAXIMUM |
| MH | MANHOLE |
| MIN | MINIMUM |
| (N) | NEW |
| NO. | NUMBER |
| NTS | NOT TO SCALE |
| OD | OUTSIDE DIAMETER |
| PL | PROPERTY LINE |
| RCP | REINFORCED CONCRETE PIPE |
| S.F. | SAN FRANCISCO |
| SFDPW | SAN FRANCISCO DEPARTMENT OF PUBLIC WORKS |
| SL | SLOPE |
| SPECS | SPECIFICATIONS |
| ST | STREET |
| STD | STANDARD |
| (TYP) | TYPICAL |
| VCP | VITRIFIED CLAY PIPE |
| W | WATER FACILITIES |
| W/ | WITH |

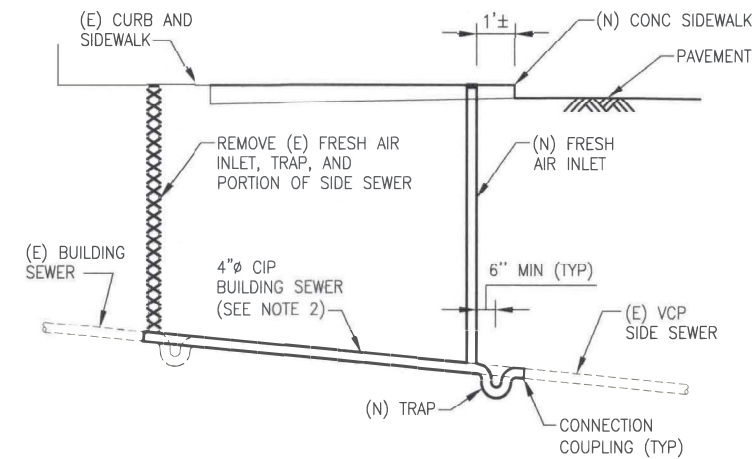
GENERAL NOTES

- ELEVATIONS ARE IN REFERENCE TO S.F. CITY DATUM.
- REFER TO CR-DRAWINGS FOR EXACT LOCATION OF (N) CATCHBASINS AND CURB DIMENSIONS.
- THE UTILITY DATA ON THIS SHEET HAS BEEN COMPILED FROM INFORMATION FURNISHED BY THE VARIOUS UTILITY AGENCIES, AND THE CITY DOES NOT GUARANTEE THEIR ACCURACY. THIS DATA IS INCLUDED ONLY FOR THE ASSISTANCE OF THE CONTRACTOR. UTILITY LOCATIONS SHOWN ON THIS DRAWING ARE APPROXIMATE AND NOT ALL UTILITIES ARE SHOWN. CONTRACTOR SHALL VERIFY LOCATIONS PRIOR TO EXCAVATION AND PROVIDE PROTECTION AND STRUCTURAL SUPPORT WITHIN TRENCHES AS NECESSARY.
- MAXIMUM TRENCH WIDTH SHALL BE THE LARGER OUTSIDE DIMENSION OF THE NEW OR EXISTING SEWER/STRUCTURE PLUS 1.5 FEET ON EACH SIDE.



TRENCH RESTORATION DETAIL FOR ASPHALT STREET

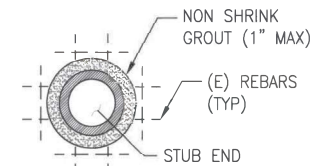
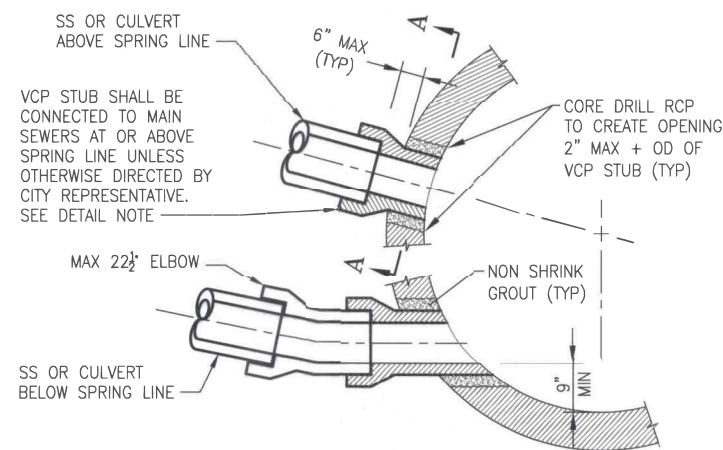
*LIMITS OF FINAL ACWS SHALL BE PER THIS DETAIL UNLESS PAVING DRAWINGS DELINEATE WIDER AREAS TO BE PAVED
PER EXCAVATION REGULATIONS, RESTORATION OF CONCRETE BASE MAY BE WIDER THAN SHOWN IN TRENCH RESTORATION DETAIL.



RELOCATION OF (E) SIDE SEWER TRAP AND FRESH AIR INLET ASSEMBLY

NOTES:

- FOR DETAILS OF SIDE SEWER FRESH AIR INLET AND TRAP, REFER TO SFDPW STD PLAN 87,196.
- WHEN THE (E) BUILDING SEWER SHOWN IN THE DETAIL IS LARGER THAN 4 inch diameter, THEN THE IDENTICAL SIZE OF (N) CIP AND TRAP SHALL BE USED.
- (E) VCP SIDE SEWER TO REMAIN UNLESS NOTED OTHERWISE ON SW-DRAWINGS OR IF REPLACEMENT IS DIRECTED BY THE CITY REPRESENTATIVE POST VIDEO INSPECTION.
- RESTORE ALL AFFECTED PANELS OF SIDEWALK.
- THE (N) SIDE SEWER FRESH AIR INLET SHALL BE CONSTRUCTED CLOSE TO (N) FACE OF CURB PER SFDPW STD PLAN 87,196.



SECTION A

DETAIL NOTE:

IF AFTER VERIFYING THE DEPTH OF SS AT VENT, IT IS DETERMINED THAT THE SS CANNOT BE RECONSTRUCTED WITH A MINIMUM SLOPE OF 2% FOR CONNECTION TO (N) RCP MAIN AT OR ABOVE THE SPRING LINE, THEN CITY REPRESENTATIVE MAY DIRECT THE CONTRACTOR TO CONNECT BELOW SPRING LINE PER DETAIL PROVIDED ON THIS DRAWING.

SS OR CULVERT CONNECTION DETAIL FOR RCP

NO.	DATE	DESCRIPTION	BY	APP.
TABLE OF REVISIONS				

REFERENCE INFORMATION & FILE NO. OF SURVEYS



BUREAU OF ENGINEERING
CITY & COUNTY OF SAN FRANCISCO
SAN FRANCISCO PUBLIC WORKS
30 VAN NESS AVENUE, 5TH FLOOR
SAN FRANCISCO, CA 94102 - 6028

Section Mgr: LESLEY WONG	Date: Nov 4, 2019
Deputy Bureau Mgr: FERNANDO CISNEROS	Date: 11/4/19
Acting Bureau Mgr: IQBAL DHAPA	Date: 11/4/19

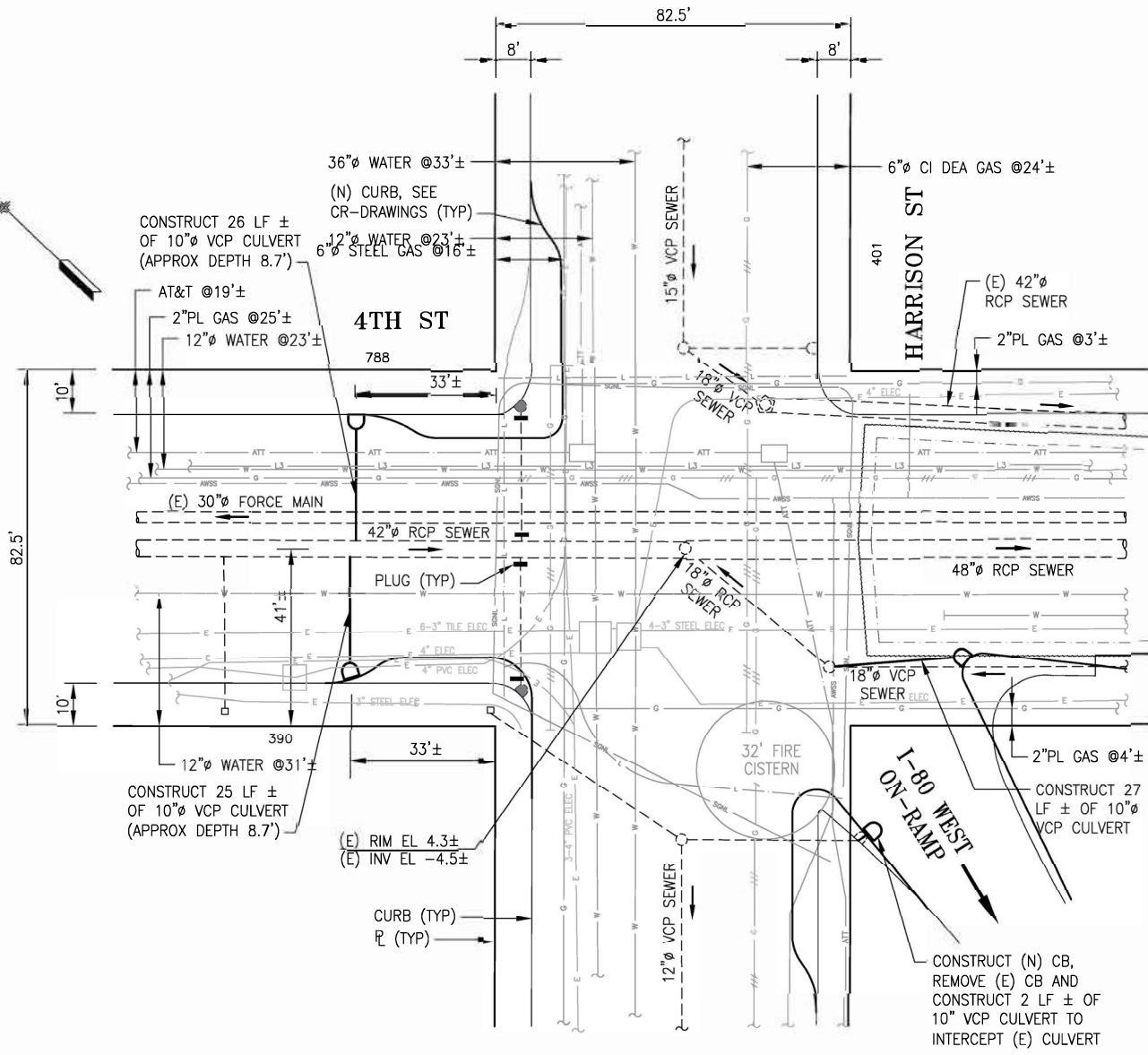
DESIGNED: J.FOON	DATE: 11/2019
DRAWN: V.CHEUNG	DATE: 11/2019
CHECKED: D.CHAN	DATE: 11/2019



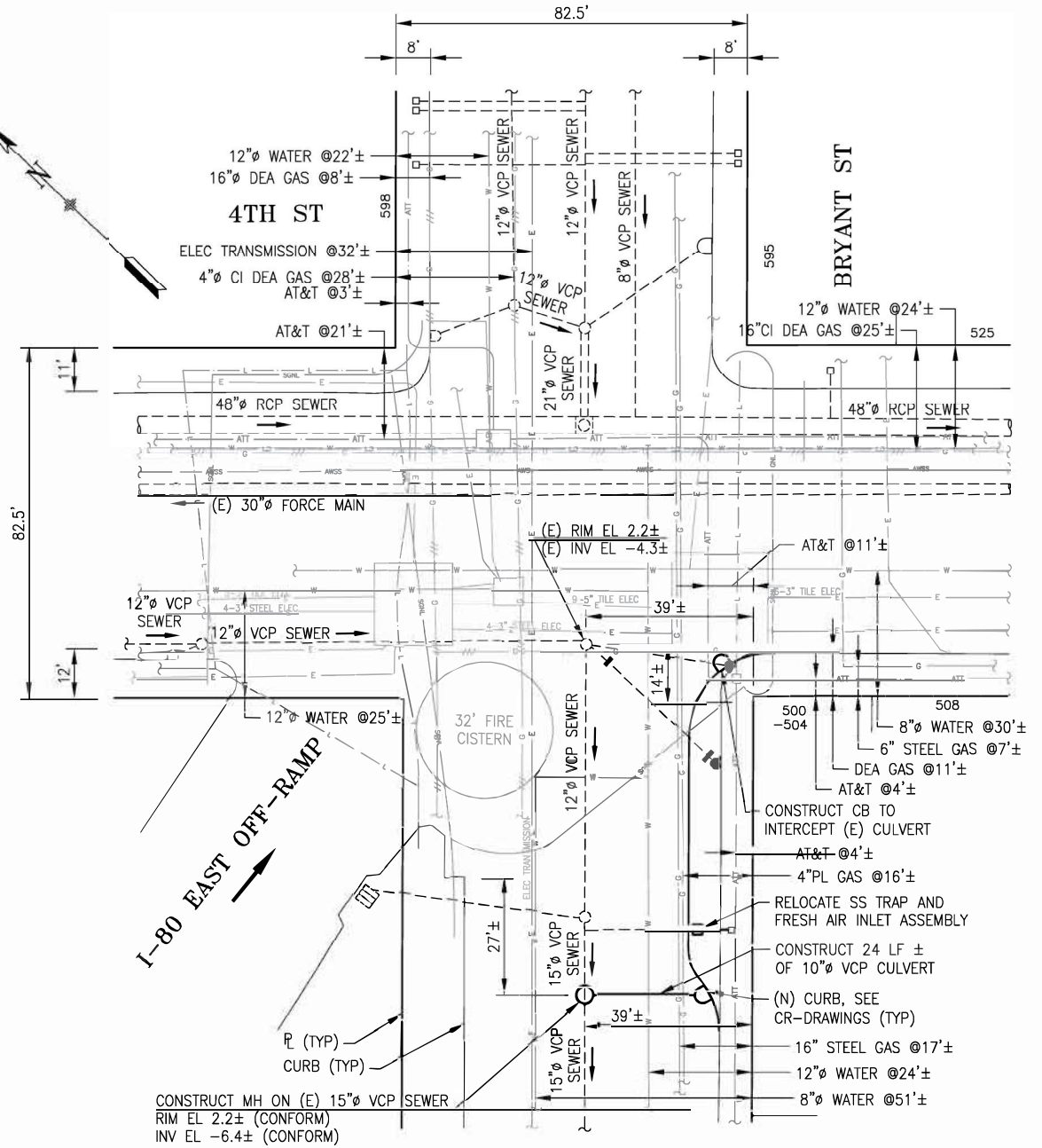
SCALE:	NONE
SHEET OF SHEETS:	7 OF 12

PW TRANSIT AS-NEEDED CONTRACT NO.2 (GENERAL AS-NEEDED (GAN) CONTRACT G20) CSO #2	
4TH STREET AT INTERSECTIONS OF HARRISON ST & BRYANT ST DRAINAGE WORK PLAN	

CONTRACT NO. 000005177
DRAWING NO. SW-G
FILE NO. 120,949
REV. NO. 0



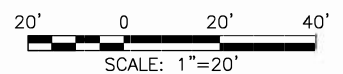
PLAN - 4TH ST AND HARRISON ST
SCALE: 1"=20'



PLAN - 4TH ST AND BRYANT ST
SCALE: 1"=20'

NOTES:

- REFER TO CR-DRAWINGS FOR EXACT LOCATION OF (N) CATCHBASINS AND CURB DIMENSIONS
- FOR DETAILS OF SIDE SEWER FRESH AIR INLET AND TRAP, REFER TO SFDPW STD PLAN 87,196.



NO.	DATE	DESCRIPTION	BY	APP.
TABLE OF REVISIONS				

REFERENCE INFORMATION & FILE NO. OF SURVEYS
56,508
62,179
62,180
74,562
A-375
A-641
A-22726



BUREAU OF ENGINEERING
CITY & COUNTY OF SAN FRANCISCO
SAN FRANCISCO PUBLIC WORKS
30 VAN NESS AVENUE, 5TH FLOOR
SAN FRANCISCO, CA 94102 - 6028

Section Mgr: <i>Wai K. Chan</i>	Date: <i>Nov 4, 2019</i>
Deputy Bureau Mgr: <i>Fernando Cisneros</i>	<i>11/4/19</i>
Acting Bureau Mgr: <i>Josbal Hapa</i>	<i>11/4/19</i>

DESIGNED: <i>J. Foon</i>	DATE: <i>11/2019</i>
DRAWN: <i>V. Cheung</i>	DATE: <i>11/2019</i>
CHECKED: <i>D. Chan</i>	DATE: <i>11/2019</i>



SCALE:	AS NOTED
SHEET OF SHEETS:	8 OF 12

PW TRANSIT AS-NEEDED CONTRACT NO. 2
(GENERAL AS-NEEDED (GAN) CONTRACT G20) CSO #2

4TH STREET AT INTERSECTIONS OF HARRISON ST & BRYANT ST DRAINAGE WORK PLAN

CONTRACT NO.	000005177
DRAWING NO.	SW-1
FILE NO.	120,950
REV. NO.	0

S Y M B O L S

	FURNISH & INSTALL	EXISTING	R/C U.O.N.		FURNISH & INSTALL	EXISTING	R/C U.O.N.		FURNISH & INSTALL	EXISTING	R/C U.O.N.	
				CONDUIT				TRAFFIC SIGNAL OR STREET LIGHT POLE WITH FOUNDATION.				BASEMENT PULL BOX
				CUT (E) CONDUIT. COUPLE NEW CONDUIT OF SAME SIZE AS EXISTING.				R/S (E) POLE, R/C (E) FOUNDATION F/I NEW POLE AND FOUNDATION IN PLACE				TYPE 36X OR TYPE 48X PULL BOX WITH EXTENSION.
				STUB OUT CONDUIT WITH PLUG				R/S (E) POLE, F/I NEW POLE IN (E) FOUNDATION				TYPE 36X OR TYPE 48X TRAFFIC RATED PULL BOX EXCEPT WITH BOLT DOWN STEEL COVER.
				TRAFFIC SIGNAL INTERCONNECT CONDUIT				MUNI POLE				CITY SERVICE PULL BOX
				VEHICLE SIGNAL FACE - 8"(203.2 mm)				R/C EX MUNI POLE AND FOUNDATION F/I NEW MUNI POLE AND FOUNDATION IN PLACE				PG&E SERVICE PULL BOX
				VEHICLE SIGNAL FACE - 8"(203.2 mm) BACK PLATE INSTALLED ON SIGNAL FACE				P. G. & E. SERVICE POLE				PG&E METER PEDESTAL (SERVICE EQUIPMENT ENCLOSURE) AND FOUNDATION PER SFMTA STR-8404
				VEHICLE SIGNAL FACE - 12"(304.8 mm)				UTILITY POLE (WOOD OR STEEL)				A.T.&T. MANHOLE
				VEHICLE SIGNAL FACE - 12"(304.8 mm) BACK PLATE INSTALLED ON SIGNAL FACE				F/I 3"(50.8 mm) CONDUIT STUBBED UP 1'(304.8 mm) ON (E) P.G.&E. POLE				PG&E MANHOLE
				VEHICLE SIGNAL FACE - 12"(304.8 mm), WITH ARROWS				FREEWAY PIER				VIDEO DETECTION SYSTEM CAMERA (VDS)
				MAST ARM MOUNTED SIGNAL FACE. VEHICLE SIGNAL FACE - 12"(304.8 mm), BACK PLATE INSTALLED ON SIGNAL FACE				TRAFFIC SIGN POLE				CLOSED CIRCUIT TELEVISION CAMERA (CCTV CAMERA)
				LEFT OR RIGHT ANGLE VISOR				TREE				VARIABLE MESSAGE SIGN (VMS)
				PEDESTRIAN SIGNAL				BOLLARD OR GUARD POST				PG&E VAULT
				8" BIKE SIGNAL U.O.N.				PARKING METER				CURB RAMP (SEE CR-DWGS)
				12" BIKE SIGNAL U.O.N.				FIRE OR POLICE CALL BOX				SURVEY MONUMENT
				PEDESTRIAN FLASHING BEACON				USPS MAIL BOX				PG&E VAULT
				NO RIGHT TURN SIGNAL				PEDESTRIAN BARRICADE				CURB RAMP (SEE CR-DWGS)
				PEDESTRIAN PUSH BUTTON				(E) FIRE HYDRANT (LP = LOW PRESSURE) (HP = HIGH PRESSURE)				SURVEY MONUMENT
				"M" OR "M-SF" FOUNDATION				VALVE				PG&E VAULT
				OTHER CONTROLLER FOUNDATION TYPE "G" CONTROLLER FOUNDATION TYPE				TRAFFIC SIGNAL PAVEMENT LOOP				PG&E VAULT
				TYPE 350I-ATC CONTROLLER CABINET FOUNDATION PER SFMTA STR-8404				RAILROAD GATE POLE WITH R/R SIGNALS				PG&E VAULT
				TYPE 352I-ATC CONTROLLER CABINET FOUNDATION PER SFMTA STR-8404				GROUND ROD-5/8" ØX10'-0" (15.88 mm X 3048 mm)				PG&E VAULT
				STREET LIGHT WITH 6' LUMINAIRE ARM				VIDEO CAMERA				PG&E VAULT
				TRAFFIC RATED HAND HOLE CHRISTY G5 OR EQUAL, NO LOCKING RING REQUIRED.				PULL BOX TYPE I SL: STREET LIGHT, TS: TRAFFIC SIGNAL				PG&E VAULT
				RED LIGHT CAMERA				PULL BOX TYPE III				PG&E VAULT
				RED LIGHT CAMERA AUXILIARY FLASH				PULL BOX TYPE IV				PG&E VAULT
				PEDESTRIAN FLASHING CROSSWALK				TRAFFIC SIGNAL PRIORITY EQUIPMENT				PG&E VAULT

**NOT ALL SYMBOLS
USED IN PLANS**

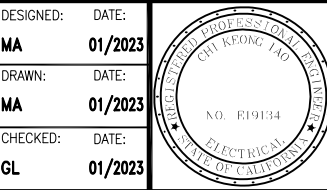
NO.	DATE	DESCRIPTION	BY	APP.
TABLE OF REVISIONS				
THIS DRAWING WAS LAST MODIFIED: 01/31/23 10:19, BY: MAung				

REFERENCE INFORMATION
& FILE NO. OF SURVEYS



BUREAU OF ENGINEERING
CITY & COUNTY OF SAN FRANCISCO
SAN FRANCISCO PUBLIC WORKS
49 SOUTH VAN NESS AVENUE, 8TH FLOOR
SAN FRANCISCO, CA 94103

Acting Section Mgr:	CHI IAO	Date:	
Acting Deputy Bureau Mgr:	LESLEY WONG	DESIGNED: DATE:	MA 01/2023
Acting Bureau Mgr:	IOBAL DHAPA	DRAWN: DATE:	MA 01/2023
		CHECKED: DATE:	GL 01/2023



SCALE:
NONE

SHEET OF SHEETS
9 OF 12

**TRANSIT AS-NEEDED CONTRACT NO.2
(GENERAL AS-NEEDED (GAN) CONTRACT G20)
CSO #2**

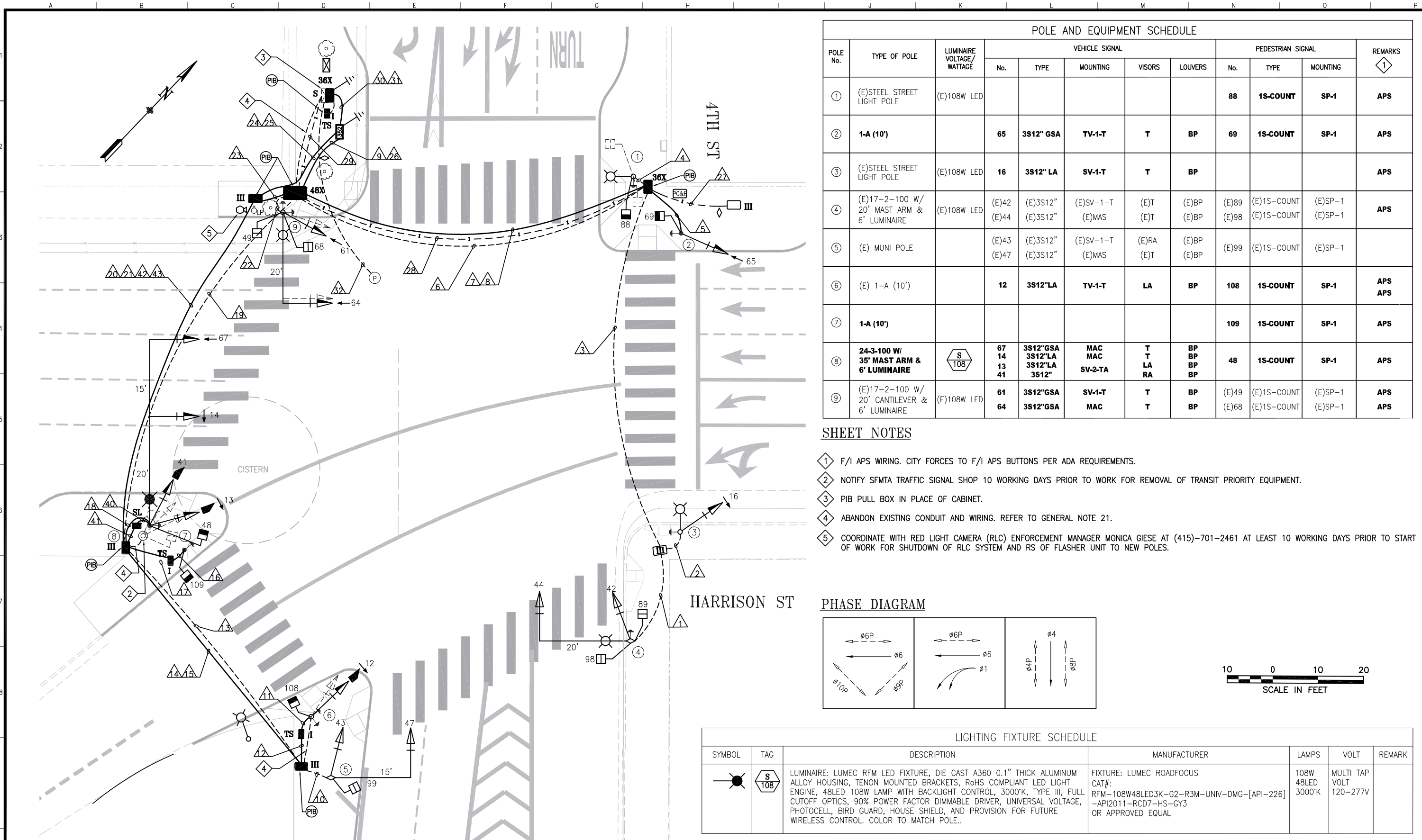
**TRAFFIC SIGNAL
SYMBOLS**

CONTRACT NO.
000005177

DRAWING NO.
ET-0.1

FILE NO.
120,951

REV. NO.
0

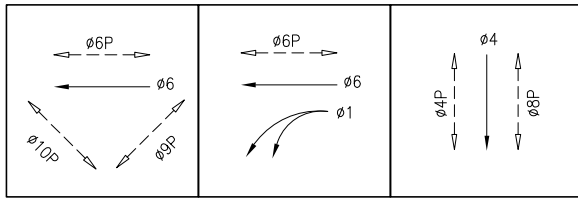


POLE AND EQUIPMENT SCHEDULE											
POLE No.	TYPE OF POLE	LUMINAIRE VOLTAGE/WATTAGE	VEHICLE SIGNAL					PEDESTRIAN SIGNAL			REMARKS
			No.	TYPE	MOUNTING	VISORS	LOUVERS	No.	TYPE	MOUNTING	
①	(E)STEEL STREET LIGHT POLE	(E)108W LED	88	1S-COUNT	SP-1					APS	
②	1-A (10')		65	3S12" GSA	TV-1-T	T	BP	69	1S-COUNT	SP-1	APS
③	(E)STEEL STREET LIGHT POLE	(E)108W LED	16	3S12" LA	SV-1-T	T	BP				APS
④	(E)17-2-100 W/ 20' MAST ARM & 6' LUMINAIRE	(E)108W LED	(E)42 (E)44	(E)3S12" (E)3S12"	(E)SV-1-T (E)MAS	(E)T (E)T	(E)BP (E)BP	(E)89 (E)98	(E)1S-COUNT (E)1S-COUNT	(E)SP-1 (E)SP-1	APS
⑤	(E) MUNI POLE		(E)43 (E)47	(E)3S12" (E)3S12"	(E)SV-1-T (E)MAS	(E)RA (E)T	(E)BP (E)BP	(E)99	(E)1S-COUNT	(E)SP-1	
⑥	(E) 1-A (10')		12	3S12"LA	TV-1-T	LA	BP	108	1S-COUNT	SP-1	APS APS
⑦	1-A (10')							109	1S-COUNT	SP-1	APS
⑧	24-3-100 W/ 35' MAST ARM & 6' LUMINAIRE	S 108	67 14 13 41	3S12"GSA 3S12"LA 3S12"LA 3S12"	MAC MAC SV-2-TA	T T LA RA	BP BP BP BP	48	1S-COUNT	SP-1	APS
⑨	(E)17-2-100 W/ 20' CANTILEVER & 6' LUMINAIRE	(E)108W LED	61 64	3S12"GSA 3S12"GSA	SV-1-T MAC	T T	BP BP	(E)49 (E)68	(E)1S-COUNT (E)1S-COUNT	(E)SP-1 (E)SP-1	APS APS

SHEET NOTES

- ① F/I APS WIRING. CITY FORCES TO F/I APS BUTTONS PER ADA REQUIREMENTS.
- ② NOTIFY SFMTA TRAFFIC SIGNAL SHOP 10 WORKING DAYS PRIOR TO WORK FOR REMOVAL OF TRANSIT PRIORITY EQUIPMENT.
- ③ PIB PULL BOX IN PLACE OF CABINET.
- ④ ABANDON EXISTING CONDUIT AND WIRING. REFER TO GENERAL NOTE 21.
- ⑤ COORDINATE WITH RED LIGHT CAMERA (RLC) ENFORCEMENT MANAGER MONICA GIESE AT (415)-701-2461 AT LEAST 10 WORKING DAYS PRIOR TO START OF WORK FOR SHUTDOWN OF RLC SYSTEM AND RS OF FLASHER UNIT TO NEW POLES.

PHASE DIAGRAM



LIGHTING FIXTURE SCHEDULE						
SYMBOL	TAG	DESCRIPTION	MANUFACTURER	LAMPS	VOLT	REMARK
	S 108	LUMINAIRE: LUMEC RFM LED FIXTURE, DIE CAST A360 0.1" THICK ALUMINUM ALLOY HOUSING, TENON MOUNTED BRACKETS, RoHS COMPLIANT LED LIGHT ENGINE, 48LED 108W LAMP WITH BACKLIGHT CONTROL, 3000°K, TYPE III, FULL CUTOFF OPTICS, 90% POWER FACTOR DIMMABLE DRIVER, UNIVERSAL VOLTAGE, PHOTOCCELL, BIRD GUARD, HOUSE SHIELD, AND PROVISION FOR FUTURE WIRELESS CONTROL. COLOR TO MATCH POLE..	FIXTURE: LUMEC ROADFOCUS CAT#: RFM-108W48LED3K-G2-R3M-UNIV-DMG-[API-226] -API2011-RCD7-HS-GY3 OR APPROVED EQUAL	108W 48LED 3000°K	MULTI TAP VOLT 120-277V	

NO.	DATE	DESCRIPTION	BY	APP.
TABLE OF REVISIONS				
THIS DRAWING WAS LAST MODIFIED: 02/01/23 18:19, BY: MAung				

REFERENCE INFORMATION & FILE NO. OF SURVEYS



BUREAU OF ENGINEERING
CITY & COUNTY OF SAN FRANCISCO
SAN FRANCISCO PUBLIC WORKS
49 SOUTH VAN NESS AVENUE, 8TH FLOOR
SAN FRANCISCO, CA 94103

Acting Section Mgr: CHI IAO
Acting Deputy Bureau Mgr: LESLEY WONG
Acting Bureau Mgr: IQBAL DHAPA

DESIGNED: SA/MA 01/2023
DRAWN: SA/MA 01/2023
CHECKED: DA/GL 01/2023



SCALE: AS SHOWN
SHEET OF SHEETS: 10 OF 12

TRANSIT AS-NEEDED CONTRACT NO.2
(GENERAL AS-NEEDED (GAN) CONTRACT G20)
CSO #2
**4th ST AND HARRISON ST
TRAFFIC SIGNAL PLAN**

CONTRACT NO. 000005177
DRAWING NO. ET-3.0
FILE NO. 120,952
REV. NO. 0

CONDUIT AND WIRING SCHEDULE (FURNISH AND INSTALL CONDUIT AND WIRES)

CONDUIT RUN NUMBER		△1	△2	△3	△4	△5	△6	△7	△8	△9	△10	△11	△12	△13	△14	△15	△16	△17	△18	△19	△20	△21	△22	△23	△24	△25	△26	△27	△28	△29	△30	△31	△32	△40	△41	△42	△43			
CONDUIT SIZE (INCH)		2	2	2	2	2	2	2	2	3	2	2	2	2	2	2	2	2	2	2	2	2	2	2	3	2	2	2	2	2	3	2	1/2	2	2	2	2			
NOTES		(E)	(E)	(E)	(E)		(E)				(E)									(E)		(E)							(E)	(E)	(E)			(E)	GRS	GRS	GRS	GRS		
NOTES							SP					SP								SP			SP		SP	SP	SP										SP			
POLE 4	VEH SIGNAL 44	3		3				3		3																														
POLE 4	VEH SIGNAL 42	3		3				3		3																														
POLE 4	PED SIGNAL 89	2		2				2		2																														
POLE 4	PED SIGNAL 98	2		2				2		2																														
POLE 4	APS PPB FOR XING 4TH ST SS	2		2				2		2																														
POLE 3	VEH SIGNAL 16		3	3				3		3																														
POLE 3	APS PPB FOR XING HARRISON ST ES		2	2				2		2																														
POLE 1	PED SIGNAL 88				2				2	2																														
POLE 1	APS PPB FOR XING 4TH ST NS				2				2	2																														
POLE 2	VEH SIGNAL 65					3			3	3																														
POLE 2	PED SIGNAL 69					2			2	2																														
POLE 2	APS FOR PPB XING HARRISON ST ES					2			2	2																														
POLE 5	VEH SIGNAL 47										3				3							3																		
POLE 5	VEH SIGNAL 43										3				3							3																		
POLE 5	PED SIGNAL 99										2				2							2																		
POLE 6	VEH SIGNAL 12											3	3			3						3																		
POLE 6	PED SIGNAL 108											2	2			2						2																		
POLE 6	APS PPB FOR XING I-80 ONRAMP											2	2			2						2																		
POLE 6	APS PPB FOR XING 4TH ST SS											2	2			2						2																		
POLE 7	PED SIGNAL 109																2	2																						
POLE 7	APS PPB FOR XING I-80 ONRAMP																2	2																						
POLE 8	VEH SIGNAL 67																			3			3																	
POLE 8	VEH SIGNAL 14																			3			3																	
POLE 8	VEH SIGNAL 41																			3			3																	
POLE 8	VEH SIGNAL 13																			3			3																	
POLE 8	PED SIGNAL 48																			2			2																	
POLE 8	APS PPB FOR XING HARRISON ST WS																			2			2																	
POLE 9	VEH SIGNAL 64												3																											
POLE 9	VEH SIGNAL 61													3																										
POLE 9	PED SIGNAL 49																																							
POLE 9	PED SIGNAL 68																																							
POLE 9	APS PPB FOR XING 4TH ST NS																																							
POLE 9	APS PPB FOR XING HARRISON ST WS																																							
	#14 NEUTRAL	4	1		1	2		4		12	3	2	2					1	1	4																				
	#14 SPARE			3				3		3												3	3																	
	TOTAL #14 WIRES	16	6	20	5	9		24	11	57	11	11	11		11	9	5	5	20			20	23	18																
	#10 WIRES NEUTRAL			1				1	1	2					1	1						1	1																	
	#10 WIRES STREET LIGHT	2	2		2																														2					
	#8 WIRES STREET LIGHT			2																																2	2			
	#8 WIRES (120 V SERVICE)																																				(E)	(E)		
	12/C INTERCONNECT																																				(E)	(E)	(E)	(E)

NO.	DATE	DESCRIPTION	BY	APP.
TABLE OF REVISIONS				
THIS DRAWING WAS LAST MODIFIED: 01/31/23 10:41, BY: MAung				

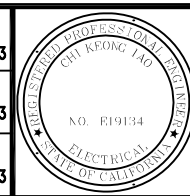
REFERENCE INFORMATION
& FILE NO. OF SURVEYS



BUREAU OF ENGINEERING
CITY & COUNTY OF SAN FRANCISCO
SAN FRANCISCO PUBLIC WORKS
49 SOUTH VAN NESS AVENUE, 8TH FLOOR
SAN FRANCISCO, CA 94103

Date:
Acting Section Mgr: CHI IAO
Acting Deputy Bureau Mgr: LESLEY WONG
Acting Bureau Mgr: IOBAL DHAPA

DESIGNED: DATE: SA/MA 01/2023
DRAWN: DATE: SA/MA 01/2023
CHECKED: DATE: DA/GL 01/2023

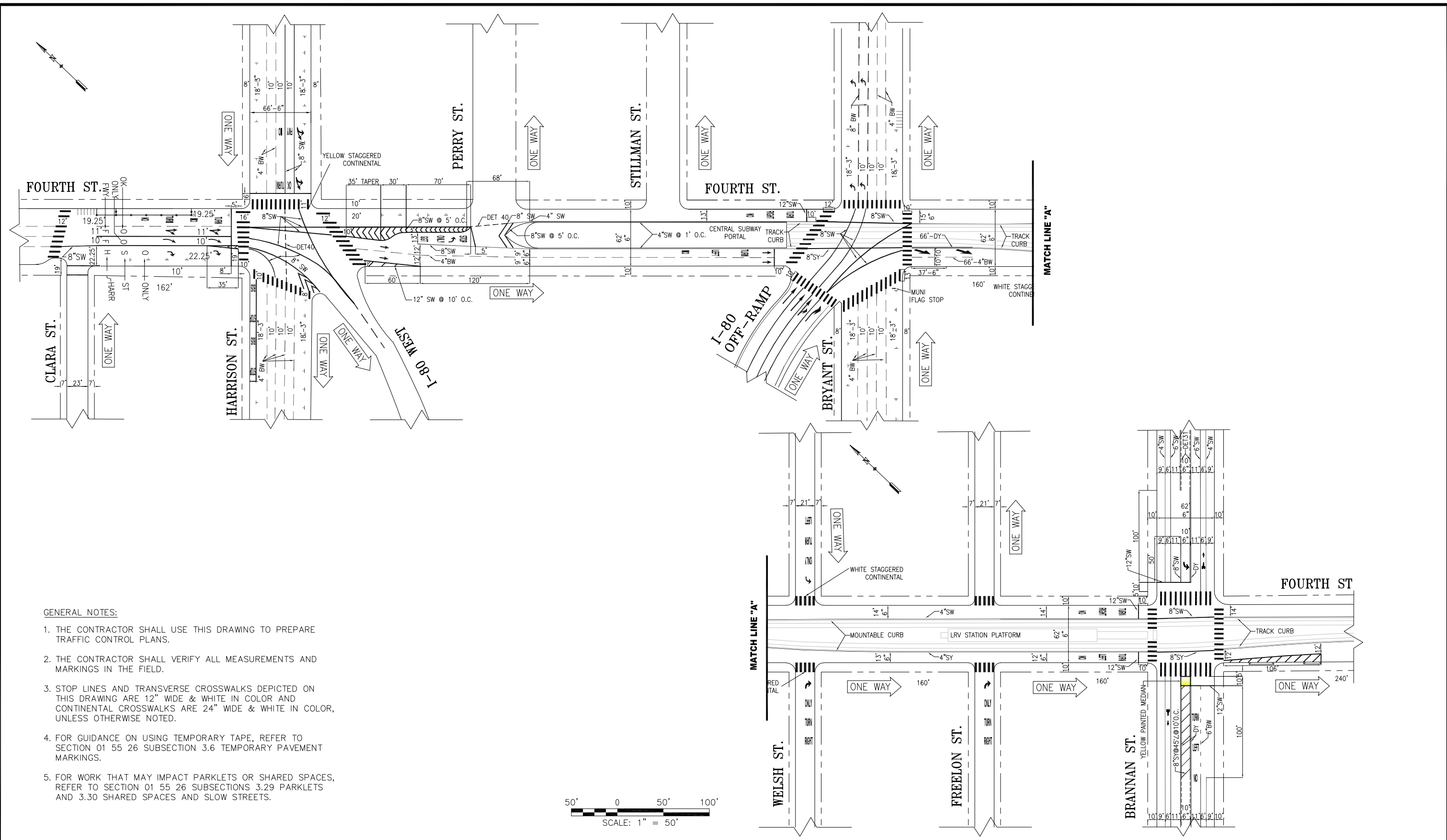


SCALE: NONE
SHEET OF SHEETS: 11 OF 12

TRANSIT AS-NEEDED CONTRACT NO.2
(GENERAL AS-NEEDED (GAN) CONTRACT G20)
CSO #2

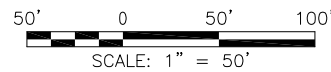
4th ST AND HARRISON ST
CONDUIT AND WIRING SCHEDULE

CONTRACT NO. 0000005177
DRAWING NO. ET-3.1
FILE NO. 120,953
REV. NO. 0

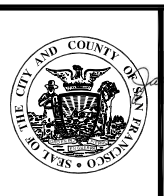


GENERAL NOTES:

1. THE CONTRACTOR SHALL USE THIS DRAWING TO PREPARE TRAFFIC CONTROL PLANS.
2. THE CONTRACTOR SHALL VERIFY ALL MEASUREMENTS AND MARKINGS IN THE FIELD.
3. STOP LINES AND TRANSVERSE CROSSWALKS DEPICTED ON THIS DRAWING ARE 12" WIDE & WHITE IN COLOR AND CONTINENTAL CROSSWALKS ARE 24" WIDE & WHITE IN COLOR, UNLESS OTHERWISE NOTED.
4. FOR GUIDANCE ON USING TEMPORARY TAPE, REFER TO SECTION 01 55 26 SUBSECTION 3.6 TEMPORARY PAVEMENT MARKINGS.
5. FOR WORK THAT MAY IMPACT PARKLETS OR SHARED SPACES, REFER TO SECTION 01 55 26 SUBSECTIONS 3.29 PARKLETS AND 3.30 SHARED SPACES AND SLOW STREETS.



NO.	DATE	DESCRIPTION	BY	APP
TABLE OF REVISIONS				
CHECK WITH TRACING TO SEE IF YOU HAVE LATEST REVISION				



DESIGNED BY:	E. TRAN	DATE:	09/2022
CHECKED BY:	D. VALLE-SCHWENK	DATE:	09/2022

APPROVED	
SENIOR ENGINEER	DATE:
CITY TRAFFIC ENGINEER	DATE:

SCALE:	1" = 50'
SHEET/SHEETS:	12 OF 12

TRANSIT AS-NEEDED CONTRACT NO. 2
EXISTING TRAFFIC STRIPING
FOURTH STREET
HARRISON STREET TO BRANNAN STREET

CONTRACT NO.	12801
DRAWING NO.	T - 4
FILE NO.	120,954
REV. NO.	0

FILE NAME: DATE: --/--/---



SAN FRANCISCO PLANNING DEPARTMENT

ENVIRONMENTAL EVALUATION APPLICATION COVER MEMO - PUBLIC PROJECTS ONLY

In accordance with Chapter 31 of the San Francisco Administrative Code, an appeal of an exemption determination can only be filed within 30 days of the project receiving the first approval action.

Please attach this memo along with all necessary materials to the Environmental Evaluation Application.

Project Address and/or Title:	SFMTA Order # 5646 for Public Hearing on 9/16/2016
Project Approval Action:	City Traffic Engineer / SFMTA Board
Will the approval action be taken at a noticed public hearing? <input checked="" type="checkbox"/> YES* <input type="checkbox"/> NO * If YES is checked, please see below.	

IF APPROVAL ACTION IS TAKEN AT A NOTICED PUBLIC HEARING, INCLUDE THE FOLLOWING CALENDAR LANGUAGE:

End of Calendar: CEQA Appeal Rights under Chapter 31 of the San Francisco Administrative Code If the Commission approves an action identified by an exemption or negative declaration as the Approval Action (as defined in S.F. Administrative Code Chapter 31, as amended, Board of Supervisors Ordinance Number 161-13), then the CEQA decision prepared in support of that Approval Action is thereafter subject to appeal within the time frame specified in S.F. Administrative Code Section 31.16. Typically, an appeal must be filed within 30 calendar days of the Approval Action. For information on filing an appeal under Chapter 31, contact the Clerk of the Board of Supervisors at City Hall, 1 Dr. Carlton B. Goodlett Place, Room 244, San Francisco, CA 94102, or call (415) 554-5184. If the Department’s Environmental Review Officer has deemed a project to be exempt from further environmental review, an exemption determination has been prepared and can be obtained on-line at <http://sf-planning.org/index.aspx?page=3447>. Under CEQA, in a later court challenge, a litigant may be limited to raising only those issues previously raised at a hearing on the project or in written correspondence delivered to the Board of Supervisors, Planning Commission, Planning Department or other City board, commission or department at, or prior to, such hearing, or as part of the appeal hearing process on the CEQA decision.

Individual calendar items: This proposed action is the Approval Action as defined by S.F. Administrative Code Chapter 31.

THE FOLLOWING MATERIALS ARE INCLUDED:

- 2 sets of plans (11x17)
- Project description
- Photos of proposed work areas/project site
- Necessary background reports (specified in EEA)
-



CITY and COUNTY of SAN FRANCISCO

SAN FRANCISCO MUNICIPAL TRANSPORTATION AGENCY

Order # 5646
FOR PUBLIC HEARING

The Sustainable Streets Division of the San Francisco Municipal Transportation Agency will hold a public hearing on Friday, September 16, at 10:00 AM, in Room 416 (Hearing Room 4), City Hall, 1 Dr. Carlton B. Goodlett Place, San Francisco, CA 94102, to consider the following proposals:

1. **ESTABLISH – SPEED HUMPS**
Magellan Avenue, between Montalvo Avenue and Dorantes Avenue (2 Speed Humps) *
2. **ESTABLISH – SPEED HUMPS**
John F. Kennedy Drive, from Transverse Drive to Great Hwy (9 speed humps and 1 raised crosswalk) *
3. **ESTABLISH – SPEED CUSHIONS**
46th Avenue, between Taraval Street and Santiago Street (2 speed cushions) *
4. **ESTABLISH – STOP SIGN**
26th Street, eastbound, at Connecticut Street, stopping the stem of this "T" intersection *
5. **ESTABLISH – SPEED CUSHION**
Hudson Avenue, between Newhall Street and Mendell Street (1 speed cushion) *
6. **ESTABLISH – TOW-AWAY NO STOPPING ANYTIME**
ESTABLISH – SIDEWALK WIDENING
6th Avenue, west side, from Geary Boulevard to 65 feet southerly (6-foot wide bus bulb)
7. **ESTABLISH – STOP SIGNS**
Clement Street, eastbound and westbound, at 5th Avenue, making this intersection an all-way STOP
8. **ESTABLISH – STOP SIGNS**
Ingerson Avenue, westbound and eastbound, at Hawes Street, making this intersection an all-way STOP
9. **RESCIND – 30 MILES PER HOUR SPEED LIMIT**
ESTABLISH – 25 MILES PER HOUR SPEED LIMIT
16th Street, between 3rd Street and 7th Street
10. **ESTABLISH – RED ZONE**
Judah Street, north side, from 27th Avenue to 34 feet easterly (removes 2 unmetered parking spaces)
Judah Street, south side, from 29th Avenue to 46 feet westerly (removes 3 unmetered parking spaces)



CITY and COUNTY of SAN FRANCISCO

SAN FRANCISCO MUNICIPAL TRANSPORTATION AGENCY

Order # 5646
FOR PUBLIC HEARING

11. ESTABLISH – NO PARKING ANYTIME

20th Street, north side, at Treat Avenue, between the east and west crosswalks (30-foot red zone)

12. ESTABLISH – TOW-AWAY NO STOPPING, PART-TIME PASSENGER LOADING ZONE, 7:30 AM TO 6:00 PM, ON SCHOOL DAYS

44th Avenue, west side, from 168 feet to 288 feet north of Noriega Street (120-foot zone) *

13. ESTABLISH – STOP SIGN

Arelious Walker Drive, southbound, at Innes Avenue, stopping the stem of this "T" intersection

14. ESTABLISH – STOP SIGN

Bay Street, eastbound, at Scott Street, stopping the stem of this "T" intersection

15. ESTABLISH – NO PARKING VEHICLES OVER 6 FEET HIGH

Carolina Street, east side, from Mariposa Street to 97 feet southerly

16. ESTABLISH – STOP SIGN

Mizpah Street, southbound, at Chenery Street, stopping the stem of this intersection
Surrey Street, southbound, at Chenery Street, stopping the stem of this intersection

17. ESTABLISH – RED ZONE

Ellis Street, north side, from 6 feet to 25 feet east of Franklin Street (removes meter #942) *

18. ESTABLISH – RED ZONE

Mission Street, west side, from 10 feet to 27 feet north of Ney Street *

19(a). ESTABLISH – STOP SIGN

3rd Avenue, southbound, at Parnassus Avenue, stopping the stem of this "T" intersection

19(b). ESTABLISH – RED ZONE

Parnassus Avenue, south side, from east 3rd Avenue curb line to 23 feet westerly
(between crosswalks, removes meter #597-R)

20(a). ESTABLISH – CROSSWALK

4th Street at Harrison Street (SE corner I-80 on-ramp crossing) *



CITY and COUNTY of SAN FRANCISCO

SAN FRANCISCO MUNICIPAL TRANSPORTATION AGENCY

Order # 5646
FOR PUBLIC HEARING

20(b). ESTABLISH – TOW AWAY, NO STOPPING ANYTIME

ESTABLISH – SIDEWALK WIDENING

- A. 4th Street, east side, from Harrison Street to 32 feet northerly (for 6-foot sidewalk widening)
- B. 4th Street, west side, from Harrison Street to 40 feet northerly (for 6-foot sidewalk widening)
- C. 4th Street, west side, from proposed crosswalk to 85 feet south of Harrison Street (for sidewalk widening up to 8 feet)
- D. Harrison Street, north side, from 4th Street to 43 feet easterly (for 7-foot sidewalk widening)
- E. Harrison Street, south side, from new crosswalk to 47 feet west of 4th Street (for 6-foot sidewalk widening)
- F. Bryant Street, north side, from 4th Street to 33 feet westerly (for 7-foot sidewalk widening)
- G. Bryant Street, south side, from 4th Street to 79 feet westerly (for 7-foot sidewalk widening)

20(c). RESCIND – METERED PARKING

RESCIND – SCHOOL BUS STOP 7 AM TO 3 PM SCHOOL DAYS

RESCIND – PASSENGER LOADING ZONE 3 PM TO 6 PM SCHOOL DAYS

Harrison Street, north side, from 113 feet to 136 feet west of 4th Street (space #812) *

20(d). ESTABLISH – BUS ZONE

Harrison Street, north side, from 4th Street to 146 feet westerly (extends existing 113-foot bus zone to 146 feet)

Categorically exempt from Environmental Review:
CEQA Guidelines Section 15301 Class 1(c): Operation,
repair, maintenance, or minor alteration of existing
highways and streets, sidewalks, gutters, bicycle
and pedestrian trails, and similar facilities.

9/2/2016

Andrea Contreras, SFMTA Date



CITY and COUNTY of SAN FRANCISCO

SAN FRANCISCO MUNICIPAL TRANSPORTATION AGENCY

Order # 5646
FOR PUBLIC HEARING

The following item has been environmentally cleared by the Planning Department on October 22, 2015, Case Number 2015-007975ENV.

21. ESTABLISH – TOW AWAY NO PARKING PERMITTED COMMUTER SHUTTLE BUS ZONE, 6 AM TO 10 AM, MONDAY THROUGH FRIDAY

Gough Street, west side, from Geary Boulevard to 135 feet southerly (restricts 6 RPP parking spaces)

**** Items denoted with an asterisk (*) can be given approval by the City Traffic Engineer after the public hearing. Otherwise, the SFMTA Board will make the final approval at a later date based on the outcome at the public hearing.***

California Environmental Quality Act (CEQA) Appeal Rights under Chapter 31 of the San Francisco Administrative Code: For Approval Actions, the Planning Department has issued a CEQA exemption determination or negative declaration, which may be viewed online at <http://www.sf-planning.org/index.aspx?page=3447>. Following approval of the item by the SFMTA City Traffic Engineer, the CEQA determination is subject to appeal within the time frame specified in S.F. Administrative Code Section 31.16, typically within 30 calendar days of the Approval Action. For information on filing a CEQA appeal, contact the Clerk of the Board of Supervisors at City Hall, 1 Dr. Carlton B. Goodlett Place, Room 244, San Francisco, CA 94102, or call (415) 554-5184. Under CEQA, in a later court challenge, a litigant may be limited to raising only those issues previously raised at a hearing on the project or in written correspondence delivered to the Board of Supervisors or other City board, commission or department at, or prior to, such hearing, or as part of the appeal hearing process on the CEQA decision.

Approved for Public Hearing by:

A handwritten signature in black ink that reads "Ricardo Olea".

Ricardo Olea
City Traffic Engineer
Sustainable Streets Division

cc: Debbie Borthne, SFMTA Parking and Enforcement
James Lee, SFMTA Parking and Enforcement
Matt Lee, SFMTA Service Planning

RO:TF:jm
ISSUE DATE: 9/2/16



PROJECT QA/QC REVIEWS FORM

(This Form must be completed by the PM or PL after each milestone for review by the QA/QC Program Manager.)



Check Milestone for this Submittal:	Mandatory Milestones for Building and Complex Projects	For All Projects
	* <input type="checkbox"/> PD/PP <input type="checkbox"/> 10% PS&E <input type="checkbox"/> 50% PS&E <input type="checkbox"/> 75% PS&E <input type="checkbox"/> 100% SD <input type="checkbox"/> 100% DD <input type="checkbox"/> 50% CD	<input type="checkbox"/> 95% PS&E <input type="checkbox"/> 100% Final <input type="checkbox"/> 95% CD

Job Order No.: _____ Date Submitted: _____
 Project Title: 4th St Bulbouts
 Project Manager: Ellen Wong Phone Number: 415-557-4690
 Submitted By: Elia Haddad Phone Number: 415-554-8259

1. QA/QC Reviews Completed

Team	Team Review Completed?	Reviewer	Date Review Completed	No. of Drawings	If applicable, Design Checklists Done?
Streets & Highways	<input checked="" type="checkbox"/> Yes <input type="checkbox"/> NA	<i>Richard Chircop</i>	12/14/2023	18	<input checked="" type="checkbox"/> Yes <input type="checkbox"/> No
Hydraulics	<input type="checkbox"/> Yes <input type="checkbox"/> NA				<input type="checkbox"/> Yes <input type="checkbox"/> No
Landscape	<input type="checkbox"/> Yes <input type="checkbox"/> NA				<input type="checkbox"/> Yes <input type="checkbox"/> No
Electrical	<input type="checkbox"/> Yes <input type="checkbox"/> NA				<input type="checkbox"/> Yes <input type="checkbox"/> No
Mechanical	<input type="checkbox"/> Yes <input type="checkbox"/> NA				<input type="checkbox"/> Yes <input type="checkbox"/> No
Structural	<input type="checkbox"/> Yes <input type="checkbox"/> NA				<input type="checkbox"/> Yes <input type="checkbox"/> No
Architecture	<input type="checkbox"/> Yes <input type="checkbox"/> NA				<input type="checkbox"/> Yes <input type="checkbox"/> No
Other Reviews					Standard Construction Measures
Project Peer Review	<input type="checkbox"/> Yes <input type="checkbox"/> NA				I certify that the Public Works Standard Construction Measures have fully been incorporated into project specifications. <i>Robert Begley</i> SAR Manager 12/19/23 Date
Value Engineering	<input type="checkbox"/> Yes <input type="checkbox"/> NA				
Disability Access Coordinator	<input checked="" type="checkbox"/> Yes <input type="checkbox"/> NA	Ken Spielman	3/16/2021		
CM Constructability	<input type="checkbox"/> Yes <input type="checkbox"/> NA				
Contract Prep	<input type="checkbox"/> Yes <input type="checkbox"/> NA				
CAD/BIM Manager	<input type="checkbox"/> Yes <input type="checkbox"/> NA				
Regulatory Affairs	<input type="checkbox"/> Yes <input type="checkbox"/> NA				
Public Affairs	<input type="checkbox"/> Yes <input type="checkbox"/> NA				
Deputy Division Manager	<input type="checkbox"/> Yes <input type="checkbox"/> NA				

Is a tabulation of the review comments and responses saved in the Project file folder? Yes No NA

2. Final Reviews

Final Reviews	Completed?	By	Date Completed
General Design Checklist	Completed? <input type="checkbox"/> Yes <input type="checkbox"/> No <input type="checkbox"/> NA		
Final Interference Check	Completed? <input type="checkbox"/> Yes <input type="checkbox"/> No <input type="checkbox"/> NA		

Note: Final Interference Check is required when substantial revisions to the Drawings are made due to 95% review comments.

Reviewed by: *[Signature]* 3/16/2021 Date
 Disability Access Coordinator
 Reviewed by: **Oliver Iberien** Digitally signed by Oliver Iberien Date: 2023.12.22 16:30:51 -08'00'
 Regulatory Affairs Manager
 Reviewed by: *Alex M. Murillo* 01/04/2024 Date
 Public Affairs Manager
 Reviewed by: *[Signature]* 01/11/2024 Date
 Deputy Division Manager (BOE) or Bureau Manager (BOA)

* PD = Project Definition; PP = Planning and Programming; SD = Schematic Design; DD = Design Development; CD = Construction Documents. Refer to Procedure 10.05.03.



SAN FRANCISCO PLANNING DEPARTMENT

ENVIRONMENTAL EVALUATION APPLICATION COVER MEMO - PUBLIC PROJECTS ONLY

In accordance with Chapter 31 of the San Francisco Administrative Code, an appeal of an exemption determination can only be filed within 30 days of the project receiving the first approval action.

Please attach this memo along with all necessary materials to the Environmental Evaluation Application.

Project Address and/or Title:	
Project Approval Action:	
Will the approval action be taken at a noticed public hearing? <input type="checkbox"/> YES* <input type="checkbox"/> NO * If YES is checked, please see below.	

IF APPROVAL ACTION IS TAKEN AT A NOTICED PUBLIC HEARING, INCLUDE THE FOLLOWING CALENDAR LANGUAGE:

End of Calendar: CEQA Appeal Rights under Chapter 31 of the San Francisco Administrative Code If the Commission approves an action identified by an exemption or negative declaration as the Approval Action (as defined in S.F. Administrative Code Chapter 31, as amended, Board of Supervisors Ordinance Number 161-13), then the CEQA decision prepared in support of that Approval Action is thereafter subject to appeal within the time frame specified in S.F. Administrative Code Section 31.16. Typically, an appeal must be filed within 30 calendar days of the Approval Action. For information on filing an appeal under Chapter 31, contact the Clerk of the Board of Supervisors at City Hall, 1 Dr. Carlton B. Goodlett Place, Room 244, San Francisco, CA 94102, or call (415) 554-5184. If the Department’s Environmental Review Officer has deemed a project to be exempt from further environmental review, an exemption determination has been prepared and can be obtained on-line at <http://sf-planning.org/index.aspx?page=3447>. Under CEQA, in a later court challenge, a litigant may be limited to raising only those issues previously raised at a hearing on the project or in written correspondence delivered to the Board of Supervisors, Planning Commission, Planning Department or other City board, commission or department at, or prior to, such hearing, or as part of the appeal hearing process on the CEQA decision.

Individual calendar items: This proposed action is the Approval Action as defined by S.F. Administrative Code Chapter 31.

THE FOLLOWING MATERIALS ARE INCLUDED:

- 2 sets of plans (11x17)
- Project description
- Photos of proposed work areas/project site
- Necessary background reports (specified in EEA)



CITY and COUNTY of SAN FRANCISCO

SAN FRANCISCO MUNICIPAL TRANSPORTATION AGENCY

Order # 5646
FOR PUBLIC HEARING

The Sustainable Streets Division of the San Francisco Municipal Transportation Agency will hold a public hearing on Friday, September 16, at 10:00 AM, in Room 416 (Hearing Room 4), City Hall, 1 Dr. Carlton B. Goodlett Place, San Francisco, CA 94102, to consider the following proposals:

1. **ESTABLISH – SPEED HUMPS**
Magellan Avenue, between Montalvo Avenue and Dorantes Avenue (2 Speed Humps) *
2. **ESTABLISH – SPEED HUMPS**
John F. Kennedy Drive, from Transverse Drive to Great Hwy (9 speed humps and 1 raised crosswalk) *
3. **ESTABLISH – SPEED CUSHIONS**
46th Avenue, between Taraval Street and Santiago Street (2 speed cushions) *
4. **ESTABLISH – STOP SIGN**
26th Street, eastbound, at Connecticut Street, stopping the stem of this "T" intersection *
5. **ESTABLISH – SPEED CUSHION**
Hudson Avenue, between Newhall Street and Mendell Street (1 speed cushion) *
6. **ESTABLISH – TOW-AWAY NO STOPPING ANYTIME**
ESTABLISH – SIDEWALK WIDENING
6th Avenue, west side, from Geary Boulevard to 65 feet southerly (6-foot wide bus bulb)
7. **ESTABLISH – STOP SIGNS**
Clement Street, eastbound and westbound, at 5th Avenue, making this intersection an all-way STOP
8. **ESTABLISH – STOP SIGNS**
Ingerson Avenue, westbound and eastbound, at Hawes Street, making this intersection an all-way STOP
9. **RESCIND – 30 MILES PER HOUR SPEED LIMIT**
ESTABLISH – 25 MILES PER HOUR SPEED LIMIT
16th Street, between 3rd Street and 7th Street
10. **ESTABLISH – RED ZONE**
Judah Street, north side, from 27th Avenue to 34 feet easterly (removes 2 unmetered parking spaces)
Judah Street, south side, from 29th Avenue to 46 feet westerly (removes 3 unmetered parking spaces)



CITY and COUNTY of SAN FRANCISCO

SAN FRANCISCO MUNICIPAL TRANSPORTATION AGENCY

Order # 5646
FOR PUBLIC HEARING

11. ESTABLISH – NO PARKING ANYTIME

20th Street, north side, at Treat Avenue, between the east and west crosswalks (30-foot red zone)

12. ESTABLISH – TOW-AWAY NO STOPPING, PART-TIME PASSENGER LOADING ZONE, 7:30 AM TO 6:00 PM, ON SCHOOL DAYS

44th Avenue, west side, from 168 feet to 288 feet north of Noriega Street (120-foot zone) *

13. ESTABLISH – STOP SIGN

Arelious Walker Drive, southbound, at Innes Avenue, stopping the stem of this "T" intersection

14. ESTABLISH – STOP SIGN

Bay Street, eastbound, at Scott Street, stopping the stem of this "T" intersection

15. ESTABLISH – NO PARKING VEHICLES OVER 6 FEET HIGH

Carolina Street, east side, from Mariposa Street to 97 feet southerly

16. ESTABLISH – STOP SIGN

Mizpah Street, southbound, at Chenery Street, stopping the stem of this intersection
Surrey Street, southbound, at Chenery Street, stopping the stem of this intersection

17. ESTABLISH – RED ZONE

Ellis Street, north side, from 6 feet to 25 feet east of Franklin Street (removes meter #942) *

18. ESTABLISH – RED ZONE

Mission Street, west side, from 10 feet to 27 feet north of Ney Street *

19(a). ESTABLISH – STOP SIGN

3rd Avenue, southbound, at Parnassus Avenue, stopping the stem of this "T" intersection

19(b). ESTABLISH – RED ZONE

Parnassus Avenue, south side, from east 3rd Avenue curb line to 23 feet westerly
(between crosswalks, removes meter #597-R)

20(a). ESTABLISH – CROSSWALK

4th Street at Harrison Street (SE corner I-80 on-ramp crossing) *



CITY and COUNTY of SAN FRANCISCO

SAN FRANCISCO MUNICIPAL TRANSPORTATION AGENCY

Order # 5646
FOR PUBLIC HEARING

20(b). ESTABLISH – TOW AWAY, NO STOPPING ANYTIME

ESTABLISH – SIDEWALK WIDENING

- A. 4th Street, east side, from Harrison Street to 32 feet northerly (for 6-foot sidewalk widening)
- B. 4th Street, west side, from Harrison Street to 40 feet northerly (for 6-foot sidewalk widening)
- C. 4th Street, west side, from proposed crosswalk to 85 feet south of Harrison Street (for sidewalk widening up to 8 feet)
- D. Harrison Street, north side, from 4th Street to 43 feet easterly (for 7-foot sidewalk widening)
- E. Harrison Street, south side, from new crosswalk to 47 feet west of 4th Street (for 6-foot sidewalk widening)
- F. Bryant Street, north side, from 4th Street to 33 feet westerly (for 7-foot sidewalk widening)
- G. Bryant Street, south side, from 4th Street to 79 feet westerly (for 7-foot sidewalk widening)

20(c). RESCIND – METERED PARKING

RESCIND – SCHOOL BUS STOP 7 AM TO 3 PM SCHOOL DAYS

RESCIND – PASSENGER LOADING ZONE 3 PM TO 6 PM SCHOOL DAYS

Harrison Street, north side, from 113 feet to 136 feet west of 4th Street (space #812) *

20(d). ESTABLISH – BUS ZONE

Harrison Street, north side, from 4th Street to 146 feet westerly (extends existing 113-foot bus zone to 146 feet)

Categorically exempt from Environmental Review:
CEQA Guidelines Section 15301 Class 1(c): Operation,
repair, maintenance, or minor alteration of existing
highways and streets, sidewalks, gutters, bicycle
and pedestrian trails, and similar facilities.

9/2/2016

Andrea Contreras, SFMTA Date



CITY and COUNTY of SAN FRANCISCO

SAN FRANCISCO MUNICIPAL TRANSPORTATION AGENCY

Order # 5646
FOR PUBLIC HEARING

The following item has been environmentally cleared by the Planning Department on October 22, 2015, Case Number 2015-007975ENV.

21. ESTABLISH – TOW AWAY NO PARKING PERMITTED COMMUTER SHUTTLE BUS ZONE, 6 AM TO 10 AM, MONDAY THROUGH FRIDAY

Gough Street, west side, from Geary Boulevard to 135 feet southerly (restricts 6 RPP parking spaces)

**** Items denoted with an asterisk (*) can be given approval by the City Traffic Engineer after the public hearing. Otherwise, the SFMTA Board will make the final approval at a later date based on the outcome at the public hearing.***

California Environmental Quality Act (CEQA) Appeal Rights under Chapter 31 of the San Francisco Administrative Code: For Approval Actions, the Planning Department has issued a CEQA exemption determination or negative declaration, which may be viewed online at <http://www.sf-planning.org/index.aspx?page=3447>. Following approval of the item by the SFMTA City Traffic Engineer, the CEQA determination is subject to appeal within the time frame specified in S.F. Administrative Code Section 31.16, typically within 30 calendar days of the Approval Action. For information on filing a CEQA appeal, contact the Clerk of the Board of Supervisors at City Hall, 1 Dr. Carlton B. Goodlett Place, Room 244, San Francisco, CA 94102, or call (415) 554-5184. Under CEQA, in a later court challenge, a litigant may be limited to raising only those issues previously raised at a hearing on the project or in written correspondence delivered to the Board of Supervisors or other City board, commission or department at, or prior to, such hearing, or as part of the appeal hearing process on the CEQA decision.

Approved for Public Hearing by:

A handwritten signature in black ink that reads "Ricardo Olea".

Ricardo Olea
City Traffic Engineer
Sustainable Streets Division

cc: Debbie Borthne, SFMTA Parking and Enforcement
James Lee, SFMTA Parking and Enforcement
Matt Lee, SFMTA Service Planning

RO:TF:jm
ISSUE DATE: 9/2/16

SAN FRANCISCO
MUNICIPAL TRANSPORTATION AGENCY
BOARD OF DIRECTORS

RESOLUTION No. 16-140

WHEREAS, The San Francisco Municipal Transportation Agency has received a request, or identified a need for traffic modifications as follows:

- A. ESTABLISH – NO PARKING VEHICLES OVER 22 FEET LONG OR SEVEN FEET HIGH, MIDNIGHT TO 6 AM, DAILY – Marina Boulevard, both sides, between Laguna Street and Buchanan Street; Buchanan Street, both sides, between Marina Boulevard and North Point Street; and North Point Street, both sides, between Laguna Street and Buchanan Street.
- B. ESTABLISH – SIDEWALK WIDENING – Lake Merced Boulevard, east side, from 322 to 402 feet south of Font Boulevard (sidewalk widened by 5.2 feet); and Lake Merced Boulevard, east side, from 707 to 767 feet south of Font Boulevard (sidewalk widened 6 feet).
- C. RESCIND – GENERAL METER PARKING – Mission Street, north side, from 17 feet to 104 feet west of Fremont Street (4 meters, #404 to 410).
- D. ESTABLISH – TOW-AWAY NO STOPPING ANYTIME – Mission Street, north side, from 1st Street to Fremont Street.
- E. ESTABLISH – STOP SIGN – 26th Street, eastbound, at Connecticut Street, stopping the stem of this "T" intersection.
- F. ESTABLISH – TOW-AWAY NO STOPPING ANYTIME – ESTABLISH – SIDEWALK WIDENING – 6th Avenue, west side, from Geary Boulevard to 65 feet southerly (6-foot wide bus bulb).
- G. ESTABLISH – STOP SIGNS – Clement Street, eastbound and westbound, at 5th Avenue, making this intersection an all-way STOP.
- H. ESTABLISH – STOP SIGNS – Ingerson Avenue, westbound and eastbound, at Hawes Street, making this intersection an all-way STOP.
- I. RESCIND – 30 MILES PER HOUR SPEED LIMIT – ESTABLISH – 25 MILES PER HOUR SPEED LIMIT – 16th Street, between 3rd Street and 7th Street.
- J. ESTABLISH – RED ZONE – Judah Street, north side, from 27th Avenue to 34 feet easterly (removes 2 unmetered parking spaces); and Judah Street, south side, from 29th Avenue to 46 feet westerly (removes 3 unmetered parking spaces).
- K. ESTABLISH – NO PARKING ANYTIME – 20th Street, north side, at Treat Avenue, between the east and west crosswalks (30-foot red zone).
- L. ESTABLISH – STOP SIGN – Arelious Walker Drive, southbound, at Innes Avenue, stopping the stem of this "T" intersection.
- M. ESTABLISH – STOP SIGN – Bay Street, eastbound, at Scott Street, stopping the stem of this "T" intersection.
- N. ESTABLISH – NO PARKING VEHICLES OVER 6 FEET HIGH – Carolina Street, east side, from Mariposa Street to 97 feet southerly.
- O. ESTABLISH – STOP SIGN – Mizpah Street, southbound, at Chenery Street, stopping the stem of this intersection; and Surrey Street, southbound, at Chenery Street, stopping the stem of this intersection.
- P. ESTABLISH – STOP SIGN – 3rd Avenue, southbound, at Parnassus Avenue, stopping the stem of this "T" intersection.
- Q. ESTABLISH – RED ZONE – Parnassus Avenue, south side, from east 3rd Avenue curb line to 23 feet westerly (between crosswalks, removes meter #597-R).
- R. ESTABLISH – TOW AWAY, NO STOPPING ANYTIME – ESTABLISH – SIDEWALK WIDENING – 4th Street, east side, from Harrison Street to 32 feet northerly (for 6-foot sidewalk widening); 4th Street, west side, from Harrison Street to 40 feet northerly (for 6-

foot sidewalk widening); 4th Street, west side, from proposed crosswalk to 85 feet south of Harrison Street (for sidewalk widening up to 8 feet); Harrison Street, north side, from 4th Street to 43 feet easterly (for 7-foot sidewalk widening); Harrison Street, south side, from new crosswalk to 47 feet west of 4th Street (for 6-foot sidewalk widening); Bryant Street, north side, from 4th Street to 33 feet westerly (for 7-foot sidewalk widening); and Bryant Street, south side, from 4th Street to 79 feet westerly (for 7-foot sidewalk widening).

- S. ESTABLISH – BUS ZONE – Harrison Street, north side, from 4th Street to 146 feet westerly (extends existing 113-foot bus zone to 146 feet).

WHEREAS, The proposed parking and traffic modifications are subject to the California Environmental Quality Act (CEQA); Title 14 of the California Code of Regulations Section 15301 provides an exemption from environmental review for operation, repair, maintenance, or minor alteration of existing highways and streets, sidewalks, gutters, bicycle and pedestrian trails, and similar facilities; and,

WHEREAS, The SFMTA, under authority delegated by the Planning Department, determined that the proposed parking and traffic modifications in Item A and Items E-S are categorically exempt from CEQA pursuant to Title 14 of the California Code of Regulations Section 15301; and,

WHEREAS, The proposed action is the Approval Action for Item A and Items E-S as defined by the S.F. Administrative Code Chapter 31; and,

WHEREAS, The San Francisco State University Recreation Wellness Center Initial Study/Mitigated Negative Declaration (RWC MND)—prepared in March 2014 under State Clearinghouse Number 2012102005—evaluated the environmental impacts of the proposed parking and traffic modifications in Item B; On May 21, 2014, the California State University Board of Trustees passed Resolution *RCPBG 05-14-07* approving the Recreation Wellness Center project, and adopting the CEQA Findings and the Mitigation Monitoring and Reporting Plan; and,

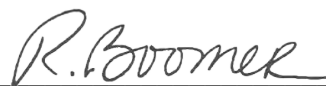
WHEREAS, The Transit Center District Plan and Transit Tower Final Environmental Impact Report (TCDP FEIR) evaluated the environmental impacts of the proposed parking and traffic modifications in Items C-D; On May 24, 2012, the San Francisco Planning Commission passed Motion 18629 certifying the FEIR (Case Nos. 2007.0558E and 2008.0789E), and adopting the CEQA Findings, Statement of Overriding Considerations, and the Mitigation Monitoring and Reporting Plan; and,

WHEREAS, Copies of the CEQA determinations are on file with the Secretary to the SFMTA Board of Directors, and are incorporated herein by reference; and,

WHEREAS, The public has been notified about the proposed modifications and has been given the opportunity to comment on those modifications through the public hearing process; now, therefore, be it

RESOLVED, That the San Francisco Municipal Transportation Agency Board of Directors, upon recommendation of the Director of Transportation and the Director of the Sustainable Streets Division approves the changes.

I certify that the foregoing resolution was adopted by the San Francisco Municipal Transportation Agency Board of Directors at its meeting of October 18, 2016.



Secretary to the Board of Directors
San Francisco Municipal Transportation Agency



CITY and COUNTY of SAN FRANCISCO

SAN FRANCISCO MUNICIPAL TRANSPORTATION AGENCY

Order # 5646
FOR PUBLIC HEARING

The Sustainable Streets Division of the San Francisco Municipal Transportation Agency will hold a public hearing on Friday, September 16, at 10:00 AM, in Room 416 (Hearing Room 4), City Hall, 1 Dr. Carlton B. Goodlett Place, San Francisco, CA 94102, to consider the following proposals:

1. **ESTABLISH – SPEED HUMPS**
Magellan Avenue, between Montalvo Avenue and Dorantes Avenue (2 Speed Humps) *
2. **ESTABLISH – SPEED HUMPS**
John F. Kennedy Drive, from Transverse Drive to Great Hwy (9 speed humps and 1 raised crosswalk) *
3. **ESTABLISH – SPEED CUSHIONS**
46th Avenue, between Taraval Street and Santiago Street (2 speed cushions) *
4. **ESTABLISH – STOP SIGN**
26th Street, eastbound, at Connecticut Street, stopping the stem of this "T" intersection *
5. **ESTABLISH – SPEED CUSHION**
Hudson Avenue, between Newhall Street and Mendell Street (1 speed cushion) *
6. **ESTABLISH – TOW-AWAY NO STOPPING ANYTIME**
ESTABLISH – SIDEWALK WIDENING
6th Avenue, west side, from Geary Boulevard to 65 feet southerly (6-foot wide bus bulb)
7. **ESTABLISH – STOP SIGNS**
Clement Street, eastbound and westbound, at 5th Avenue, making this intersection an all-way STOP
8. **ESTABLISH – STOP SIGNS**
Ingerson Avenue, westbound and eastbound, at Hawes Street, making this intersection an all-way STOP
9. **RESCIND – 30 MILES PER HOUR SPEED LIMIT**
ESTABLISH – 25 MILES PER HOUR SPEED LIMIT
16th Street, between 3rd Street and 7th Street
10. **ESTABLISH – RED ZONE**
Judah Street, north side, from 27th Avenue to 34 feet easterly (removes 2 unmetered parking spaces)
Judah Street, south side, from 29th Avenue to 46 feet westerly (removes 3 unmetered parking spaces)



CITY and COUNTY of SAN FRANCISCO

SAN FRANCISCO MUNICIPAL TRANSPORTATION AGENCY

Order # 5646
FOR PUBLIC HEARING

11. ESTABLISH – NO PARKING ANYTIME

20th Street, north side, at Treat Avenue, between the east and west crosswalks (30-foot red zone)

12. ESTABLISH – TOW-AWAY NO STOPPING, PART-TIME PASSENGER LOADING ZONE, 7:30 AM TO 6:00 PM, ON SCHOOL DAYS

44th Avenue, west side, from 168 feet to 288 feet north of Noriega Street (120-foot zone) *

13. ESTABLISH – STOP SIGN

Arelious Walker Drive, southbound, at Innes Avenue, stopping the stem of this "T" intersection

14. ESTABLISH – STOP SIGN

Bay Street, eastbound, at Scott Street, stopping the stem of this "T" intersection

15. ESTABLISH – NO PARKING VEHICLES OVER 6 FEET HIGH

Carolina Street, east side, from Mariposa Street to 97 feet southerly

16. ESTABLISH – STOP SIGN

Mizpah Street, southbound, at Chenery Street, stopping the stem of this intersection
Surrey Street, southbound, at Chenery Street, stopping the stem of this intersection

17. ESTABLISH – RED ZONE

Ellis Street, north side, from 6 feet to 25 feet east of Franklin Street (removes meter #942) *

18. ESTABLISH – RED ZONE

Mission Street, west side, from 10 feet to 27 feet north of Ney Street *

19(a). ESTABLISH – STOP SIGN

3rd Avenue, southbound, at Parnassus Avenue, stopping the stem of this "T" intersection

19(b). ESTABLISH – RED ZONE

Parnassus Avenue, south side, from east 3rd Avenue curb line to 23 feet westerly
(between crosswalks, removes meter #597-R)

20(a). ESTABLISH – CROSSWALK

4th Street at Harrison Street (SE corner I-80 on-ramp crossing) *



CITY and COUNTY of SAN FRANCISCO

SAN FRANCISCO MUNICIPAL TRANSPORTATION AGENCY

Order # 5646
FOR PUBLIC HEARING

20(b). ESTABLISH – TOW AWAY, NO STOPPING ANYTIME

ESTABLISH – SIDEWALK WIDENING

- A. 4th Street, east side, from Harrison Street to 32 feet northerly (for 6-foot sidewalk widening)
- B. 4th Street, west side, from Harrison Street to 40 feet northerly (for 6-foot sidewalk widening)
- C. 4th Street, west side, from proposed crosswalk to 85 feet south of Harrison Street (for sidewalk widening up to 8 feet)
- D. Harrison Street, north side, from 4th Street to 43 feet easterly (for 7-foot sidewalk widening)
- E. Harrison Street, south side, from new crosswalk to 47 feet west of 4th Street (for 6-foot sidewalk widening)
- F. Bryant Street, north side, from 4th Street to 33 feet westerly (for 7-foot sidewalk widening)
- G. Bryant Street, south side, from 4th Street to 79 feet westerly (for 7-foot sidewalk widening)

20(c). RESCIND – METERED PARKING

RESCIND – SCHOOL BUS STOP 7 AM TO 3 PM SCHOOL DAYS

RESCIND – PASSENGER LOADING ZONE 3 PM TO 6 PM SCHOOL DAYS

Harrison Street, north side, from 113 feet to 136 feet west of 4th Street (space #812) *

20(d). ESTABLISH – BUS ZONE

Harrison Street, north side, from 4th Street to 146 feet westerly (extends existing 113-foot bus zone to 146 feet)

Categorically exempt from Environmental Review:
CEQA Guidelines Section 15301 Class 1(c): Operation,
repair, maintenance, or minor alteration of existing
highways and streets, sidewalks, gutters, bicycle
and pedestrian trails, and similar facilities.

9/2/2016

Andrea Contreras, SFMTA Date



CITY and COUNTY of SAN FRANCISCO

SAN FRANCISCO MUNICIPAL TRANSPORTATION AGENCY

Order # 5646
FOR PUBLIC HEARING

The following item has been environmentally cleared by the Planning Department on October 22, 2015, Case Number 2015-007975ENV.

21. ESTABLISH – TOW AWAY NO PARKING PERMITTED COMMUTER SHUTTLE BUS ZONE, 6 AM TO 10 AM, MONDAY THROUGH FRIDAY

Gough Street, west side, from Geary Boulevard to 135 feet southerly (restricts 6 RPP parking spaces)

**** Items denoted with an asterisk (*) can be given approval by the City Traffic Engineer after the public hearing. Otherwise, the SFMTA Board will make the final approval at a later date based on the outcome at the public hearing.***

California Environmental Quality Act (CEQA) Appeal Rights under Chapter 31 of the San Francisco Administrative Code: For Approval Actions, the Planning Department has issued a CEQA exemption determination or negative declaration, which may be viewed online at <http://www.sf-planning.org/index.aspx?page=3447>. Following approval of the item by the SFMTA City Traffic Engineer, the CEQA determination is subject to appeal within the time frame specified in S.F. Administrative Code Section 31.16, typically within 30 calendar days of the Approval Action. For information on filing a CEQA appeal, contact the Clerk of the Board of Supervisors at City Hall, 1 Dr. Carlton B. Goodlett Place, Room 244, San Francisco, CA 94102, or call (415) 554-5184. Under CEQA, in a later court challenge, a litigant may be limited to raising only those issues previously raised at a hearing on the project or in written correspondence delivered to the Board of Supervisors or other City board, commission or department at, or prior to, such hearing, or as part of the appeal hearing process on the CEQA decision.

Approved for Public Hearing by:

A handwritten signature in black ink that reads "Ricardo Olea".

Ricardo Olea
City Traffic Engineer
Sustainable Streets Division

cc: Debbie Borthne, SFMTA Parking and Enforcement
James Lee, SFMTA Parking and Enforcement
Matt Lee, SFMTA Service Planning

RO:TF:jm
ISSUE DATE: 9/2/16



TASC MINUTES

TRANSPORTATION ADVISORY STAFF COMMITTEE

Thursday, April 14, 2016 at 10:15 AM
One South Van Ness Avenue, 7th Floor, Room #7080

SFMTA Sustainable Streets:		Harvey Quan
SFMTA Transit Operations:	Absent	
SFMTA Parking Enforcement:		Curtis Smith, Abe Dabis
SFMTA Taxi Services:	Absent	
Public Works:	Absent	
Police Department:		Raymond Kane
Planning Department:		Paul Chasen
Fire Department:		Ketty Fedigan
Guests:		John Nestor Becca Homa Shahram Shariati Kimberly Leung Daniel Mackowski Casey Hildreth Laura Stonehill Mike Sallaberry Ken Kwong Thalia Leng

MINUTES OF THE MARCH 24, 2016 MEETING

The Committee adopted the Minutes

ON HOLD

1. Ashbury Street, between Hayes Street and Grove Street – Angle Parking
ESTABLISH – 45 DEGREE ANGLE PARKING
Ashbury Street, east side, from 20 feet north of Hayes Street to 12 feet south of Grove Street
Jonathan Chimento, 749-2449
2. Central Avenue, between Golden Gate Avenue and McAllister Street – Perpendicular Parking
ESTABLISH – PERPENDICULAR PARKING
Central Avenue, east side, between Golden Gate Avenue and McAllister Street
Jonathan Chimento, 749-2449
3. Grove Street, between Masonic Avenue and Ashbury Street – Angle Parking
ESTABLISH – 45 DEGREE ANGLE PARKING
Grove Street, south side, from 10 feet to 230 feet west of Masonic Avenue
Jonathan Chimento, 749-2449
4. Lyon Street, between Golden Gate Avenue and McAllister Street – Perpendicular Parking
ESTABLISH – PERPENDICULAR PARKING
Lyon Street, east side, between Golden Gate Avenue and McAllister Street
Jonathan Chimento, 749-2449
5. McAllister Street, between Masonic Avenue and Central Avenue – Angle Parking
ESTABLISH – 45 DEGREE ANGLE PARKING
McAllister Street, south side, from 135 feet west of Masonic Avenue to 42 east of Central Avenue
Jonathan Chimento, 749-2449

PUBLIC HEARING SCHEDULING – CONSENT CALENDAR

The following Items for Public Hearing were considered routine by SFMTA Staff:

1. 15th Avenue, between Balboa Street and Cabrillo Street – Speed Humps
ESTABLISH – SPEED HUMPS
15th Avenue, between Balboa Street and Cabrillo Street (2 speed humps)
Daniel Carr, 749-2498
2. 22nd Avenue, between Clement Street and Geary Boulevard – Speed Humps
ESTABLISH – SPEED HUMPS
22nd Avenue, between Clement Street and Geary Boulevard (2 speed humps)
Daniel Carr, 749-2498

3. 26th Street, between Hampshire Street and York Street – Speed Hump
 ESTABLISH – SPEED HUMP
 26th Street, between Hampshire Street and York Street (1 speed hump)
 Daniel Carr, 749-2498

4. Hampshire Street, between Cesar Chavez Street and 26th Street – Speed Cushion
 ESTABLISH – SPEED CUSHION
 Hampshire Street, between Cesar Chavez Street and 26th Street (1 speed cushion)
 Daniel Carr, 749-2498

5. Hampshire Street, between 25th Street and 26th Street – Speed Cushions
 ESTABLISH – SPEED CUSHION
 Hampshire Street, between 25th Street and 26th Street (2 speed cushions)
 Daniel Carr, 749-2498

6. Ingerson Avenue, between Ingalls Street and Hawes Street – Speed Humps
 ESTABLISH – SPEED HUMP
 Ingerson Avenue, between Redondo and Hawes streets (1 speed hump)
 Ingerson Avenue, between Redondo and Ingalls streets (1 speed hump)
 Daniel Carr, 749-2498

7. York Street, between 26th Street and Cesar Chavez Street – Speed Hump
 ESTABLISH – SPEED HUMP
 York Street, between 26th Street and Cesar Chavez Street (1 speed hump)
 Daniel Carr, 749-2498

8. Hillcrest Road/Treasure Island Road, between Macalla Road and S Gate Road – Speed Cushions
 ESTABLISH – SPEED CUSHIONS
 Hillcrest Road/Treasure Island Road, between Macalla Road and S Gate Road (6 speed cushions)
 Mike Sallaberry, 701-4563

9. Clayton Street, between 17th Street and Carmel Street – Tall Vehicle Restriction
 ESTABLISH – NO PARKING VEHICLES GREATER THAN 6 FEET HIGH
 Clayton Street, west side, between 17th Street and Carmel Street
 Tom Folks, 701-4688

10. O'Farrell Street at Lyon Street – Red Zone
 ESTABLISH – RED ZONE
 O'Farrell Street, south side, from east Lyon Street curb line to 33 feet westerly (between crosswalks)
 Saranya Konala, 646-2125

No objections to all items.

FOR PUBLIC HEARING SCHEDULING – REGULAR CALENDAR

1. Leavenworth Street and North Point Street – No Left Turn, Right Turn Only

ESTABLISH – RIGHT TURN ONLY

Leavenworth Street, southbound, at North Point Street

ESTABLISH – NO LEFT TURN

North Point Street, westbound, at Leavenworth Street

James Shahamiri 701-4732

No objections.

2. Lincoln Way, between 16th Avenue and 18th Avenue – Turn Restrictions

ESTABLISH – NO U-TURN

Lincoln Way, eastbound, at 16th Avenue

Lincoln Way, eastbound, at 17th Avenue

Lincoln Way, eastbound, at 18th Avenue

Saranya Konala, 646-2125

No objections.

3. Mission Street, at Lowell Street and at Naglee Avenue – Turn Restrictions

ESTABLISH – NO TURN ON RED

Lowell Street, westbound, at Mission Street

Naglee Avenue, eastbound, at Mission Street

André Wright, 646-2285

Withdrawn.

4. 14th Street and Folsom Street – Tow-Away, No Stopping Anytime

ESTABLISH – TOW-AWAY, NO STOPPING ANYTIME

14th Street, north side, from Folsom Street to 38 feet easterly (removes 2 parking spaces)

Shivam Vohra, 646-2114

No objections.

5. 5th Street, from Bluxome Street to Townsend Street – Bike Lane

ESTABLISH – CLASS II BIKEWAY

5th Street, southbound, from Townsend Street to 125 feet northerly

ESTABLISH – LEFT LANE MUST TURN LEFT

5th Street, southbound, at Townsend Street

Thalia Leng, 701-4762

No objections.

6. Geneva Avenue at Northbound I-280 on ramp – Right Lane Must Turn Right
ESTABLISH – RIGHT LANE MUST TURN RIGHT EXCEPT MUNI, TAXIS AND BIKES
Geneva Avenue, westbound, at northbound I-280 on ramp
Dan Provence 701-4448

No objections.

7. Larkin Street, between Beach Street and North Point Street – On-Street Bicycle Parking
ESTABLISH – NO PARKING ANYTIME EXCEPT BICYCLES
Larkin Street, west side, from Beach Street to 36 feet southerly (22-foot space removes metered parking space #3023)
Becca Homa, 646-2822

No objections.

8. Market Street at Dolores Street – Bike Share Station
ESTABLISH – NO PARKING EXCEPT BICYCLES (FOR BIKE SHARE STATION)
Market Street, south side, from 102 feet to 162 feet west of Dolores Street (60-foot bike share station in three metered parking spaces 2045, 2047, and 2049).

ESTABLISH – TOW AWAY NO STOPPING ANY TIME

Market Street, south side, from 95 feet to 102 feet west of Dolores Street (extending existing TANSAT zone to 102 feet)
Laura Stonehill, 701-4789

No objections.

9. 34th Avenue, between Lincoln Way and Irving Street – Bicycle Route
ESTABLISH – CLASS III BICYCLE ROUTE
34th Avenue, between Lincoln Way and Irving Street

RESCIND – CLASS III BICYCLE ROUTE

Sunset Boulevard, between Martin Luther King Drive and Irving Street
Irving Street, between Sunset Boulevard and 34th Avenue
Will Tabajonda, 701-4452

No objections.

10. 5th Street and Howard Street – Tow-Away, No Stopping Anytime and Bulb-Out
ESTABLISH - TOW-AWAY, NO STOPPING ANYTIME
ESTABLISH - SIDEWALK WIDENING
Howard Street, south side, from 5th Street to 25 feet easterly (6-foot wide bulb, removes general metered parking #895)
5th Street, east side, from Howard Street to 32 feet southerly (6-foot wide bulb)
Shahram Shariati, 701-5659

No objections.

11. 8th Street and Minna Street – Raised Crosswalk

ESTABLISH – RAISED CROSSWALK

8th Street, west crosswalk, at Minna Street

Shahram Shariati, 701-5659

No objections.

12. Bay Street and Hyde Street – Tow-Away, No Stopping Anytime and Bulb-Out

ESTABLISH – TOW-AWAY, NO STOPPING ANYTIME

ESTABLISH – SIDEWALK WIDENING

Bay Street, south side, from Hyde Street to 23 feet westerly (6-foot wide bulb)

Bay Street, south side, from Hyde Street to 23 feet easterly (5-foot wide bulb)

ESTABLISH – RED ZONE

Hyde Street, west side, from Bay Street to 20 feet southerly

Shahram Shariati, 701-5659

No objections.

13. Eddy Street and Taylor Street – Tow-Away, No Stopping Anytime and Bulb-Outs

ESTABLISH – TOW-AWAY, NO STOPPING ANYTIME

ESTABLISH – SIDEWALK WIDENING

A. Eddy Street, north side, from Taylor Street to 22 feet westerly (6-foot wide bulb)

B. Eddy Street, south side, from Taylor Street to 82 feet easterly (6-foot wide bus bulb)

C. Taylor Street, west side, from Eddy Street to 25 feet northerly (4-foot wide bulb, removes yellow metered parking #203)

D. Taylor Street, east side, from Eddy Street to 19 feet southerly (4-foot wide bulb)

Shahram Shariati, 701-5659

No objections.

14. Ellis Street and Jones Street – Tow-Away, No Stopping Anytime and Bulb-Out

ESTABLISH – TOW-AWAY, NO STOPPING ANYTIME

ESTABLISH – SIDEWALK WIDENING

A. Ellis Street, north side, from Jones Street to 82 feet westerly (4-foot wide bus bulb, removes general metered parking #408)

B. Ellis Street, south side, from Jones Street to 25 feet easterly (6-foot wide bulb)

C. Jones Street, west side, from Ellis Street to 15 feet northerly (4-foot wide bulb)

D. Jones Street, east side, from Ellis Street to 25 feet southerly (6-foot wide bulb, removes general metered parking #330)

Shahram Shariati, 701-5659

No objections.

15. Diamond Heights Boulevard at Diamond Street – Crosswalk, Bus Zone, Red Zone

ESTABLISH – BUS ZONE

Diamond Heights Boulevard, west side, from Diamond Street north crosswalk to 85 feet southerly (shifts existing bus zone 40 feet south)

ESTABLISH – MARKED CROSSWALK

Diamond Heights Boulevard at Diamond Street, north crosswalk crossing Diamond Heights Boulevard

ESTABLISH – RED ZONE

Diamond Heights Boulevard, west side, from Diamond Street to 30 feet northerly Ken Kwong, 701-4575

No objections.

16. Various locations on Market Street, between 3rd Street and 11th Street – Turn

Restrictions

ESTABLISH – NO LEFT TURN EXCEPT TAXIS FROM 11PM to 6AM & EXCEPT MUNI AT ALL TIMES

Market Street, westbound, at 11th Street (replaces NO LEFT TURN EXCEPT MUNI)

ESTABLISH – NO LEFT TURN EXCEPT TAXIS FROM 1AM to 5AM & EXCEPT MUNI AT ALL TIMES

Market Street, eastbound, at 3rd Street (replaces NO LEFT TURN EXCEPT MUNI)

ESTABLISH – NO LEFT TURN EXCEPT MUNI

Market Street, westbound, at 6th Street (replaces NO LEFT TURN)
Ian Trout, 701-4556

No objections.

17. Filbert Street and Sansome Street – Angle Parking

ESTABLISH – 60 DEGREE BACK-IN ANGLE PARKING

Filbert Street, south side, from Sansome Street to 60 feet westerly

ESTABLISH – UNMETERED MOTORCYCLE PARKING

Filbert Street, south side, from 60 feet to 68 feet west of Sansome Street

ESTABLISH – NO PARKING ANYTIME

Filbert Street, south side, from 68 feet west of Sansome Street to western terminus of street

Bryant Woo, 701-4569

No objections.

18. 4th Street at Harrison Street and at Bryant Street – Tow-Away, No Stopping Anytime
ESTABLISH – CROSSWALK

4th Street at Harrison Street (SE corner I-80 on-ramp crossing)

ESTABLISH – TOW AWAY, NO STOPPING ANYTIME

ESTABLISH – SIDEWALK WIDENING

- A. 4th Street, east side, from Harrison Street to 32 feet northerly (for 6-foot sidewalk widening)
 - B. 4th Street, west side, from Harrison Street to 40 feet northerly (for 6-foot sidewalk widening)
 - C. 4th Street, west side, from proposed crosswalk to 85 feet south of Harrison Street (for sidewalk widening up to 8 feet)
 - D. Harrison Street, north side, from 4th Street to 43 feet easterly (for 7-foot sidewalk widening)
 - E. Harrison Street, north side, from 4th Street to 113 westerly (for 7-foot sidewalk widening)
 - F. Harrison Street, south side, from new crosswalk to 47 feet west of 4th Street (for 6-foot sidewalk widening)
 - G. Bryant Street, north side, from 4th Street to 33 feet westerly (for 7-foot sidewalk widening)
 - H. Bryant Street, south side, from 4th Street to 41 feet westerly (for 7-foot sidewalk widening)
- Kimberly Leung, 701-4653

No objections. Verify requirements for work over cisterns.

19. Geary Corridor, between Market Street and Stanyan Street (includes O'Farrell) – Geary Bus Rapid Transit Project - Phase 1

ESTABLISH – TRAFFIC SIGNALS

Geary Boulevard at Cook Street (replaces two-way STOP control)

Geary Boulevard at Buchanan Street (new mid-block pedestrian crossing)

ESTABLISH – TRANSIT ONLY LANE AT ALL TIMES

- A. Geary Boulevard, eastbound, from Lyon Street to Gough Street
- B. Geary Boulevard, westbound, from Gough Street to Lyon Street
- C. Geary Boulevard, eastbound, from Masonic Boulevard to Presidio Avenue

- D. Geary Boulevard, eastbound, from Palm Avenue to Wood Street
- E. Geary Boulevard, westbound, from Wood Street to Palm Avenue
- F. O'Farrell Street, eastbound, from Powell Street to Market Street

ESTABLISH – MUNI AND GOLDEN GATE TRANSIT ONLY LANE AT ALL TIMES
Geary Boulevard, westbound, from Presidio Avenue to Masonic Boulevard

ESTABLISH – CROSSWALK

- A. Steiner Street, east side at Geary Boulevard
- B. Webster Street, east side at Geary Boulevard
- C. Webster Street, west side at Geary Boulevard
- D. Buchanan Street, mid-block at Geary Boulevard

RESCIND – PEDESTRIAN OVERCROSSING STRUCTURE
Steiner Street, west side at Geary Boulevard

ESTABLISH – SIDEWALK WIDENING

ESTABLISH – TOW-AWAY NO STOPPING ANYTIME

- A. Geary Boulevard, north side, from Divisadero Street to 158 feet easterly (rescinds metered parking spaces #2134 and #2132 for a 10-foot wide transit/sidewalk bulb)
- B. Geary Boulevard, north side, from Scott Street to 182 feet easterly (rescinds metered parking spaces #2036, #2034, #2032, #2030 and #2028 for a 8-foot wide transit/sidewalk bulb)
- C. Geary Boulevard, south side, from Scott Street to 90 feet easterly (for an 8-foot wide transit/sidewalk bulb)
- D. Geary Boulevard, north side, from Avery Street to Fillmore Street (rescinds metered parking spaces #1818 and #1816 for a 4-foot wide transit/sidewalk bulb)
- E. Geary Boulevard, south side, from Fillmore Street to 167 feet easterly (rescinds metered parking spaces #1747, #1745, #1743 and #1739 for a 4-foot wide transit/sidewalk bulb)
- F. Geary Boulevard, north side, from Laguna Street to 160 feet easterly (removes two parking spaces for an 8-foot wide transit/sidewalk bulb)
- G. Geary Boulevard, north side, from 53 feet to 155 feet west of Gough Street (for an 8-foot wide transit/sidewalk bulb)
- H. Geary Street, north side, from Powell Street to 138 feet westerly (for a 6-foot wide transit/sidewalk bulb)

- I. Geary Street, north side, from Kearny Street to 146 feet westerly (to upgrade and extend the existing 4-foot wide transit/sidewalk bulb)
- J. O'Farrell Street, south side, from Leavenworth to 165 feet easterly (rescinds metered parking spaces #531, #529 and #527 for a 6-foot wide transit/sidewalk bulb)
- K. O'Farrell Street, south side, from 134 feet to 285 feet east of Stockton Street (rescinds metered commercial loading spaces #9, #11, #13 and #15 to upgrade and extend the existing 6-foot wide transit/sidewalk bulb)

ESTABLISH – SIDEWALK WIDENING

ESTABLISH – NO PARKING ANYTIME

- A. Geary Boulevard, south side, from Cook Street to 19 feet westerly (for a 6-foot wide pedestrian/sidewalk bulb)
- B. Geary Boulevard, north side, from Cook Street to 34 feet easterly (removes metered parking space #3022 for a 6-foot wide pedestrian/sidewalk bulb)
- C. Baker Street, west side, from Geary Boulevard to 20 feet northerly (for a 6-foot wide pedestrian/sidewalk bulb)
- D. Geary Boulevard, south side, from Divisadero Street to 28 feet easterly (removes one parking space for a 6-foot wide pedestrian/sidewalk bulb)
- E. Scott Street, east side, from Geary Boulevard to 28 feet northerly (rescinds 20 foot blue zone, to be relocated north, for 4-foot wide pedestrian/sidewalk bulb)
- F. Scott Street, east side, from Geary Boulevard to 27 feet southerly (removes one parking space for a 6-foot wide pedestrian/sidewalk bulb)
- G. Steiner Street, west side, from Geary Boulevard to 30 feet northerly (rescinds metered space #1603 for a 4-foot wide pedestrian/sidewalk bulb)
- H. Steiner Street, west side, from Geary Boulevard to 28 feet southerly (rescinds metered space #1529 for a 4-foot wide pedestrian/sidewalk bulb)
- I. Geary Boulevard, north side, from Steiner Street to 26 feet easterly
- J. Geary Boulevard, south side, from Steiner Street to 30 feet easterly (rescinds 20 foot blue zone, to be relocated east, for a 4-foot wide pedestrian/sidewalk bulb)
- K. Fillmore Street, east side, from Geary Boulevard to 28 feet southerly (rescinds metered parking space #1530 for a 6-foot wide pedestrian/sidewalk bulb)
- L. Geary Boulevard, north side, from Webster Street to 20 feet westerly (for a 4-foot wide pedestrian/sidewalk bulb)

- M. Webster Street, west side, from Geary Boulevard to 23 feet northerly (for a 6-foot wide pedestrian/sidewalk bulb)
- N. Geary Boulevard, south side, from Webster Street to 20 feet westerly (for a 4-foot wide pedestrian/sidewalk bulb)
- O. Webster Street, west side, from Geary Boulevard to 26 feet southerly (removes one parking space for a 6-foot wide pedestrian/sidewalk bulb)
- P. Webster Street, east side, from Geary Boulevard to 30 feet northerly (rescinds 22-foot blue zone, to be relocated north, for a 6-foot wide pedestrian/sidewalk bulb)
- Q. Geary Boulevard, south side, from Webster Street to 44 feet easterly (removes two parking spaces for a 5-foot wide pedestrian/sidewalk bulb)
- R. Webster Street, east side, from Geary Boulevard to 56 feet southerly (removes two parking spaces for a 6-foot wide pedestrian/sidewalk bulb)
- S. Geary Boulevard, south side, from 310 feet to 440 feet east of Webster Street (removes three parking spaces for an 8-foot wide pedestrian/sidewalk bulb)
- T. Geary Boulevard, north side, from 400 feet to 470 feet west of Laguna Street (rescinds metered parking spaces #1614, #1616 and #1618 for an 8-foot wide pedestrian/sidewalk bulb)
- U. Geary Boulevard, north side, from Laguna Street to 43 feet westerly (rescinds metered parking space #1504 and 22-foot blue zone, to be relocated east, for a 14-foot wide pedestrian/sidewalk bulb)
- V. Laguna Street, west side, from Geary Boulevard to 21 feet northerly (for a 6-foot wide pedestrian/sidewalk bulb)
- W. Larkin Street, west side, from Geary Street to 36 feet southerly (for a 6-foot wide pedestrian/sidewalk bulb)
- X. Geary Street, north side, from Hyde Street to 18 feet westerly (for a 6-foot wide pedestrian/sidewalk bulb)
- Y. Hyde Street, west side, from Geary Street to 20 feet northerly (for a 6-foot wide pedestrian/sidewalk bulb)
- Z. Hyde Street, east side, from Geary Street to 21 feet southerly (for a 6-foot wide pedestrian/sidewalk bulb)
- AA. Leavenworth Street, west side, from Geary Street to 17 feet southerly (for a 4-foot wide pedestrian/sidewalk bulb)

- BB. Leavenworth Street, east side, from Geary Street to 26 feet northerly (removes one parking space for a 6-foot wide pedestrian/sidewalk bulb)
 - CC. Jones Street, west side, from Geary Street to 19 feet southerly (for a 6-foot wide pedestrian/sidewalk bulb)
 - DD. Jones Street, east side, from Geary Street to 21 feet southerly (rescinds yellow metered loading zone #530 for a 6-foot wide pedestrian/sidewalk bulb)
 - EE. Taylor Street, west side, from Geary Street to 26 feet southerly (for a 6-foot wide pedestrian/sidewalk bulb)
 - FF. Geary Street, north side, from Mason Street to 23 feet westerly (rescinds 20-foot blue zone, to be relocated west, for a 6-foot wide pedestrian/sidewalk bulb)
 - GG. Mason Street, east side, from Geary Street to 11 feet southerly (rescinds yellow metered loading zone #346 for a 4-foot wide pedestrian/sidewalk bulb)
 - HH. Larkin Street, west side, from O'Farrell Street to 23 feet northerly (rescinds metered parking space #801 for a 6-foot wide pedestrian/sidewalk bulb)
 - II. Larkin Street, east side, from O'Farrell Street to 21 feet southerly (for a 6-foot wide pedestrian/sidewalk bulb)
 - JJ. Hyde Street, west side, from O'Farrell Street to 28 feet southerly (rescinds metered commercial loading zone #425 for a 6-foot wide pedestrian/sidewalk bulb)
 - KK. Hyde Street, east side, from O'Farrell Street to 23 feet northerly (for a 6-foot wide pedestrian/sidewalk bulb)
 - LL. Leavenworth Street, west side, from O'Farrell Street to 28 feet northerly (rescinds metered parking space #501 for a 4-foot wide pedestrian/sidewalk bulb)
 - MM. Jones Street, west side, from O'Farrell Street to 24 feet southerly (rescinds a passenger loading zone for a 6-foot wide pedestrian/sidewalk bulb)
 - NN. Jones Street, east side, from O'Farrell Street to 23 feet northerly (for a 6-foot wide pedestrian/sidewalk bulb)
 - OO. Taylor Street, west side, from O'Farrell Street to 15 feet northerly (for a 4-foot wide pedestrian/sidewalk bulb)
- RESCIND – SIDEWALK WIDENING**
- A. Geary Boulevard, north side, from Steiner Street to 22 feet westerly (rescinds 6-foot wide pedestrian/sidewalk bulb)
 - B. Geary Boulevard, south side, from Steiner Street to 22 feet westerly (rescinds 6-foot wide pedestrian/sidewalk bulb)

- C. O'Farrell Street, south side, from 179 feet to 299 feet west of Taylor Street (rescinds 120-foot transit/sidewalk bulb)

RESCIND – BUS ZONE

- A. Geary Boulevard, south side, from Stanyan Street to 75 feet westerly
- B. Geary Boulevard, north side, from Commonwealth Avenue to 73 feet westerly (establishes three parking spaces)
- C. Geary Boulevard, south side, from Collins Street to 101 feet easterly (establishes five parking spaces)
- D. Geary Boulevard, north side, from Collins Street to 79 feet easterly (establishes three parking spaces)
- E. Geary Boulevard, south side, from Masonic Boulevard to 30 feet westerly
- F. Geary Boulevard, south side, from Presidio Avenue to 100 feet westerly
- G. Geary Boulevard, north side, from Scott Street to 100 feet easterly (moves existing bus zone 100 feet east)
- H. Geary Boulevard, south side, from 75 feet to 100 feet east of Scott Street (shortens existing bus zone by 25 feet)
- I. Geary Boulevard, south side, from 100 feet to 236 feet west of Fillmore Street (establishes five parking spaces)
- J. Geary Boulevard, south side, from Webster Street to 87 feet westerly
- K. Geary Boulevard, north side, from Webster Street to 78 feet easterly (moves existing bus zone 60 feet east)
- L. Geary Boulevard, north side, from Laguna Street to 70 feet easterly (moves existing bus zone 70 feet east)
- M. Starr King Way, south side, from Gough Street to 140 feet easterly
- N. Geary Street, north side, from Hyde Street to 100 feet westerly (establishes four parking spaces)
- O. O'Farrell Street, south side, from Larkin Street to 120 feet westerly (establishes five parking spaces)
- P. O'Farrell Street, south side, from Hyde Street to 101 feet easterly (establishes five parking spaces)
- Q. O'Farrell Street, south side, from 179 feet to 299 feet west of Taylor Street (moves existing bus zone 179 feet east, establishes six parking spaces)

ESTABLISH – BUS ZONE

- A. Geary Boulevard, south side, from Masonic Boulevard to 165 feet easterly
- B. Geary Boulevard, north side, from 75 feet to 100 feet west of Baker Street (extends existing bus zone by 25 feet)
- C. Geary Boulevard, south side, from 110 feet to 133 feet west of Divisadero Street (extends existing bus zone by 23 feet)
- D. Geary Boulevard, north side, from 100 feet to 160 feet east of Scott Street (moves existing bus zone 100 feet east)
- E. Geary Boulevard, north side, from Avery Street to 54 feet easterly (extends existing bus zone by 54 feet)
- F. Geary Boulevard, south side, from Fillmore Street to 167 feet easterly
- G. Geary Boulevard, north side, from 60 feet to 180 feet east of Webster Street (moves existing bus zone 60 feet east, rescinds metered parking spaces #1650, #1648 and #1646)
- H. Geary Boulevard, north side, from 70 feet to 130 feet east of Laguna Street (moves existing bus zone 70 feet east)
- I. Geary Boulevard, north side, from 140 feet to 155 feet west of Gough Street (extends existing bus zone by 15 feet)
- J. Geary Boulevard, south side, from 20 feet to 170 feet west of Gough Street (removes seven parking spaces)
- K. O'Farrell Street, south side, from Larkin Street to 100 feet easterly (rescinds metered parking spaces #735, #737, #739, #741 and #743)
- L. O'Farrell Street, south side, from Taylor Street to 120 feet westerly (moves existing bus zone 179 feet east, rescinds 44-foot passenger loading zone and metered spaces #403 and #409)
- M. O'Farrell Street, south side, from 209 feet to 285 feet east of Stockton Street (extends existing bus zone by 76 feet)

ESTABLISH – NO PARKING ANYTIME

- A. Geary Boulevard, south side, from Beaumont Avenue to 42 feet westerly (rescinds metered parking space #3403)
- B. Geary Boulevard, north side, from Commonwealth Avenue to 47 feet easterly (rescinds green metered parking space #3330-G)
- C. Commonwealth Avenue, west side, from Geary Boulevard to 10 feet northerly (removes one parking space)

- D. Geary Boulevard, south side, from Parker Avenue to 25 feet westerly (rescinds metered parking space #3301)
- E. Geary Boulevard, north side, from Parker Avenue to 26 feet easterly (rescinds metered parking space #3222)
- F. Spruce Street, east side, from Geary Boulevard to 10 feet southerly (removes one parking space)
- G. Cook Street, east side, from Geary Boulevard to 10 feet southerly (removes one parking space)
- H. Cook Street, west side, from Geary Boulevard to 10 feet northerly (removes one parking space)
- I. Geary Boulevard, south side, from Blake Street to 25 feet westerly (rescinds metered parking space #3003)
- J. Blake Street, west side, from Geary Boulevard to 10 feet northerly (removes one parking space)
- K. Blake Street, east side, from Geary Boulevard to 10 feet southerly (removes one parking space)
- L. Geary Boulevard, south side, from Collins Street to 25 feet westerly (rescinds metered parking space #2901)
- M. Collins Street, west side, from Geary Boulevard to 10 feet northerly (removes one parking space)
- N. Collins Street, east side, from Geary Boulevard to 15 feet southerly (removes one parking space)
- O. Wood Street, west side, from Geary Boulevard to 10 feet northerly (removes one parking space)
- P. Wood Street, east side, from Geary Boulevard to 10 feet southerly (removes one parking space)
- Q. Emerson Street, west side, from Geary Boulevard to 10 feet northerly (removes one parking space)
- R. Geary Boulevard, north side, from Presidio Avenue to 10 feet easterly (removes one parking space)
- S. Lyon Street, west side, from Geary Boulevard to 10 feet northerly (removes one parking space)

- T. Broderick Street, west side, from Geary Boulevard to 10 feet northerly (removes one parking space)
- U. Geary Boulevard, south side, from Scott Street to 20 feet westerly (removes one parking space)
- V. Geary Boulevard, south side, from Fillmore Street to 20 feet westerly (rescinds yellow metered loading space #1801)
- W. Geary Boulevard, south side, from Franklin Street to 18 feet easterly (rescinds metered parking space #1139)
- X. Geary Boulevard, south side, from Van Ness Avenue to 20 feet easterly (rescinds metered parking space #1045)
- Y. O'Farrell Street, south side, from Larkin Street to 20 feet westerly

ESTABLISH – TOW-AWAY NO STOPPING ANYTIME

- A. Geary Boulevard, south side, from Masonic Boulevard to 50 feet westerly
- B. Geary Boulevard, south side, from Masonic Boulevard to Presidio Avenue (removes fourteen parking spaces)
- C. Geary Boulevard, south side, from Presidio Avenue to 50 feet easterly (removes three parking spaces)
- D. Geary Boulevard, north side, from Steiner Street to 271 feet westerly (lateral bus lane transition, rescinds 18-foot blue zone, 33-foot passenger loading zone and metered parking spaces #1904, #1906, #1912, #1914, #1916, #1918, #1920, #1922, #1924 and #1926)
- E. Geary Boulevard, north side, from Steiner Street to Avery Street (rescinds metered parking spaces #1844, #1842, #1838, #1836, #1834, #1832 and #1830)
- F. Geary Boulevard, south side, from Webster Street to 226 feet westerly (rescinds metered parking spaces #1711, #1713, #1715, #1717, #1719, #1721 and #1723)
- G. Geary Boulevard, north side, from Fillmore Street to Webster Street (rescinds 44-foot passenger loading zone and metered parking spaces #1704-G, #1706, #1708, #1712, #1714, #1716, #1718, #1720, #1722, #1734, #1742 and #1746)
- H. Geary Boulevard, south side, from 44 feet to 133 feet east of Webster Street (lateral bus lane transition, removes 4 parking spaces)
- I. Geary Boulevard, south side, from Gough Street to 20 feet westerly (removes one parking space)

RESCIND – TOW-AWAY NO STOPPING ANYTIME, 4 PM TO 6 PM

- A. Geary Boulevard, south side, from Gough Street to Franklin Street
- B. Geary Boulevard, south side, from Franklin Street to Van Ness Avenue
- C. Geary Boulevard, north side, from Van Ness Avenue to Polk Street

ESTABLISH – GENERAL METERED PARKING, 2-HOUR TIME LIMIT, 9 AM TO 6 PM, MONDAY THROUGH SATURDAY

- A. Geary Boulevard, south side, from 15 feet to 125 feet east of Gough Street (establishes five general metered parking spaces)
- B. Geary Street, north side, from 120 feet to 246 feet east of Van Ness Avenue (establishes six general metered parking spaces)
- C. O'Farrell Street, south side, from 86 feet to 186 feet west of Larkin Street (rescinds metered yellow loading spaces #811, #813 and #815, to be relocated east, and establishes five general metered parking spaces)
- D. O'Farrell Street, south side, from 41 feet to 141 feet east of Hyde Street (rescinds yellow metered loading zones #633 and #631, to be relocated west, and establishes five general metered parking spaces)
- E. O'Farrell Street, south side, from Mason Street to 58 feet easterly (establishes three general metered parking spaces)

ESTABLISH – GREEN METERED PARKING, 30-MINUTE TIME LIMIT, 9 AM TO 6 PM, MONDAY THROUGH SATURDAY

- A. Geary Boulevard, north side, from 119 feet to 141 feet east of Jordan Avenue (converts general metered parking space #3412 to one green metered parking space)
- B. Geary Boulevard, north side, from 5 feet to 47 feet west of Commonwealth Avenue (establishes two green metered parking spaces)
- C. Geary Boulevard, north side, from 142 feet to 162 feet east of Commonwealth Avenue (converts general metered space #3318 to a green metered parking space)
- D. Geary Boulevard, south side, from 98 feet to 114 feet west of Parker Avenue (establishes one green metered parking space for compact cars)
- E. Geary Boulevard, north side, from 57 feet to 79 feet east of Collins Street (establishes one green metered parking space)
- F. Geary Street, north side, from 18 feet to 36 feet west of Hyde Street (establishes one green metered parking space)

ESTABLISH – GREEN METERED PARKING, 15-MINUTE TIME LIMIT, 9 AM TO 6 PM, MONDAY THROUGH SATURDAY

Geary Boulevard, south side, from 81 feet to 101 feet east of Collins Street (establishes one green metered parking space)

ESTABLISH – YELLOW METERED LOADING ZONE, 30-MINUTE TIME LIMIT, 7 AM TO 6 PM, MONDAY THROUGH SATURDAY

- A. Geary Boulevard, north side, from 97 feet to 119 feet east of Jordan Avenue (converts green metered parking to one yellow metered loading zone)
- B. Jones Street, east side, from 21 feet to 51 feet south of Geary Street (establishes 30-foot yellow metered loading zone)
- C. O'Farrell Street, south side, from 20 feet to 86 feet west of Larkin Street (establishes three yellow metered loading zones)

ESTABLISH – YELLOW METERED LOADING ZONE, 60-MINUTE TIME LIMIT, 7 AM TO 4 PM, MONDAY THROUGH SATURDAY

Geary Street, north side, from 83 feet to 106 feet west of Mason Street (shifts zone 20 feet west, rescinds metered parking space #410)

ESTABLISH – YELLOW 6-WHEEL COMMERCIAL METERED LOADING ZONE, 30-MINUTE TIME LIMIT, 8 AM TO 6 PM, MONDAY THROUGH SATURDAY

Geary Boulevard, south side, from 75 feet to 115 feet west of Stanyan Street (changes yellow metered loading to yellow 6-wheel commercial metered loading)
Geary Boulevard, south side, from 100 feet to 225 feet west of Fillmore Street (establishes five yellow 6-wheel commercial metered loading spaces)

ESTABLISH – YELLOW 6-WHEEL COMMERCIAL METERED LOADING ZONE, 30-MINUTE TIME LIMIT, 9 AM TO 6 PM, MONDAY THROUGH FRIDAY

O'Farrell Street, south side, from 100 feet to 136 feet east of Larkin Street (rescinds general metered parking spaces #733 and #731)
O'Farrell Street, south side, from Hyde Street to 41 feet easterly (establishes two yellow 6-wheel commercial metered loading spaces)

ESTABLISH – YELLOW 6-WHEEL COMMERCIAL METERED LOADING ZONE, 60-MINUTE TIME LIMIT, 7 AM TO 4 PM, MONDAY THROUGH SATURDAY

Geary Street, north side, from 43 feet to 83 feet west of Mason Street (shifts zones 20 feet west, rescinds yellow metered loading space #408)

ESTABLISH – GENERAL METERED BACK-IN-ANGLE PARKING, 4-HOUR TIME LIMIT, 9 AM TO 6 PM, MONDAY THROUGH SATURDAY

Geary Boulevard, north side, from 182 feet to 482 feet east of Scott Street (rescinds 15 metered parallel parking spaces, and establishes 25 metered parking spaces)
Geary Boulevard, south side, from 90 feet to 513 feet east of Scott Street (rescinds 19 metered parallel parking spaces, and establishes 31 metered parking spaces)

ESTABLISH – BLUE ZONE

- A. Geary Boulevard, south side, from Collins Street to 21 feet easterly (establishes blue zone)
- B. Scott Street, east side, from 28 feet to 48 feet north of Geary Boulevard (shifts blue zone 20 feet north, rescinds metered parking space #1504)
- C. Steiner Street, east side, from Geary Boulevard to 19 feet northerly (relocates blue zone to Steiner Street, rescinds metered parking space #1602)
- D. Geary Boulevard, south side, from 30 feet to 50 feet east of Steiner Street (shifts blue zone 25 feet east, rescinds green metered parking space #1843-G)
- E. Webster Street, east side, from 30 feet to 52 feet north of Geary Boulevard (shifts blue zone 22 feet north, rescinds metered parking space #1054)
- F. Laguna Street, east side, from Geary Boulevard to 18 feet northerly (shifts blue zone east, rescinds metered parking space #1502)
- G. Geary Street, north side, from 23 feet to 43 feet west of Mason Street (shifts blue zone 20 feet west, rescinds metered commercial loading space #404)

ESTABLISH – PASSENGER LOADING ZONE AT ALL TIMES

- Steiner Street, west side, from 30 feet to 52 feet north of Geary Boulevard (relocates passenger loading zone to Steiner Street, rescinds metered parking space #1605)
- Jones Street, east side, from 51 feet to 81 feet south of Geary Street (shifts passenger loading zone south, rescinds metered parking space #522)

ESTABLISH – TOW-AWAY NO PARKING AT ALL TIMES, SHUTTLE BUS ZONE, DAILY

- Geary Boulevard, north side, from 180 feet to 236 feet east of Webster Street (shifts shuttle bus loading zone west, rescinds metered parking spaces #1644, #1642 and #1640)

ESTABLISH – RIGHT TURN LANE

- A. Geary Boulevard, south side, from Scott Street to 60 feet westerly
- B. Geary Boulevard, north side, from Scott Street to 100 feet easterly
- C. Geary Boulevard, south side, from Laguna Street to 120 feet westerly
- D. Geary Boulevard, north side, from Laguna Street to 70 feet easterly
- E. Geary Boulevard, south side, from Cleary Court to 100 feet westerly
- F. Geary Street, north side, from Van Ness Avenue to 120 feet easterly
- G. O'Farrell Street, south side, from Cyril Magnin Street to 94 feet westerly

ESTABLISH – RIGHT TURN LANE

EXTABLISH – TOW-AWAY NO STOPPING ANYTIME

- A. Geary Boulevard, south side, from Stanyan Street to 75 feet westerly
- B. Geary Boulevard, south side, from 261 feet to 324 feet west of Divisadero Street (rescinds metered parking spaces #2227, #2229 and #2231)
- C. Geary Boulevard, north side, from 75 feet to 165 feet west of Divisadero Street (rescinds metered parking spaces #2214, #2216, #2218 and #2224)
- D. Geary Boulevard, south side, from Steiner Street to 80 feet westerly (rescinds metered parking spaces #1903, #1905 and #1907)
- E. Geary Boulevard, north side, from Webster Street to 60 feet easterly
- F. Geary Boulevard, north side, from 300 feet to 391 feet east of Webster Street (rescinds metered parking spaces #1626, #1624, #1622 and #1620)
- G. Geary Boulevard, north side, from Peter Yorke Way to 50 feet easterly (rescinds metered parking spaces #32 and #30)

ESTABLISH – RIGHT LANE MUST TURN RIGHT EXCEPT MUNI

Geary Boulevard, eastbound, at Gough Street

ESTABLISH – LEFT TURN LANE

Geary Boulevard, eastbound, at Steiner Street

Daniel Mackowski, 701-5306

Hold.

DISCUSSION, INFORMATIONAL AND OTHER ITEMS NOT SCHEDULED FOR SFMTA PUBLIC HEARING



TASC MINUTES

TRANSPORTATION ADVISORY STAFF COMMITTEE

Thursday, August 11, 2016 at 10:40 AM
One South Van Ness Avenue, 7th Floor, Room #7080

SFMTA Sustainable Streets:		Harvey Quan
SFMTA Transit Operations:	Absent	
SFMTA Parking Enforcement:		Abe Davis
		Curtis Smith
SFMTA Taxi Services:		Michael Harris
Public Works:		Jonathan Diaz
Police Department:		Bernie Corry
		William Murray
Planning Department:		Paul Chasan
Fire Department:	Absent	
Guests:		John Francis
		Shahram Shariati
		Jamie Parks
		Mike Sallaberry
		John Nestor
		Ian Trout

MINUTES OF THE JULY 28, 2016 MEETING

The Committee to adopted the Minutes

PUBLIC HEARING SCHEDULING – CONSENT CALENDAR

The following Items for Public Hearing were considered routine by SFMTA Staff:

1. Donahue Street at Innes Avenue – Bus Zones

ESTABLISH – BUS ZONE

Donahue Street, west side, from Innes Avenue to 100 feet northerly

Donahue Street, east side, from Innes Avenue to 80 feet northerly

RESCIND – MUNI FLAG STOP

Innes Avenue, south side, west of Donahue Street

Tony Henderson, 701-5375

2. Sloat Boulevard at Everglade Drive – Red Zone

ESTABLISH – TOW AWAY NO PARKING ANY TIME

Sloat Boulevard, south side, from 75 feet to 100 feet east of Everglade Drive

(extends existing red zone by 25 feet)

Tony Henderson, 701-5375

No objections to all items.

FOR PUBLIC HEARING SCHEDULING – REGULAR CALENDAR

1. 4th Street at Harrison Street and at Bryant Street – Tow-Away, No Stopping Anytime

ESTABLISH – TOW AWAY, NO STOPPING ANYTIME

Bryant Street, south side, from 41 feet to 79 feet west of 4th Street (for 7-foot sidewalk widening)

RESCIND – METERED PARKING

RESCIND – SCHOOL BUS STOP 7 AM TO 3 PM SCHOOL DAYS

RESCIND – PASSENGER LOADING ZONE 3 PM TO 6 PM SCHOOL DAYS

Harrison Street, north side, from 113 feet to 136 feet west of 4th Street (space #812)

ESTABLISH – BUS ZONE

Harrison Street, north side, from 4th Street to 136 feet westerly (extends existing 113-foot bus zone to 136 feet)

Kimberly Leung, 701-4653

No objections.

2. 7th Street, between Townsend Street and 16th Street – Tow-Away No Stopping Anytime
ESTABLISH – TOW-AWAY NO STOPPING ANYTIME
7th Street, east side, from King Street to 100 feet northerly (removes 5 parking spaces)
7th Street, east side, from King Street to 365 feet southerly (removes 18 parking spaces)
7th Street, east side, from south side of Hubbell Street to 408 feet northerly (removes 20 parking spaces)
James Shahamiri, 701-4732

No objections north of Berry Street. TASC recommends retention of parking between 16th and Irwin.

3. 11th Street, between Market Street and Mission Street – Tow-Away, No Stopping Anytime, Yellow Zones, Parking
ESTABLISH – TOW AWAY NO STOPPING ANY TIME
11th Street, west side, from 147 feet to 170 feet south of Market Street
11th Street, west side, from 196 feet to 227 feet south of Market Street
11th Street, west side, from 262 feet to 325 feet south of Market Street

ESTABLISH – PARALLEL PARKING

11th Street, west side, from 100 feet to 224 feet north of Mission Street

ESTABLISH – TOW-AWAY NO STOPPING EXCEPT PERMITTED CAR SHARE VEHICLES

11th Street, east side, from 67 feet to 11 feet north of Mission Street (44-foot zone for 2 car share parking permit spaces--C500 & C501)

Darcie Alaba, 701-4545

No objections.

4. Battery Street and Sansome Street between Broadway and Pacific Avenue – Street Improvements
ESTABLISH – TOW AWAY NO STOPPING, 7 AM to 7 PM, EVERYDAY
Sansome Street, east side, from Broadway to Pacific Avenue (removes eight metered spaces, Meter #810, #812, #814, #816, #818, #820, #824, #826)

ESTABLISH – PART TIME BUS ZONE, 6 AM TO 7 PM, MONDAY THRU FRIDAY

Battery Street, west side, from Broadway to 100 feet southerly (rescinds full time bus zone, creates part time general metered parking)

Ian Trout, 701-4556

No objections.

5. 23rd Street and Arkansas Street – Red Zones and Stop Signs

ESTABLISH – RED ZONE

23rd Street, south side, from Arkansas Street to 25 feet westerly

23rd Street, south side, from Arkansas Street to 60 feet easterly

23rd Street, south side, from west Arkansas Street curb line to 40 feet easterly
(between crosswalks)

ESTABLISH – STOP SIGNS

23rd Street, eastbound and westbound, at Arkansas Street, making this intersection
an all-way STOP.

Shahram Shariati, 701-5659

***No objections provided a 10 foot clear path is maintained between Fire Engine
and Hydrant (planter placement).***

6. 23rd Street and Dakota Street – Stop Signs, Red Zones, and Bus Stops

ESTABLISH – STOP SIGNS

23rd Street, southbound and eastbound, at Dakota Street, making this intersection
an all-way STOP

ESTABLISH – RED ZONE

23rd Street, south side, from 23rd Street/Dakota Street to 100 feet westerly

ESTABLISH – MUNI FLAG STOP

23rd Street, south side, west of 23rd Street/Dakota Street

RESCIND – MUNI FLAG STOP

Dakota Street, south side, east of 23rd Street

Shahram Shariati, 701-5659

***No objections provided a 10 foot clear path is maintained between Fire Engine
and Hydrant (potential bus shelter).***

7. Missouri Street and Watchman Street – Stop Sign, Red Zones and Raised
Crosswalk

ESTABLISH – STOP SIGN

Watchman Street, westbound, at Missouri Street, stopping the stem of this "T"
intersection

ESTABLISH – RED ZONE

Missouri Street, west side, from Watchman Street to 65 feet southerly

Watchman Street, south side, from Missouri Street to 140 feet easterly

Watchman Street, north side, from Missouri Street to 100 feet easterly

ESTABLISH – RAISED CROSSWALK

Missouri Street, north crosswalk, at Watchman Street

Shahram Shariati, 701-5659

***No objections provided a 10 foot clear path is maintained between Fire Engine
and Hydrant (planter placement).***

8. Judah Street at 27th Avenue and at 29th Avenue – Red Zones
ESTABLISH – RED ZONE
Judah Street, north side, from 27th Avenue to 34 feet easterly (removes 2 unmetered parking spaces)
Judah Street, south side, from 29th Avenue to 46 feet westerly (removes 3 unmetered parking spaces)
Liliana Ventura, 701-4423

No objections.

9. 11th Street and Mission Street – Bike Facilities
ESTABLISH – CLASS II BIKE LANES
11th Street, east side, from Minna Street to Mission Street
11th Street, west side, from Mission Street to Minna Street

ESTABLISH – CLASS III BIKE ROUTE
11th Street, west side, from Mission Street to 100 feet northerly

ESTABLISH - RIGHT LANE MUST TURN RIGHT EXCEPT BIKES
11th Street, northbound, at Mission Street

ESTABLISH - RIGHT LANE MUST TURN RIGHT EXCEPT BIKES AND MUNI
11th Street, southbound, at Mission Street

ESTABLISH – NO RIGHT TURN ON RED EXCEPT BIKES
11th Street, northbound, at Mission Street

ESTABLISH – TOW-AWAY NO STOPPING ANYTIME
11th Street, east side, from Mission Street to 100 feet southerly
11th Street, west side, from Mission Street to 100 feet northerly
Will Tabajonda, 701-4452

No objections.

DISCUSSION, INFORMATIONAL AND OTHER ITEMS NOT SCHEDULED FOR SFMTA PUBLIC HEARING

1. 48th Avenue and Great Highway / Van Ness Avenue and North Point Street – Operator Convenience Facilities
As part of Phase 2C, Muni CP&C proposes the construction of a convenience facility both at the 48-bus terminal at 48th Ave/Great Highway, as well as at the Van Ness/North Point terminal serving the 28, 30S, and 49 buses
Jordan Toy, 581-5117

No objections.



SAN FRANCISCO PLANNING DEPARTMENT

San Francisco Public Works Preliminary Archeological Checklist (PAC)

1650 Mission St.
Suite 400
San Francisco,
CA 94103-2479

Reception:
415.558.6378

Fax:
415.558.6409

Planning
Information:
415.558.6377

PART I - PROJECT INFORMATION:

Date: _____ Public Works RA Staff: _____

Project name: _____

Case No: _____

Application type: EE CatEx

Project address: _____

APN/Cross streets: _____

EP Planner: _____ EP Archeologist: _____

Consultant Archeologist name/firm (if applicable): _____

1. PROJECT DESCRIPTION: (include description of construction methods, all potentially ground-disturbing activities including parking, staging, equipment and spoils storage, temporary and permanent work areas, utility lines)

2. POTENTIAL GROUND DISTURBANCE

Yes No Project Component
 Excavation (basement, elevator, utilities, seismic retrofit, remediation, underground vaults, septic tank system, culverts, etc.)

Maximum depth:

2. POTENTIAL GROUND DISTURBANCE (cont.)

- Pipeline replacement or installation (specify cut and cover, directional drilling, pipe bursting, etc):
- Tunnels, transport storage boxes
- Bore pits, test pits
- Shallow Building Foundation (Mat, Spread Footings, etc.)
Depth: _____
- Piles, piers, micropiles, pilings, piling replacement
- Grading, scraping
- Demolition
- Construction staging, spoils on unpaved area, fill
- Road construction
- Geotechnical trenching (dimensions) _____
- New rip rap
- Wharf or seawall modification
- Other (specify): _____

Anticipated maximum extent of project ground disturbance:

Vertical _____ Horizontal _____

APE Map Attached Y N

3. PREVIOUS SOILS DISTURBANCE AT PROJECT SITE:

Has the project site been previously disturbed by any of the following?

- | Yes | No | Component of disturbance |
|--------------------------|--------------------------|---|
| <input type="checkbox"/> | <input type="checkbox"/> | Existing Basement Depth: _____ Area: _____ |
| <input type="checkbox"/> | <input type="checkbox"/> | Existing Foundation (footings, perimeter, piles, micropiles, etc.) Depth: _____ |
| <input type="checkbox"/> | <input type="checkbox"/> | Site remediation/UST installation or removal, other excavation. Depth: _____ |
| <input type="checkbox"/> | <input type="checkbox"/> | Site Grading |
| <input type="checkbox"/> | <input type="checkbox"/> | Demolition |
| <input type="checkbox"/> | <input type="checkbox"/> | Dredging |
| <input type="checkbox"/> | <input type="checkbox"/> | Piling installation (depth): _____ |
| <input type="checkbox"/> | <input type="checkbox"/> | Riprap |
| <input type="checkbox"/> | <input type="checkbox"/> | Seawall construction |
| <input type="checkbox"/> | <input type="checkbox"/> | Other (specify): _____ |

4. Has the entire project area previously been disturbed to the maximum depth and extent of proposed project disturbance? Y N

(Attach documentary evidence such as plans and profiles of prior trenching, utility street occupancy, historic photos, specifications from prior projects, etc.)

List attachments provided: _____

Complete prior disturbance adequately documented. No further archeological assessment is required. EP Archeologist Concurs: _____

Prior ground disturbance is unknown or cannot be adequately documented; Part II Required.

PART II - ARCHEOLOGICAL DATA ASSESSMENT

1. ARCHIVAL AND DATA REVIEW

Dates of review: _____

Resources reviewed:

- Maher zone maps. Dates/ origin/ depth of fill if known _____
- Geotechnical data for project site and vicinity. Report _____
- EP Archeological GIS maps (all layers or specify applicable layers) _____

- Sanborn Insurance maps (1887-93, 1899-1900)
- U.S. Coast Survey maps (1853, 1857, 1869)
- Information Center archeological records search (attach request and response)
- NAHC Sacred Lands File
- Native American/ Ethnic group consultation
- Other: _____
- Historical Maps or other information provided by Public Works

2. ARCHEOLOGICAL FIELD INVENTORY

- Not warranted; no exposed ground surface in project area
- Results negative
- Results positive
- Survey results inconclusive

Archeologist/ Firm _____ Date of Survey _____

Attach Archeological Survey Report/Memo; may combine with results of archival review.

3. SUMMARY OF RESULTS OF PROJECT ASSESSMENT

Site History/Formation:

Recorded/documented archeological sites/ investigations on/in the vicinity of the project site:

4. CONCLUSIONS AND RECOMMENDATIONS

a) **NO EFFECTS TO ARCHEOLOGICAL RESOURCES EXPECTED:**

- Project effects limited to previously-disturbed soils
- Project effects limited to culturally sterile soils
- Based on assessment above, no potentially CEQA-significant archeological resources are expected within project area affected soils.

b) **AVOIDANCE AND TREATMENT MEASURES NECESSARY TO AVOID AN ADVERSE EFFECT TO SIGNIFICANT ARCHEOLOGICAL RESOURCES:**

- Discovery: potential to adversely affect archeological resources; may be avoided by implementation of **Public Works Standard Archeological Measure I** (Discovery during Construction), with implementation of Standard Archeological Measures II (Monitoring) and/or III (Testing/ Data Recovery) in the event of a discovery during construction.
- Monitoring: some potential for the project to adversely affect archeological resources; may be avoided by implementation of **Public Works Standard Archeological Measure II** (Archeological Monitoring) during construction.
- Testing/Data Recovery: potential of the project to adversely affect archeological resources; may be avoided by implementation of **Public Works Standard Archeological Measure III** (Archeological Testing/Data Recovery)
Implementation Required:
 prior to during construction.
- CEQA evaluation of the project requires preparation and implementation of an archeological research design and treatment plan (ARDTP) by a qualified archeological consultant. See attached scope of work for the ARDTP

Consultation requested.

 06/26/2023

Alicia C. Gonzales
Senior Planner (Archaeologist)
Environmental Planning Division
San Francisco Planning
Signature



SAN FRANCISCO PLANNING DEPARTMENT

MEMO

Date: August 3rd, 2018

To: Kimberly Leung
1 South Van Ness, 7th Floor
San Francisco, CA 94103

From: Vladimir Vallejo
San Francisco Planning Department

Re: Streamlined Approval Process for Certain Official Sidewalk Width Changes -
Bulb-outs and Sidewalk Widening Less than One Linear Block

Case No. Case No. 2018-006977GPR
Sidewalk Widening at Intersection of 4th Street and Harrison and Bryant Street.

Enclosure: RE_ 4th Street - I-80 Vision Zero Improvement Project - ground disturbance, July 31, 2018

1650 Mission St.
Suite 400
San Francisco,
CA 94103-2479

Reception:
415.558.6378

Fax:
415.558.6409

Planning
Information:
415.558.6377

The Department of Public Works (DPW) has established a streamlined process for approval of certain official sidewalk width changes that are supported by the City's General Plan, Better Streets Plan, and approved neighborhood streetscape plans. The proposed project has been forwarded to the Planning Department for review and comment as part of this streamlined process.

The proposed project involves two 6' wide bulb-outs into 4th Street at northeast and northwest corners, one 7' wide bulb-out into Harrison Street at northwest corner, and improvements at southwest corner at I-80 on ramp of 4th and Harrison Street. Also, includes two 7' wide bulb-outs into Bryant Street at northwest and southwest corners of 4th and Bryant Street. The bulb-out is proposed for pedestrian safety.

The Planning Department finds that the proposed sidewalk width changes are supported by the Better Streets Plan which was found to be consistent with the General Plan and the Priority Policies of Planning Code Section 101.1 (b) in Planning Commission Resolution No. 18212 and Board of Supervisors Ordinance 310-10; and incorporates those findings herein by reference. Please refer to the Design Guidelines of the Better Streets Plan, located at <http://www.sfbetterstreets.org/design-guidelines>, for direction on design, furniture placement, and materials selection within the proposed sidewalk change.

Project is eligible for CEQA clearance through the Better Streets Plan Final Mitigated Negative Declaration. Project is required to implement Mitigation Measure M-Cul-1: Archeological Resources: Accidental Discovery due to the amount of proposed ground disturbance (refer to attached email from project sponsor).

Memo