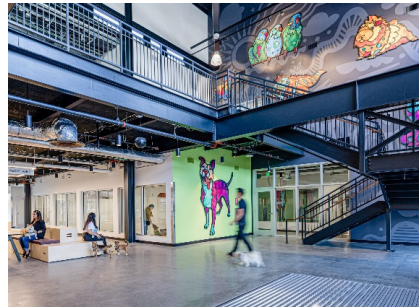


Sept. 15, 2023

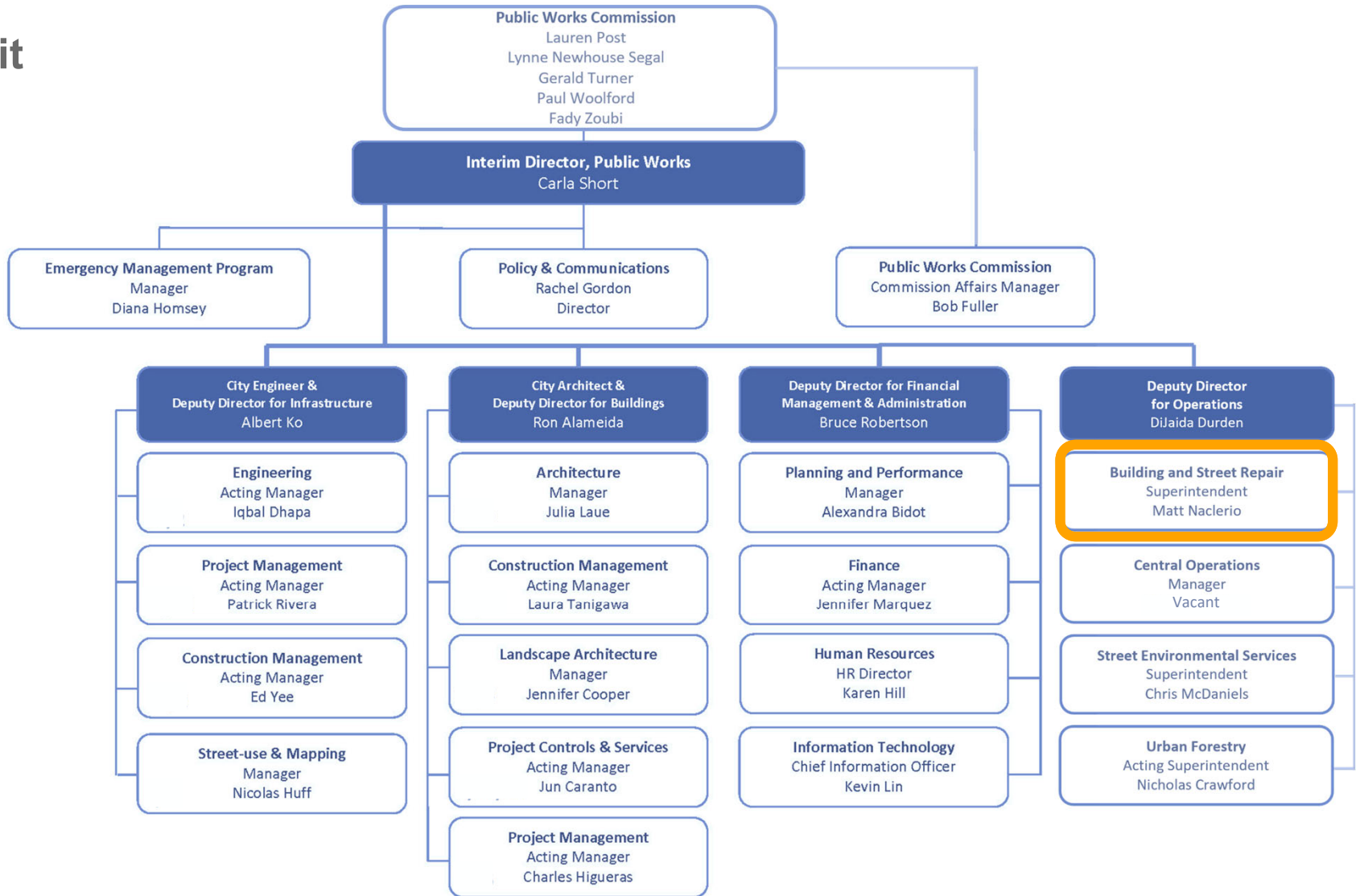
# Bureau of Building and Street Repair Overview

Matt T. Naclerio

Superintendent of the Bureau of Building and Street Repair



# Where We Fit



## Bureau of Building and Street Repair – Origin Story



- The Bureau of Building and Street Repair is a newly established bureau
- Combines the Bureau of Street and Sewer Repair with the Bureau of Building Repair
- Effective July 1, 2022, the sewer functions of the Bureau of Building and Street Repair were transferred to the San Francisco Public Utilities Commission

## Bureau of Building and Street Repair – Services Provided



- Street repairs and improvements
- Great Highway sand clearing
- Street-related special projects
- City facility maintenance, repair and improvements

# Bureau of Building and Street Repair – By the Numbers



**24/7**  
Operation



**BUDGET:**  
**\$52.1M**



**Employees:**  
**200 (FTE)**

## Bureau of Building and Street Repair – Block Paving



### Blocks identified by Public Works

- Fiscal Year 23/24 goal is 120 blocks – the blocks paved are selected by Public Works Infrastructure Design and Construction Division

### Two treatment types

- Full-width grind and pave, with 2 inches of asphalt
- Overlay – grind along gutter and overlay 1½ inches of asphalt

### Asphalt grindings recycled at Brisbane Recycling

## Bureau of Building and Street Repair – Pothole Repair



**Before**



**After**

### Repair small street defects

- Typically, 25 square feet or less

### Locations identified:

- 311 customer service center
- Field-initiated service orders
- Pothole Sweep Crew

### Goal:

- Address 90% of locations within 72 hours

# Bureau of Building and Street Repair – Patch Paving and Void/Depression Repairs





## Bureau of Building and Street Repair – Patch Paving and Void/Depression Repairs



Before

After

### Repair of larger pavement defects

- Typically, 25 square feet or more

### Voids/depressions

- Trench failures
- Lower sewer lateral issues
- Other utility service lateral issues

## Bureau of Building and Street Repair – Crack Sealing



Before



After

Performed in spring and fall months

- Uses a hot mixture of asphalt and polymers to seal existing pavement cracks to prevent the intrusion of water to protect the street structure

## Bureau of Building and Street Repair – SFMTA Traffic-Calming Methods



**SFMTA determines projects**

**Types of approaches**

- Speed cushions
- Speed humps
- Raised crosswalks

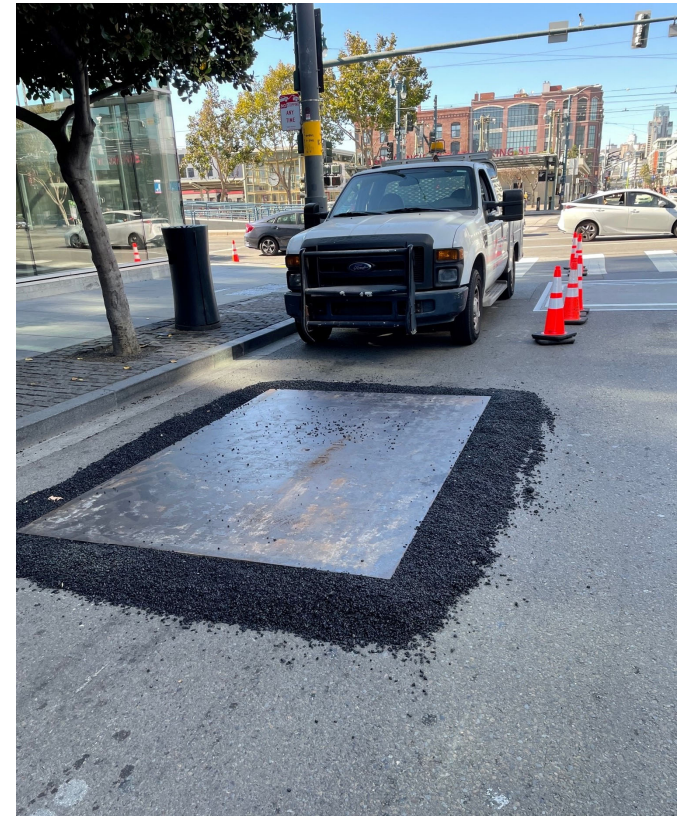
## Bureau of Building and Street Repair – After-Hours “Make Safe” Emergency Response



**24/7 response to pavement failures that pose potential safety hazards**

- Sewer main failures
- Utility service and sewer lateral concerns
- Contractor trench failures

## Bureau of Building and Street Repair – After-Hours “Make Safe” Emergency Response



## Bureau of Building and Street Repair – Asphalt Work for Curb Ramp Installations



Before



After

Locations are determined by Public Works' **Curb Ramp Program**, overseen by the Infrastructure Design and Construction Division

Bureau of Urban Forestry **Cement Shop** serves as lead on the projects

**Asphalt Shop** lays down fresh asphalt after curb ramp installations are completed

## Bureau of Building and Street Repair – Great Highway Sand Clearing



### Routine operations:

- Sand clearance from the roadway
- Sand clearance from the promenade

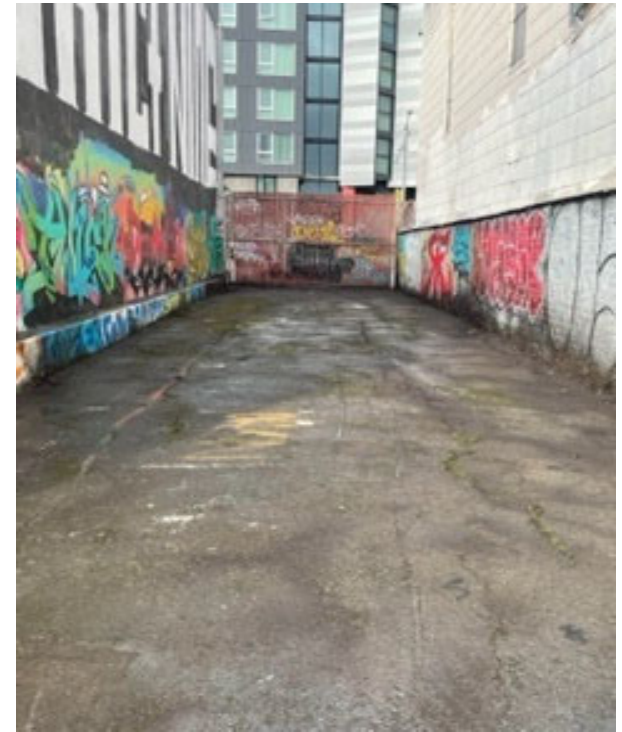
### Annual sand redistribution project

- Clear sand from the seawall
- Reshape sand dunes to minimize sand ending up on the roadway

## Bureau of Building and Street Repair – Illegal Dumping Cleanup



Before



After



# Bureau of Building and Street Repair – K-Rail Placement



Before



After

# Bureau of Building and Street Repair – Parking Lot Paving



City COVID testing and vaccination sites

## Bureau of Building and Street Repair – Removal of Illegal Skate Ramp Installations



# Bureau of Building and Street Repair – City Facilities: Maintenance, Repair and Improvements

## 12 Shops and Administration

Stationary Engineers	Roofing
Carpentry	Sheet Metal
Electrical	Soft Floor
Glazier	Steamfitter
Locksmith	Tile Setting
Plumbing	Painting

## Bureau of Building and Street Repair – City Facilities: Stationary Engineers



Conduct daily inspections of all major City plazas, bridges and tunnels



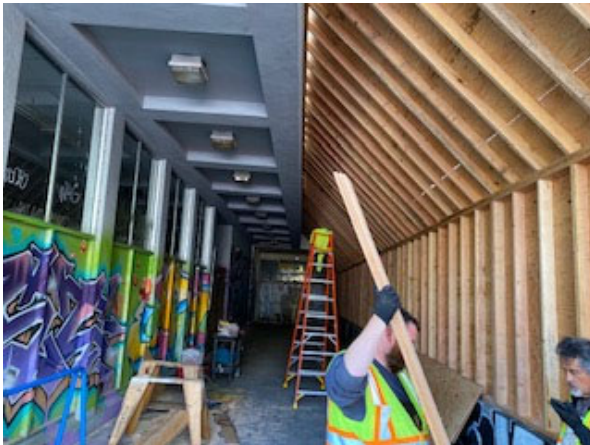
Operate the opening and closing of drawbridges

## Bureau of Building and Street Repair – City Facilities: Carpentry Shop



Provides remodel, repair and building renovation services to all City buildings

Manufactures exact replica replacements of City historical wood doors, moldings, trim and windows



Constructs wooden retaining walls

Provide 24-hour response as requested for emergencies

## Bureau of Building and Street Repair – City Facilities: Electrical Shop



Provides new installations, security upgrades, repairs and renovations to electrical equipment for all City agencies



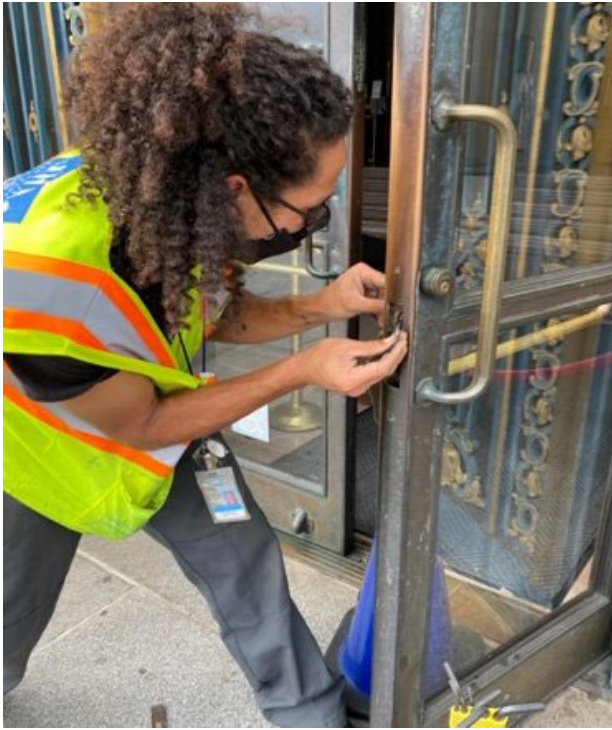
## Bureau of Building and Street Repair – City Facilities: Glazier Shop



Installs and repairs glass windows, doors, and mirrors, storefront and overhead glazing systems, partition glass walls and sneeze guards



## Bureau of Building and Street Repair – City Facilities: Locksmith Shop



Provides security services, including maintenance and new installations of various locking systems: high security, card reader, magnetic and master key

## Bureau of Building and Street Repair – City Facilities: Paint Shop



- Paints the interiors and exteriors of City buildings
- Abates graffiti on and around City buildings and inside tunnels
- Works on special projects, such as Chinatown dragon lights

## Bureau of Building and Street Repair – City Facilities: Roof Shop



- Maintain and repair roofing systems on city facilities
- Repair leaks during storm events

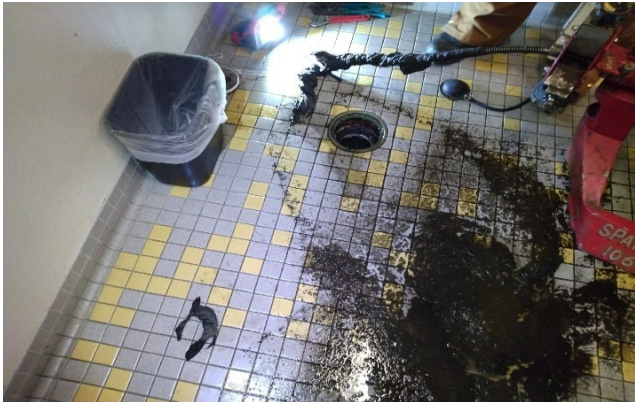
## Bureau of Building and Street Repair – City Facilities: Plumbing Shop



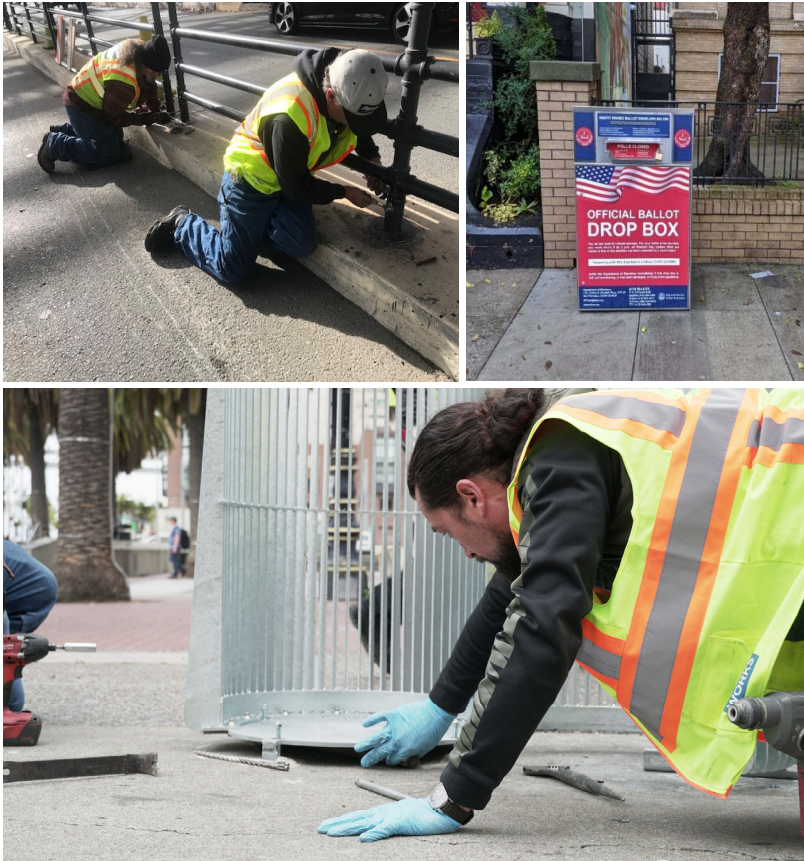
Installs new plumbing, water-heating systems and fixtures

Repairs, maintains and replaces building plumbing, gas, waste and water systems

On-call plumber for 24-hour response



## Bureau of Building and Street Repair – City Facilities: Sheet Metal Shop



- Installs and repairs HVAC systems and ventilation systems
- Installs new ducting
- Repairs bridge decks, guardrail and median rail
- Installs and repairs fences
- Installs and repairs metal trash cans and ballot drop-off boxes
- Installation of needle kiosks and dog waste bag dispenser stands

## Bureau of Building and Street Repair – City Facilities: Soft Floor Shop



Installs carpet squares, rolled carpet, linoleum and bio-based floor tiles

## Bureau of Building and Street Repair – City Facilities: Steamfitter Shop



Installs, maintains, inspects and certifies boilers, heating systems and HVAC systems for all City agencies



## Bureau of Building and Street Repair – City Facilities: Tile Shop



Provides tile installation, repair and renovation services for all City buildings and plazas





# QUESTIONS