



Month 00, 2022

Public Trash Cans

Christopher McDaniels
Superintendent, Street Environmental Services



Trash Cans Per Capita

San Francisco, with a population of ~810,000, has ~3,300 public trash cans



Public Trash Cans



- Public Works manages most trash cans in the right of way, including overseeing placements and removals
- Community Benefit Districts manage additional trash cans in certain neighborhoods
- Recology services all the cans as part of its rate agreement with the City

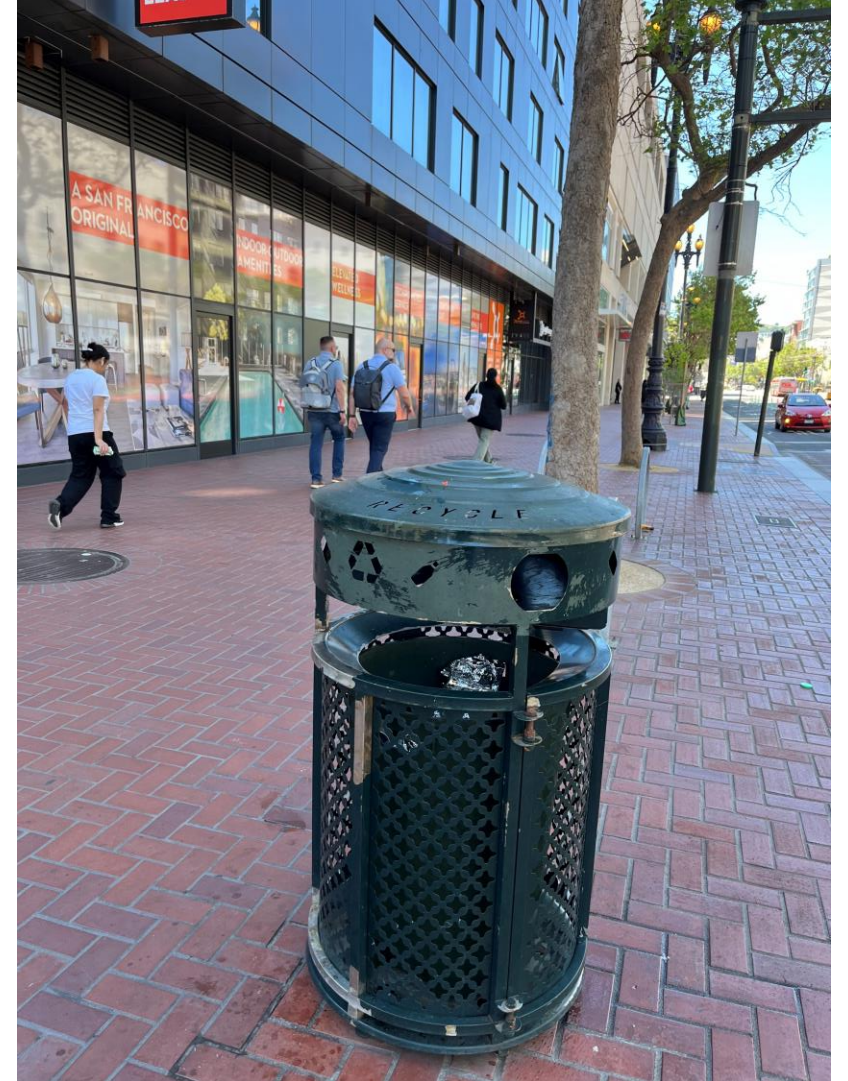
Requesting the Addition, Relocation or Removal of a Public Trash Can

- A member of the public may request the addition of a new trash can, or the relocation or removal of an existing trash can, by contacting the SF311 customer service center
- Constituent requests also are sent to Public Works through the district supervisors' offices
- Recology can request can removals and locations, as well, based on servicing concerns
- Once received, our Street Environmental Services team reviews the requests for feasibility
- If a can is added, moved or replaced, Public Works alerts Recology for adjusted servicing

address	Cross street	New	Remove	swap	Can Type	Requested by Sup/DW
1398 McAllister	Pierce St	x			concrete	DPW
1401 McAllister	Pierce St			x	concrete	DPW
2104 Market St	Church St			X	Concrete	DPW
800 Van Ness Ave	Eddy St		X		Renaissance	DPW
1001 Larkin St	Post St		X		Renaissance	DPW
2000 Irving St	21st Ave			X	Concrete	DPW
100 Powell St	Ellis St		X		Renaissance	DPW
2241 Chestnut St			X		PEL	DPW
2095 Chestnut St			X		PEL	DPW
2200 Bayshore Blvd	Arleta Ave		X		Renaissance	DPW
5 King St			X		Renaissance	DPW (ZD 282444)
1611 Clay St		X			Concrete	Recology SUP
3287 24th St			X			Recology SUP
3307 24th St			X			Recology SUP
3311 24th St			X			Recology SUP
2806 Mission St			X			Recology SUP
2787 Mission St			X			Recology SUP
2300 Polk St		X			Renaissance	Recology SUP
4201 18th St			X		Concrete	Recology SUP
501 Green St		X			Renaissance	DPW (ZD 282617)
499 Union St		X			Renaissance	DPW (ZD 282617)
4292 24th St	Bank St			X	Concrete	DPW (ZD 282885)
2685 Taylor St	Beach			X	Concrete	DPW (ZD 282885)
3 Clementina St	3rd St		X		Renaissance	DPW (ZD 282885)
1302 Columbus Ave	Leavenworth			X	Renaissance	DPW (ZD 284052)
899 Divisadero St	McAllister			X	Renaissance	DPW (ZD 284052)
4400 Mission St	Colter		X		Renaissance	DPW (ZD 284052)

Trash Can Placement: Preferred Locations

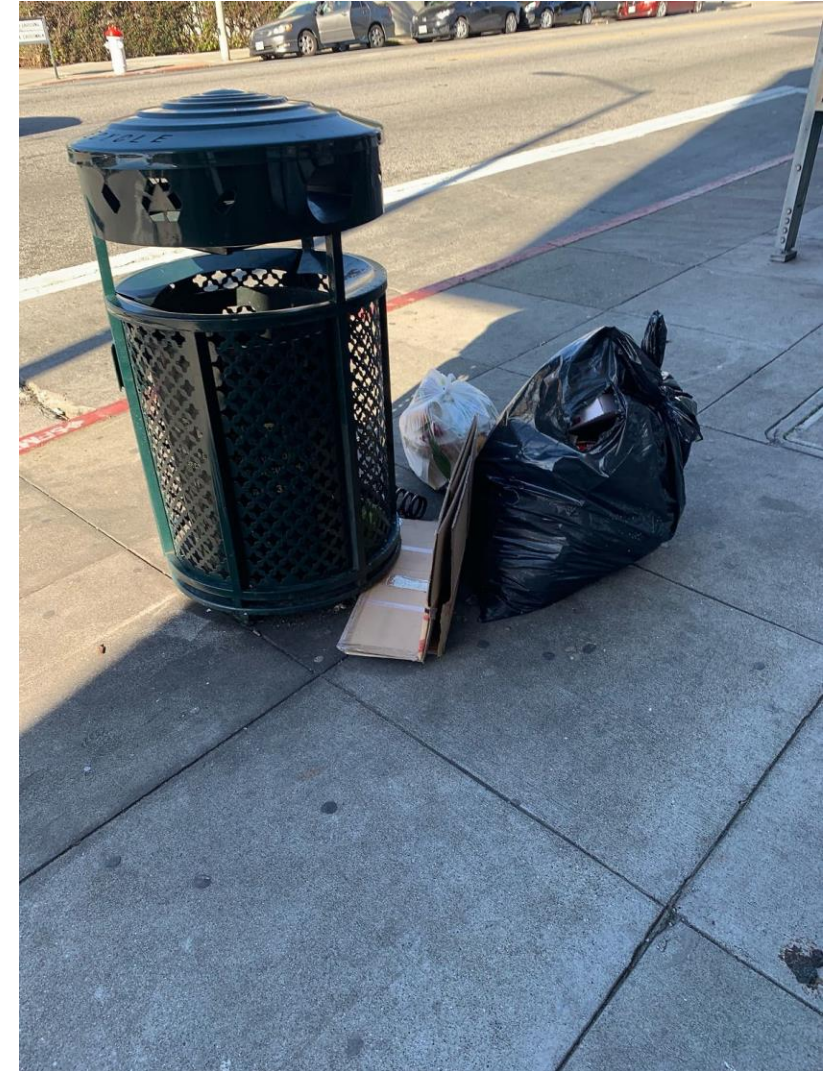
- Muni bus stops and other public transit hubs
- Schools
- Hospitals
- Business corridors
- City buildings
- High-volume pedestrian corridors
- Significant amount of material and/or litter in vicinity
- Public requests and/or observation from Public Works and/or Recology staff
- Libraries
- No other can nearby



Trash Can Removal Criteria: Illegal Dumping

When there's illegal dumping around a public trash can:

- **Assess 311 data to track trends**
- **Dispatch the Outreach and Enforcement (OnE) Team to investigate source**
 - Staff combs through the trash looking for any identifiers, such as shipping labels, bills, types of trash that can be tied to a nearby business
 - Illegal dumpers face \$1,000 fines
 - Proactive outreach to businesses on commercial corridors
 - Audits checking for sufficient garbage service in known dumping hot spots
- **If problems persist, consider removing trash can**



Trash Can Removal Criteria: Other Factors

- The can is regularly vandalized
- The can impedes the accessible path of travel, conflicts with a curb ramp or is located too close (within 5 feet) of a fire hydrant



Public Complaints Related to Overflowing Cans

Contributing Factors:

- **Illegal dumping**
- **Rummaging by scavengers**
- **Missed pickups**
- **Higher-than-anticipated use**
 - In these cases, we assess whether additional cans are warranted in the area

Monthly 311 service requests for overflowing cans average 1,665

Trash Can Sensors Pilot

- Nearly one third of the public trash cans are outfitted with sensors
- Sensors track fullness and fill rates in real time to identify patterns of use
- Sensors feed information into 311 system, which alerts Recology when a can is nearing capacity and needs to be emptied
- Auto-generated 311 requests are tracked to monitor response times
- Goal is to mitigate container overflow, schedule servicing based on actual use, optimize operations and improve efficiency



Trash Can Placement and Removal: Not a Magic Wand-Operation





QUESTIONS?