



Meeting Date: 12/2/2022

To: Public Works Commission
Lauren Post, Chair
Fady Zoubi, Vice Chair
Lynne Newhouse Segal
Paul Woolford

Through: Carla Short, Interim Public Works Director
Albert Ko, City Engineer and Deputy Director for Infrastructure

From: Iqbal Dhapa, Acting Bureau Manager

Subject: Overview of Infrastructure Design and Construction Division's Bureau of Engineering

Director's Recommendation: Receive and Discuss informational presentation

Executive Summary: Overview of the Bureau of Engineering including work performed by the Bureau's various Sections and examples of key completed and ongoing projects.

Attachments:

- Attachment 1: PowerPoint Presentation



December 2, 2022
Infrastructure Design & Construction (IDC)

Bureau of Engineering

Iqbal Dhapa, Acting Manager
Public Works Commission Meeting



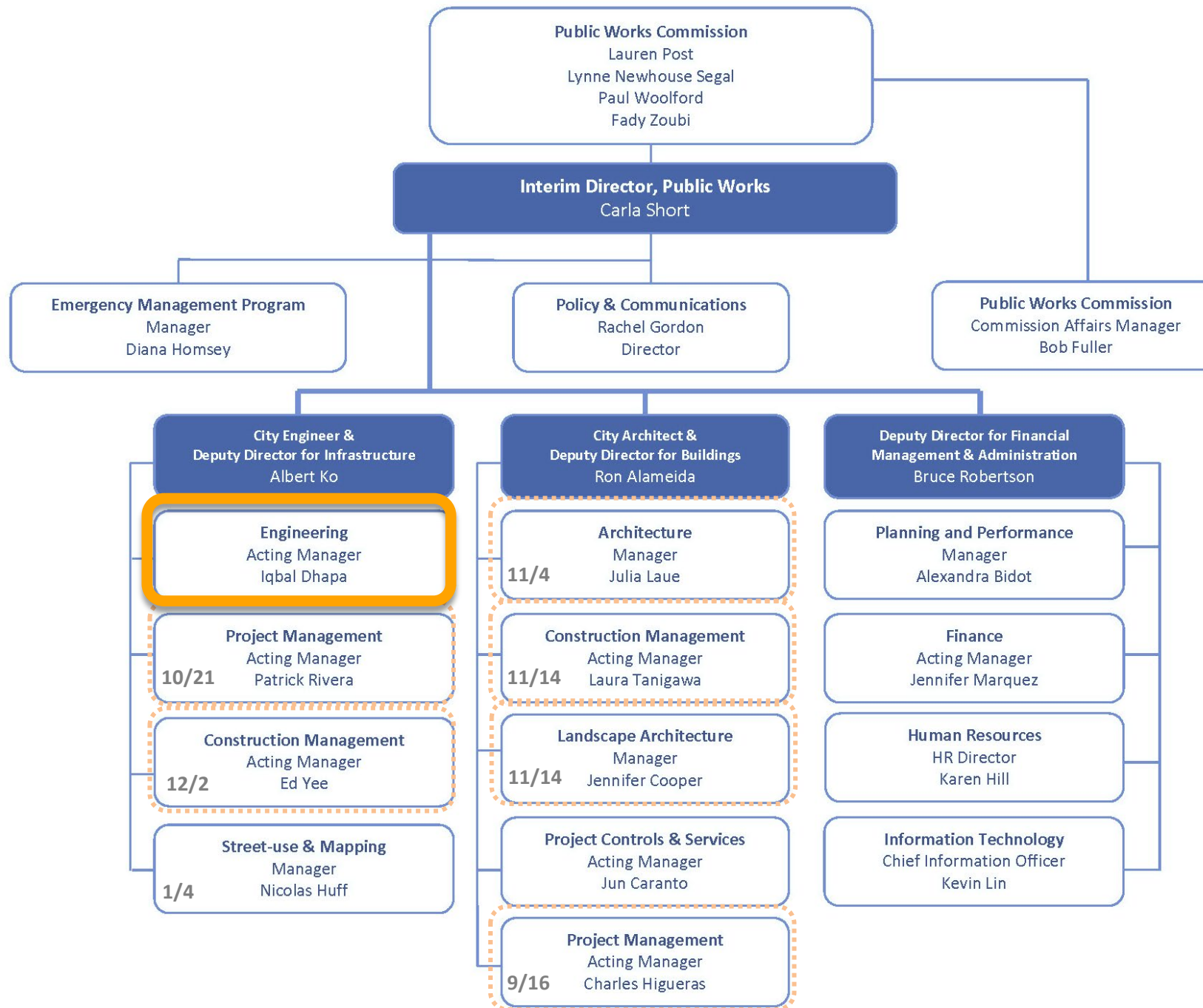
Bureau of Engineering

Brief History

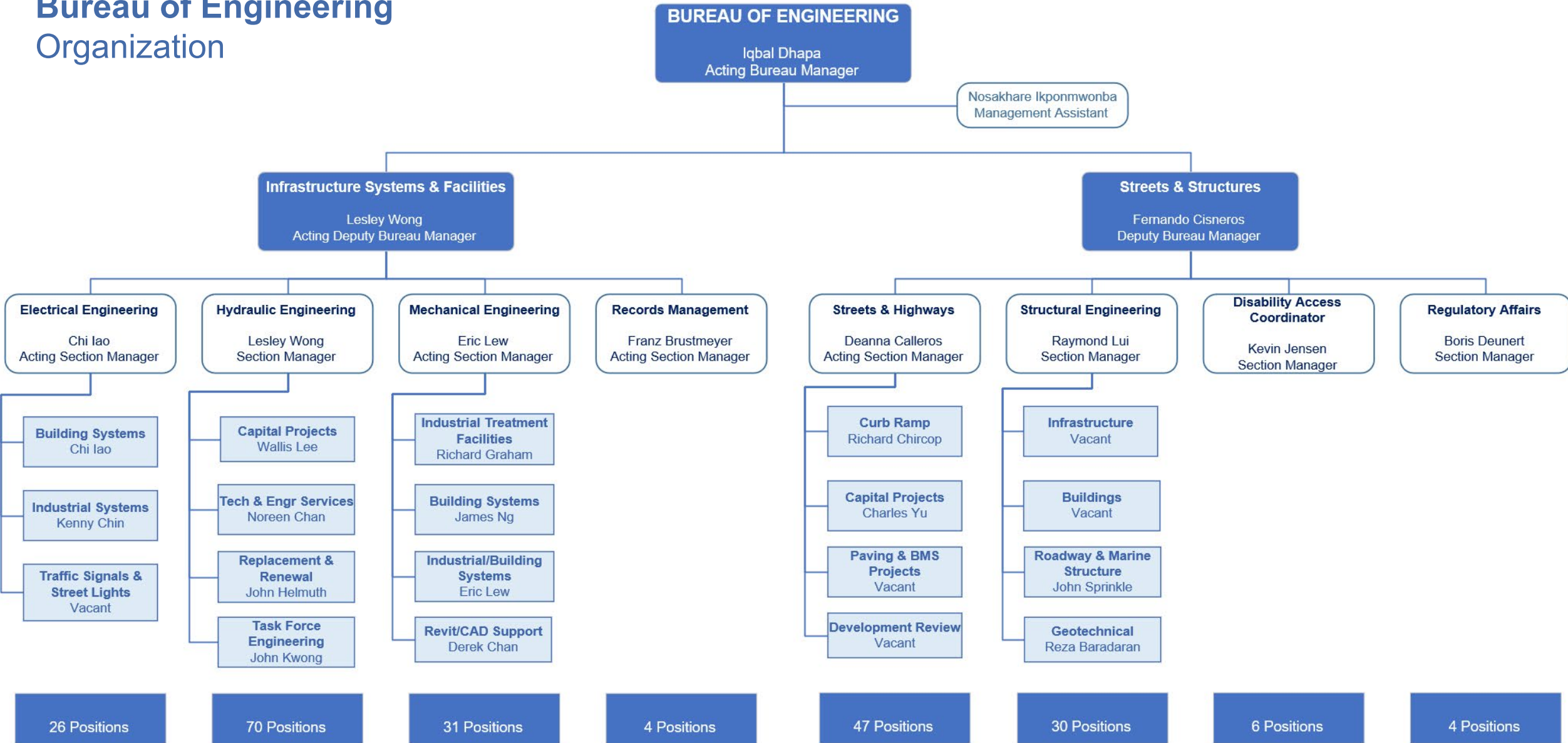


- The Bureau of Engineering (BOE) was one of the four original bureaus created under the Board of Public Works (now San Francisco Public Works) on **January 8, 1900**.
- BOE's first task was to organize and regulate street construction and paving projects throughout the City.
- **Examples of past significant projects:**
 - Market Street and The Embarcadero
 - Octavia Boulevard
 - Lombard: Crookedest Street in the World
 - Great Highway
 - Broadway Tunnel
 - Twin Peaks Tunnel for Muni streetcars
 - Islais Creek Transport Storage Box Sewers

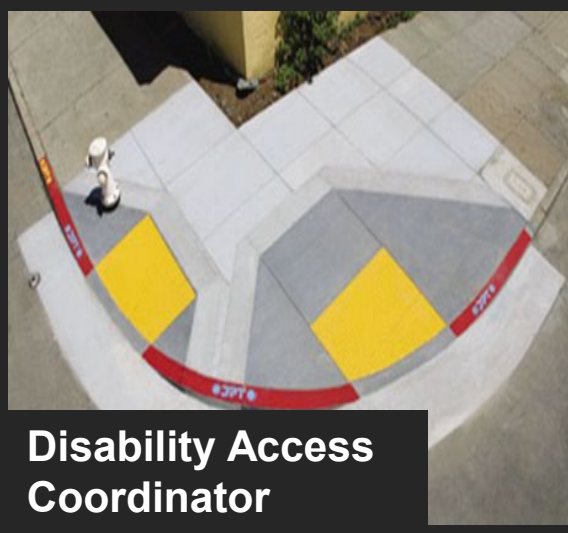
Public Works Organization



Bureau of Engineering Organization



Bureau of Engineering Sections



Bureau of Engineering Electrical Section



**Alameda Creek Watershed Center
In Sunol, Alameda County**



**Victoria Manalo Draves Park
16 Sherman St. In SoMa**



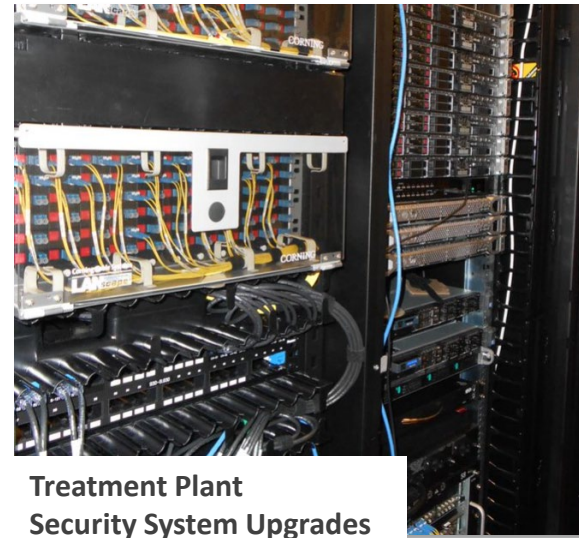
**Bruce Flynn Pump Station
at Evans Ave. and Rankin St.**



**Oceanside Treatment Plant
Flare Control Replacement**



**Groundwater Supply Pump Station
In Golden Gate Park**



**Treatment Plant
Security System Upgrades**



Traffic Signals



**Chemical System
Relocation & Facility Upgrade**

Bureau of Engineering Hydraulics Section



Bureau of Engineering Mechanical Section



Southeast Plant Primary & Secondary Clarifier Upgrade



**North Lake Well Station
In Golden Gate Park**



**Southeast Health Center
@ 2403 Keith St.**



**Southeast Plant Building 040
Reliability Upgrade**



Treasure Island Fireboat Manifold



**Mariposa Pump Station
@ Mariposa & Illinois**



**Margaret Hayward Playground
@ 1016 Laguna St.**



**Archimedes Screw Pump
& Mechanical Upgrades**

Bureau of Engineering

Streets and Highways Section: Street Resurfacing and Street Reconstruction



Street Resurfacing Program



Street Reconstruction

Bureau of Engineering

Streets and Highways Section: Streetscapes and Curb Ramps

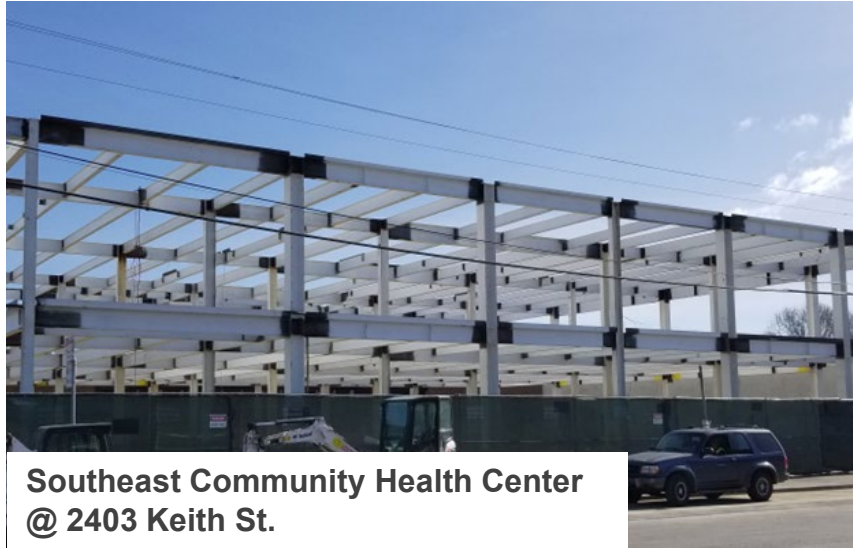


Masonic Streetscape



Curb Ramp Program

Bureau of Engineering Structural Section



**Southeast Community Health Center
@ 2403 Keith St.**



**Mariposa Pump Station
@ Mariposa & Illinois**



**Monument Way Staircase
@ Monument Way near Clayton & 17th**

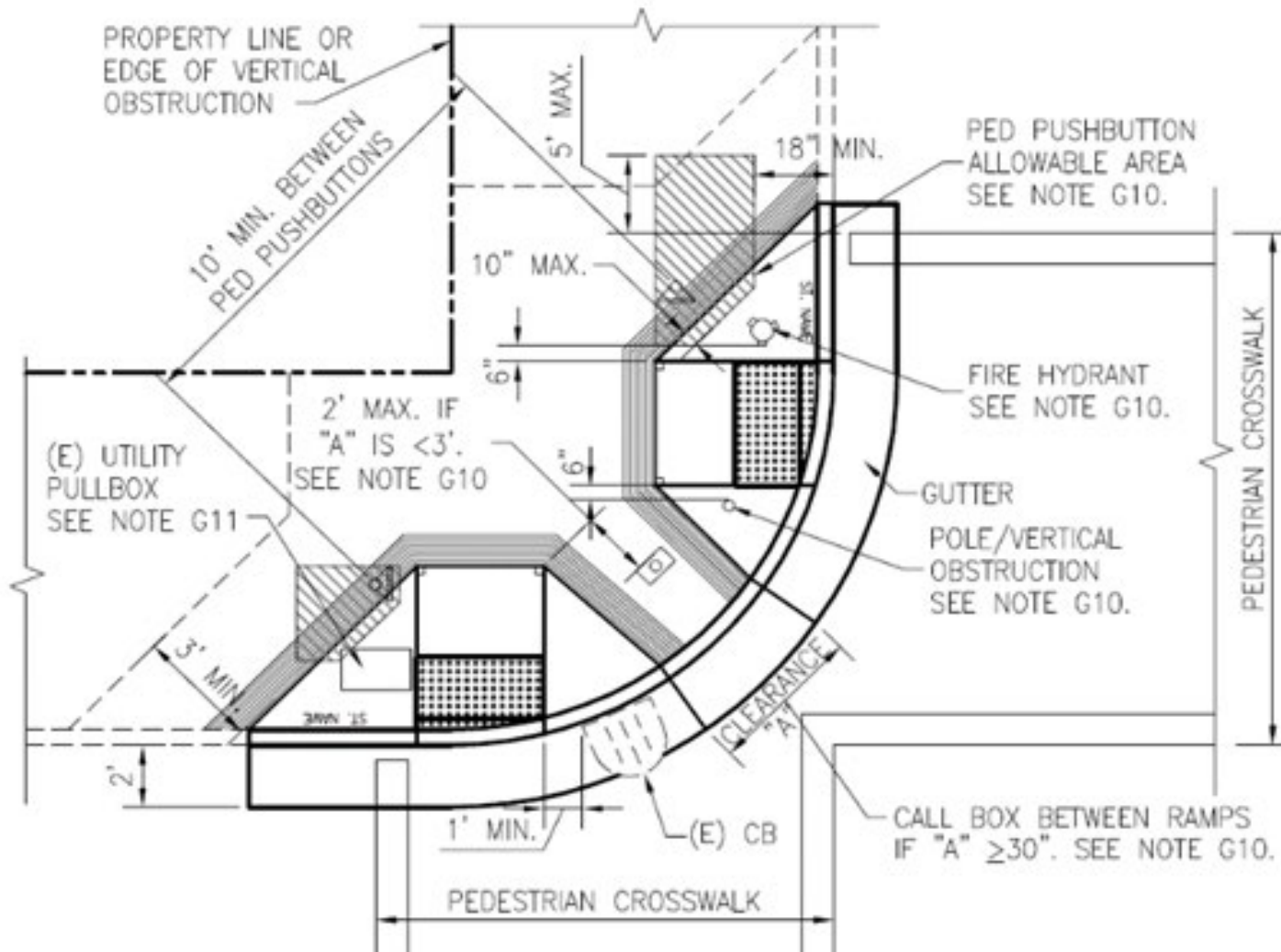


**Richland Avenue Railing Replacement
@ Richland Avenue, above San Jose Avenue**



**Steiner Street Bridge Demolition
@ Steiner and Geary**

Bureau of Engineering Disability Access Coordinator's Section



Bureau of Engineering Regulatory Affairs Section



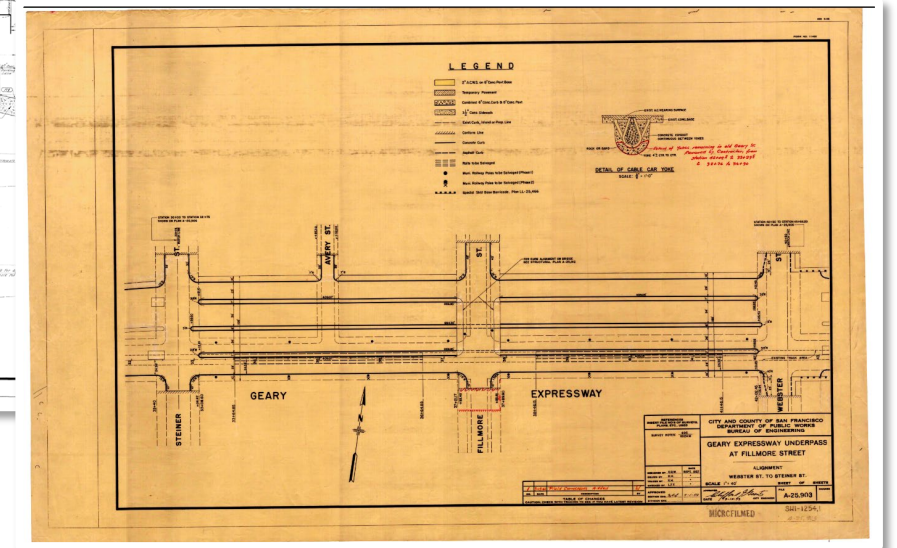
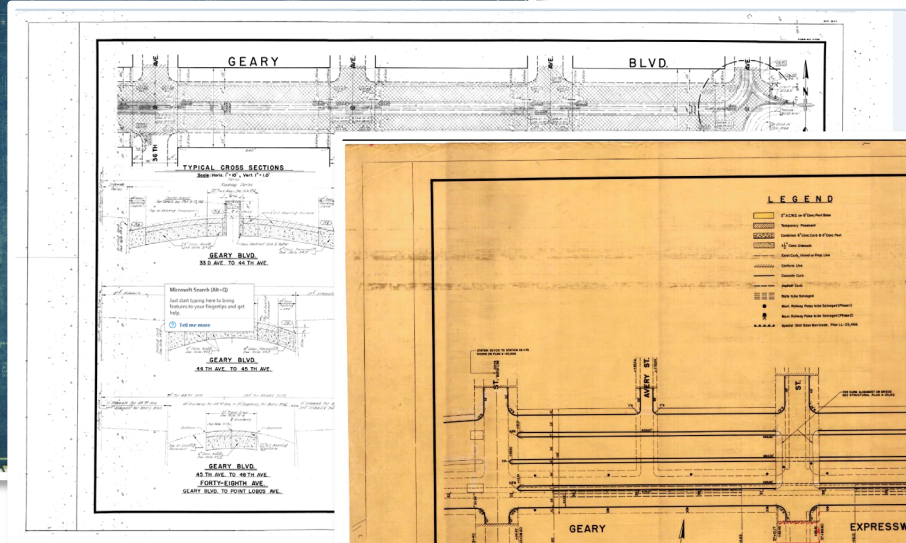
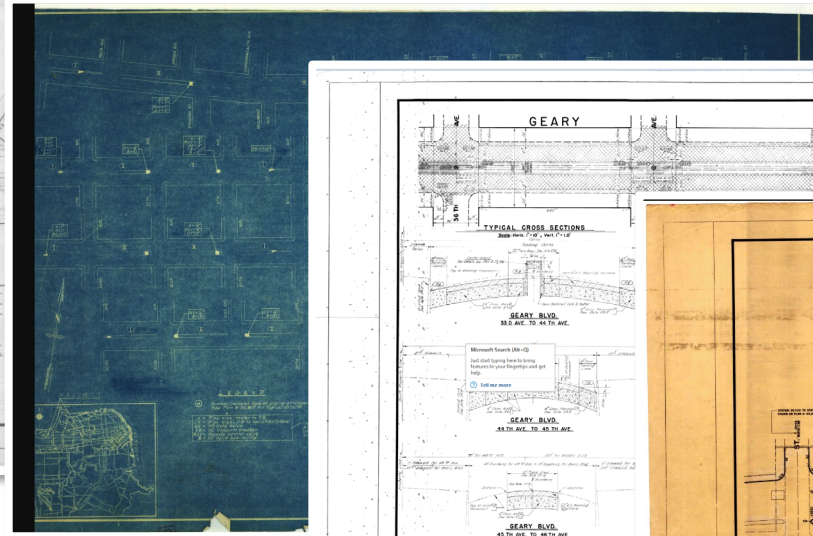
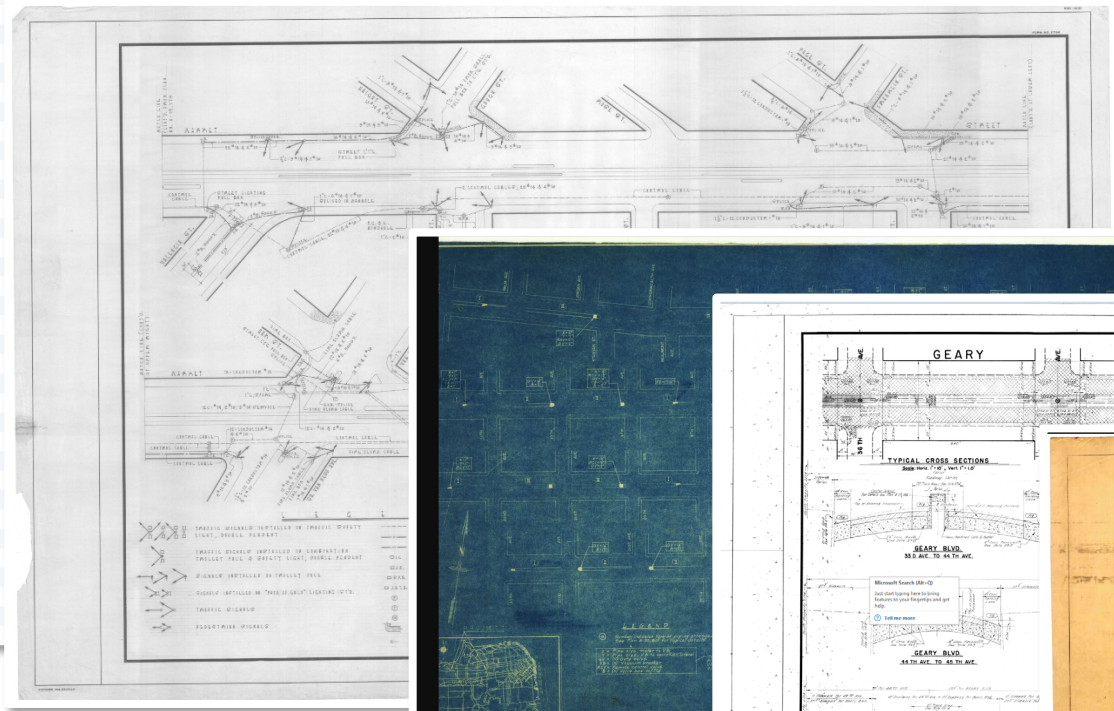
Treasure Island

Bureau of Engineering Records Management Section

ABV WildcardSearch Example

Q: All Fields Search

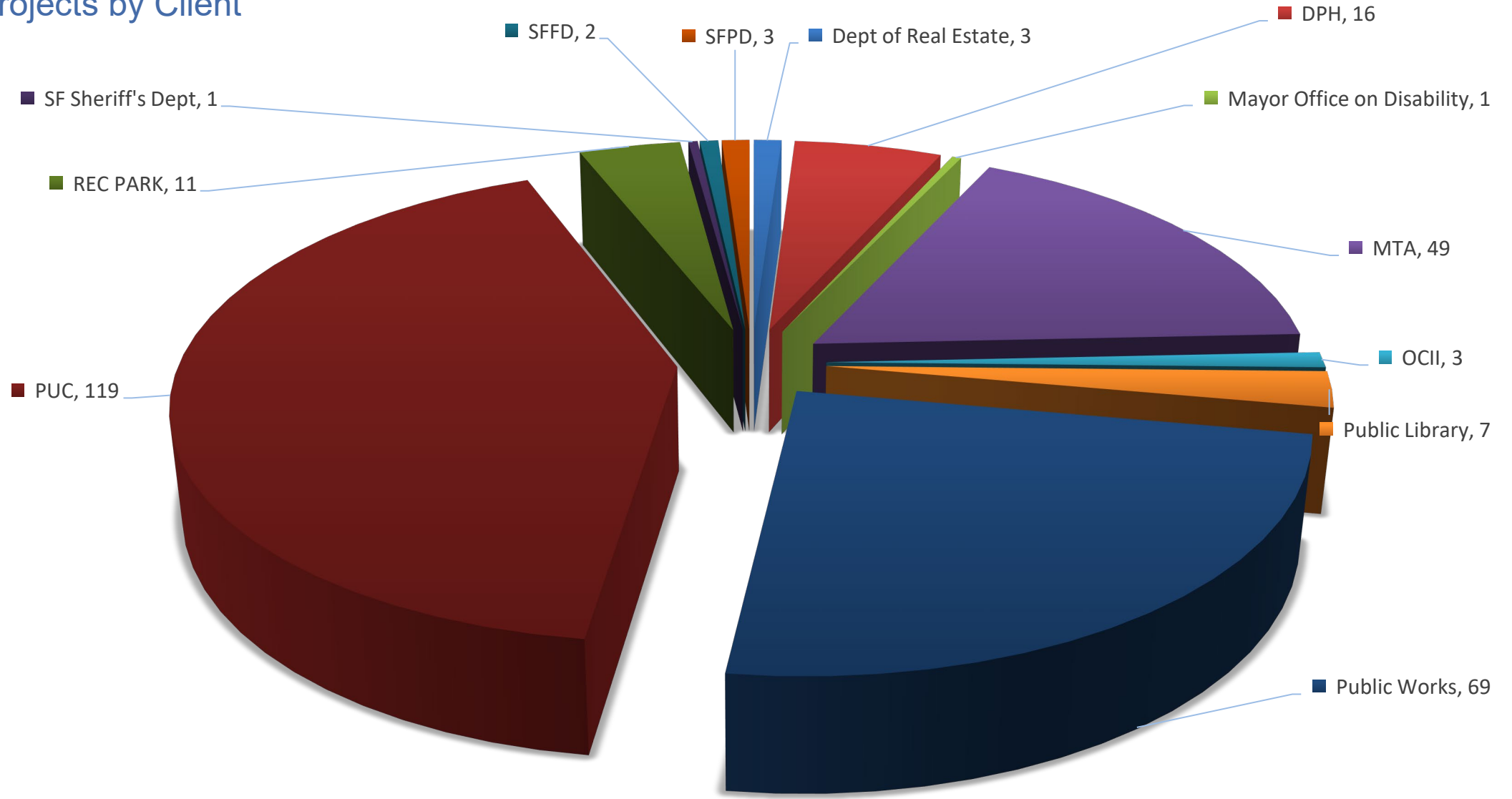
File	Size	Create Date	Write Date
B-36473.JPG	29,187,357	2021-08-25	2021-08-25
B-36473.1.JPG	28,010,142	2022-09-19	2022-09-19
B-36474.JPG	29,747,064	2021-08-25	2021-08-25



Bureau of Engineering Programs & Sponsoring Agencies:



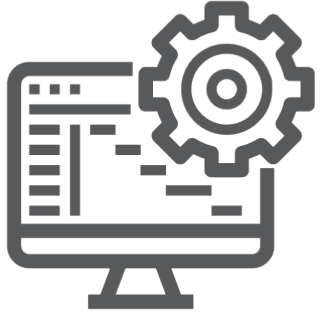
Bureau of Engineering Active Projects by Client



Note: Infrastructure Task Force (Development) Projects and Projects under closeout are excluded

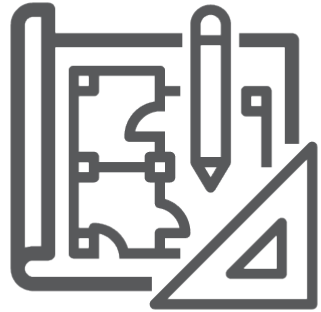
Engineering Role

Active Projects by Phase



21

In Planning



102

In Design



44

In Bid & Award



115

In Construction



4

In Close Out
(Maintenance)



Thank you!