

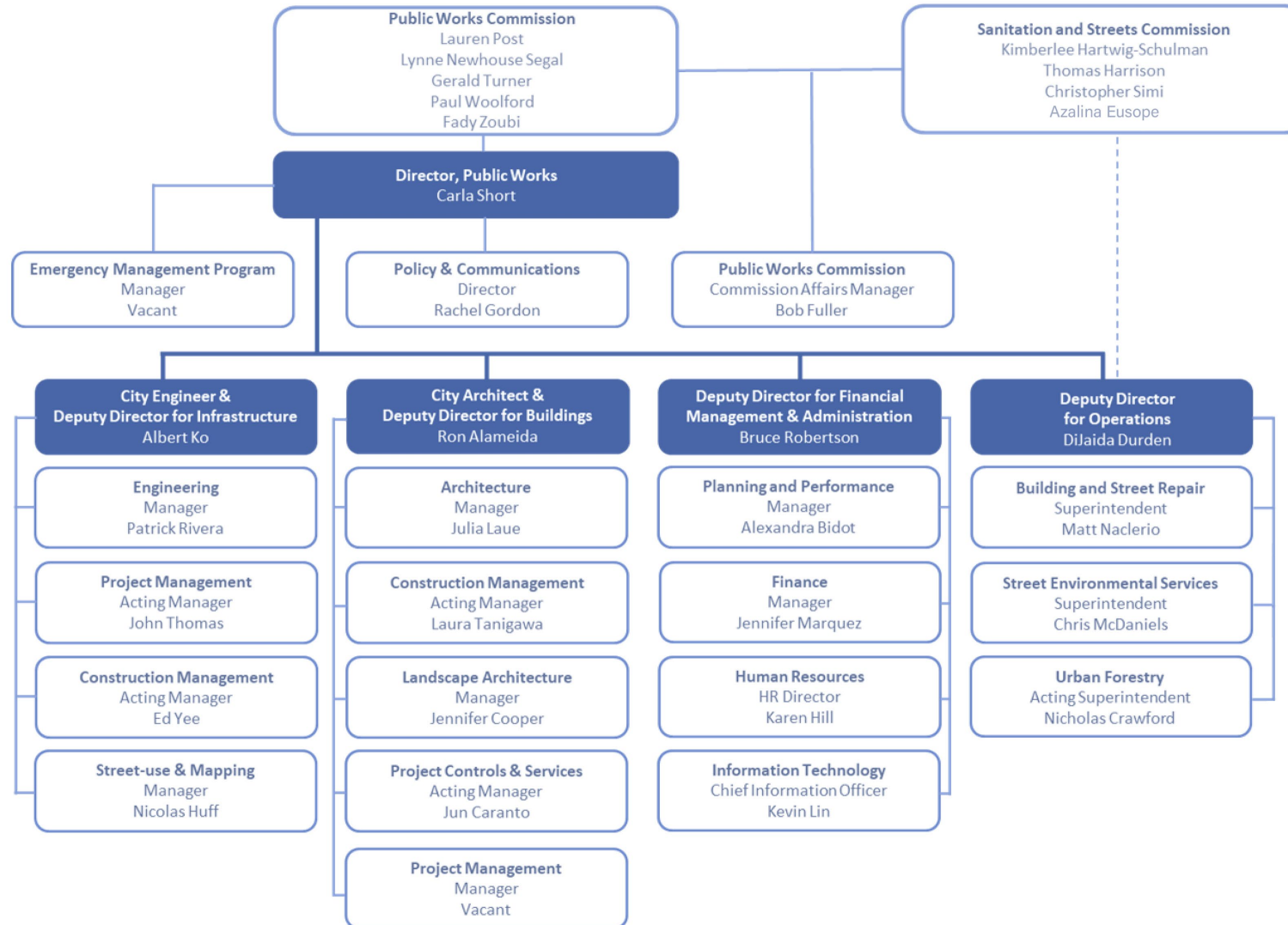
PUBLIC WORKS DIVISION OVERVIEW

FY 2024-25

RON ALAMEDIA, CITY ARCHITECT, FEBRUARY 12, 2024



ORGANIZATION



Total Number
of Employees
1,800

BUILDING DESIGN AND CONSTRUCTION

ARCHITECTURE

CONSTRUCTION MANAGEMENT

LANDSCAPE ARCHITECTURE

PROJECT MANAGEMENT

PROJECT CONTROLS AND SERVICES



SAN FRANCISCO

PUBLIC

WORKS



SAN FRANCISCO

PUBLIC

WORKS

BUILDING DESIGN AND CONSTRUCTION



Provides comprehensive planning, project management, architecture, building construction management, contract support and compliance monitoring, hazardous materials investigation and abatement, materials testing, quality assurance and control services for the development of new buildings and the modernization of existing buildings, facilities and public urban landscapes, including parks and plazas.

ARCHITECTURE



Provides programming, architectural design, site and master planning, conceptual design and construction support services. The bureau's architects work closely with sponsor City departments and community groups to create architecture within the urban context that reflects the uniqueness of San Francisco neighborhoods.

CONSTRUCTION MANAGEMENT



Implements project plans overseen by the Project Management, Architecture and Landscape Architecture bureaus. This group of technical staff safeguards the construction and delivery of capital projects and ensures compliance with the project design. Construction Management staff review the materials used in construction, oversee environmental services and enforce all construction and building codes.

LANDSCAPE ARCHITECTURE



Provides design services and oversees the designs into construction, including renovation and new construction. Landscape architecture projects include streetscapes, plazas, green infrastructure and stormwater management, parks and recreation projects and the design of any outdoor spaces associated with public building projects throughout San Francisco.

PROJECT MANAGEMENT

Delivers major building capital projects from planning, design and regulatory approval through construction.

The bureau delivers a variety of major building projects on behalf of City agencies and oversees major standalone capital building projects, as well as overarching programs related to emergency services and public safety. Project Management oversees many of the City's capital bond programs, including the Earthquake Safety and Emergency Response (ESER) Bond.



PROJECT CONTROLS AND SERVICES



Provides specialized services, such as materials testing, contract preparation, site remediation and contract management, with a focus on buildings, infrastructure, institutional and transportation projects.

MEASUREMENTS

- **Volume of active capital projects by phase, service type and size**
- **Capital projects by client department**
- **Estimated project budget of capital project portfolio**
- **Project schedule**
- **Volume and timeliness of projects completing design and construction (substantial completion)**
- **Projects in construction closeout**
- **Time of projects to complete construction closeout**
- **Change orders by change type, dollar amount and time**

ACCOMPLISHMENTS

- **Japantown Peace Plaza Project design, permitting and bidding completed**
- **Mission Library renovation started construction and well underway**
- **Ushered through “emergency declaration” and started construction on must-do, emergency declaration-driven projects at Laguna Honda Hospital to meet accreditation requirements**
- **Achieved project closeout on multiple projects, including Animal Care & Control renovation project that yielded \$7.9 million in savings – representing more than 10% of the \$76.4 million budget**
- **Southeast Community Center won four design and construction industry awards**
- **Advanced the tiny cabins project in the Mission District**

CHALLENGES

- **Filling multiple vacancies while still providing the highest levels of service to our sponsor agencies and the public**
- **Meeting staffing needs with recent and upcoming retirements during increase of project demands**
- **Advancing projects while sponsor agency representation is impacted by their own staffing deficiencies**
- **Maintaining project momentum while securing necessary funding for project demands, especially for all emergency declaration-related Laguna Honda Hospital projects for coordinated construction**
- **Finalizing negotiations with multiple sponsoring agencies on MOUs, jurisdictional responsibilities and authorities**

Questions



sfpublicworks.org