

**Meeting Date:** 1/23/2023

**To:** Sanitation and Streets Commission  
Maryo Mogannam, Chair  
Ike Kwon, Vice Chair  
Thomas Harrison  
Kimberlee Hartwig-Schulman  
Christopher Simi

**Through:** Carla Short, Interim Public Works Director  
DiJaida Durden, Deputy Director for Operations

**From:** Matthew T. Naclerio, Superintendent of Bureau of Building and Street Repair

**Copy:** Alexandra Bidot, Planning and Performance Manager

**Subject:** Informational Overview of Bureau of Building and Street Repair

---

**Director's Recommendation:** Receive and discuss informational presentation

**Executive Summary:** The Bureau of Building and Street Repair (BSR) is a newly established bureau. It combines the Bureau of Street and Sewer Repair (BSSR) with the Bureau of Building Repair (BBR) after the sewer and brick functions of BSSR were transferred to SF Public Utilities Commission in July 2022. The services provided by BSR include street repairs and improvements, sand clearing of the Great Highway and the Noriega Seawall promenade, and the maintenance, repair and improvements of city facilities. The bureau responds to emergency service requests 24/7 and has a budget of \$52.1 million and an existing staff of 200 full time employees, excluding existing vacancies.

Street repairs work includes:

- Block Paving
- Pothole Repair
- Patch Paving, including voids/depressions
- Crack Sealing
- Installation of MTA Traffic Calming Devices
- Asphalt Conforms for Curb Ramp Installations

Facility maintenance, repairs, and improvements are accomplished through 12 trade shops including carpentry, electrical, flooring, glass, locksmith, plumbing, roofing, sheet metal, steamfitter, tile setting, and paint. The stationary engineering shop conducts daily inspections of all major city plazas, bridges and tunnels, and operates the opening and closing of drawbridges in accordance with federal regulations.

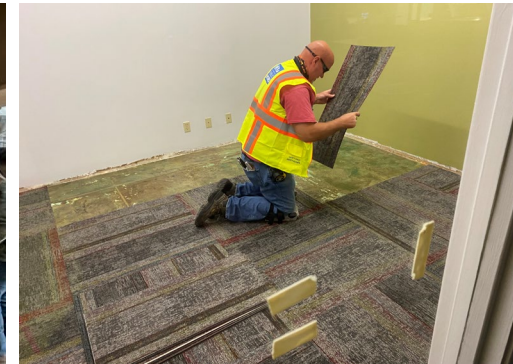
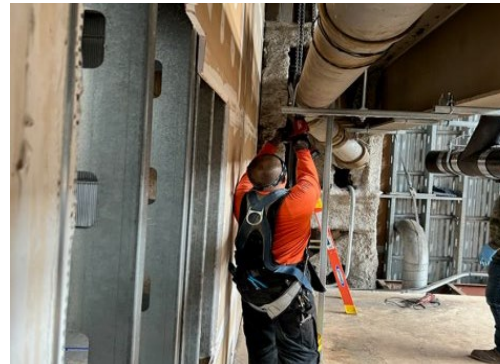
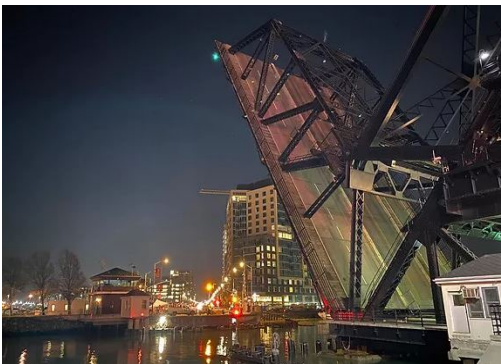
**Attachments:**

Attachment 1: PowerPoint Presentation



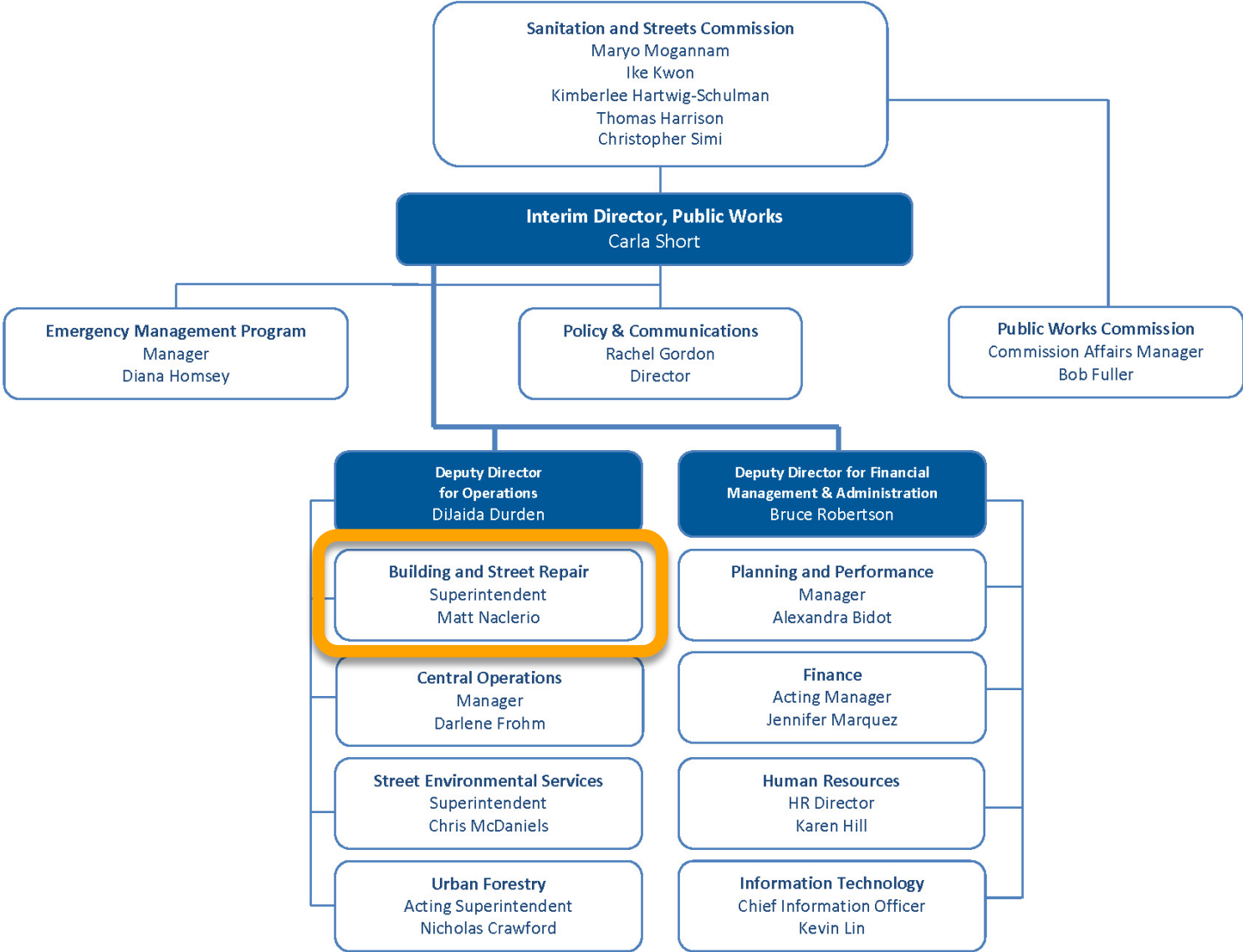
# Bureau of Building and Street Repair Overview

Matt T. Naclerio, Superintendent, Bureau of Building and Street Repair  
Sanitation & Streets Commission Meeting – January 23, 2023



# BUREAU OF BUILDING AND STREET REPAIR

## Where We Fit



# BUREAU OF BUILDING AND STREET REPAIR

## Origin Story



- The Bureau of Building and Street Repair is a newly established bureau
- Combines the Bureau of Street and Sewer Repair with the Bureau of Building Repair
- Effective July 1, 2022, the sewer functions of the Bureau of Building and Street Repair were transferred to the SF Public Utilities Commission

# BUREAU OF BUILDING AND STREET REPAIR

## Services Provided



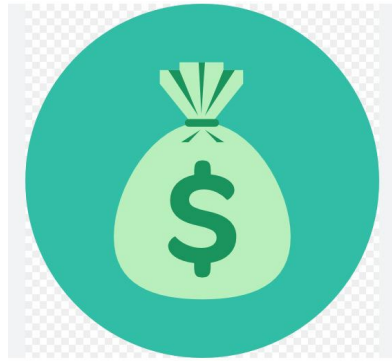
- Street repairs and improvements
- Great Highway sand clearing
- Street-related special projects
- City facility maintenance, repair and improvements

# BUREAU OF BUILDING AND STREET REPAIR

## By the Numbers



**24/7**  
Operation



**BUDGET:**  
**\$52.1M**



**Employees:**  
**200 (FTE)**

# BUREAU OF BUILDING AND STREET REPAIR

## Block Paving



### Blocks Identified by Public Works

- Fiscal Year goal is 120 blocks; previous year was 100 blocks

### Two treatment types

- Full-width grind and pave, with 2 Inches of asphalt
- Overlay – grind along gutter and overlay 2 Inches of asphalt

### Asphalt grindings recycled at Brisbane Recycling



# BUREAU OF BUILDING AND STREET REPAIR

## Pothole Repair



**Before**



**After**

### Repair Small Street Defects

- Typically, 25 square feet or less

### Locations Identified:

- 311 customer service center
- Field-initiated service orders
- Pothole Sweep Crew

### Goal:

- Address 90% of locations within 72 hours

# BUREAU OF BUILDING AND STREET REPAIR

## Patch Paving and Void/Depression Repairs



Before

After

### Repair of larger pavement defects

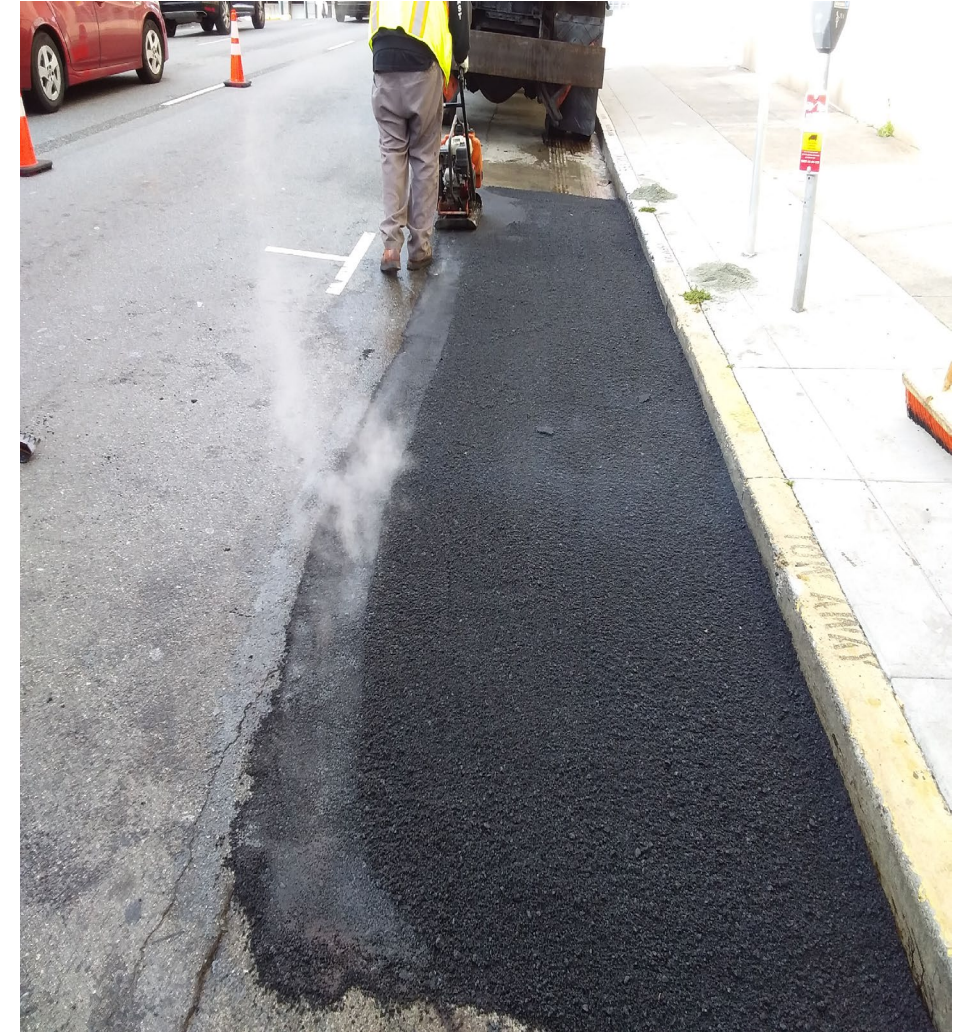
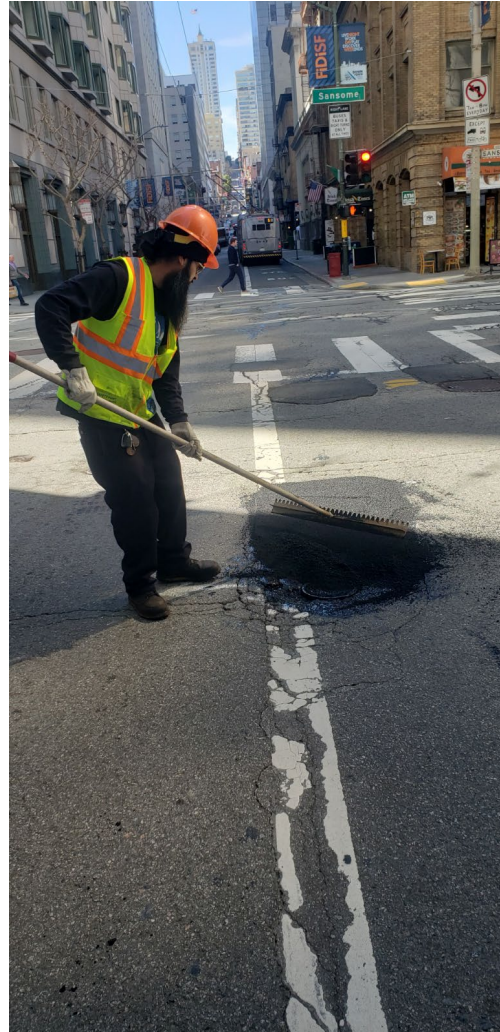
- Typically, 25 square feet or more

### Voids/depressions

- Trench failures
- Lower sewer lateral issues
- Other utility service lateral issues

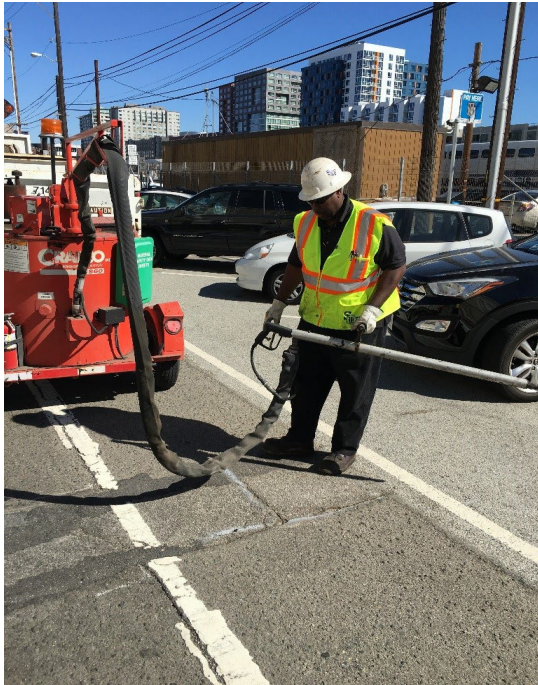
# BUREAU OF BUILDING AND STREET REPAIR

## Patch Paving and Void/Depression Repairs



# BUREAU OF BUILDING AND STREET REPAIR

## Crack Sealing



Before



After

### Performed in spring and fall months

- Uses an asphalt emulsion to seal existing pavement cracks to prevent the intrusion of water to protect the street structure



## SFMTA determines projects

### Types of approaches

- Speed cushions
- Speed humps
- Raised crosswalks

# BUREAU OF BUILDING AND STREET REPAIR

## After-Hours “Make Safe” Emergency Response



### 24/7 response to pavement failures that pose potential safety hazards

- Sewer main failures
- Utility service and sewer lateral concerns
- Contractor trench failures



# BUREAU OF BUILDING AND STREET REPAIR

## After-hours "Make Safe" Emergency Response



# BUREAU OF BUILDING AND STREET REPAIR

## Asphalt Work for Curb Ramp Installations



Before



After

Locations are determined by Public Works' **Curb Ramp Program**, overseen by the Infrastructure Design and Construction Division

Bureau of Urban Forestry **Cement Shop** serves as lead on the projects

**Asphalt Shop** lays down fresh asphalt after curb ramp installations are completed



# BUREAU OF BUILDING AND STREET REPAIR

## Great Highway Sand Clearing



### Routine Operations:

- Sand clearance from the roadway
- Sand clearance from the promenade

### Annual Sand Redistribution Project

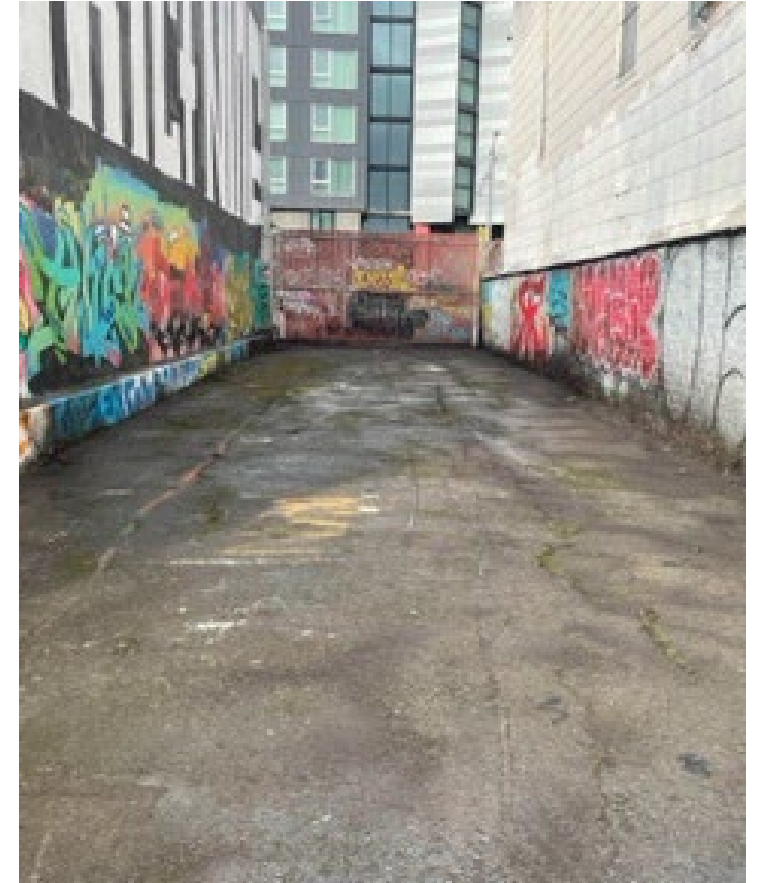
- Clear sand from the seawall
- Reshape sand dunes to minimize sand ending up on the roadway

# BUREAU OF BUILDING AND STREET REPAIR

## Illegal Dumping Cleanup



Before



After

# BUREAU OF BUILDING AND STREET REPAIR

## K-Rail Placement



Before



After

# BUREAU OF BUILDING AND STREET REPAIR

## Parking Lot Paving



City COVID testing and vaccination sites

# BUREAU OF BUILDING AND STREET REPAIR

## Removal of Illegal Skate Ramp Installations



## 12 Shops and Administration

Stationary Engineers	Roofing
Carpentry	Sheet Metal
Electrical	Soft Floor
Glazier	Steamfitter
Locksmith	Tile Setting
Plumbing	Painting

# BUREAU OF BUILDING AND STREET REPAIR

## City Facilities: Stationary Engineers



Conduct daily inspections of all major City plazas, bridges and tunnels



Operate the opening and closing of drawbridges

# BUREAU OF BUILDING AND STREET REPAIR

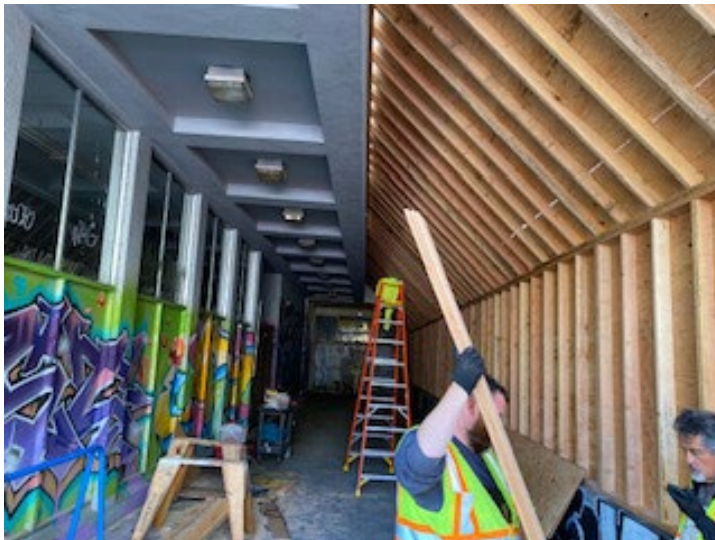
## City Facilities: Carpentry Shop



Provides remodel, repair and building renovation services to all City buildings

Manufactures exact replica replacements of City historical wood doors, moldings, trim and windows

Constructs wooden retaining walls





# BUREAU OF BUILDING AND STREET REPAIR

## City Facilities: Electrical Shop



Provides new installations, security upgrades, repairs and renovations to electrical equipment for all City agencies



# BUREAU OF BILDING AND STREET REPAIR

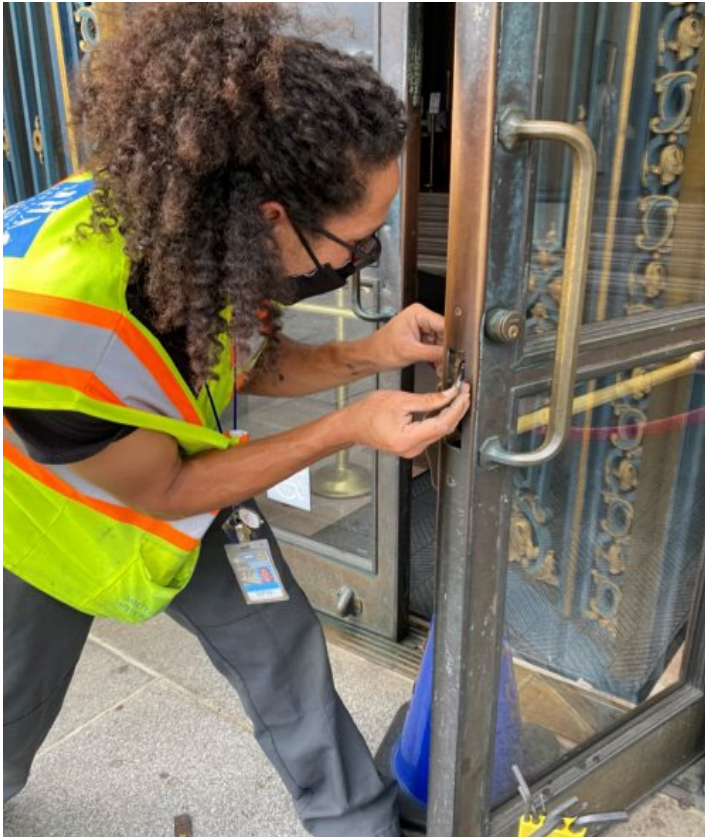
## City Facilities: Glazier Shop



Installs and repairs glass windows, doors, and mirrors, storefront and overhead glazing systems, partition glass walls and sneeze guards

# BUREAU OF BUILDING AND STREET REPAIR

## City Facilities: Locksmith Shop



Provides security services, including maintenance and new installations of various locking systems: high security, card reader, magnetic and master key

# BUREAU OF BUILDING AND STREET REPAIR

## City Facilities: Paint Shop



- Paints the interiors and exteriors of City buildings
- Abates graffiti on and around City buildings and inside tunnels
- Works on special projects, such as Chinatown dragon lights

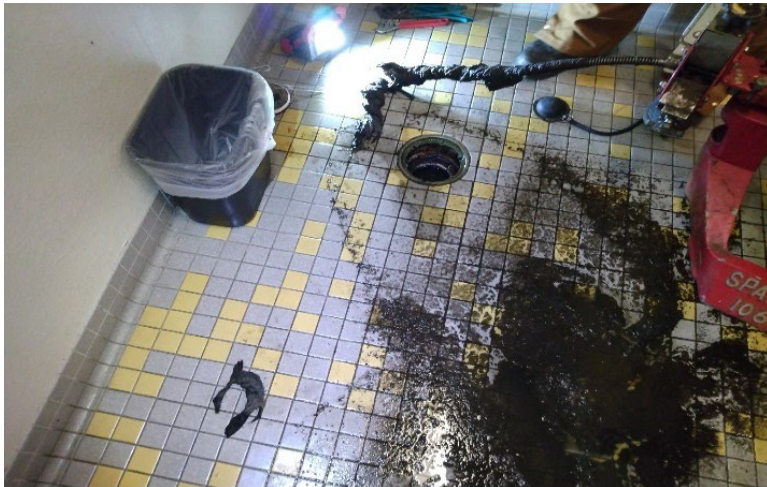
# BUREAU OF BUILDING AND STREET REPAIR

## City Facilities: Plumbing Shop



Installs new plumbing water-heating systems and fixtures

Repairs, maintains and replaces building plumbing gas, waste and water systems



# BUREAU OF BUILDING AND STREET REPAIR

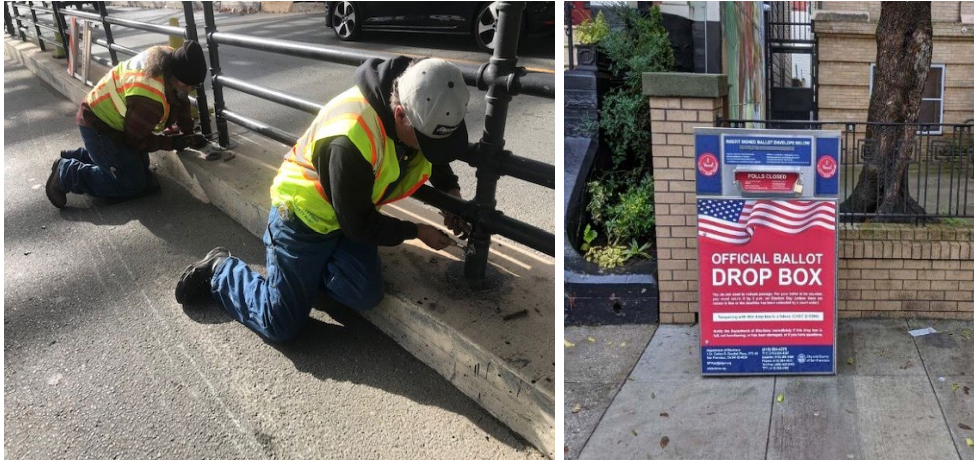
## City Facilities: Roof Shop



- Installs new roofs
- Repairs leaky roofs

# BUREAU OF BUILDING AND STREET REPAIR

## City Facilities: Sheet Metal Shop



- Installs and repairs HVAC systems and ventilation systems
- Installs new ducting
- Repairs bridge decks, guardrail and median rail
- Installs and repairs fences
- Installs and repairs metal trash cans and ballot drop-off boxes

# BUREAU OF STREET AND BUILDING REPAIR

## City Facilities: Soft Floor Shop



Installs carpet squares, rolled carpet, linoleum and bio-based floor tiles



# BUREAU OF STREET AND BUILDING REPAIR

## City Facilities: Steamfitter Shop



Installs, maintains, inspects and certifies boilers, heating systems and HVAC systems for all City agencies



# BUREAU OF BUILDING AND STREET REPAIR

## City Facilities: Tile Shop



Provides tile installation, repair and renovation services for all City buildings and plazas



**Thank you!**