



Meeting Date: November 21, 2022

To: Sanitation and Streets Commission

Maryo Mogannam, Chair

Ike Kwon, Vice Chair

Thomas Harrison

Kimberlee Hartwig-Schulman

Christopher Simi

Through: Carla Short, Interim Public Works Director
DiJaida Durden, Deputy Director for Operations

From: Chris McDaniels, Bureau of Street Environmental Services Superintendent

Subject: Informational Overview of Bureau of Street Environmental Services Proactive Cleaning Methodologies

Director's Recommendation: Receive and discuss informational presentation.

Executive Summary: This presentation summarizes of the Bureau of Street Environmental Services proactive cleaning methods, including: CleanCorridorsSF, mechanical sweeping, bike lane sweeping, Broom Support, the Corridors program, Community Ambassadors, Hotspots Encampment Crews, the Tenderloin Joint Field Operations, the night crew and graffiti abatement.

Attachments:

· Attachment 1: Presentation

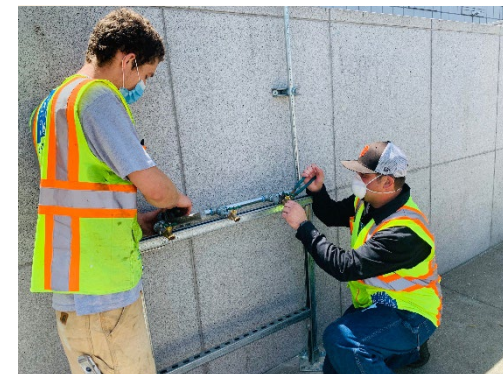


November 21 , 2022

Proactive Cleaning

Chris McDaniels

Superintendent of Bureau of Street Environmental Services



Proactive Cleaning: CleanCorridorsSF

Coordinated deep cleaning operation that targets a different neighborhood commercial corridor every Thursday with a crew of 15 to 20 employees who:

- power wash and sweep sidewalks
- flush down the roadway
- remove graffiti
- spruce up tree wells



CleanCorridorsSF: Schedule

| | | | | | |
|----------|-----|---|----------|-----|---|
| 8/3/22 | D5 | Fillmore from Pine to McAllister | 10/20/22 | D5 | Gough from Hayes to Haight Hayes from Laguna to Gough |
| 8/11/22 | D6 | Larkin from Post to McAllister | 10/27/22 | D6 | Polk from Post to Golden Gate |
| 8/18/22 | D7 | West Portal from Ulloa to St. Francis | 11/3/22 | D7 | Sloat and Wawona from 43rd to Great HWY |
| 8/25/22 | D8 | Castro from 19th to Market 18th from Noe to Diamond Market from Castro to Dolores | 11/17/22 | D8 | Valencia from 22nd to 18 th 18th from Valencia to Dolores |
| 9/1/22 | D9 | Mission from 15th to 24th | 12/1/22 | D9 | Valencia from 22nd to Cesar Chavez Mission from Cesar Chavez to 24th |
| 9/8/22 | D8 | 3rd from Van Dyke to Hudson | 12/8/22 | D10 | Leland from Bayshore to Delta Bayshore from Leland to Sunnydale |
| 9/15/22 | D11 | Mission from Geneva to Silver Excelsior from Mission to Paris | 12/15/22 | D11 | Broad from Plymouth to Orizaba Randolph from Orizaba to 19th |
| 9/22/22 | D1 | Clement from Arguello to Funston | 12/22/22 | D1 | Balboa from 34th to 45th |
| 9/29/22 | D2 | Union from Gough to Steiner Fillmore from Union to Chestnut | 12/29/22 | D2 | Chestnut and Lombard (westbound) from Fillmore to Divisadero include side streets |
| 10/6/22 | D3 | Polk from Union to Geary include side streets | | | |
| 10/13/22 | D4 | Taraval from 40th to 48th | | | |

Proactive Cleaning: Mechanical Sweeping

90%

of San Francisco streets
cleaned with mechanical sweepers

150,000

curb miles
swept annually

25,000

tons of litter and debris
collected annually

residential streets
typically

2x per month

commercial areas
at least

1x per week

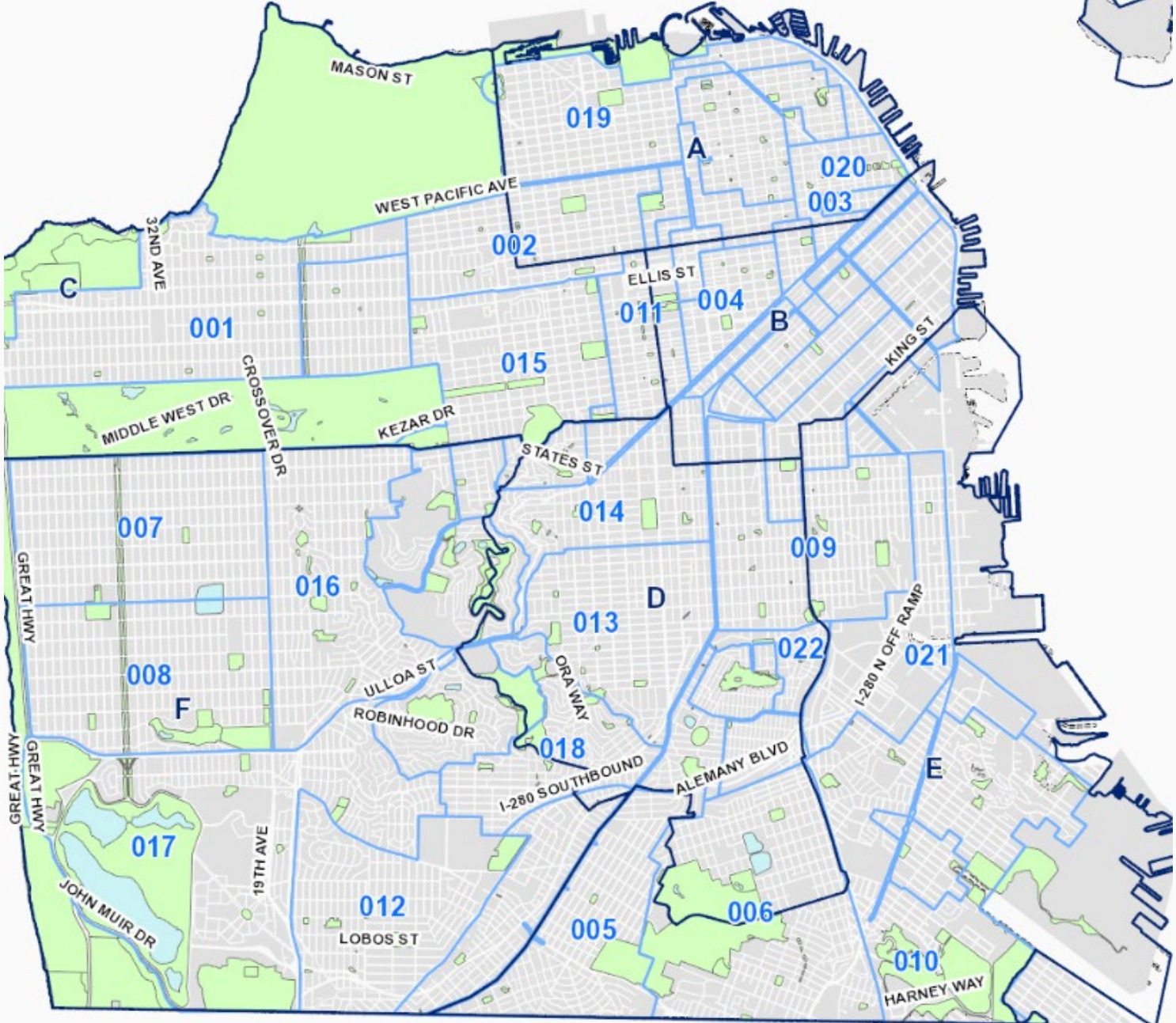
Removes litter
from residential and commercial corridors

Prevents trash and leaves
from entering the City's combined sewer system

Reduces the amount of pollutants
entering the San Francisco Bay and Pacific Ocean



Mechanical Sweeping Map



Proactive Cleaning: Bike Lane Sweeping

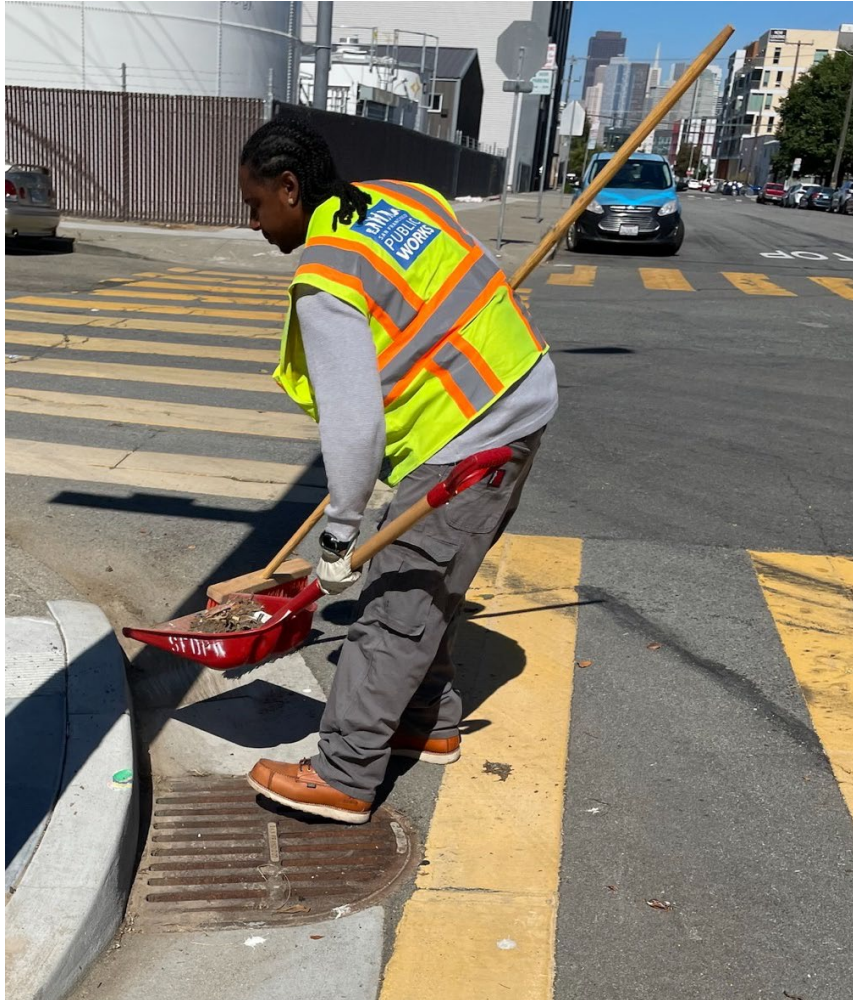
- Remove debris from protected bike lanes with specialized trucks to enhance safety for cyclists
- Regular mechanical sweepers are too wide to access the narrow bike lanes



Proactive Cleaning: Broom Support



Before:
Vegetation attracts debris build up



During:
Crews remove debris



After:
Spotless catch basins

Proactive Cleaning: Corridors Program

contingent of

145

workers

services more than

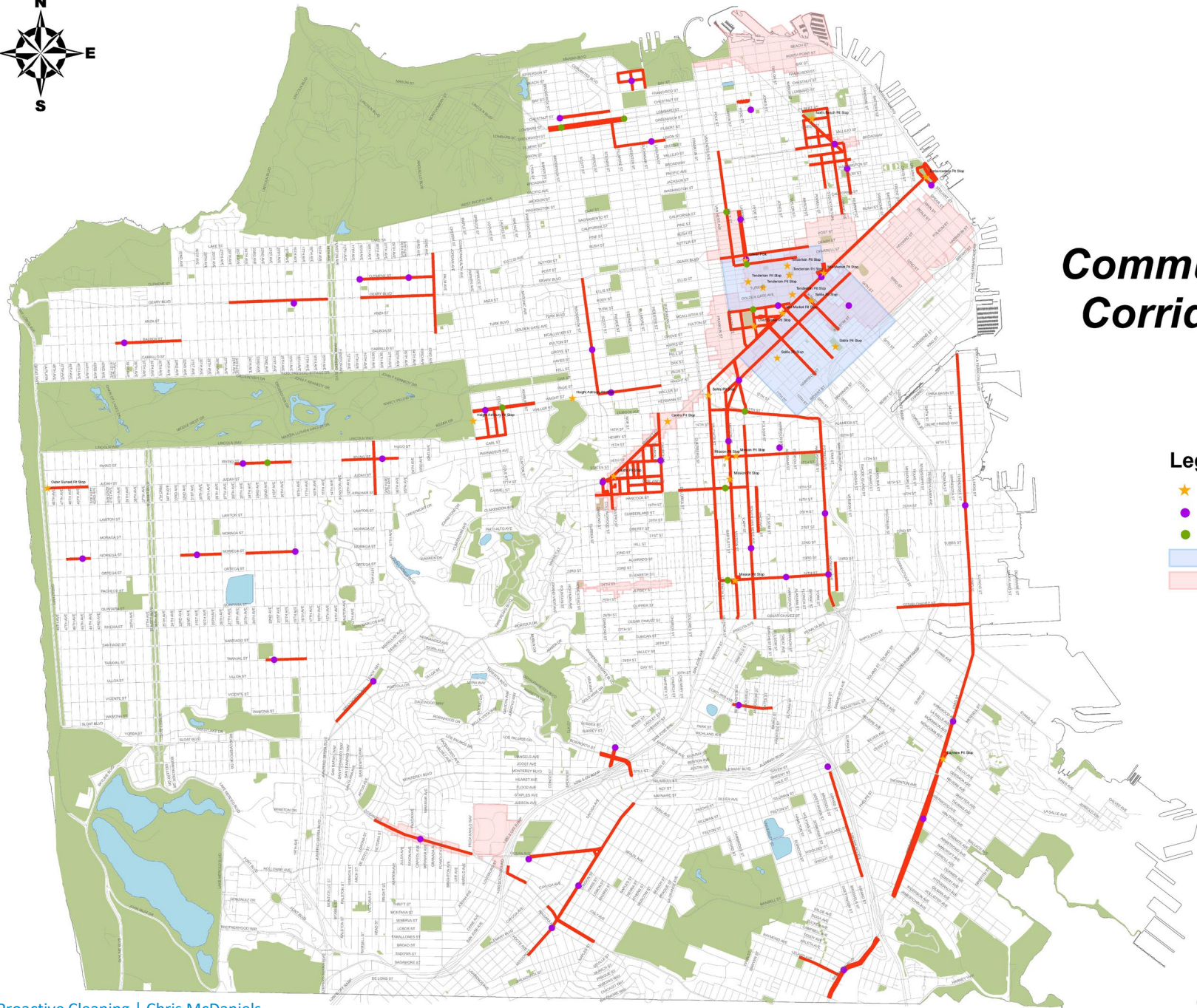
700

commercial blocks

from the Mission to the Richmond,
from North Beach to the Castro

We also partner with Caltrans to clean up the
areas around the freeway ramps.



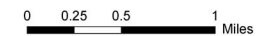


Community Corridors

Legend

- ★ Pit Stop
- Current Corridor Supply Box
- Future Corridor Supply Box
- TL and SOMA Clean
- CBD

San Francisco Public Works
Source: Dept of City Planning
February 2019



Proactive Cleaning: Community Ambassadors – Chinatown



Community Ambassadors: Tenderloin



Proactive Cleaning: Hotspots Encampment Crews



- **General cleaning around encampments, which includes trash removal and power washing**
- **Coordinated response through the City's Healthy Streets Operations Center for encampment resolutions**

Proactive Cleaning: Tenderloin Joint Field Operations



Multi-agency operation created in late 2021 to address the drug overdose crisis, public safety and other quality-of-life concerns.

Public Works' role:

- Remove litter and illegal dumping
- Power wash sidewalks
- Repair streetlights
- Collect used needles
- Abate graffiti

Proactive Cleaning: Night Crew



- Embarcadero Plaza
- Harry Bridges Plaza
- UN Plaza
- Market Street
- Mechanics Plaza
- Mission Street
- Tenderloin Linkage Center
- The Embarcadero

Proactive Cleaning: Graffiti Abatement



Public Works crews remove graffiti tags and stickers from public property in the public right of way

Public Works inspectors notify private property owners and other government agencies that they must remove graffiti from their property

Private Graffiti Pilot Program to start soon will allow private property owners on business corridors to opt in and allow SFPW to address graffiti with no cost to the owner



**THANK YOU
ANY QUESTIONS?**