



**Meeting Date:** 12/2/2022

**To:** Public Works Commission  
Lauren Post, Chair  
Fady Zoubi, Vice Chair  
Lynne Newhouse Segal  
Paul Woolford

**Through:** Carla Short, Interim Public Works Director  
Albert Ko, Deputy Director & City Engineer

**From:** Edward Yee, Acting Bureau Manager  
Infrastructure Division – Bureau of Construction Management

**Subject:** Informational Overview of Infrastructure Division - Bureau of Construction Management

---

**Director’s Recommendation:** Receive and discuss informational presentation.

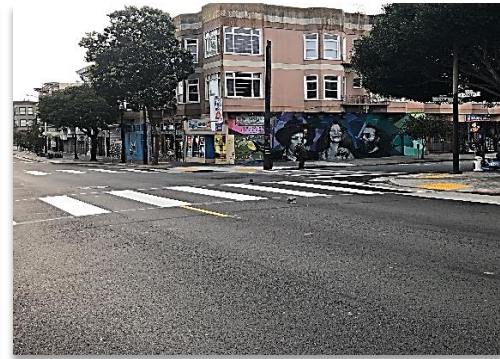
**Executive Summary:** Infrastructure Division - Bureau of Construction Management (BCM) provides services to inspect and manage construction contracts performed by private contractors hired by the City. BCM serves the citizens of San Francisco by ensuring that public improvements will be performed safely, efficiently and in a timely manner. Standards are the same whether BCM engineers manage the construction of infrastructure or renovations.

BCM enforces contract and permit requirements, interprets plans and specifications, coordinates construction activities, and resolves field issues. BCM projects include capital roadway and utilities improvements, streetscapes, parks, and plaza restorations, and infrastructure upgrades.

As a bureau that interacts with various governmental departments and the general public, BCM employs staff and engineers that are committed to customer service, teamwork, and continuous improvement.

**Attachments:**

- Attachment 1: PowerPoint Presentation



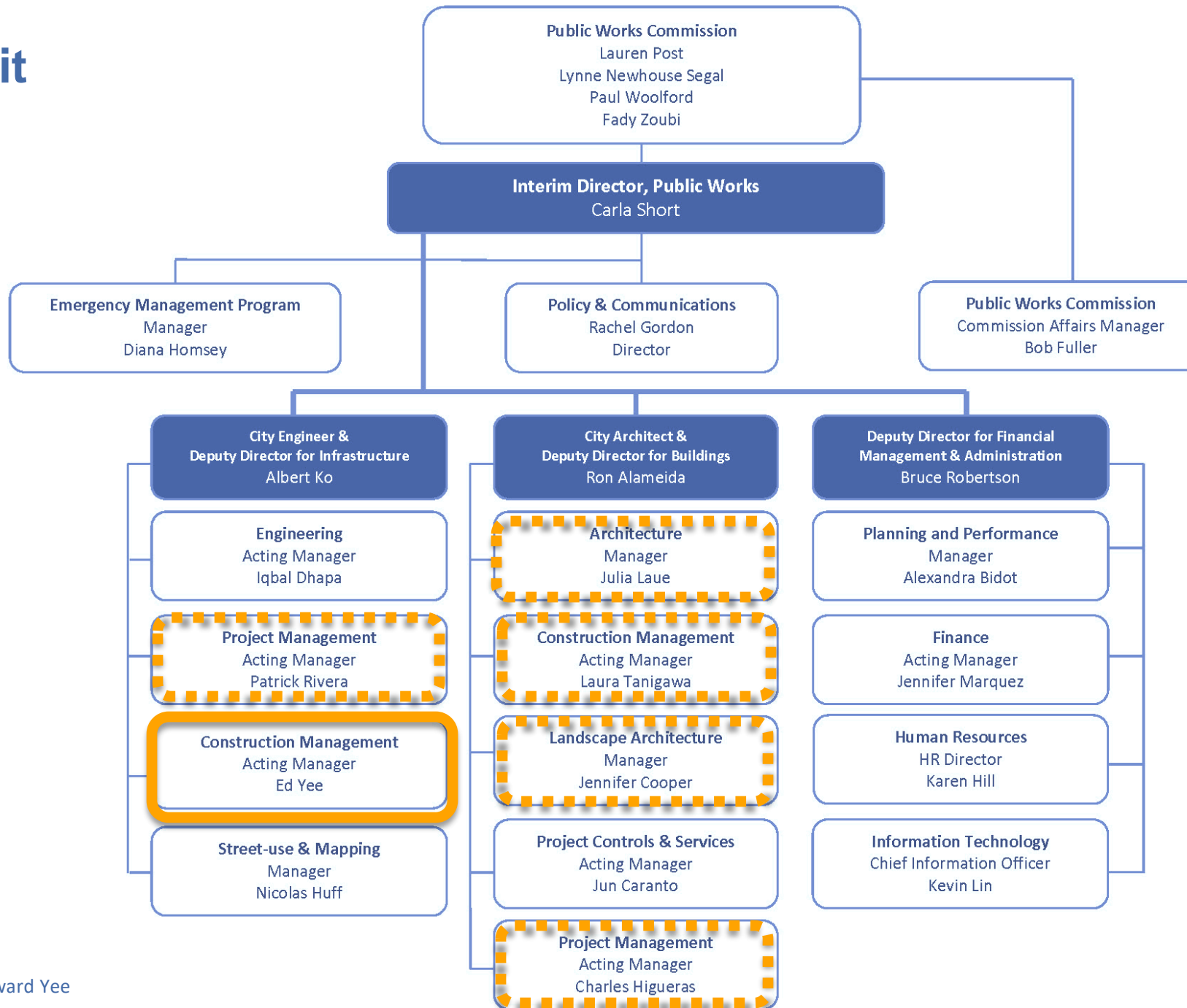
December 16, 2022  
Infrastructure Design & Construction (IDC)

# Construction Management

Edward Yee  
Acting Bureau Manager, IDC-Construction Management



# Where We Fit





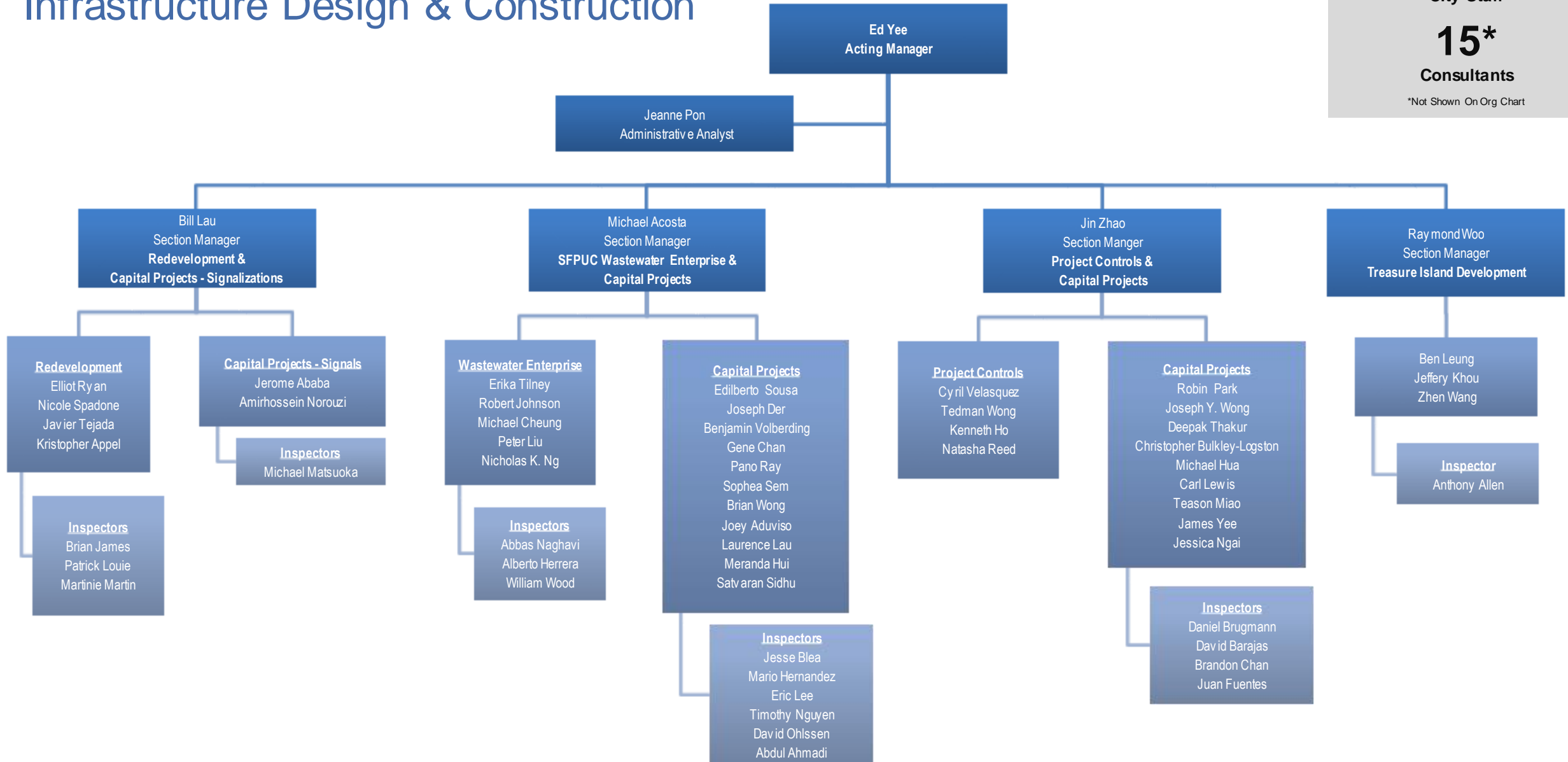
# Bureau of Construction Management

## Infrastructure Design & Construction

**62**  
City Staff

**15\***  
Consultants

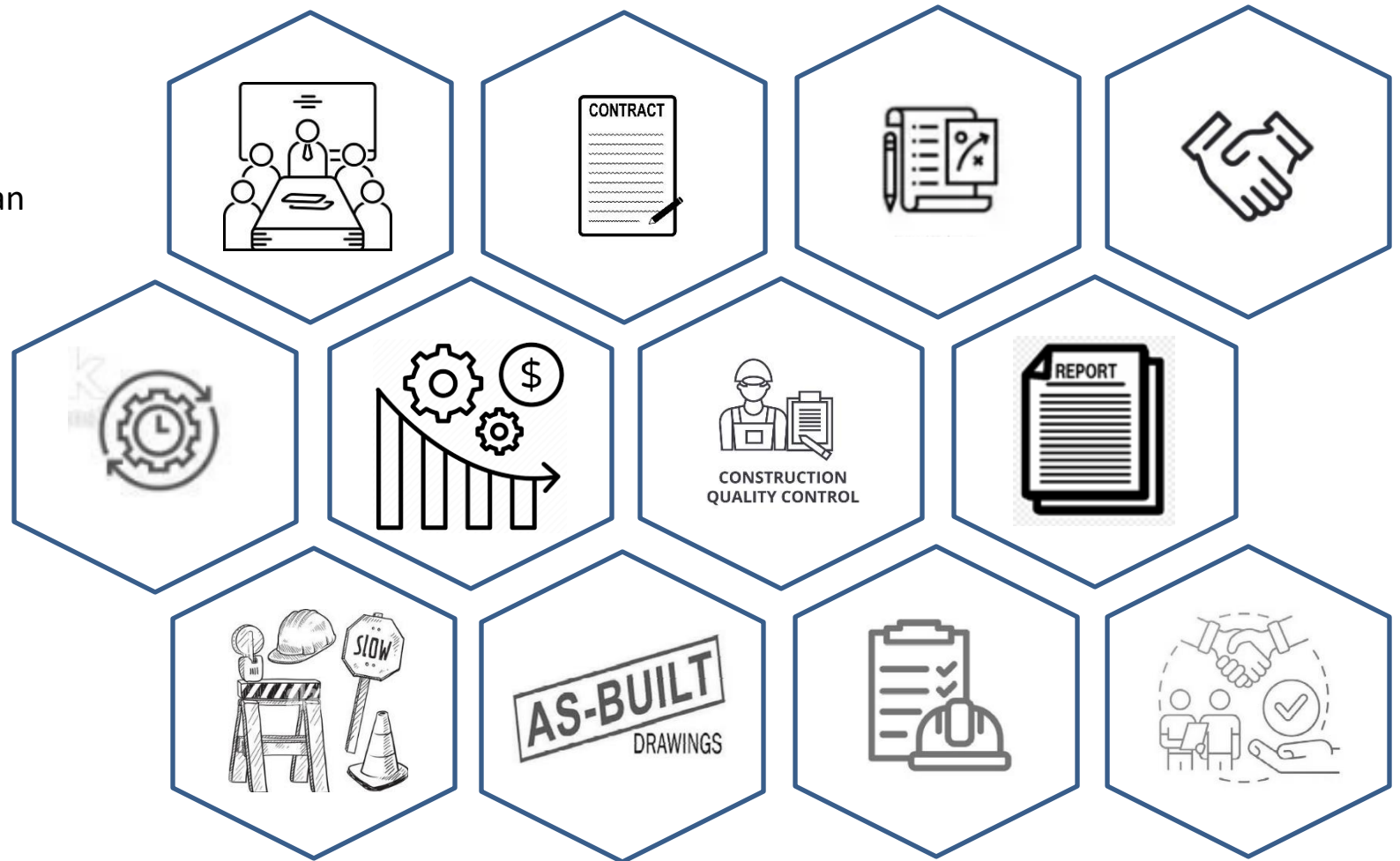
\*Not Shown On Org Chart



# What We Do:

## Construction Phase Tasks:

- ✓ Pre-Construction Conference
- ✓ Contract Administration
- ✓ Construction Management Plan
- ✓ Partnering
- ✓ Time Management
- ✓ Cost Management
- ✓ Quality Management
- ✓ Reporting
- ✓ Safety
- ✓ Record Drawings
- ✓ Punchlist
- ✓ Closeout

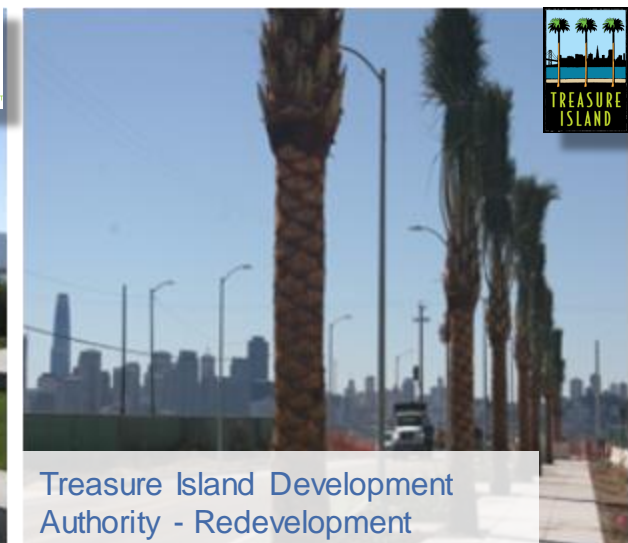
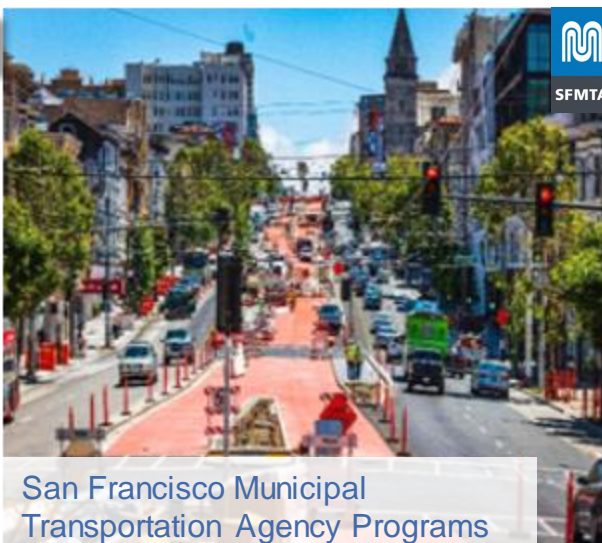
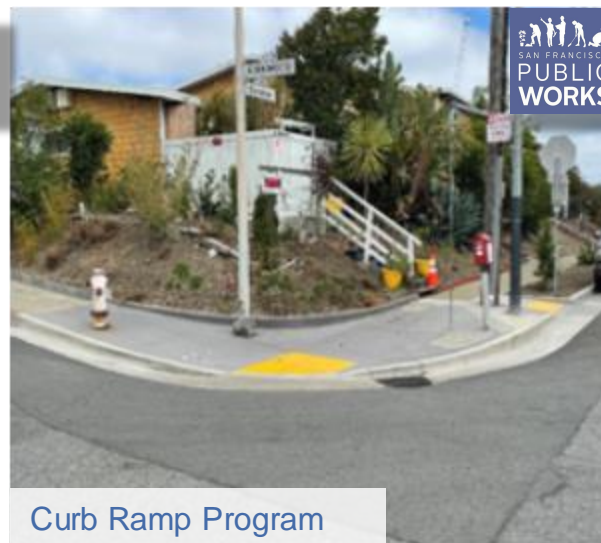




# Key Projects and Project Partners



# Bureau of Construction Management Infrastructure Projects



# Key Project Statistics

81

Total active construction projects & programs

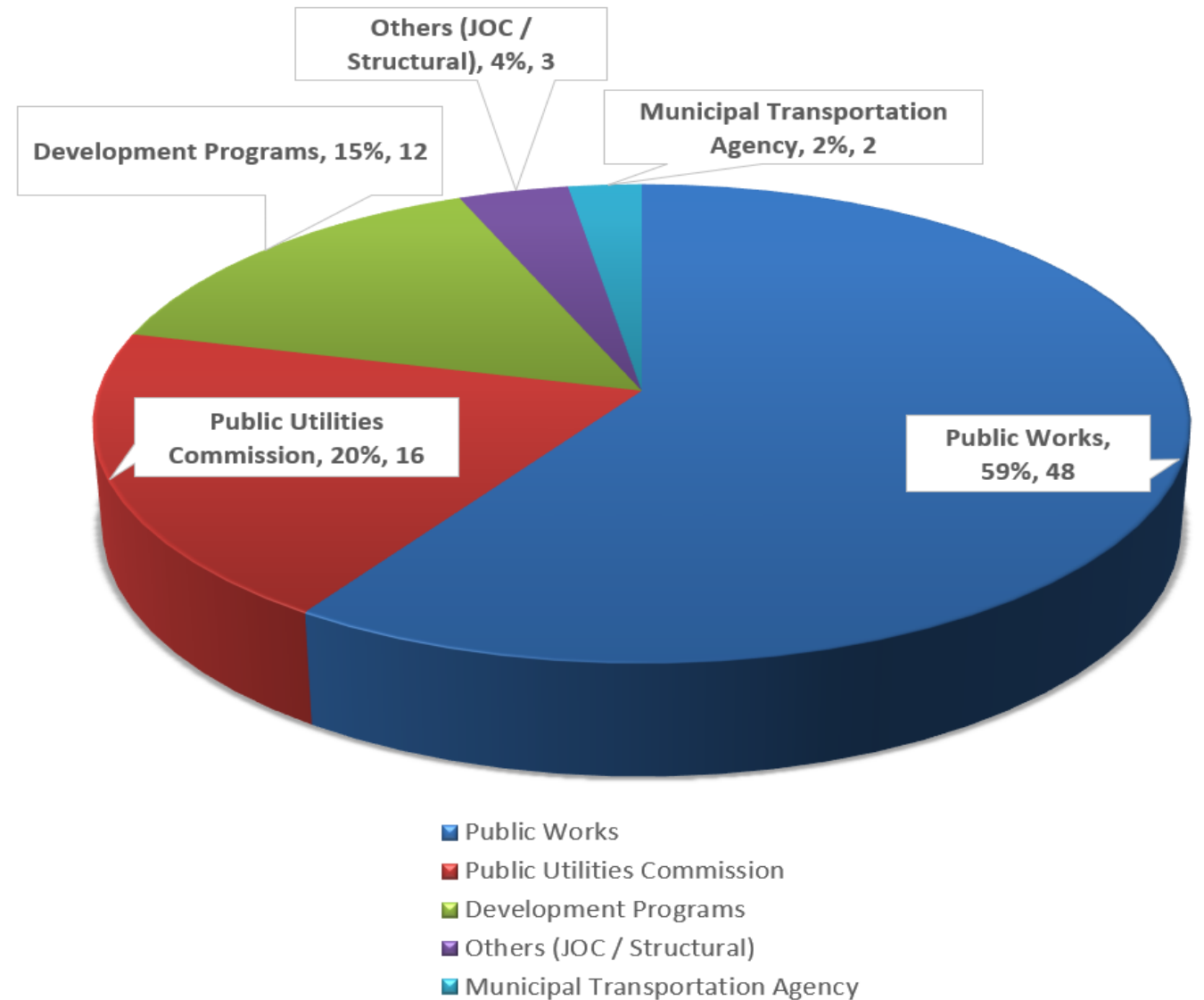
45

Estimated future construction projects for FY22 and FY23

\$1.522 billion

Approximate contract value of active projects and programs the bureau oversees, manages and services.

## Project Breakdown by Lead Agency





# Key Programs / Projects & Partners

## San Francisco Public Works

Corridor Projects • Roadway & Re-Surfacing Program  
Streetscape Program • Curb Ramp Program  
Signalization Projects – Public Works+SFMTA Joint Venture  
Capital Projects – Public Works+SFMTA Joint Venture

## San Francisco Public Utilities Commission

Renewal & Replacement Program  
Wastewater Enterprises – Sewer System Improvement Program  
City Distribution Division Projects

## San Francisco Municipal Transportation Agency

L-Taraval Improvement Project  
Van Ness Corridor Transit Improvement Project  
16<sup>th</sup> Street Improvement Project

## Office of Community Investment & Infrastructure

Mission Bay Infrastructure Projects  
Hunters Point Shipyard Phase 1 • Candlestick Point Phases 1-4

## Office of Economic Workforce Development

Visitation Valley • Potrero Power Station

## Mayor's Office of Housing & Community Development

Sunnydale Hope Phases 1A1 – 1A3  
Potrero Hope Phases 1-2  
Hunters View Phases 1-3

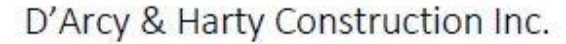
## Port of San Francisco

Pier 70 • Mission Rock

## Treasure Island Development Authority

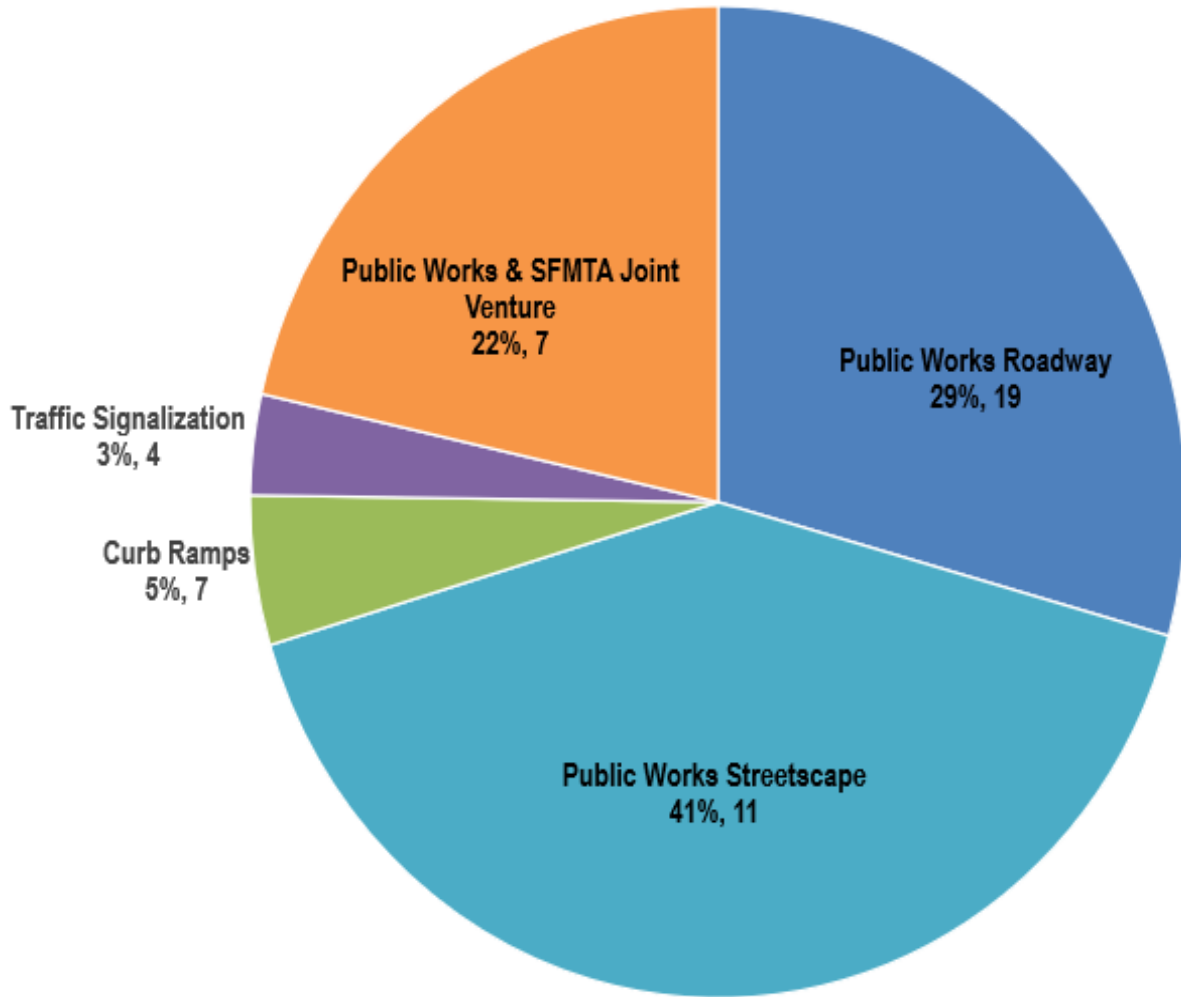


# Other Project Partners: General Contractors & Developers



# Lead Agencies / Contract Amounts

Public Works-led Contracts



Agency	Contract Amount	Project Count
<b>Public Works</b>	<b>\$ 387,205,149.80</b>	<b>48</b>
Public Works Roadway	\$ 113,635,933.74	19
Public Works Streetscape	\$ 158,751,984.02	11
Public Works & SFMTA Signal	\$ 12,698,551.01	4
Public Works - Curb Ramps	\$ 18,870,970.98	7
Public Works & SFMTA Joint Venture	\$ 83,247,710.05	7
<b>SFPUC</b>	<b>\$ 149,858,822.75</b>	<b>16</b>
SFPUC Renew and Replacement	\$ 54,126,221.75	10
SFPUC Wastewater Enterprise	\$ 73,013,167.00	3
SFPUC – City Distribution Division	\$ 22,719,434.00	3
<b>Office of Community Investment &amp; Infrastructure &amp; Other Development Programs</b>	<b>\$ 702,246,419.56</b>	<b>12</b>
<b>SFMTA</b>	<b>\$ 279,067,382.57</b>	<b>2</b>
SFMTA	\$ 279,067,382.57	2
<b>Other</b>	<b>\$ 4,072,739.11</b>	<b>3</b>
Other	\$ 1,478,611.00	1
Structural	\$ 1,715,668.00	1
Job Order Contract (JOC)	\$ 878,460.11	1
<b>Contract Totals</b>	<b>\$ 1,522,450,513.79</b>	<b>81</b>



# Connection to Bigger Picture

## Improvements to Capital Infrastructure



to quickly respond  
to a major earthquake  
or other disaster and  
recover from its aftermath

## Investment in Wastewater Facilities



to achieve public health  
benefits, improve the  
environment and enhance  
quality of life

## Resilience Plan



to ensure implementation  
of mitigation measures and  
mitigation monitoring plans  
to comply with standard air  
quality measures and  
deliver net-zero emissions

# Funding Sources

- **Public Works**
- **Redevelopment**

Funding Source	Project	Scope	Funding
Public Works	Street Resurfacing Project	Roadway	<ul style="list-style-type: none"> <li>• SB-1 &amp; HUTA Gas Tax</li> <li>• Proposition K</li> <li>• General Obligation Bond</li> <li>• Certificate of Participation</li> </ul>
	Streetscape Program	Streetscape / Various Features of Work (e.g. sewer, water)	<ul style="list-style-type: none"> <li>• General Fund / Addback</li> <li>• Interagency Plan Implementation Committee / CFD Funds</li> <li>• Bonds</li> <li>• Grants</li> </ul>
	Curb Ramp Program	Americans with Disabilities Act (ADA) Curb Ramps	<ul style="list-style-type: none"> <li>• General Fund</li> <li>• Certification of Participation</li> <li>• Proposition K</li> </ul>
Office of Community Investment & Infrastructure & Other Development Programs	Mission Bay	Oversee/manage Community Facilities District (CFD) and construction inspections of various features of work (e.g. sewer, water, signals, roadways, curb ramps, pump stations and parks)	Office of Community Investment & Infrastructure
	Hunters Point Shipyard Phase 1		Office of Community Investment & Infrastructure
	Candlestick Point		Office of Community Investment & Infrastructure
	Hunters View Phase 3		Mayor's Office of Housing and Community Development
	Sunnydale Hope / Potrero Hope		Mayor's Office of Housing and Community Development
	Treasure Island Development		General Fund



# Funding Sources

- **San Francisco Public Utilities Commission**
- **San Francisco Municipal Transportation Agency**



Funding Source	Project	Scope	Funding
San Francisco Public Utilities Commission	Renewal & Replacement Projects	Sewer	<ul style="list-style-type: none"> <li>• SFPUC Wastewater Enterprise (WWE) Revenue or Bond funds</li> <li>• WWE Capital Project Fund</li> </ul>
	Wastewater Enterprise Program	Wastewater facilities	<ul style="list-style-type: none"> <li>• Local revenue funds</li> <li>• State bonds</li> </ul>
San Francisco Municipal Transportation Agency	L-Taraval	Sewer	<ul style="list-style-type: none"> <li>• SFPUC Revenue Bond</li> </ul>
	L-Taraval	Roadway	<ul style="list-style-type: none"> <li>• Paving Proposition K</li> <li>• General Obligation Bond</li> </ul>
	Van Ness BRT	Sewer	<ul style="list-style-type: none"> <li>• SFPUC Revenue Bond</li> </ul>
	Van Ness BRT	Roadway	<ul style="list-style-type: none"> <li>• General Fund</li> <li>• General Obligation Bond</li> </ul>
	Traffic Signalization	Traffic signalization	<ul style="list-style-type: none"> <li>• Caltrans Active Transportation Program</li> <li>• General Obligation Bonds</li> <li>• Proposition K</li> <li>• General Fund</li> <li>• SFMTA operating and capital funds</li> </ul>



# Construction Challenges



Differing site conditions



Timely support from third party companies



Skilled labor shortages



Supply chain delays



Support from sister agencies



Technology support

# Questions?



[sfpublicworks.org](http://sfpublicworks.org)