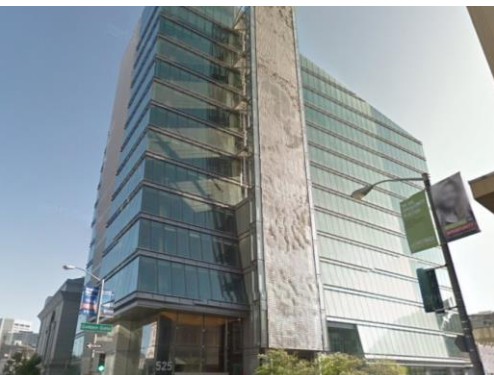




DIVISION OVERVIEW

Building Design & Construction

Ron Alameida – City Architect and Deputy Director
Public Works Commission Meeting – September 2, 2022



Division Structure

Scan to see our project portfolio!
sfpublicworks.org/bdcpportfolio



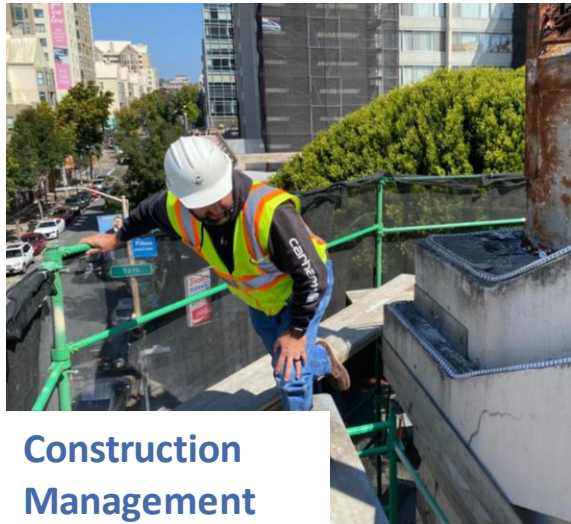
Project Management



Architecture



Landscape Architecture



Construction Management



Project Controls & Services



Capital Projects & Program Controls



Operations

Bureau of Project Management

Building Design & Construction

Project Scope



Budget



Schedule



Regulations



Bureau of Project Management

Current Major Programs



Earthquake Safety and Emergency Response (ESER) Program



Public Health & Safety Bond



SFMTA-Sponsored Projects



HSH Shelter Projects



SF Arts Commission Projects



SF Library Projects

Bureau of Architecture



Glen Canyon Rec Center, Seismic Upgrade & Renovation, 2018
Photos Courtesy of Brian Wong Photography

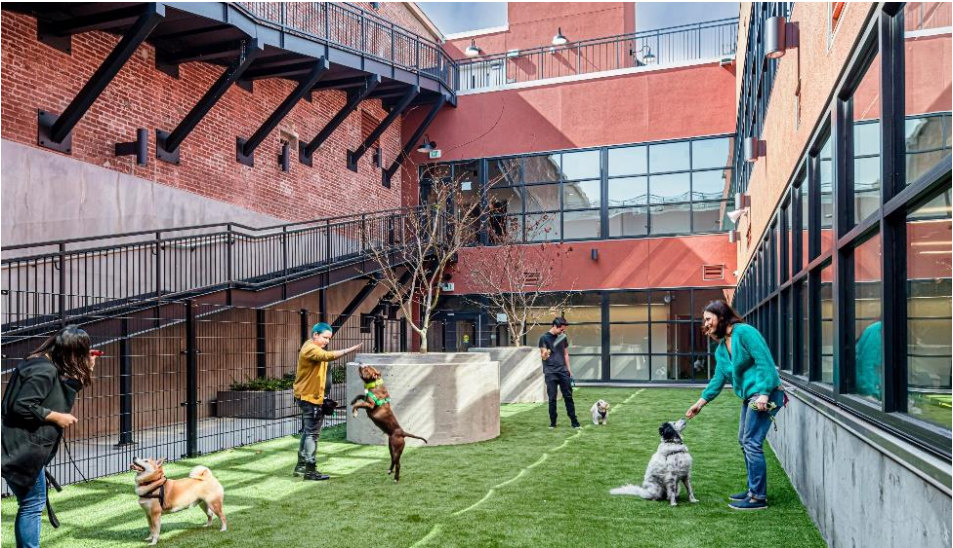
Bureau of Architecture



Fire Station No. 16, 2019

Photos Courtesy of Alejandro Velarde Photography

Bureau of Architecture



SF Animal Care & Control, 2021
Photos Courtesy of Alejandro Velarde Photography

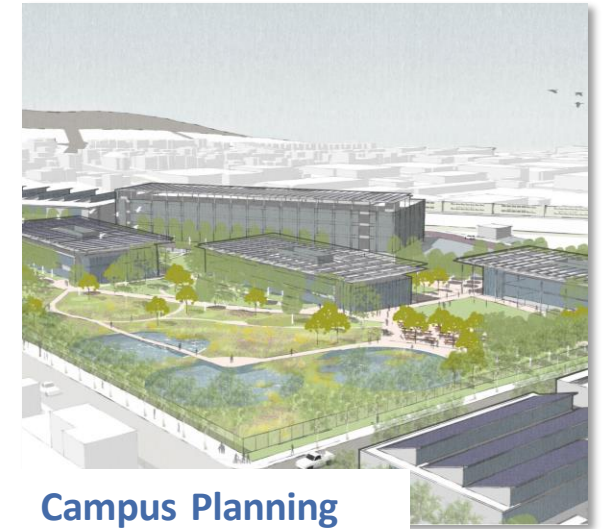
Bureau of Architecture



Margaret Hayward Playground and Community Center, 2022
Photos Courtesy of Bruce Damonte Photography

Bureau of Landscape Architecture

Major Areas of Practice

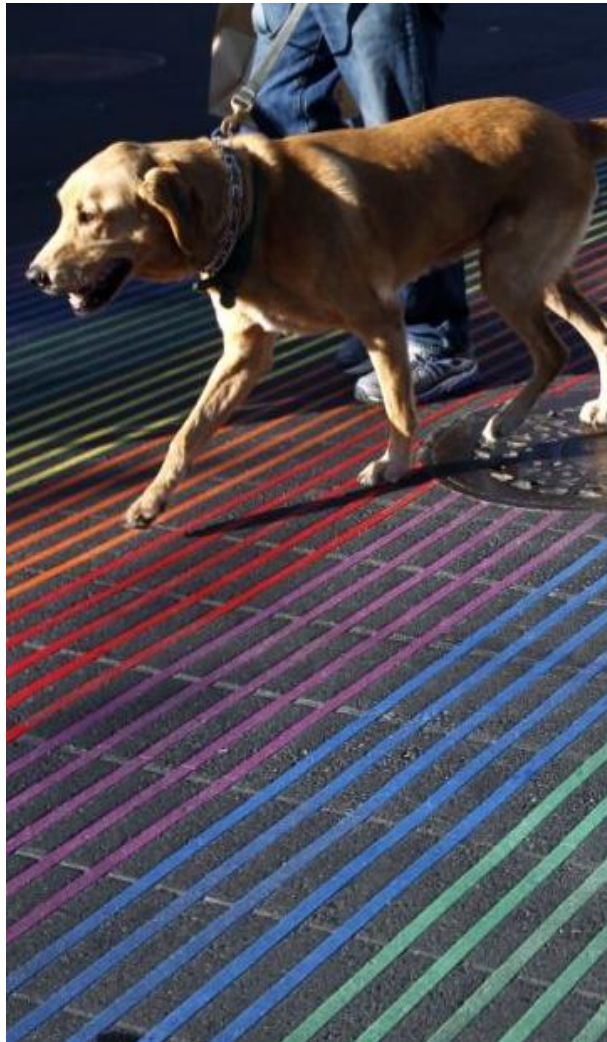


Bureau of Landscape Architecture



Margaret Hayward Playground and Community Center, 2022
Photos Courtesy of Bruce Damonte Photography

Bureau of Landscape Architecture



Better Market Street, Castro Street, Fern Alley, Masonic Avenue
Streetscape Projects

Bureau of Landscape Architecture

Emerging Programs



Resilience Planning



Biodiversity and Habitat Corridors



Nature Play

Bureau of Construction Management



Project Controls and Services

Prepare
Project
Manuals and
Bid Documents

Coordinate
Scopes of Work
and Manage
Task Orders

Preparations
for As-Needed
Consultant
Services

Manage
As-Needed
Construction
Services

Review
Environmental
Requirements,
Project Specs
and Support

Coordinate
Hazardous
Abatement

Manage
Materials
Testing
Services,
Plans and
Proposals

Perform
Lab and Field
Materials
Testing

Review
Construction
Materials
Submittals

Coordinate
Contractor
Evaluation
Program

Track Payroll
Records and
Project
Information

Capital Project & Program Controls

Principally responsible for providing financial management and strategic support to capital projects and programs.

ESER 2020

The ESER 2020 budget is \$628,500,000 and the total approved for the two bond sales to date. The following is a summary component:

ESER 2020: As of September 2021

Bond Components and Projects	Bond Authorized Amount	Bond Component Budget	Approved
Emergency Firefighting Water System	253,500,000	253,170,852	2
Neighborhood Fire Stations & Support Facilities	225,000,000	220,827,280	2
District Police Stations & Support Facilities	121,000,000	119,163,994	2
Disaster Response Facilities	70,000,000	68,937,848	2
D-1-1 Response Facilities	9,000,000	8,863,438	2
Oversight, Accountability & Cost of Issuance		9,536,028	
TOTAL (1)	628,500,000	628,500,000	10

(1) PeopleSoft financial data as of 9/30/21/2021

The Accountability reports for the first and second bond sales are available at <http://www.sfearthquakesafety.org/eser-reports.html>.

Expenditures and Encumbrances

The ESER 2020 expenditures and encumbrances are \$2,500,000. The expenditures represent 2% of the total current approved.



Ronald Alameida, Deputy Director & City Architect | Building Design & Construction
ronald.alameida@sfdpw.org | T. 628.271.3075 | 49 South Van Ness Ave, Suite 1600, San Francisco, CA 94103

The Earthquake Safety and Emergency Response Bond Program 2010, 2014 & 2020

Quarterly Status Report

October through December 2021



Fireboat Station 35 at Pier 22 1/2

Prepared for the:

- Office of the Chief Medical Examiner
- Department of Emergency Management
- San Francisco Fire Department
- San Francisco Police Department
- Public Utilities Commission
- Recreation and Parks Department

Submitted by
Charles Higuera, FAIA
Program Manager

Operations

Principally responsible for managing division-wide business administrative functions:

- Overhead budget management
- Procurement
- Personnel
- Safety
- Office Management



Questions?



sfpublicworks.org