



PUBLIC NOTICE

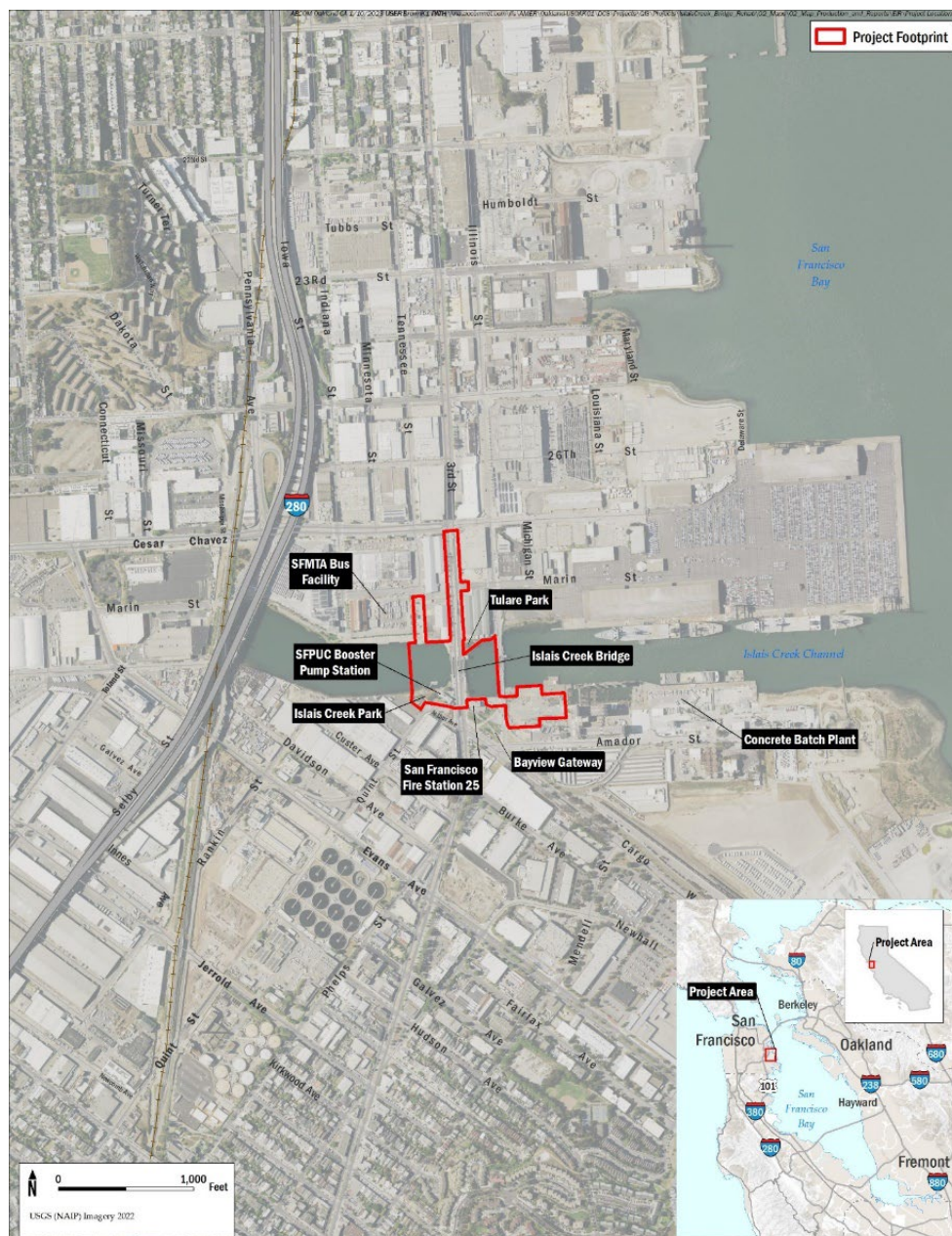
Availability of a Draft Environmental Assessment and Notice of Public Hearing

PROJECT INFORMATION	PUBLIC HEARING INFORMATION
Date: March 1, 2025	Meeting Date: March 18, 2025
Project Title: Islais Creek Bridge Replacement	Time: 6:00pm
Project Address: Third Street just north of Cargo Way	Location: Southeast Community Facility 1550 Evans Avenue San Francisco, CA 94124
Federal Aid No.: BHLO-5934(168)	Document Type: Draft Environmental Assessment
Neighborhood: Bayview / Hunters Point	
Project Sponsor: San Francisco Public Works, Thomas Roitman, 628.271.2404, thomas.roitman@sfdpw.org	

A Draft Environmental Assessment (Draft EA) has been prepared in accordance with the National Environmental Policy Act (NEPA). San Francisco Public Works, in coordination with the California Department of Transportation (Caltrans) assigned as NEPA lead agency by the Federal Highway Administration (FHWA), has studied this project's potential physical environmental effects and welcomes your comments on the adequacy of the Draft EA.

Project Description

The City and County of San Francisco is proposing to replace the existing Islais Creek Bridge along Third Street in San Francisco's Bayview neighborhood shown in the map below. Construction of the proposed project would result in the replacement of the existing drawbridge with a fixed bridge and large ships would no longer be able access the Islais Creek channel west of the new bridge. The new bridge would accommodate a center 24-foot-wide dedicated light-rail transit (light rail) tracks, two 11-foot travel lanes in each direction, a 12-foot-wide shared pedestrian/bicycle path on the eastern side of the bridge, and a 17-foot-wide shared pedestrian/bicycle path on the western side of the bridge. Construction is estimated to be approximately 24 months and is projected to start in January 2027. Throughout the construction duration, there would be no access for vehicles, the T-Third Street light rail service, or pedestrians to the bridge or Third Street between Marin Street to the north and Cargo Way to the south. Vehicles would be detoured around the site to other arterials. T-Third Street passengers would use bus shuttles in lieu of light rail service south of Islais Creek Bridge and the 15 Bayview Hunters Point Express and 91 Third Street/19th Avenue OWL buses would be detoured around the project site.



For translation services, please call 415-806-9269 or email languageaccess@sfdpw.org



Draft EA: The Draft EA provides a detailed project description, an analysis of physical environmental effects of the project, and identifies feasible mitigation measures and alternatives that would avoid or lessen the severity of project impacts. One or more of the alternatives being evaluated will have an effect on historic properties eligible for the National Register of Historic Places. San Francisco Public Works has evaluated whether adequate mitigation measures can be incorporated into the project plans. The Draft EA is available for public review and comment on the San Francisco Public Works website at <https://sfpublicworks.org/Islais-Creek-Bridge>, at the San Francisco Public Works office, 49 South Van Ness Avenue, Second Floor, Permit Center Public Review Room, San Francisco, CA 94103, and at the Caltrans District 4, Office of Local Assistance, 111 Grand Avenue, 12th Floor, Oakland, CA. Paper copies and alternative formats of the Draft EIR are available upon request to the project sponsor. Referenced documents are also available on the San Francisco Public Works website listed above.

Purpose of Notice

You are not required to take any action. If you wish to comment on the Draft EA, you may do so in either or both of the following ways:

WRITTEN COMMENTS	COMMENTS AT THE PUBLIC HEARING
Sponsor: Thomas Roitman, Project Manager	Location: Southeast Community Center
Via Mail: 49 South Van Ness Ave, Suite 700 San Francisco, CA 94103	1550 Evans Avenue San Francisco, CA 94124
Via Email: thomas.roitman@sfdpw.org	Date and Time: March 18, 2025 at 6:00pm
From March 1, 2025 to 5pm on April 17, 2025	

The purpose of the public hearing is for San Francisco Public Works to present studies to date on the location and/or design features of the proposal, discuss tentative construction schedules, and to provide a forum for public discussion of the major features, including social, economic, and environmental effects of the proposal. The hearing is being held prior to making any commitment to the various alternatives being presented at the public hearing and no studies or plans will be finalized until the complete public record has been analyzed including data gathered at the public hearing and received in response to the draft environmental document. The final deadline for submitting written statements and exhibits is April 17, 2025. Written material should be submitted to the project sponsor at the address listed above.

Additional information about the process may be found on San Francisco Public Works website. After the hearing but prior to requesting approval, all data gathered at the hearing or submitted for the record will be available for inspection and copying at the San Francisco Public Works office or for download from the project website.

The Southeast Community Center is accessible to persons using wheelchairs and others with disabilities. Assistive listening devices are available. Agendas are available in large print. Materials in alternative formats, ASL interpreters, real-time captioning and other accommodations will be made available upon request. Please make your request for alternative format or other accommodations, to Thomas Roitman, 628.271.2104, thomas.roitman@sfdpw.org. Providing at least 72 hours' notice prior to the meeting will help to ensure availability.

The nearest Muni light rail boarding platform is the T-Line stop at Third & Evans. Muni bus lines serving the area are the 15, 19, and 44 lines. There is accessible parking available at the Southeast Community Center.

In order to assist the city's efforts to accommodate persons with severe allergies, environmental illness, multiple chemical sensitivity or related disabilities, attendees at public meetings are reminded that other attendees may be sensitive to various chemical based scented products. Please help the city to accommodate these individuals.

General Information about Procedures

Members of the public are not required to provide personal identifying information when they communicate with San Francisco Public Works or staff. All written or oral communications, including submitted personal contact information, may be made available to the public for inspection and copying upon request and may appear on the department's website or in other public documents.

At the close of the public review period, San Francisco Public Works will prepare a Record of Public Hearing document to capture all comments on the Draft EA presented at the public hearing and received in writing during the public review period. This Record of Public Hearing document and all other associated documents will be made available on the San Francisco Public Works website at <https://sfpublicworks.org/Islais-Creek-Bridge>.

For translation services, please call 415-806-9269 or email languageaccess@sfdpw.org



U.S. Department of Transportation
Federal Highway Administration

