

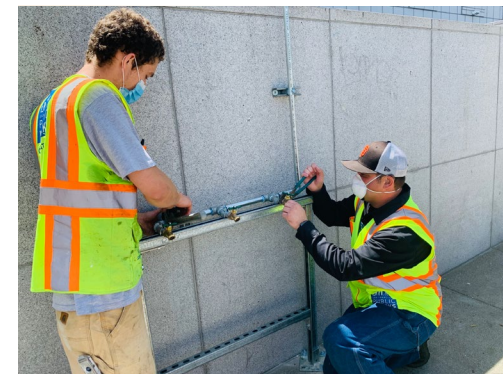


September 18, 2023

# Performance and Data Evaluation: Urban Forestry

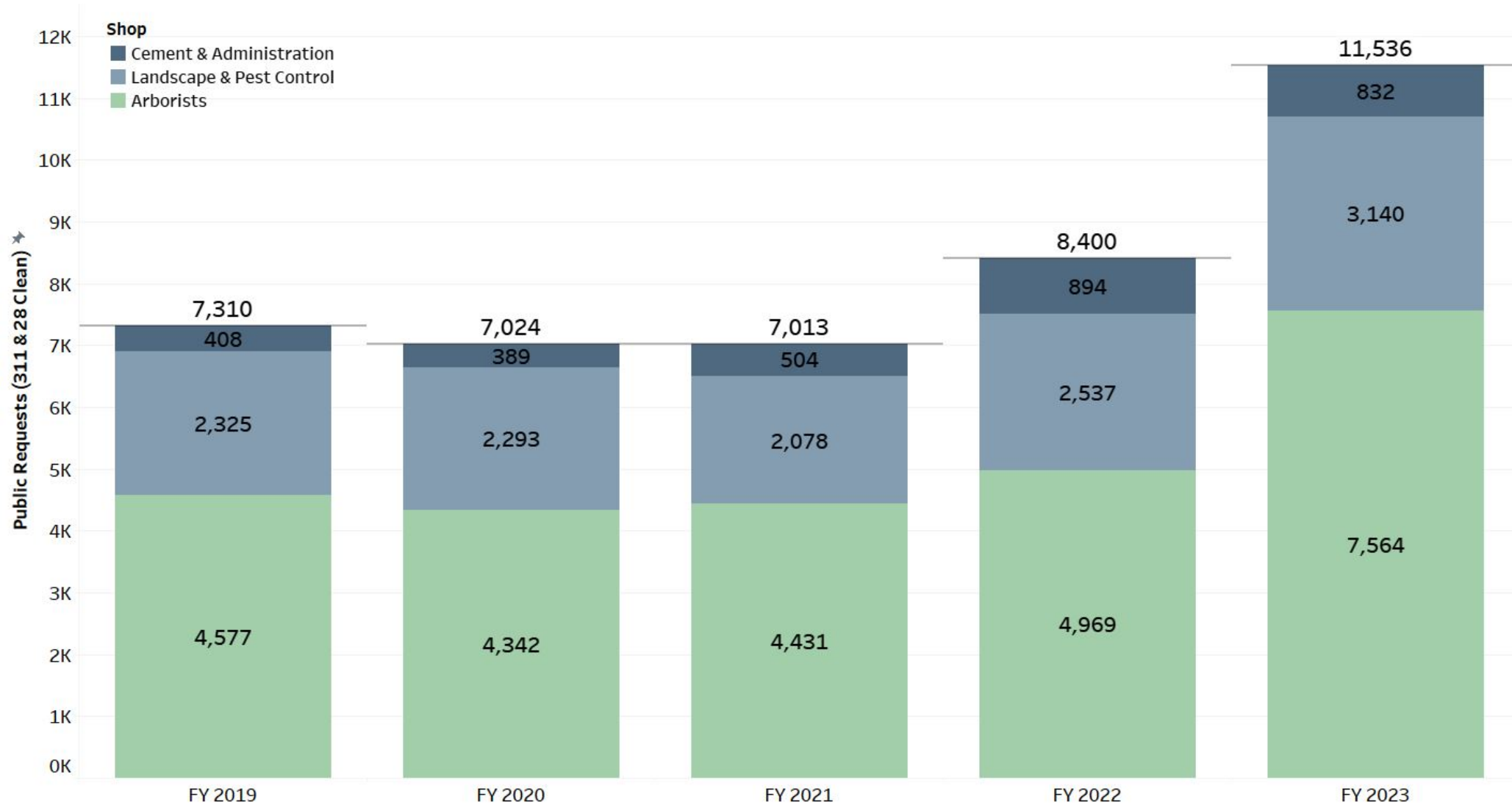
Marianna Williams

Acting Superintendent of Bureau of Urban Forestry



## Annual count of public requests by shop (via 311 or 28Clean)

Public Requests by Shop

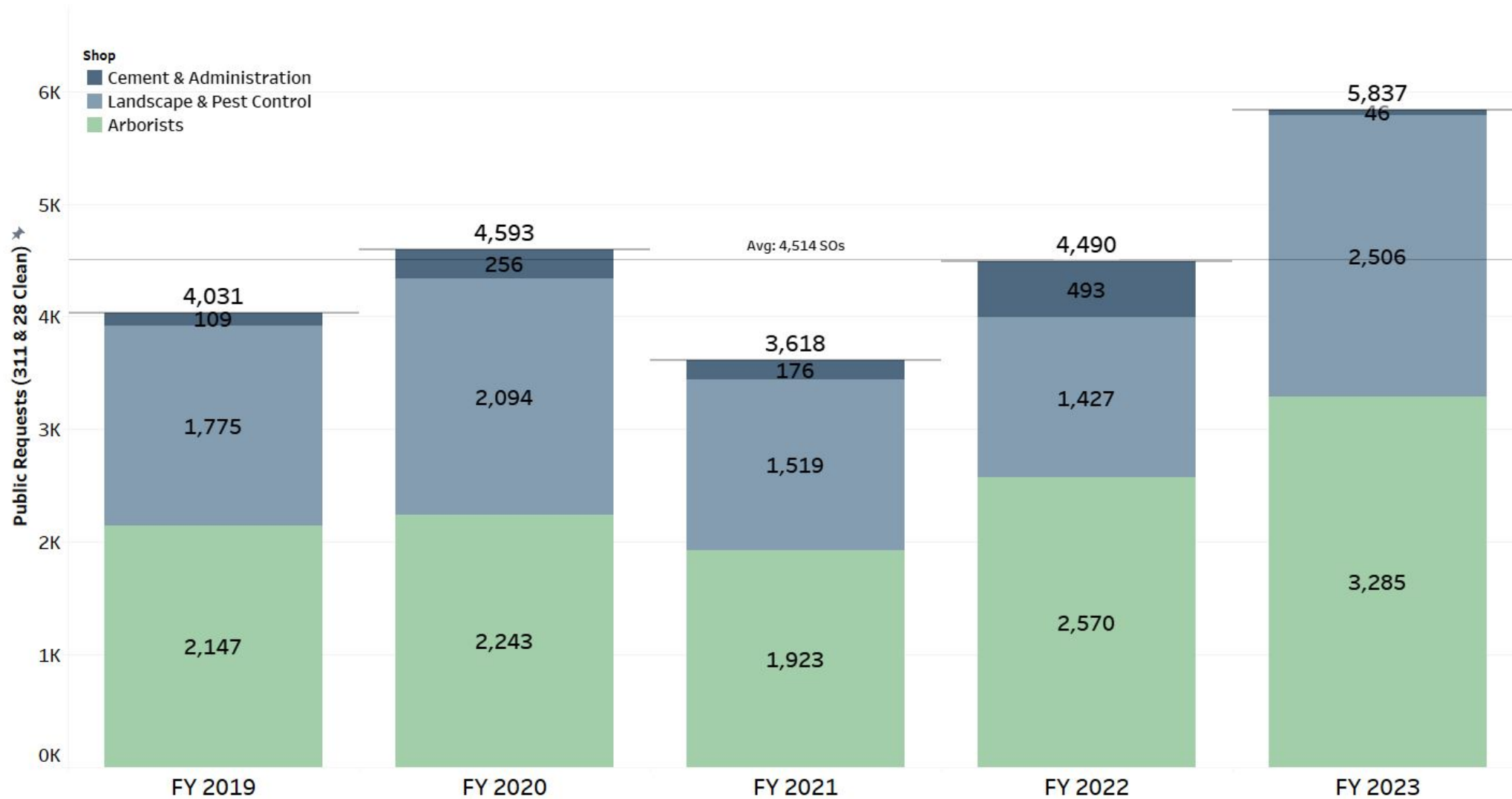


Source: Computerized Maintenance Management System (CMMS)



## Annual count of completed public requests by shop (via 311 or 28Clean)

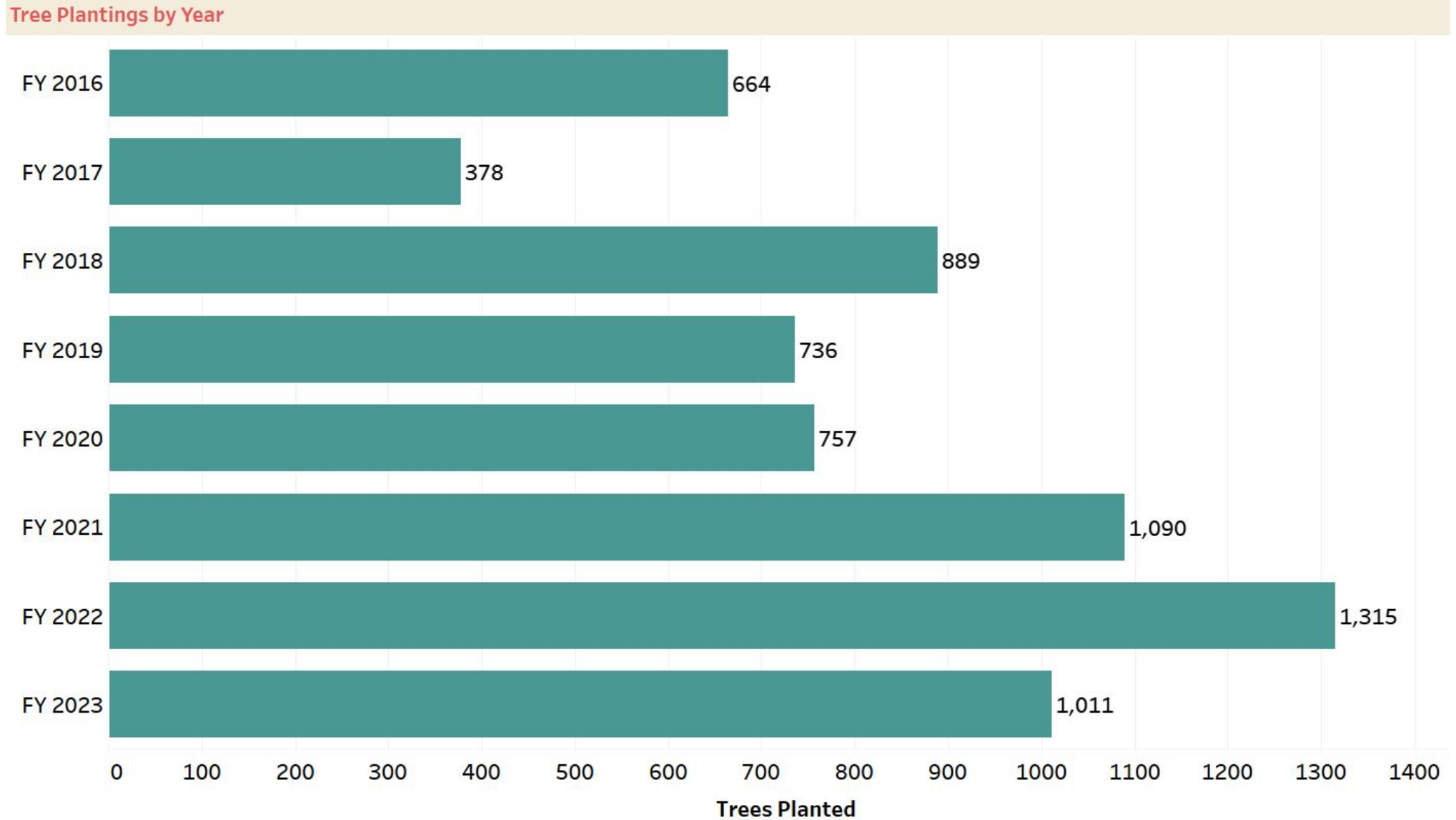
Public Requests Completed by Shop



Please note: Increasingly, the work that is performed by the cement shop is predominantly internally generated (e.g. x1104) and not from public requests.

Source: Computerized Maintenance Management System (CMMS)

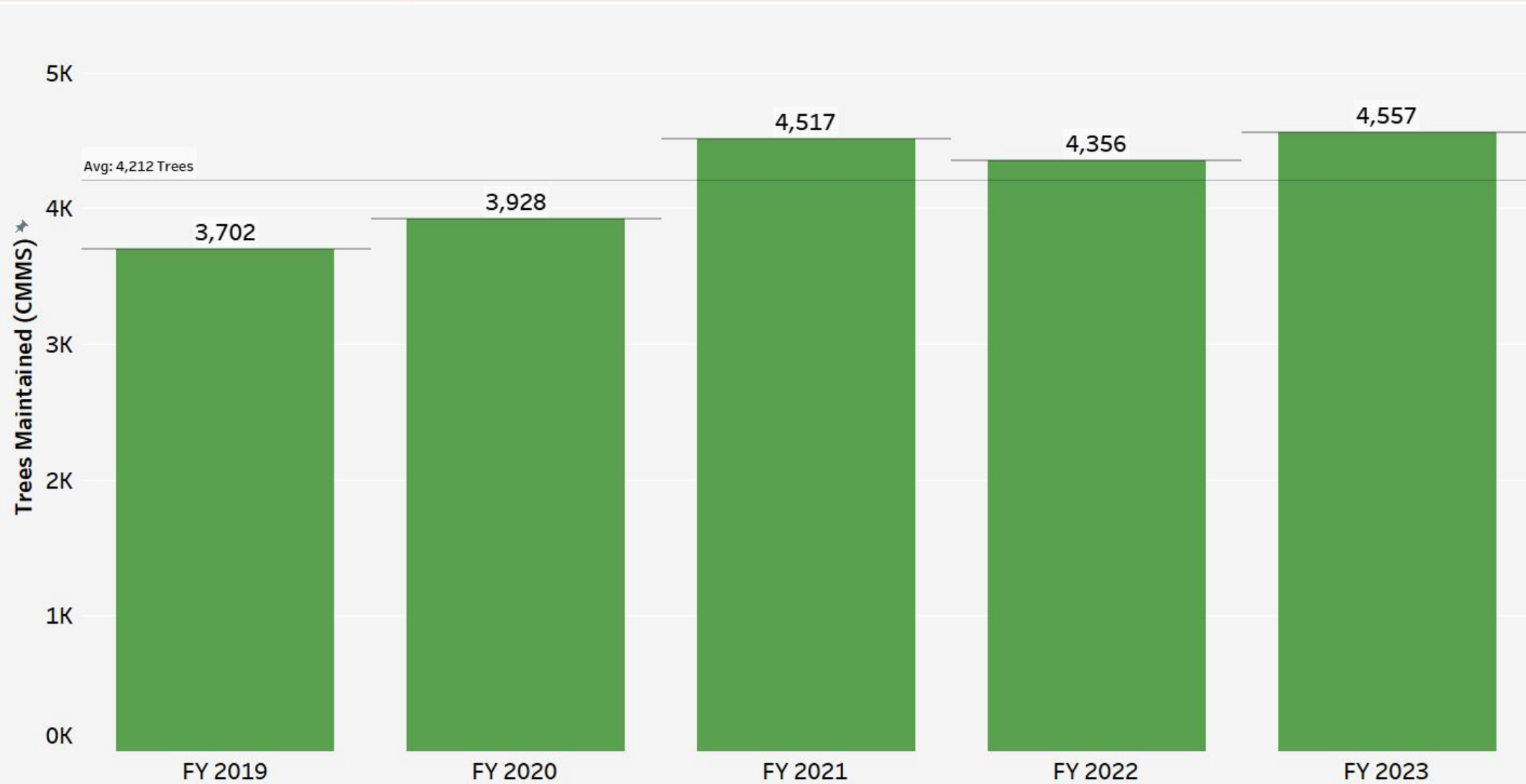
## Number of trees planted by fiscal year



Source: BUF Tree Database

## Count of trees maintained by year

Annual Number of Trees Maintained by Public Works Personnel



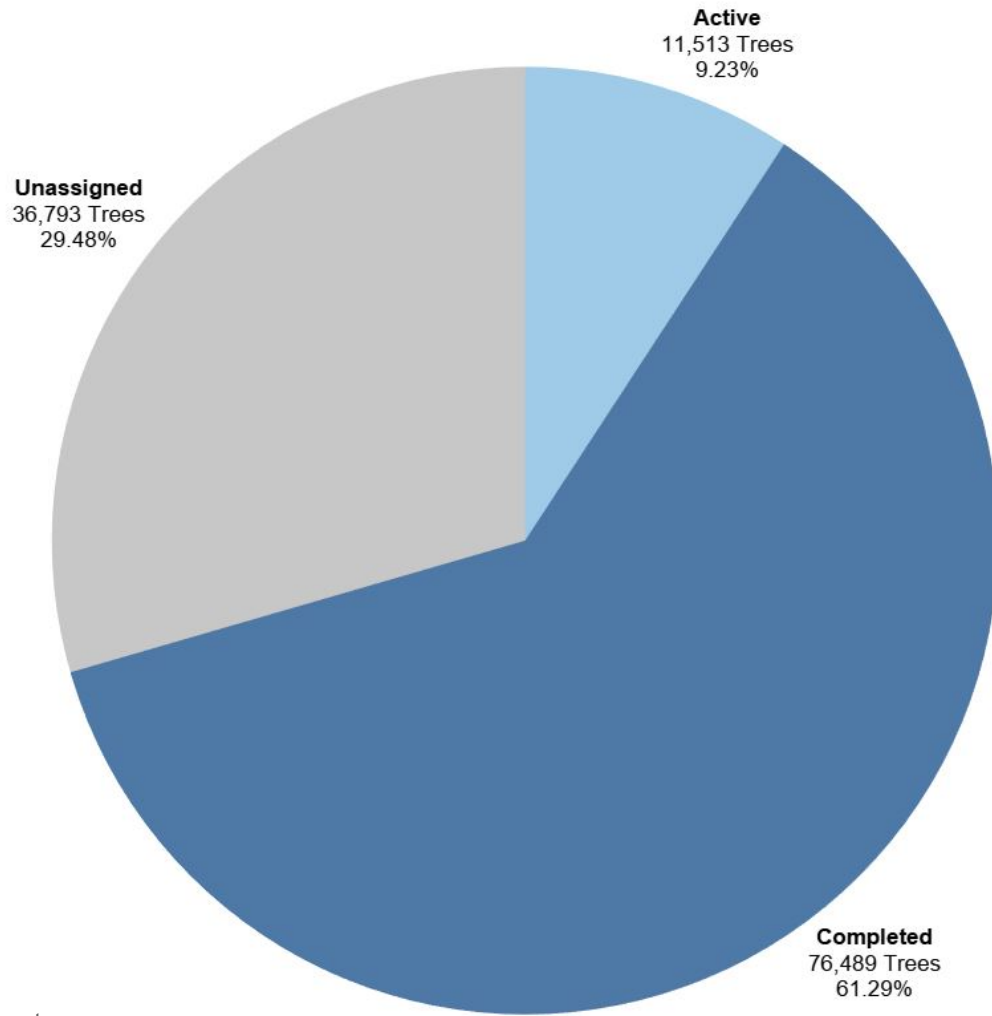
Source: Computerized Maintenance Management System (CMMS)

# Performance and Data Evaluation: **StreetTreeSF**

## **StreetTreeSF**: Progress Status

Totals as of 6/30/2023

Status  
Active  
Completed  
Unassigned



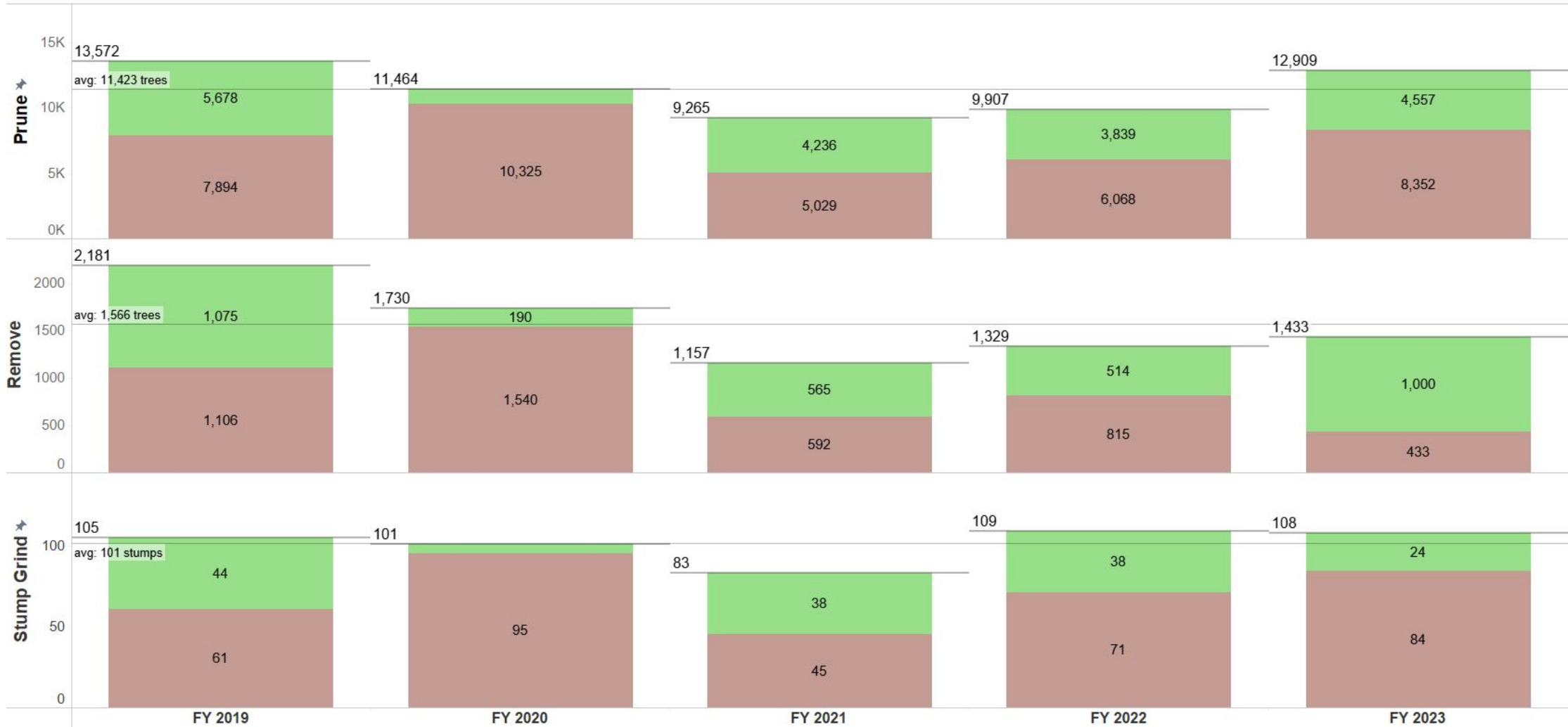
Count of Assets **124,795**

Sources: Progress or work internally tracked by Bureau of Urban Forestry.  
Tree census obtained by using ArborPro (2017)

# Performance and Data Evaluation: StreetTreeSF

StreetTreeSF: Assets addressed by activity and year

Public Works Crew  
Contractor



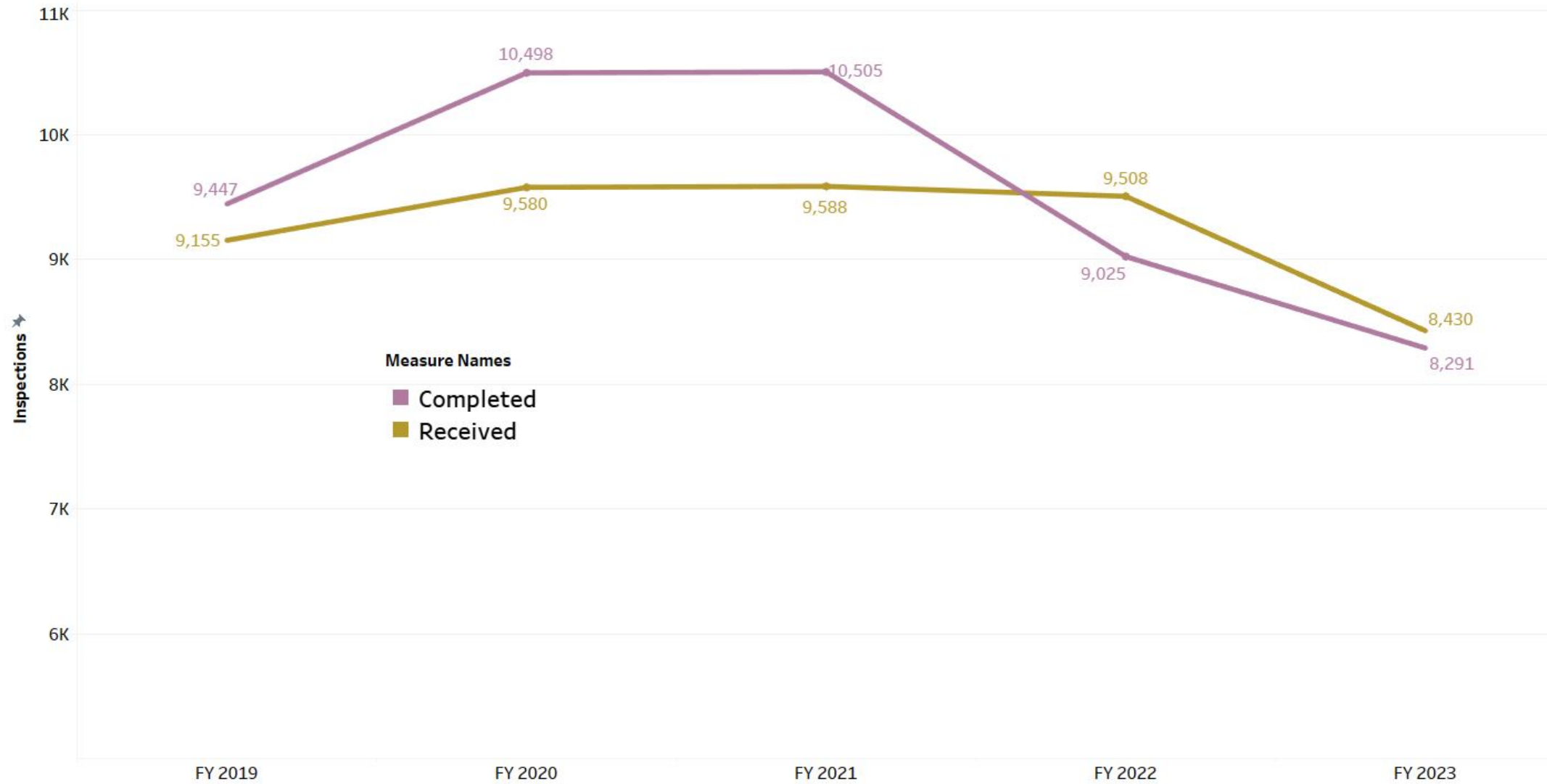
Please note: there is a difference in axis scale for each activity

Sources: Progress or work internally tracked by Bureau of Urban Forestry.  
Tree census obtained by using ArborPro (2017)

## Counts of inspections received and completed by fiscal year

Tree and Site Inspections: Volume Received & Completed by Year

(Database: 28Clean and Tree database; Public and Internal source)



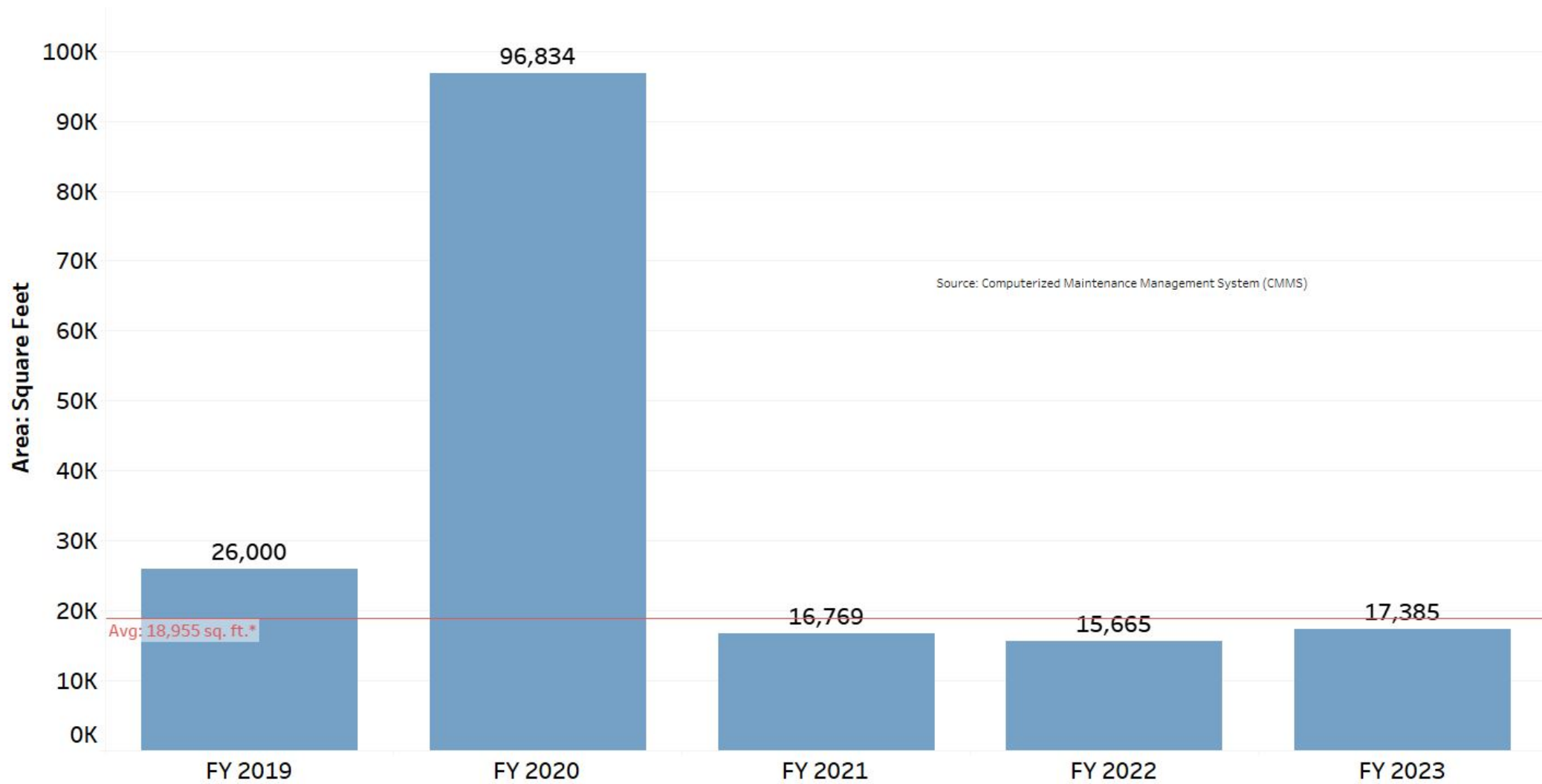
Please note: inspections axis begins at 5001

Source: BUF Tree Database



## Area of sidewalk repaired by fiscal year

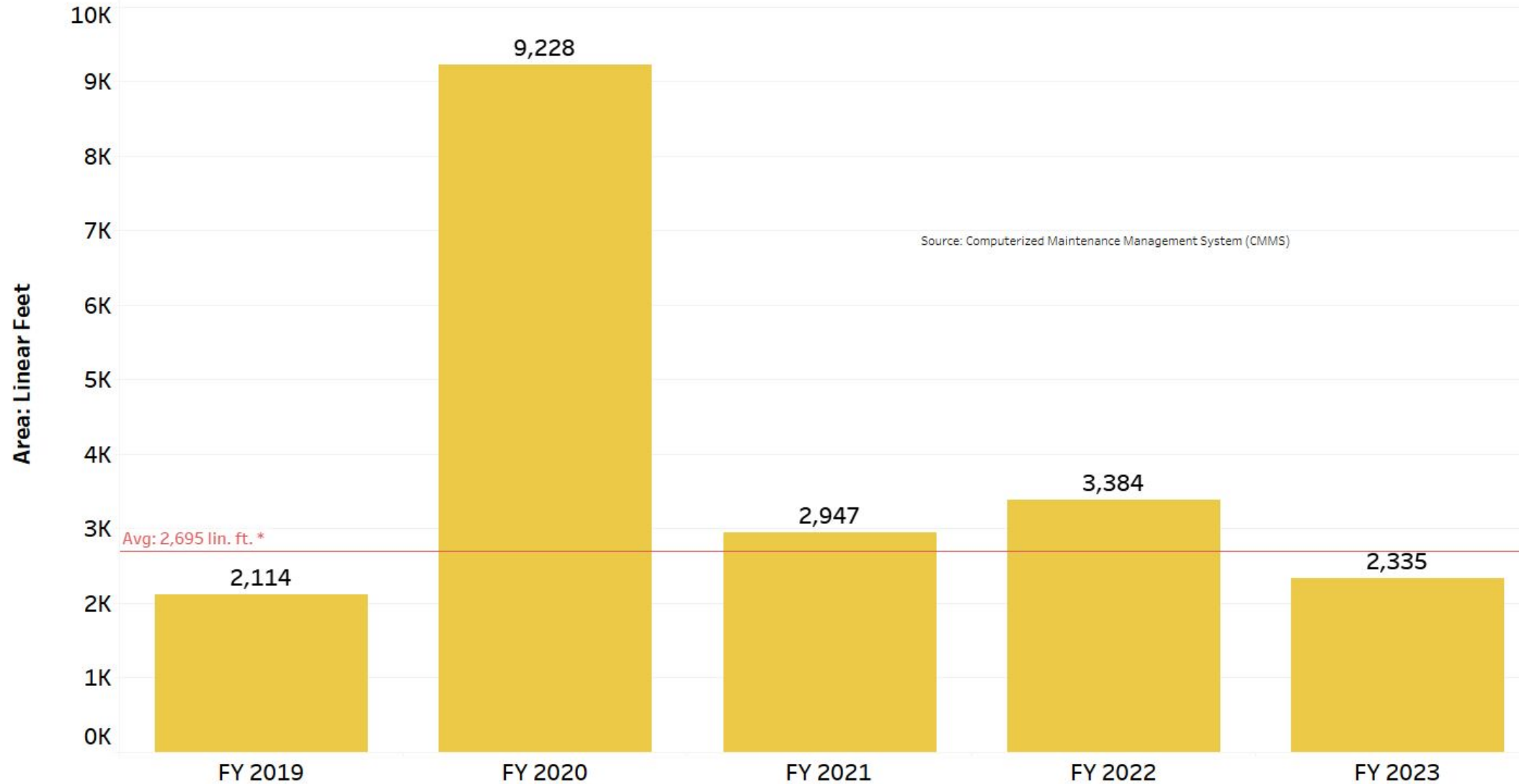
Sidewalk Fixed (sq. ft.)



\* Due to database entry errors during the pandemic, FY 2020 is omitted from the annual average from FY2019 to FY2023.

## Linear feet of curb repaired by fiscal year

Curb Fixed (linear feet)



\* Due to database entry errors during the pandemic, FY 2020 is omitted from the annual average from FY2019 to FY2023.



**QUESTIONS?**